

ASCET-DIFF V6.3
Installation Guide



Copyright

The data in this document may not be altered or amended without special notification from ETAS GmbH. ETAS GmbH undertakes no further obligation in relation to this document. The software described in it can only be used if the customer is in possession of a general license agreement or single license. Using and copying is only allowed in concurrence with the specifications stipulated in the contract.

Under no circumstances may any part of this document be copied, reproduced, transmitted, stored in a retrieval system or translated into another language without the express written permission of ETAS GmbH.

© **Copyright 2014** ETAS GmbH, Stuttgart

The names and designations used in this document are trademarks or brands belonging to the respective owners.

Document EC019906 V6.3 R01 EN - 11.2014

Contents

1	Introduction	5
1.1	Safety Advice	5
1.1.1	Correct Use	5
1.1.2	Labeling of Safety Instructions	5
1.1.3	Demands on the Technical State of the Product	6
1.2	User Profile	6
1.3	Structure of the Documentation	6
1.4	ASCET-DIFF Online Help – Quick Guide	7
1.5	Conventions	8
2	Installation	9
2.1	Preparations	9
2.1.1	Delivery Scope	9
2.1.2	ASCET-DIFF License	9
2.1.3	System Prerequisites	9
2.1.4	Required User Privileges for Installation and Operation	9
2.2	Installation	9
2.3	Command Line Installation / Uninstallation	17
2.4	Setting the Licensing Behavior	19
2.5	Uninstallation	21
3	Licensing the Software	23
3.1	ETAS License Models	23
3.2	How to get a License	24
3.2.1	What Information is Required?	24
3.2.2	License File	24
3.3	The License File	25
3.4	Grace Mode	27
3.5	The "Expiration Warning" Window	27

3.6	Borrowing a License	28
3.7	Customizing the Network Installation	30
4	Starting ASCET-DIFF	31
4.1	Starting the Standalone Variant	31
4.2	Starting the Add-On Variant	32
4.3	Starting ASCET-DIFF via the Command Line	34
5	Starting ASCET-DIFF Model Viewer	36
5.1	Starting the Command Prompt	36
5.2	Command Line arguments for invoking the Model Viewer	37
5.3	Starting ASCET-DIFF Model Viewer via context menu	39
6	ETAS Contact Addresses	40
	Index	41

1 Introduction

ASCET-DIFF is a program that compares two ASCET models. This allows you to compare, e.g., two development states, and produces clear results in a short time.

The comparison results are displayed in various tabs; different colors are used to distinguish between identical and changed elements, as well as elements occurring in only one component. Details are given in the ASCET-DIFF online help.

With ASCET-DIFF V6.3, the following types of ASCET components can be compared:

- block diagram classes/modules,
- AUTOSAR software components,
- AUTOSAR interfaces
- AUTOSAR mode groups
- state machines
- ESDL and C code components
- enumerations
- records
- containers
- projects

1.1 Safety Advice

Please adhere to the Product Liability Disclaimer (ETAS Safety Advice) and to the following safety instructions to avoid injury to yourself and others as well as damage to the device.

1.1.1 Correct Use

ETAS GmbH cannot be made liable for damage which is caused by incorrect use and not adhering to the safety instructions.

1.1.2 Labeling of Safety Instructions

The safety instructions contained in this manual are shown with the standard danger symbol shown below:



The following safety instructions are used. They provide extremely important information. Read this information carefully.



WARNING

Indicates a possible medium-risk danger which could lead to serious or even fatal injuries if not avoided.

**CAUTION**

Indicates a low-risk danger which could result in minor or less serious injury or damage if not avoided.

NOTICE

Indicates behavior which could result in damage to property.

1.1.3 Demands on the Technical State of the Product

The following special requirements are made to ensure safe operation:

- Take all information on environmental conditions into consideration before setup and operation (see the documentation of your computer, hardware, etc.).

Further safety advice is given in the ASCET V6.3 safety manual (*ASCET Safety Manual .pdf*) available at ETAS upon request.

1.2 User Profile

ASCET-DIFF users should be familiar with the operating system Microsoft Windows® Vista or Windows® 7. All users should be capable of executing menu functions, activating buttons etc. Users should also be acquainted with the Windows file storage system, particularly the relations between files and directories. The user must know about and have mastered the basic functions of the Windows File and Program Manager and Windows Explorer. The user should also be familiar with "Drag & Drop".

All users who are not familiar with the basic techniques of Microsoft Windows should familiarize themselves with them before using ASCET-DIFF. Details of working with Windows are contained in the relevant manuals by Microsoft Corporation.

Knowledge of ASCET is required.

1.3 Structure of the Documentation

The ASCET-DIFF documentation consists of the following parts:

- this installation guide
- an online help

The *ASCET-DIFF Installation Guide* consists of the following chapters:

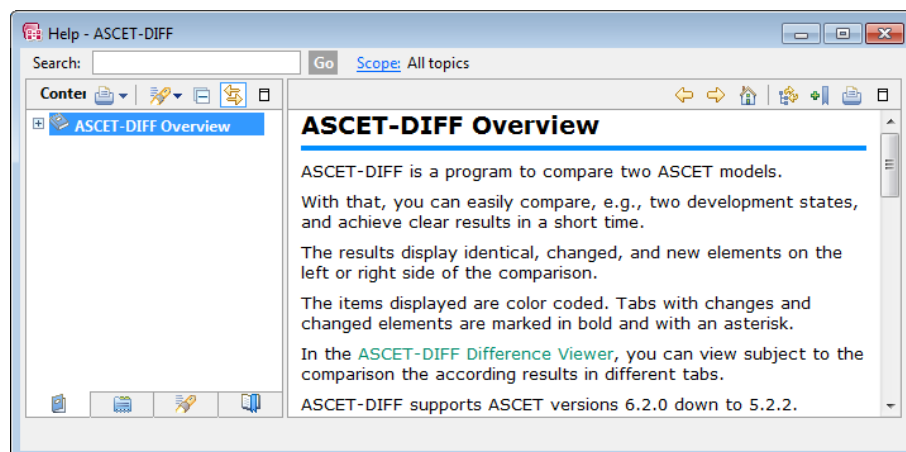
- **"Introduction" on page 5 (this chapter)**

This is where you are given an initial overview of the possible field of application of ASCET-DIFF. It also contains general information such as tips and system information.

- **"Installation" on page 9**
This chapter is intended for all users who install, maintain and uninstall ASCET-DIFF. It provides important information on the delivery scope, hardware and software requirements. The sequence of both the installation and uninstallation of ASCET-DIFF is also described.
- **"Licensing the Software" on page 23**
This chapter contains various licensing information.
- **"Starting ASCET-DIFF" on page 31**
This chapter explains how to start ASCET-DIFF both as standalone tool and as ASCET add-on.
- **"Starting ASCET-DIFF Model Viewer" on page 36**
This chapter explains how to start the ASCET-DIFF Model Viewer via the command line or the context menu in the windows file explorer.
- **"ETAS Contact Addresses" on page 40**
This chapter contains the contact addresses of the ETAS subsidiaries.

1.4 ASCET-DIFF Online Help – Quick Guide

Use the [Help](#) → [Help Contents](#) menu option to invoke the online help.



The panes of the help window provide you with the following information:

- The left pane shows the table of content, index, search results, links or bookmarks.
- The right pane contains the current help topic.
The first topic displayed here contains a short description of ASCET-DIFF. Click on the TOC entry in the left pane to open the more detailed ASCET-DIFF overview topic.

1.5 Conventions

Documentation Conventions

All activities executed by the user are displayed in a "use case" format, as shown by the following example. A task in this manual is a sequence of actions which have to be executed to attain a specific goal. The title of the task usually specifies the result of the actions, e.g. "To create a new component" or "To rename an element".

To attain a goal:

Any introductory information...

- Execute action 1.
- Explanations are listed under an action.
- Execute action 2.
Any explanation of step 2...
- Execute action 3.
Any explanation of step 3...

Any concluding remarks...

Typographic Conventions

The following typographic conventions are used:

Select File → Open .	Menu options are shown in boldface/blue.
Click OK .	Buttons are shown in boldface/blue.
Press <ENTER>.	Keyboard commands are shown in angled brackets, in block capitals.
The "Open File" dialog window opens.	Names of program windows, dialog windows, fields etc. are shown in quotation marks.
Select the file <code>setup.exe</code> .	Text in drop-down lists on the screen, program code, as well as path and file names are shown in the <code>Courier</code> font.
A <i>distribution</i> is a one-dimensional table of sample points.	Content markings and newly introduced terms are shown in <i>italics</i> .
The OSEK group (see http://www.osek-vdx.org/) has developed certain standards.	Links to internet documents are set in <u>blue</u> font.

Important notes for the user are shown as follows:

Tip

Important note for the user.

2 Installation

This chapter is intended for all users who install, maintain and uninstall ASCET-DIFF on a PC. It provides information on the delivery scope, hardware and software requirements as well as on how to prepare the installation (section 2.1). The sequence of both installation (section 2.2) and uninstallation (section 2.5) of ASCET-DIFF is described; command line installation/uninstallation (section 2.3) and setting the licensing behavior (section 2.4) are explained as well.

2.1 Preparations

Check the delivery package to make sure it is complete and make sure your system corresponds to the system requirements. Make sure that you have the necessary user privileges.

2.1.1 Delivery Scope

The delivery scope of ASCET-DIFF includes:

- ASCET-DIFF program files
- ASCET-DIFF Installation Guide in PDF format (Adobe Reader)

2.1.2 ASCET-DIFF License

You require a valid license for ASCET-DIFF if you want to use the tool. You obtain the license file required for licensing either from your tool coordinator or through a self-service portal on the ETAS internet site at <http://www.etas.com/support/licensing>. To request the license file you have to enter the activation number which you received from ETAS during the ordering process.

For further information on licensing, see "Licensing the Software" on page 23.

2.1.3 System Prerequisites

ASCET-DIFF requires the same system prerequisites as ASCET.

2.1.4 Required User Privileges for Installation and Operation

User Privileges Required for Installation::

In order to install ASCET-DIFF on a PC, you need the user privileges of an administrator.

If the user name under which you have registered in Windows does not have administrator privileges, a warning message is displayed and the ASCET-DIFF installation is canceled. In that case, please contact your system administrator.

User Privileges Required for operation:

The operation of ASCET-DIFF requires the same user privileges as ASCET.

2.2 Installation

You can install ASCET-DIFF as standalone tool, as add-on to ASCET, or both. You can, however, only install the add-on variant of ASCET-DIFF if ASCET has already been installed on your computer.

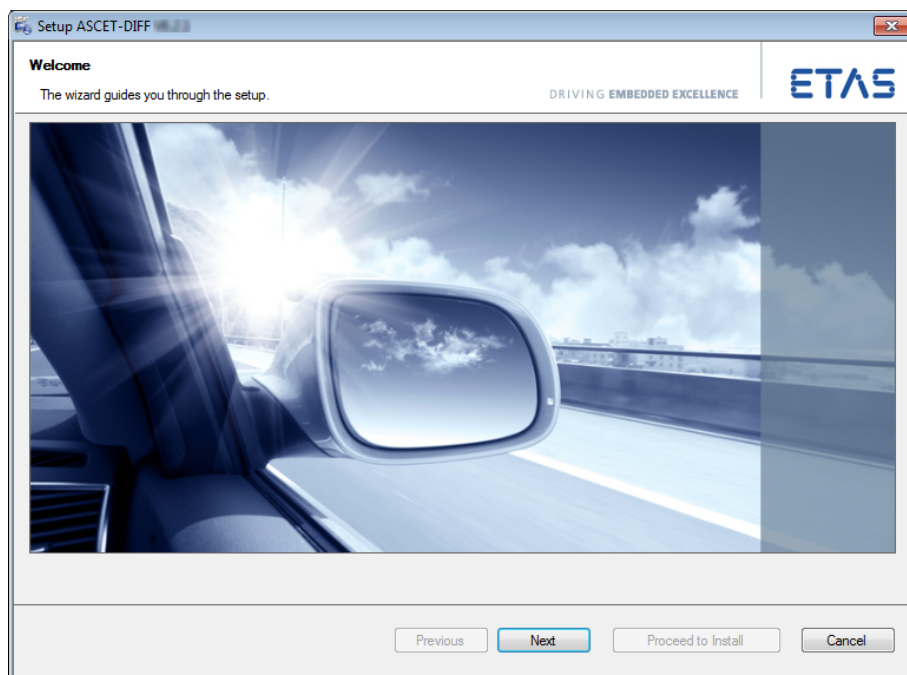
The installation is independent of whether you install ASCET-DIFF from installation disk or a network drive.

Windows® Vista + SP1 (32 bit) or Windows® 7 (32 bit or 64 bit) or Windows® 8 (64 bit in 32 bit compatibility mode) is required to install ASCET-DIFF.

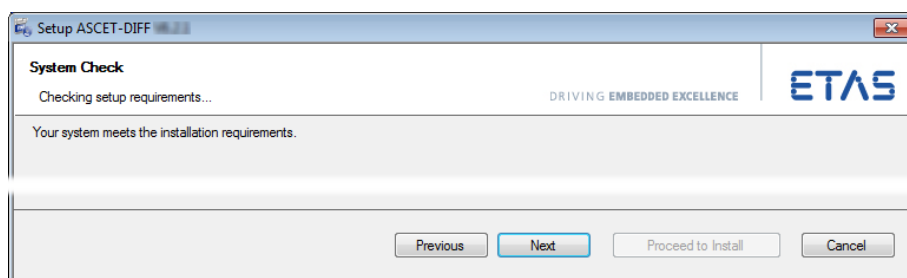
To start the ASCET-DIFF installation:

- Insert the installation disk in the respective drive on your PC.
- Select the drive in the Windows Explorer and run the `Setup.exe` file.

The ETAS Installer is launched.



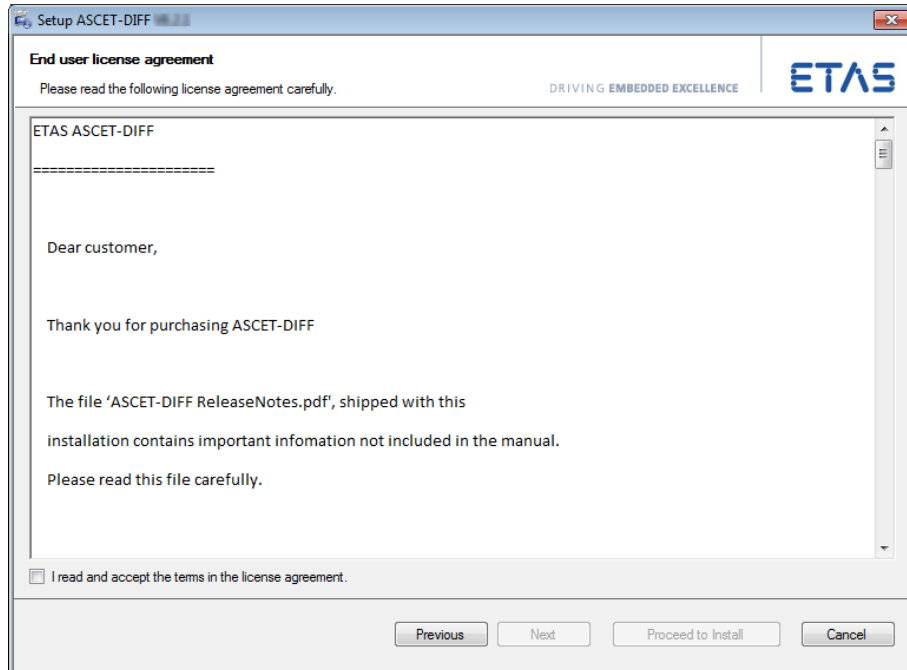
- Click **Next** to continue.
The installer checks if your computer meets the system requirements for ASCET-DIFF installation. The result is displayed in the "System Check" window.



- If your system meets the system requirements, click **Next** to continue.
- If your system does not meet the system requirements, follow the instructions in the "System Check" window and re-start the installation.

To accept the license agreement:

The following window shows the license agreement.



- Read the license agreement, then activate the **I read and accept the license agreement** option. If you do not accept the license agreement, you cannot continue the installation.

- Click **Next** to continue.

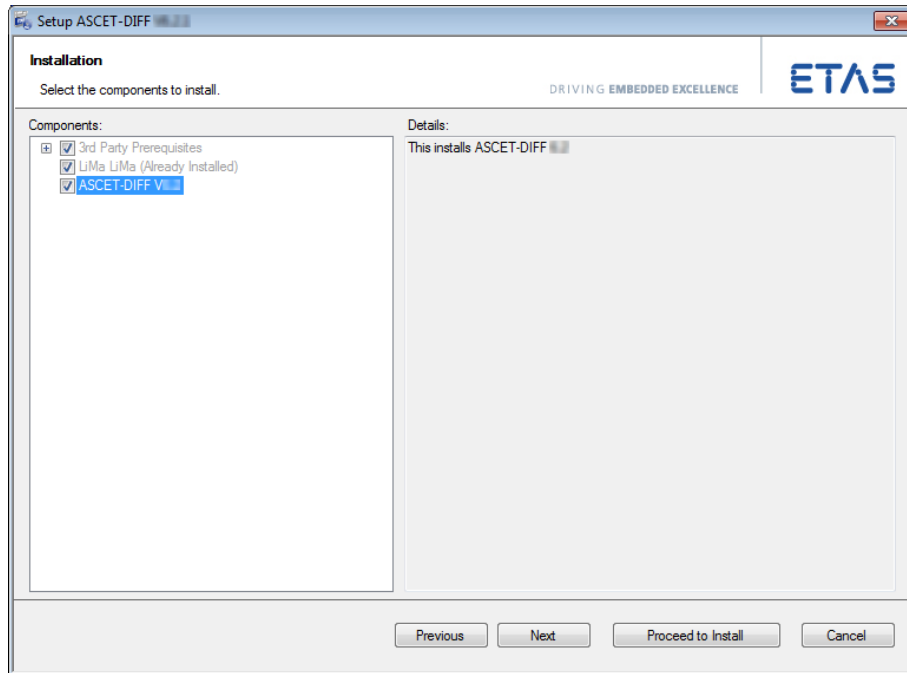
Or

- Click **Proceed to Install** to go to the "Ready to install" window immediately, with default settings for components to be installed, installation and workspace paths, etc.

Continue reading in section "To install ASCET-DIFF:" on page 16.

To select components:

The "Installation" window lists the necessary prerequisites and the components of ASCET-DIFF. Prerequisites and components already present on your PC are marked accordingly.



The text field on the right displays information on the highlighted component. For ASCET-DIFF, all components are mandatory, you cannot select them.

- Click **Next** to continue.

Or

- Click **Proceed to Install** to go to the "Ready to install" window immediately, with default settings for installation type, installation and workspace paths, etc.

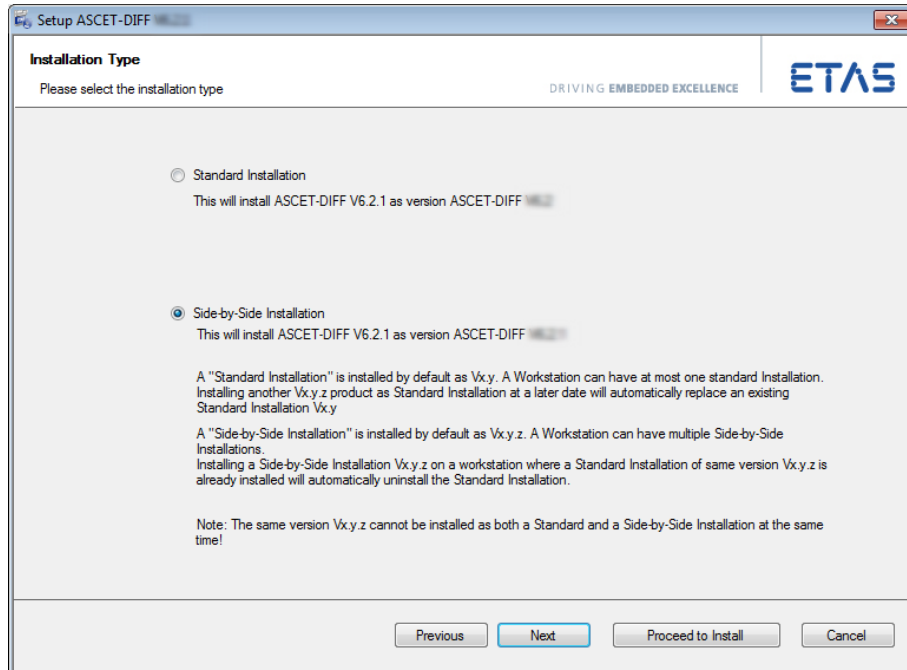
Continue reading in section "To install ASCET-DIFF:" on page 16.

To select the installation type:

The "Installation Type" window allows you to select either a standard installation or a side-by-side installation. The following installation type options are available:

- **Standard Installation:** ASCET-DIFF V6.3.x is installed as ASCET-DIFF V6.3. Previous installations of ASCET-DIFF V6.3.* are uninstalled automatically.

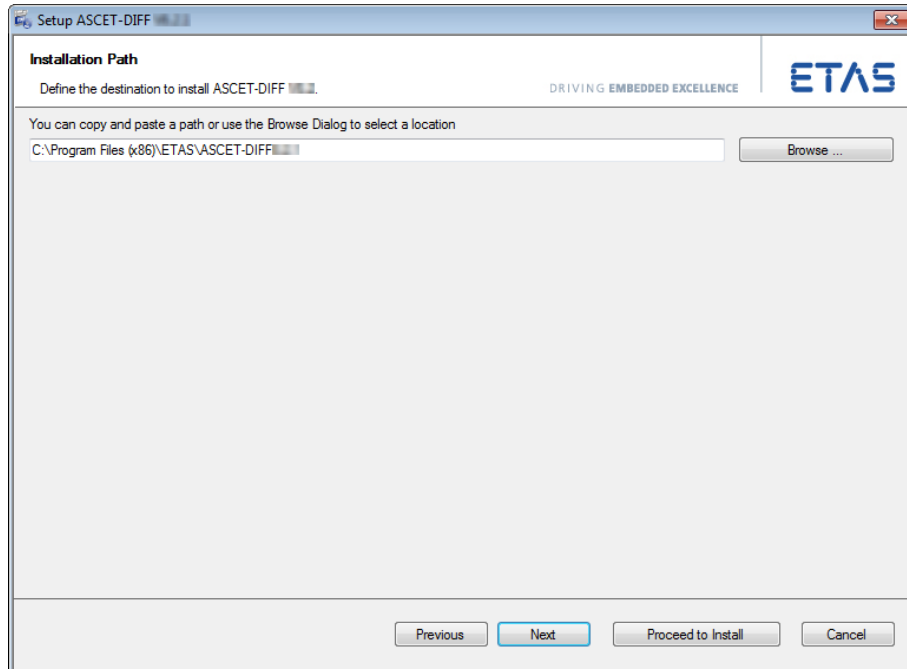
- **Side-by-Side Installation:** ASCET-DIFF V6.3.x is installed as ASCET-DIFF V6.3.x. Previous installations of ASCET-DIFF V6.3.y are kept, except for $y = x$.



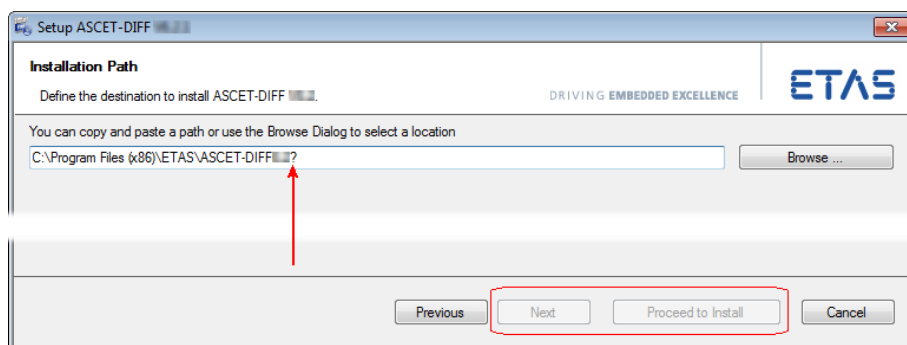
- Read the explanations in the "Installation Type" window.
 - Activate the option for the installation type you want to use.
 - Click **Next** to continue.
- Or*
- Click **Proceed to Install** to go to the "Ready to install" window immediately, with default settings for installation and workspace paths, etc.
- Continue reading in section "To install ASCET-DIFF:" on page 16.

To define path settings:

In the "Installation directory" window, you are prompted to enter a destination directory for the installation (referred to as <installation>).



- To change a preset directory, enter or select (via the **Browse** button) the new path.
If you entered an invalid path, the **Next** and **Proceed to Install** buttons are disabled.



- If you used the **Browse** button, proceed as follows.
 - In the "Browse For Folder" window, select an existing directory.

Or

- Use the tree structure and the **Make New Folder** button to create a new folder.
- Click **OK** to close the "Browse for Folder" window and accept your selection.

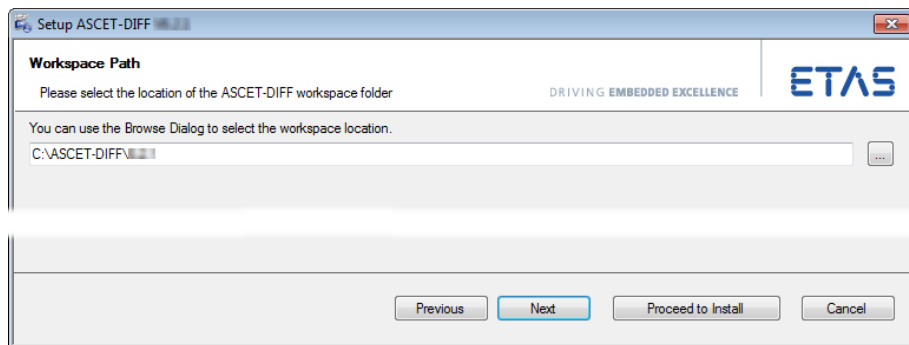
- Click **Next** to continue.

Or

- Click **Proceed to Install** to go to the "Ready to install" window immediately, with default settings for workspace path, etc.

Continue reading in section "To install ASCET-DIFF:" on page 16.

- In the "Workspace Path" window, enter or select a path for the ASCET-DIFF workspace.



- Click **Next** to continue.

Or

- Click **Proceed to Install** to go to the "Ready to install" window immediately, with default settings.

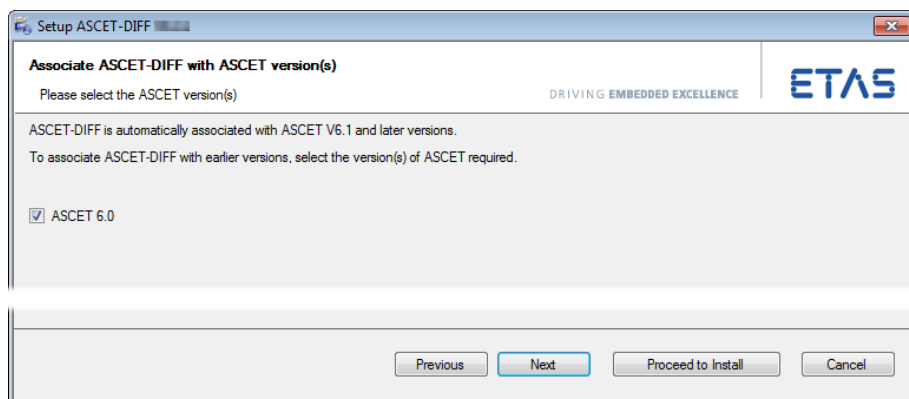
Continue reading in section "To install ASCET-DIFF:" on page 16.

To associate with ASCET:

Tip

This instruction is only relevant if one or more ASCET versions lower than V6.1.0 are installed on your PC.

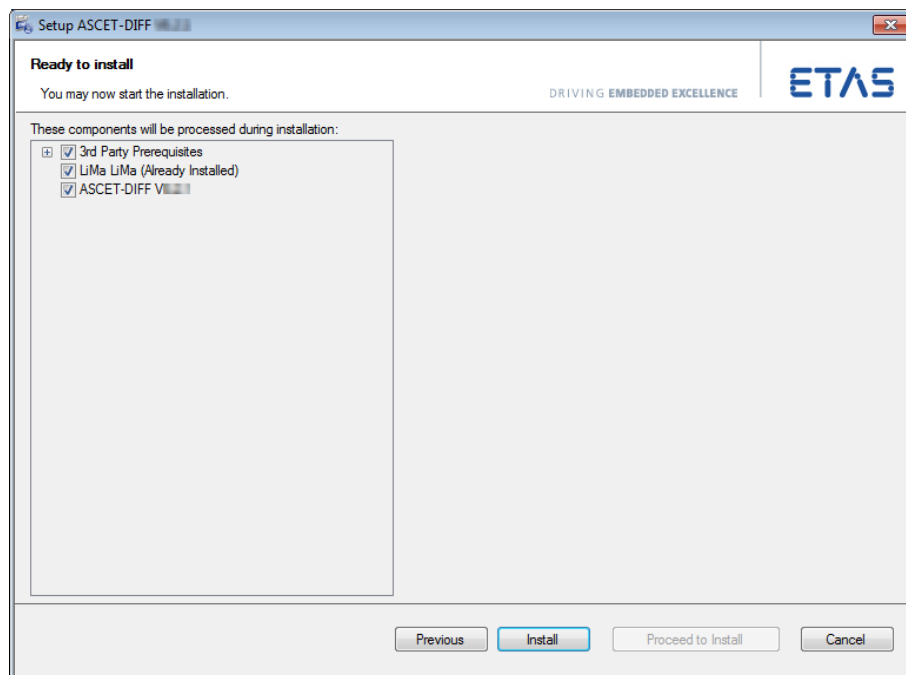
The "Associate ASCET-DIFF with ASCET version(s)" window lists all installations lower than ASCET V6.1.0 on your PC.



- Select the ASCET installation(s) you want to use with ASCET-DIFF.
ASCET-DIFF cannot be started from within ASCET installations not selected.
- Click **Next** or **Proceed to Install** to continue.

To install ASCET-DIFF:

The "Ready to install" window lists the components selected for installation. You cannot change the selection here; to do so, you must go back to the "Installation" window (cf. page 12).



Tip

*The next step will start the installation. You **cannot** cancel the installation once it is running; the **Cancel** button is deactivated.*

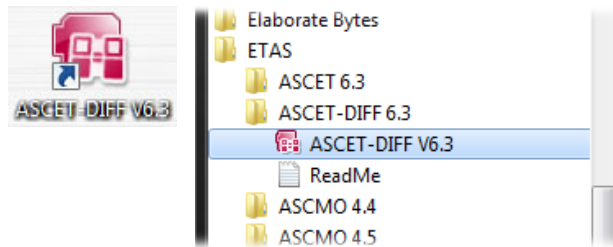
- In the "Ready to install" window, click **Install**.
The selected components (cf. page 12) are installed. Components already present on your PC are skipped. A progress indicator shows how the installation is progressing.

To complete the installation:

Once all components have been installed successfully, you are prompted to end the installation.

- Click on **Finish** to end the installation.

An icon is placed on the desktop of your PC, and the ASCET-DIFF folder with the following entries is created in the Windows Start menu:



The version number shown in desktop icon and start menu entries depends on the installation type (standard: $Vx.y$ or side-by-side: $Vx.y.z$) you selected (see page 12).

- **ASCET-DIFF $Vx.y[.z]$**
The ASCET-DIFF program is started.
- **ReadMe**
Opens the Readme file.

The ETAS License Manager has its own folder, **License Management**, in the ETAS program group of the Windows Start menu. This folder contains a single entry, **ETAS License Manager**.

2.3 Command Line Installation / Uninstallation

When you start the ASCET-DIFF installation from a command line, you can use several command-line parameters to customize the installation.

Each execution of `Setup.exe` writes a log file `%appdata%\ETAS\SETUP\
<date_time> Setup.log`.

/silent

Silent installation mode. With this installation mode, no dialog windows requiring user information open.

Tip

*To accept EULA (cf. page 11) during silent installation, you must use the command-line parameter **/EULAAccepted**.*

*To deal with a possible request for a computer restart, you must use either the **/NoRestart** or the **/AllowRestart** command line parameter.*

Default values are used for all information normally requested in installation windows. Error messages are hidden, too.

/EULAAccepted

Accepts the license agreement.

The text of the license agreement is provided on the installation disk, in the `EULA` subfolders.

¹. `%appdata%` =
`C:\Users\<username>\AppData\Roaming` (Windows 7)

/NoRestart

Suppresses a computer restart that may be required at the end of the installation. If a reboot is suppressed, a log message is issued.

/AllowRestart

Allows a computer reboot restart that may be required at the end of the installation. A restart is performed without further notice.

/Debug

Writes additional log files for *.msi packages.

These files are stored in the %appdata%¹\ETAS\SETUP folder.

/DefaultSettings

Allows to specify an own XML file with default settings (instead of using InstallationDefaultSettings.xml).

You can specify a relative path if the file is relative to Setup.exe, otherwise you have to specify a absolute path.

Syntax: /DefaultSettings:"<path>\<filename>.xml"

/uninstall**Tip**

For command-line uninstallation, you must run setup.exe from the following location:

*ETAS\GENERICSetup\ASCET_DIFF ASCET-DIFF\<a>..<c>.<d>
in your program directory*

Uninstalls ASCET-DIFF. Can be combined with /silent for uninstallation without user interaction.

Examples:

```
Setup.exe /silent /EULAAccepted
```

Triggers a silent installation.

```
Setup.exe /uninstall /Debug
```

Triggers an uninstallation and writes additional logs.

```
Setup.exe /DefaultSettings:"D:\myOwnSettings.xml"
```

Triggers a non-silent installation that uses your own default settings for the installation.

By default, silent installation uses the standard installation type (see page 12). To select side-by-side installation, proceed as follows:

To select Side-by-Side for command-line installation:

- Copy the InstallationDefaultSettings.xml file to a location where you can edit it.
- Open InstallationDefaultSettings.xml in a suitable editor.

¹. %appdata% =
C:\Users\<username>\AppData\Roaming (Windows 7)

- In the editor, go to the package with ID="ASCET_DIFF ASCET-DIFFInstallPack_<a>..<c>.<d>".
- In that package, edit the variable PRODUCT_FOLDER_VERSION as follows:

```
<Variable
  name="PRODUCT_FOLDER_VERSION"
  defaultValue="[packagevar:xyzversion]"
  validation="none" />
```

packagevar:xyzversion is required for side-by-side installation.

packagevar:xyversion is required for standard installation.

- Save the XML file.
- Use /DefaultSettings (cf. page 18) to pass the changed InstallationDefaultSettings.xml file to the command-line installation.

2.4 Setting the Licensing Behavior

The ASCET-DIFF installation includes an installation of the ETAS license manager. You can define the way in which ASCET-DIFF (and other ETAS software programs) access the required licenses in the [Licensing] section of an *.ini file.

Such an *.ini file is available on your installation disk, in the ... \Packages\ASCET-DIFF LicensingASCET-DIFFInstallPack_6.3.<x>.<y> folder. You can copy this file to a local directory and adapt it according to your needs.

To define the access to the required licenses:

- Open the *.ini file with a text editor.
- Modify the settings in the [Licensing] section as desired.
The parameters and their settings are described below.
- Save your changes.

The following parameters may be used:

- **LicenseFileName**
Defines the absolute path to the location of the license file which is to be added.
- **LicensesToBorrow**
You can use this setting if licenses can be borrowed from a license server. To enable the borrow mechanism, you must enter the name of the product or features license (e.g. ASCET-DIFF). If you enter more than one license, the license names must be separated by blanks.

- **BorrowExpiryMode**

Defines the way in which the expiration of the borrow status is given. Possible values are:

 - **Date**

If the `BorrowExpiryMode` is set to `Date`, the borrow period will expire at a certain date which is specified under `BorrowExpiryDate`.
 - **Interval**

If the `BorrowExpiryMode` is set to `Interval`, the borrow period will expire after a certain number of days which is specified under `BorrowExpiryInterval`.
- **BorrowExpiryDate**

If the `BorrowExpiryMode` is set to `Date`, this parameter specifies the date when the borrow period expires. The format is `yyyy-mm-dd`.
- **BorrowExpiryInterval**

If the `BorrowExpiryMode` is set to `Interval`, this parameter specifies the length of the borrow period in days.
- **ExecuteBorrowAutomaticExtensionInterval**

Defines at what point of time the borrow period will be automatically extended. This parameter specifies the number of days before the expiration of the current borrow period. When this time is reached, the borrow period is automatically extended to the interval specified under `BorrowAutomaticExtensionInterval`.
- **BorrowAutomaticExtensionInterval**

This parameter specifies the borrow interval in days that is applied when an automatic extension of the borrow period is executed (as defined under `ExecuteBorrowAutomaticExtensionInterval`).
- **ImmediateBorrow**

You can define that a license is automatically borrowed. Possible values are:

 - **True**

The license is borrowed automatically at installation time.

Tip

`ImmediateBorrow='True'` works **only** for the user who performs the installation. Other users who work on the same computer do not own the borrowed license.
 - **False**

The license will be borrowed at the first time when the program connects to the license server.

- CustomLicenseFolder

Due to the fact that the default location for added license files (e.g., C:\ProgramData\ETAS\FlexNet for Windows 7) is only writeable for users with admin rights, a different path for the license file folder may be specified with this parameter.

The following example defines that borrowing is enabled for ASCET-DIFF. The license will be borrowed when ASCET-DIFF is started for the first time; by default the license expires after 100 days.

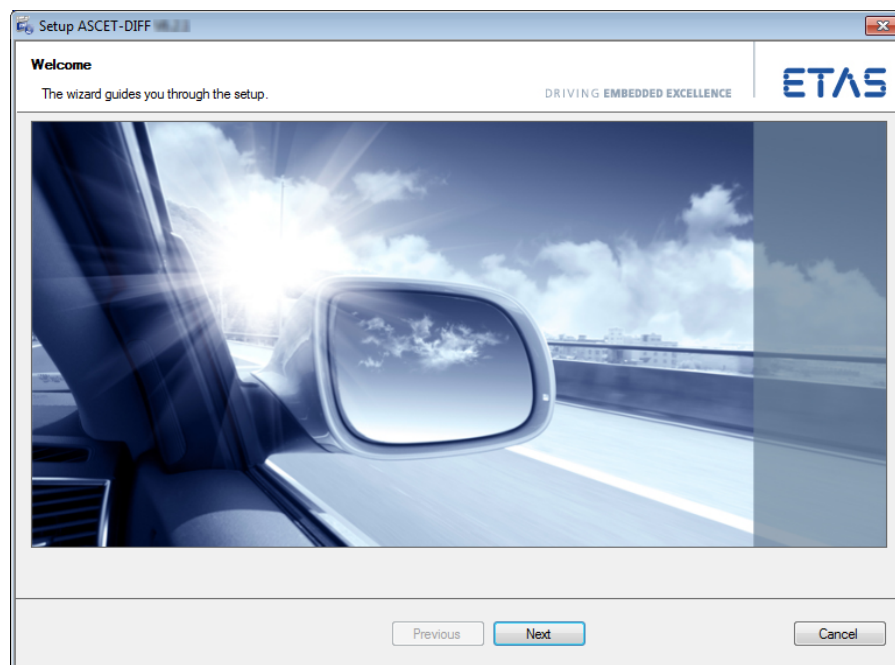
```
[Licensing]
LicenseFileName = 'd:\licenses\MyLicense.lic'
LicensesToBorrow = 'ASCET-DIFF'
BorrowExpiryMode = 'Interval'
BorrowExpiryInterval = '100'
ImmediateBorrow = 'false'
```

2.5 Uninstallation

If you uninstall ASCET-DIFF, *all* installed variants are uninstalled automatically.

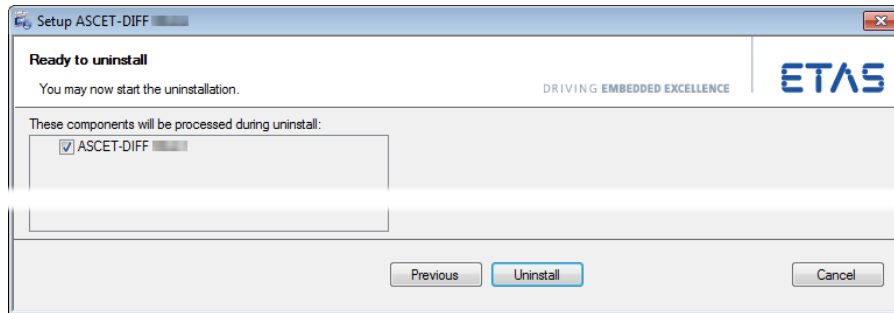
To uninstall ASCET-DIFF:

- Start the uninstall procedure via the **Programs and Features** icon in the Windows Control Panel.
The ETAS installer is launched.



You can use the **Next** button to get to the next uninstallation window; **Back** to get to the previous window, and **Cancel** to cancel uninstallation.

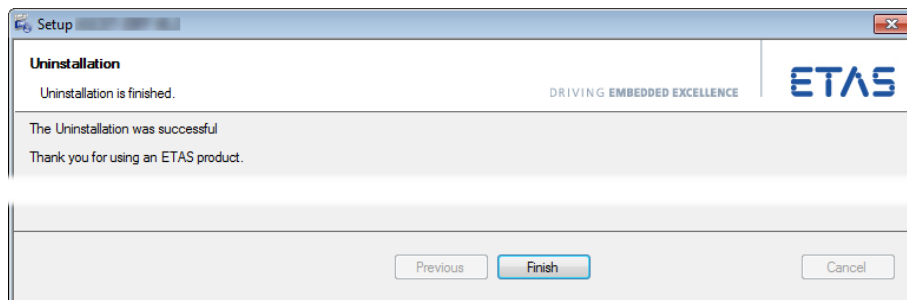
- Click **Next** to check if your computer meets the system requirements for ASCET-DIFF uninstallation. The result is shown in the "System Check" window.
- Click **Next** to continue. The "Ready to uninstall" window opens. It lists the components that will be uninstalled. You cannot change the selection.



Tip

The next step will start the uninstallation. You **cannot** cancel uninstallation once it is running; the **Cancel** button is deactivated.

- Click **Uninstall** to actually uninstall ASCET-DIFF. A progress indicator shows how the uninstallation is progressing. Once all components have been uninstalled, a success window opens.



- Click **Finish** to end the uninstallation.

3 Licensing the Software

To be able to work with an ETAS software product, you require a license. This section contains basic details on this subject.

- "ETAS License Models" on page 23
- "How to get a License" on page 24
- "The License File" on page 25
- "Grace Mode" on page 27
- "The "Expiration Warning" Window" on page 27
- "Borrowing a License" on page 28

Details concerning the scope of the licenses and other legal aspects can be found in "Terms and Conditions".

3.1 ETAS License Models

There are three different license models available for licensing your ETAS software:

Machine-Named License, Local

- A license of this type is managed by the user him/herself.
- As it is linked to a particular PC (better: to the MAC address of the Ethernet adapter), it is valid wherever the PC is used.
- When you change your PC, you require a new license.

User-Named License, Server-Based

- The licenses (of a department or company) are managed centrally on a server by a designated person.
- The license is linked to the user name with which the user is registered in the network and is available on every PC in the network.
- If the relevant PC is disconnected from the network, the license can be "borrowed."

Concurrent (or Floating) License, Server-Based

Most of what is true of the user-named license applies to this type of license. The difference is that here several users share a limited number of licenses.

3.2 How to get a License

If your company has a tool coordinator and server-based license management for ETAS software, contact this person. Otherwise (in the case of a machine-named license) you obtain your license from the ETAS license portal (the URL is shown on your Entitlement Certificate).

There are three ways of logging in on the welcome page:

- **Activation ID**

Once you have logged in, a specific activation¹ is visible and can be managed – the activation ID is shown on your Entitlement Certificate.

- **Entitlement ID**

All activations of the entitlement² are visible and can be managed (e.g. for a company with just one entitlement).

- **E-mail and password**

All activations of the entitlements assigned to the user account are visible and can be managed (e.g. for a tool coordinator responsible for several entitlements).

If you need help in the portal, click the [Help](#) link.

3.2.1 What Information is Required?

Information on the hosts must be entered to activate licenses:

- Machine-named license

The MAC address of the Ethernet adapter to which the license is to be bound is required here

- User-named license

Here, you need a server host or a server triad as well as a user name

- Concurrent (floating) license

Here, you need a server host or a server triad.

Tip

If this data changes (e.g. due to changes in the hardware or a change of user), the license must be given a "rehost". This procedure is also described in the portal help file.

3.2.2 License File

The result of your activities is the provision of a file `<name>.lic` with which you can license your software in the ETAS License Manager.

¹ The activations refer to a specific product, its license conditions, the available number of licenses and other details required for generating a license. Activations are identified uniquely with activation IDs.

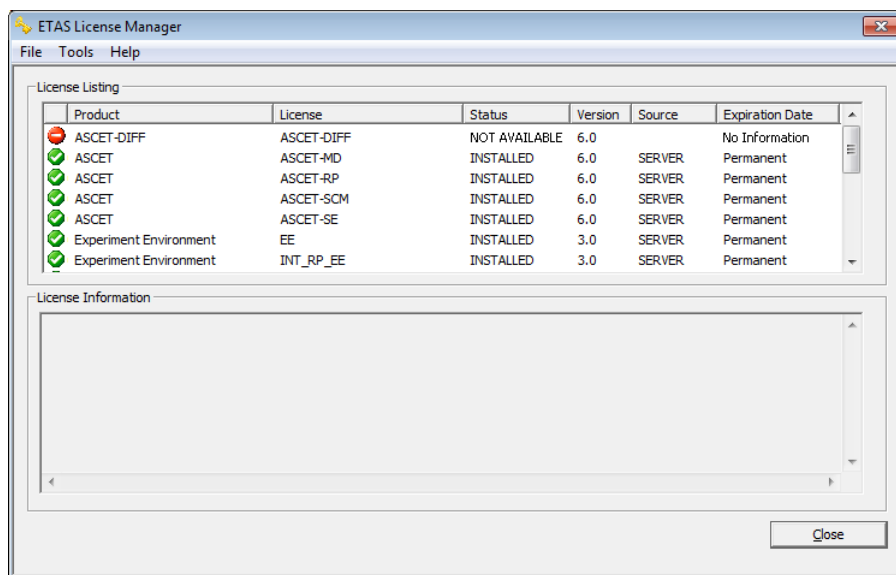
² An entitlement shows the authorizations you have as a user; it stands for the right to own one or more licenses for a product. It is a kind of account of rights of use for software from which you can take licenses as you need to.

3.3 The License File

To check to license status

- In the Windows Start menu, select **Programs** → **ETAS** → **License Management** → **ETAS License Manager**.

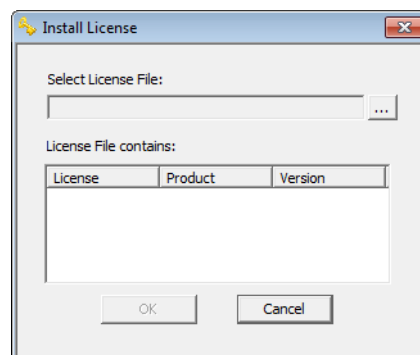
The ETAS License Manager opens. It contains one entry for each installed product. The symbol at the beginning of the entry and the "Status" column entry indicate whether a valid license has already been obtained or not.



To add a license file:

- Open the ETAS License Manager (cf. page 25) and select **File** → **Add Licensing File**.

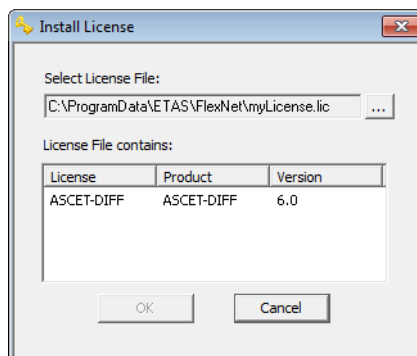
The "Install License" dialog window opens.



- Next to the "Select License File" field click the ... button.

- In the file selection window, select the license file and click **Open**.

The "Install License" dialog window shows information on the selected license.

**Tip**

The "Version" column shows the version number of the license, not the version number of the software.

- Confirm with **OK**.
The license just added is now listed in the ETAS License Manager. A green symbol before the entry shows that the license is valid.

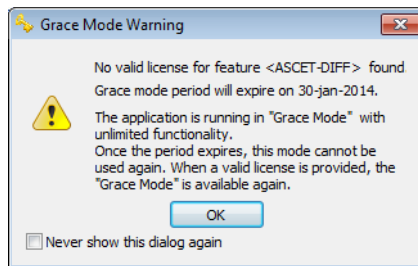
Tip

If the green symbol is not displayed, there might be a problem with the license file or the license relates to another product. Additional information on the ETAS License Manager can be found in the online help of the ETAS License Manager.

- Close the ETAS License Manager.

3.4 Grace Mode

If you have not yet installed a license, you can still operate the software for a limited amount of time – it then runs in what is referred to as *grace mode*. The window shows you how long you can continue to operate the software in this mode.



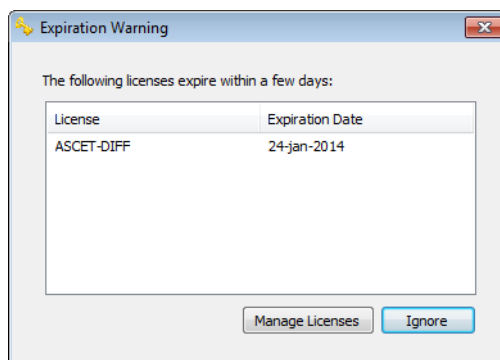
Tip

Note that no Grace Mode is available for the ASCET-DIFF Model Viewer. You can only start the ASCET-DIFF Model Viewer if you have the required "ASCET-VIEW" license. For more information on existing licenses, see chapter "Licensing the Software" on page 23 or contact your system administrator.

3.5 The "Expiration Warning" Window

If your installed license runs out in the next 30 days, a warning is shown when you open the ETAS software.

The "Expiration Warning" window contains a list of licenses that expire in the next 30 days. The expiration date is shown for each license; in the case of borrowed licenses (see "Borrowing a License" on page 28) it shows when the borrowing period expires (i.e. the date when borrow mode runs out).



Click **Manage Licenses** to open the ETAS License Manager and install a valid license file. As soon as you have installed a valid license, you can continue to operate the ETAS software in normal operating mode.

Click **Ignore** to close the dialog box and start the ETAS software. This is only possible during the grace period; as soon as the grace period has expired, you can only continue to use the ETAS software once you have installed a valid license file.

As soon as the expiration date has been reached, you can continue to use the ETAS software for a further 14 days in what is referred to as limited mode (see "Grace Mode" on page 27). Once this phase is over, the ETAS software can only be used when a new or updated license file has been installed.

3.6 Borrowing a License

The borrowing mechanism makes it possible to work offline even when using a server-based license (i.e. without being connected to the license server).

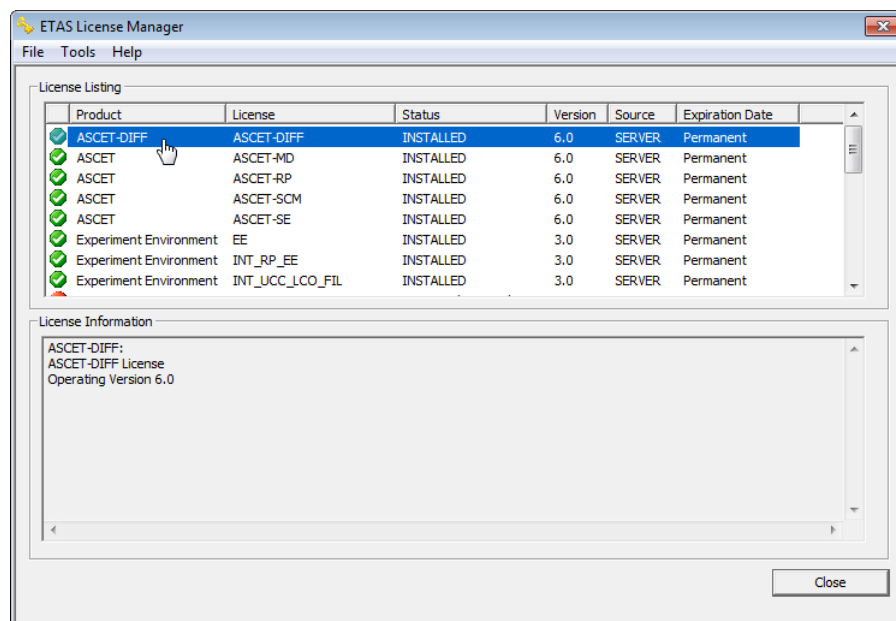
Tip

You can only borrow a license if a server-based license is being used!

To borrow a license, proceed as follows:

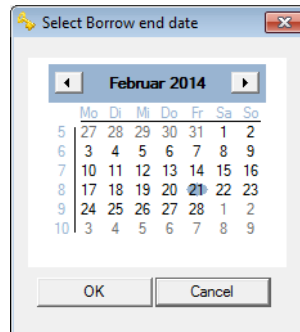
To borrow a license

- Make sure that the ETAS software whose license you want to borrow is not running.
- Select the license you want to borrow in the "License Listing" table of the ETAS License Manager.

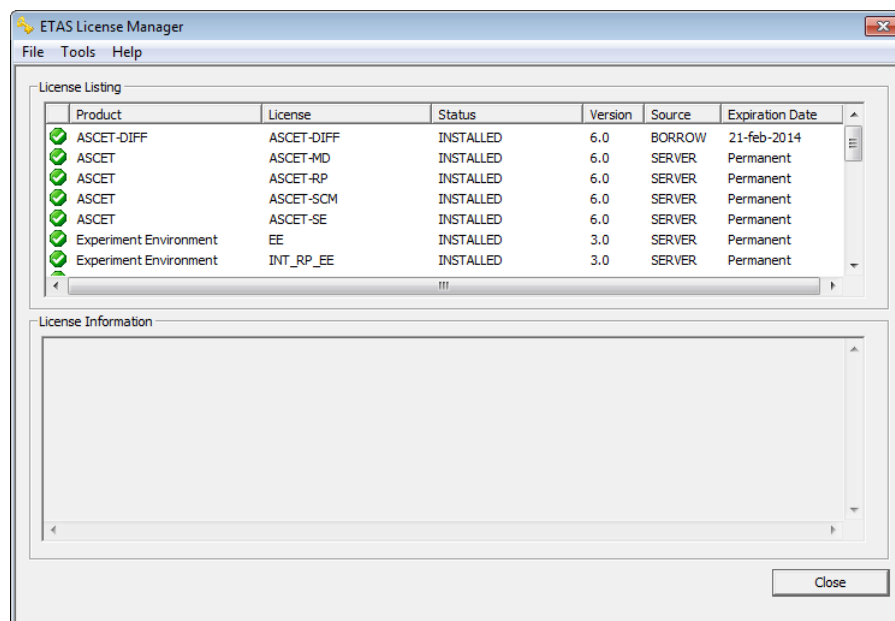


- Select **License** → **Borrow license**.
The "Select Borrow end date" dialog box opens.

- Select the date until which you want to borrow the license from the calendar displayed and click **OK**.



The text in the "Source" column of the ETAS License Manager changes from "SERVER" to "BORROW", and the expiration date of the borrowed license is displayed.



You can now use the relevant ETAS software offline until the expiration date of the borrowed license has been reached.

If you want to use the ETAS software longer than you had originally planned, you can borrow the license again. If you stop using the ETAS software earlier than planned, you can return the license to the license server early ([License](#) → [Return License Early](#)). A borrowed license can only be returned by the person that borrowed it; it cannot be returned by another person.

3.7 Customizing the Network Installation

You can change certain default settings before conducting the network installation; this also includes the access to the required licenses. The customization of the installation is done by adjusting the configuration file **install.ini**, which is located in the installation directory of the product to be installed.

4 Starting ASCET-DIFF

Depending on the way ASCET-DIFF is installed, you can start it individually or as add-on from within ASCET.

4.1 Starting the Standalone Variant

To start the standalone variant:

- In the Windows **Start** menu, go to the **ETAS** program group and select **ASCET-DIFF 6.3** → **ASCET-DIFF V6.3**.

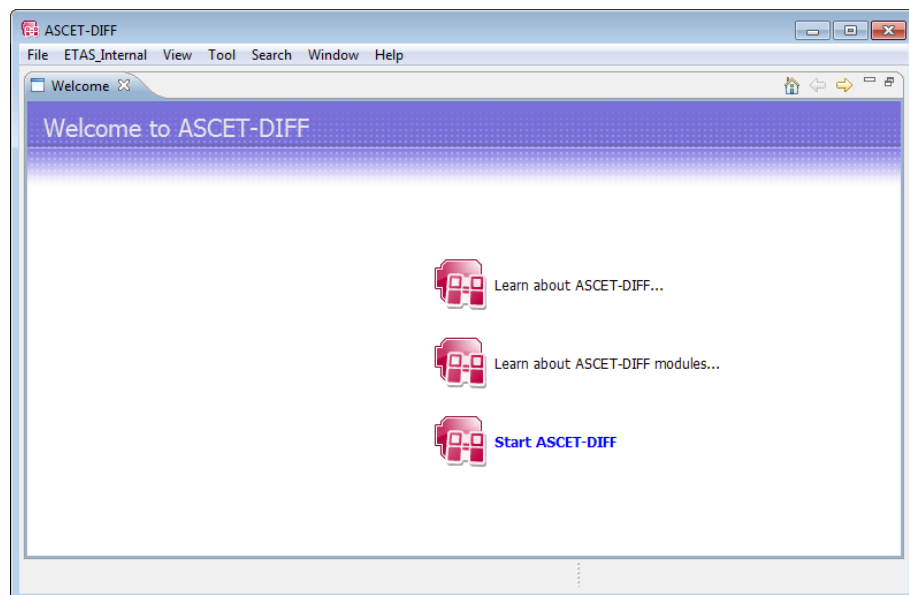
Or

- Double-click the ASCET-DIFF desktop icon.
ASCET-DIFF starts.



If no valid license file is detected, a *grace mode* is activated. That is a limited period of time during which the tool is fully operational, but a license file is searched regularly, and a warning is issued when the search fails. See also chapter 3 "Licensing the Software".

If you start ASCET-DIFF for the first time, the "Welcome to ASCET-DIFF" window opens.

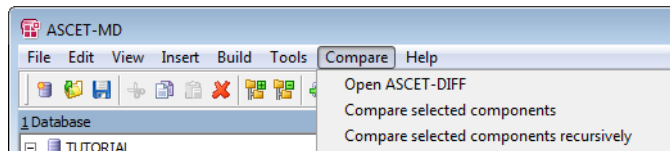


- Click on the [Start ASCET-DIFF](#) link.
ASCET-DIFF opens.

4.2 Starting the Add-On Variant

Add-On to ASCET V6.0 or Lower

If ASCET-DIFF is installed as add-on to ASCET V6.0 or lower, the **Compare** menu with the following menu items is added to the ASCET component manager.



- **Open ASCET-DIFF**
Opens ASCET-DIFF.
- **Compare selected components**
Compares two selected components.
- **Compare selected components recursively**
Compares two selected components and their included components.

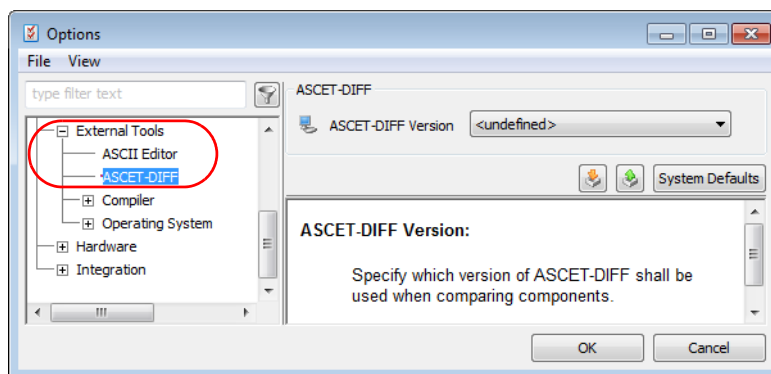
If ASCET-DIFF is installed as add-on to ASCET V6.0 or lower, and if ASCET-SCM is installed on your PC, ASCET-DIFF is made known to ASCET-SCM during installation.

Add-On to ASCET V6.1 or Higher

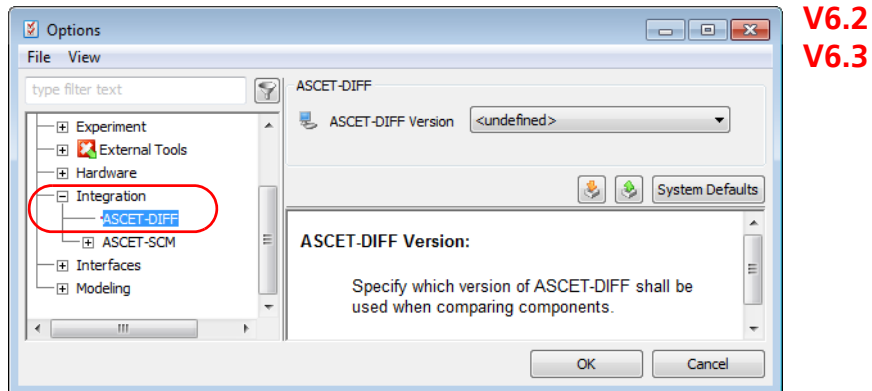
If ASCET-DIFF is installed as add-on to ASCET V6.1 or higher, you have to perform the following steps before you can use ASCET-DIFF within ASCET and—if installed—ASCET-SCM.

To set up ASCET-DIFF usage in ASCET V6.1 or higher:

- Open the ASCET component manager.
- In the component manager, select **Tools** → **Options**.
The ASCET options window opens.
- In the options window, go to the "ASCET-DIFF" node.
The nodes have been re-structured in ASCET V6.2.

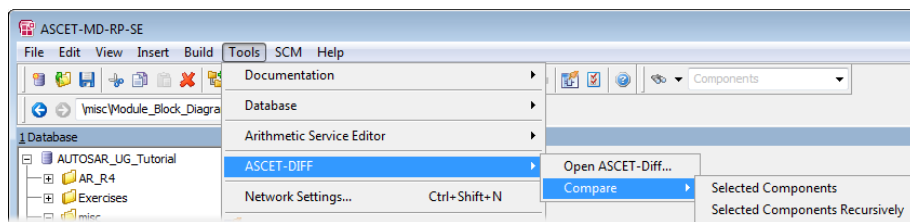


V6.1

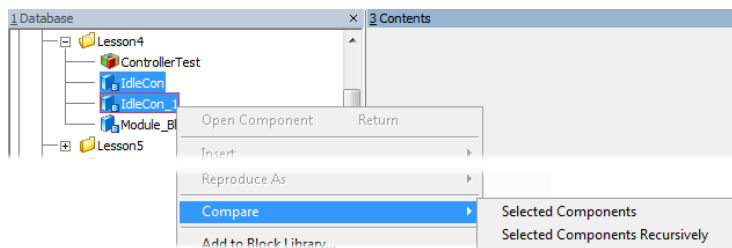


- Select the ASCET-DIFF version you want to use with ASCET V6.1 or higher.
- Click **Ok** to close the ASCET options window.

With that, the **ASCET-DIFF** submenu is added to the **Tools** menu in the ASCET component manager.



The **Compare** submenu is also available as context menu in the "1 Database" or "1 Workspace" list.



Add-On to any ASCET Version

To start ASCET-DIFF from within ASCET:

If the add-on variant of ASCET-DIFF is installed, you can access ASCET-DIFF via the ASCET component manager.

Tip

With ASCET V6.1 or later, you have to set up ASCET-DIFF usage first, see page 32

- Open the ASCET component manager.

- In the "1 Database" or "1 Workspace" field, select two components you want to compare.
1. ASCET V6.1 or later
 - Do one of the following:
 - Select **Tools** → **ASCET-DIFF** → **Open ASCET-DIFF** to start the tool without comparing the components.
 - Open the components' context menu and select **Compare** → **Selected Components** or **Selected Components Recursively**.
 - Select **Tools** → **ASCET-DIFF** → **Compare** → **SelectedComponents** or **SelectedComponents Recursively**.
 2. ASCET V6.0 or earlier
 - Do one of the following:
 - Select **Compare** → **Open ASCET-DIFF** to start the tool without comparing the components.
 - Select **Compare** → **Selected Components** or **Selected Components Recursively**.
 3. all

Selected Components compares only the selected components.

Selected Components Recursively compares the selected components and the referenced components.

The comparison is executed. ASCET-DIFF opens and displays the results.

4.3 Starting ASCET-DIFF via the Command Line

You can start ASCET-DIFF via the command line, too. Use the following syntax:

```
ASCET-DIFF "<left main file>" "<right main file>"
```

<left main file> and *<right main file>* are path and file name (including extensions) of the *.main.amd files of the components you want to compare.

ASCET-DIFF can be invoked from the command line in two different configurations:

- With switches
- Without switches

With switches: ASCET-DIFF can be invoked from the command line with switches using the following syntax:

```
ASCET-DIFF -lf <left file path> -rf <right file path>
-lc <left component name> -rc <right component name>
-lv <left version string> -rv <right version string>
```

where

- `-lf` is the left file path switch
- `-rf` is the right file path switch
- `-lc` is the left component name switch (optional)
- `-rc` is the right component name switch (optional)
- `-lv` is the left version string switch (optional)
- `-rv` is the right version string switch (optional)

The switches `-lf` and `-rf` are mandatory.

The same command line switches can also be used to specify compressed files (originally in AXL or ZIP format) having renamed file names. The file extensions can also be arbitrary, however, the component names have to be specified as arguments.

Without switches: ASCET-DIFF can also be invoked from the command line without switches. In that case, the first argument is assumed to be absolute path of the left component and the second argument is assumed to be absolute path of the right component. The following command line syntaxes are supported:

1. `ASCET-DIFF <left file path> <right file path>`
2. `ASCET-DIFF <left file path> <right file path>
<relative path of left component> <relative path of
right component>`
3. `ASCET-DIFF <left file path> <right file path> <rela-
tive path of left component> <relative path of right
component> <timestamp>`

This syntax is used for interfacing ASCET-DIFF to ASCET.

4. `ASCET-DIFF <left file path> <right file path> <left
component name> <right component name>`

This syntax can be used when left and right archive files have been renamed or have multiple components and the component names are passed as argument.

5 Starting ASCET-DIFF Model Viewer

Tip

You can only start the ASCET-DIFF Model Viewer if you have the required "ASCET-VIEW" license. Note that no Grace Mode is available for the ASCET-DIFF Model Viewer. For more information on existing licenses, see chapter "Licensing the Software" on page 23 or contact your system administrator.

The following chapters will describe how to start ASCET-DIFF in the model viewer mode using a command line prompt or the Windows context menu. It can be invoked from the command line with relative or absolute path specification.

- "Starting the Command Prompt" on page 36
- "Command Line arguments for invoking the Model Viewer" on page 37
- "Starting ASCET-DIFF Model Viewer via context menu" on page 39

5.1 Starting the Command Prompt

The installation directory of ASCET-DIFF is the starting point within the Command Prompt window. Usually this is the following path:

```
C:\Program Files (x86)\ETAS\ASCET-DIFF6.3.0
```

Then a distinction is made between the argument for relative and absolute path. How to invoke the Model Viewer using an absolute path specification is described in the following chapter. First, you must start the command prompt.

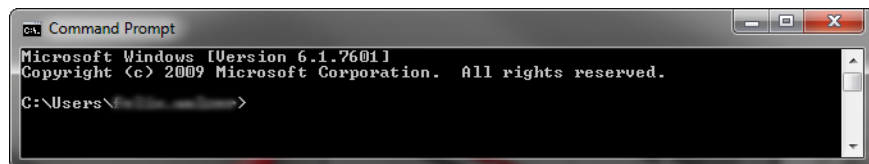
To start the command prompt and change directory to installation directory

- In the Windows **Start** menu, go to the **Accessories** program group and select **Command Prompt**.

Or

- In the Windows **Start** menu, enter "cmd" in the "Search programs and files" field and press <ENTER>.

The "Command Prompt" window opens.



- In the "Command Prompt" window, enter the syntax for changing to the installation directory.

Tip

Specifying the syntax for changing to the installation directory may vary and depends on where you installed the system. For more information on how to install ASCET-DIFF V6.3, see chapter 2.2.

If you used the default path for the 32-bit installation, use the following exemplified syntax:

```
cd C:\Program Files
(x86)\ETAS\ASCET-DIFF6.3.0
```

If you used the default path for the 64-bit installation, use the following exemplified syntax:

```
cd C:\Program Files\ETAS\ASCET-
DIFF6.3.0
```

You are now in the installation directory of ASCET-DIFF V6.3.

5.2 Command Line arguments for invoking the Model Viewer

This chapter describes how to invoke the ASCET-DIFF Model Viewer using an absolute path specification for a component within the command line prompt. Prerequisite is that you have already changed in the ASCET-DIFF installation directory (see chapter 5.1 on page 36).

Tip

*Only files with the file extension *.main.amd or *.axl will be displayed in the ASCET-DIFF Model Viewer.*

To specify the command line argument

- In the "Command Prompt" window, enter the following syntax:

```
ASCET-DIFF.exe -f "<path>\<file
name>.<format>" -c <component name>
-v <version>
```

where

- **ASCET-DIFF.exe** is the argument to start ASCET-DIFF.

- **-f "<path>\<file name>.<format>"** is the file path switch. The path of the component can be specified absolute or relative to the installation directory.

Tip

The specification of the key "-f" prior the path is optional only if no other key is used in the command line argument.

Relative:

```
(-f) "..\ASCET-DIFF 6.3\Samples\  
<file name>.<format>"
```

Absolute:

```
(-f) "C:\Program Files  
(x86)\ETAS\ASCET-DIFF 6.3\Samples\  
<file name>.<format>"
```

- **-c <component name>** is the component name switch (optional).

Tip

The specification of the component name key "-c" is not necessary for axl files (.axl) if the file contains only one component with the same name.*

- **-v <version>** is the version string switch (optional).

The following graphic shows the command prompt window including an exemplary command line argument:

```
C:\windows\system32\cmd.exe
C:\Program Files (x86)\ETAS\ASCET-DIFF6.3.0\ASCET-DIFF.exe -f "<path>\<file name>.<format>" -c <component name> -v <version>_"
```

- Press <ENTER>.

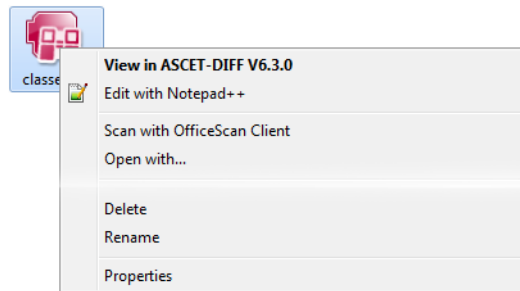
The command will be executed and ASCET-DIFF will be invoked in the Model Viewer mode displaying the specified component.

5.3 Starting ASCET-DIFF Model Viewer via context menu

This chapter describes how to invoke the ASCET-DIFF Model Viewer using the Windows context menu.

To start the Model Viewer via context menu

- In the Windows file explorer, right-click on the file (e.g. *.ax1) you want to view.
The respective context menu opens.



- Click on **Open with**.
The "Open with" window opens.
- Select ASCET-DIFF .exe to open this file.

Tip

With the checkbox "Always use the selected program to open this kind of file" you can set the selected program as default. Once you have set the default program, you can start the ASCET-DIFF Model Viewer directly over the entry "View in ASCET-DIFF V6.3.0" in the windows context menu.

- Click **OK**.
ASCET-DIFF V6.3 starts in the model viewer mode.

6 **ETAS Contact Addresses**

ETAS HQ

ETAS GmbH

Borsigstraße 14
70469 Stuttgart
Germany

Phone: +49 711 3423-0
Fax: +49 711 3423-2106
WWW: www.etas.com

ETAS Subsidiaries and Technical Support

For details of your local sales office as well as your local technical support team and product hotlines, take a look at the ETAS website:

ETAS subsidiaries WWW: www.etas.com/en/contact.php
ETAS technical support WWW: www.etas.com/en/hotlines.php

Index

A

- add-on to ASCET
 - ASCET V6.0 or lower 32
 - ASCET V6.1 or higher 32
 - enable usage (ASCET V6.1 or higher) 32
 - install 15
 - start 33
- ASCET-DIFF
 - and ASCET-SCM 32
 - associate with ASCET 15
 - enable usage (ASCET V6.1 or higher) 32
 - install 9
 - path specification 14
 - select components 12
 - select installation type 12
 - start from ASCET 33
 - start from command line 34
 - start installation 10
 - start standalone variant 31
 - uninstall 18, 21
 - workspace path specification 15

B

- borrow licence 28

C

- check license status 25

command line

- installation 17
- side-by-side 18
- silent installation 17
- start ASCET-DIFF 34
- uninstallation 18

E

- ETAS Contact Addresses 40
- ETAS license models 23

G

- grace mode 27, 31

I

Installation

- ASCET-DIFF 9
- associate with ASCET 15
- command line 17
- command line + side-by-side 18
- license agreement 11
- path specification 14
- select components 12
- select type 12
- set licensing behavior 19
- silent 17
- start 10
- system prerequisites 9
- uninstall ASCET-DIFF 21
- without administrator privileges 9
- workspace path specification 15

L

License

- add 25
- borrow 28
- check status 25
- expiration warning 27
- get a ~ 24
- grace mode 27
- license file 25
- license models 23

Licensing 23

- grace mode 27, 31
- set behavior 19

P

Product liability disclaimer 5

S

Safety Instructions

- technical state 6
- silent installation 17
- standalone variant 17
- start 31

U

uninstallation 18, 21