
ASCET V6.0

Installation

Copyright

The data in this document may not be altered or amended without special notification from ETAS GmbH. ETAS GmbH undertakes no further obligation in relation to this document. The software described in it can only be used if the customer is in possession of a general license agreement or single license. Using and copying is only allowed in concurrence with the specifications stipulated in the contract.

Under no circumstances may any part of this document be copied, reproduced, transmitted, stored in a retrieval system or translated into another language without the express written permission of ETAS GmbH.

© **Copyright 2008** ETAS GmbH, Stuttgart

The names and designations used in this document are trademarks or brands belonging to the respective owners.

Document EC019906 R6.0.1 EN

Contents

1	General Information	5
1.1	About this Manual	5
1.2	Documentation Conventions	5
1.3	Typographic Conventions	6
2	Program Installation	7
2.1	Preparation	7
2.1.1	Contents	7
2.1.2	System Requirements	7
2.1.3	Required User Privileges for Installation and Operation	8
2.2	Installation	11
2.2.1	Initial Installation – ASCET Base System.	11
2.2.2	Installation – ASCET-MD and Other ASCET Products	18
2.2.3	Special Installation Steps and Dialogs	19
2.2.4	Command Line Installation	22
2.3	Network Installation	24
2.3.1	Providing Data in the Network	24
2.3.2	Customizing the Network Installation	24
2.3.3	Installing ASCET from the Network Drive	28
2.4	ASCET Directories	29

2.4.1	Default Storage Directories	29
2.4.2	Changing Default Directories	30
2.5	Uninstalling ASCET	31
2.5.1	Automatic Uninstall	31
2.5.2	Custom Uninstall	33
3	Licensing	37
3.1	Obtaining Licenses	37
3.2	Borrowing Licenses	42
4	ETAS Contact Addresses	43
	Index	45

1 **General Information**

The ASCET product family provides an innovative solution for the functional and software development of modern embedded software systems. ASCET products support every step of the development process with a new approach to modelling, code generation and simulation, thus making higher quality, shorter innovation cycles and cost reductions a reality.

This manual describes the installation of ASCET products. The products themselves are described in manuals or online help files.

1.1 **About this Manual**

The ASCET installation guide contains the following chapters:

- **"General Information"** (this chapter)
This chapter provides some basic information regarding this manual.
- **"Program Installation"**
This chapter targets both all users who install, maintain or uninstall ASCET on a PC or a network as well as system administrators who provide ASCET on a file server so that the program can be installed via the network. It contains important information on the scope of delivery, hardware and software requirements for stand-alone and network installations and the preparation required for installation. The chapter also describes the procedures used to install and uninstall ASCET.
- **"Licensing"**
This chapter contains various licensing information, e.g. how to obtain a license file or how to borrow a license.
- **"ETAS Contact Addresses"**
Contact information of the various ETAS subsidiaries.

1.2 **Documentation Conventions**

All actions to be performed by the user are presented in a task-oriented format as illustrated in the following example. A *task* in this manual is a sequence of actions that have to be performed in order to achieve a certain goal. The title of a task description usually introduces the result of the actions, e.g. "To create a new component", or "To rename an element". Task descriptions often contain illustrations of the particular ASCET window or dialog box the task relates to.

To achieve a goal:

Any preliminary information...

- Step 1
Explanations are given underneath an action.
- Step 2
Any explanation for Step 2...
- Step 3
Any explanation for Step 3...

Any concluding remarks...

1.3 Typographic Conventions

The following typographic conventions are used in this booklet:

Select **File** → **Open**.
Click **OK**.

Menu commands and buttons are shown in **blue boldface**.

The "Open File" dialog window opens.

Names of program windows, dialog windows, fields, etc. are shown in quotation marks.

Select the file `setup.exe`.

Text in drop-down lists on the screen, program code, path- and file names are shown in the `Courier` font.

The OSEK group (see <http://www.osekvd.org/>) has developed certain standards.

Links to internet documents are set in blue font.

Important notes for the users are presented as follows:

Note

Important note for users.

2 Program Installation

The chapter entitled "Program Installation" targets both all users who install ASCET on a PC or a network, or maintain and uninstall the program as well as system administrators who provide ASCET on a file server so that the program can be installed via the network. It contains important information on the scope of delivery, hardware and software requirements for stand-alone and network installations and the preparation required for installation. The chapter also describes the procedures used to install and uninstall ASCET.

2.1 Preparation

Check the items supplied for completeness and your computer for compliance with the system requirements. Depending on the operating system used and the network connection, you have to make sure that you have the user privileges required.

2.1.1 Contents

ASCET is supplied with the following:

- ASCET CD ROM
 - ASCET program files
 - ASCET manuals and ETAS hardware documentation in PDF format (Acrobat Reader)
 - Manual "FLEXnet Licensing End User Guide" in PDF format
 - Acrobat Reader program files

Furthermore, you require a valid license for the use of ASCET products. You can obtain the license files required for licensing either from your system administrator or through a self service portal on the ETAS Internet Site; the URL is given in the entitlement letter. To request the license file you have to enter the activation number which you received from ETAS during the ordering process.

2.1.2 System Requirements

The following system requirements have to be met:

- 1 GHz Pentium PC (recommended: 2 GHz)
- WINDOWS® 2000, WINDOWS® XP, WINDOWS® Vista
- 512 MB RAM (recommended: 512 MB)
- Hard disk with a minimum of 1 GB of free space (not including space for program data; recommended: > 1 GB)

- CD ROM drive
- VGA graphics card with VGA monitor and a resolution of at least 800 x 600 with 256 colors

2.1.3 Required User Privileges for Installation and Operation

User privileges required for installation:

In order to install ASCET on a PC, you need the user privileges of an administrator. Please contact your system administrator, if necessary.

User privileges required for operation:

In order to operate ASCET, each user must receive the privilege called "Increase Scheduling Priority" from the administrator. This can be set using the User Manager.

Note

You need administrator rights to perform the settings described below.

Recommendation: Assign the privilege "Increase Scheduling Priority" to the local "User" group. To do so, proceed as follows:

To assign WIN 2000 – User Privilege "Increase Scheduling Priority":

- From the Windows Start Menu, choose **Settings** → **Control Panel** → **Administrative Tools** → **Local Security Policy**.
- Under **Local Policies** → **User Rights Assignment** activate **Increase scheduling priority** by double-clicking on it.
- Click on the **Add** button.
- Select the local workstation.
- Assign the "Increase Scheduling Priority" privilege to the **User** group by double-clicking on it.
- Confirm by clicking the **OK** button.
- Close the "Local Security Policy" window by clicking **OK**.
- Exit the local security policy settings.

To assign WIN XP – User Privilege "Increase Scheduling Priority":

- From the Start Menu, choose **Settings** → **Control Panel** → **Administrative Tools** → **Local Security Policy**.
- Under **Local Policies** → **User Rights Assignment** activate **Increase Scheduling Priority** by double-clicking on it.
The "Increase scheduling priority Properties" window is displayed.
- Click on the **Add User or Group** button.
The "Select Users or Groups" window is displayed.
- Click on the **Locations** button.
The "Locations" window is displayed.
- Select the local workstation and close the "Locations" window by clicking **OK**.
- In the "Select Users or Groups" window, click on the **Advanced** button to enable the automatic search feature.
- Click on the **Find now** button to display the list of users registered for the local workstation.
- In the "Name (RDN)" column, choose the names of the users or groups to whom you want to assign the privilege to increase the scheduling priority.
- Confirm by clicking the **OK** button.
- Close the "Select Users or Groups" window by clicking **OK**.
- Close the "Increase scheduling priority Properties" window by clicking **OK**.
- Exit the local security policy settings.

To assign WIN Vista – User Privilege "Increase Scheduling Priority":

- From the Start Menu, select **Control Panel** → **System and Maintenance** → **Administrative Tools** → **Local Security Policy**.

- Under **Local Policies** → **User Rights Assignment** activate **Increase Scheduling Priority** by double-clicking on it.
The "Increase scheduling priority Properties" window is displayed.
- Click on the **Add User or Group** button.
The "Select Users, Computers or Groups" window is displayed.
- Click on the **Locations** button.
The "Locations" window is displayed.
- Select the local workstation and close the "Locations" window by clicking **OK**.
The "Select Users, Computers or Groups" window is renamed to "Select Users or Groups".
- In the "Select Users or Groups" window, click on the **Advanced** button to enable the automatic search feature.
Another window named "Select Users or Groups" opens.
- Click on the **Find now** button to display the list of users registered for the local workstation.
- In the "Name (RDN)" column, choose the names of the users or groups to whom you want to assign the privilege to increase the scheduling priority.
- Confirm by clicking the **OK** button.
- Close the first "Select Users or Groups" window by clicking **OK**.
- Close the "Increase scheduling priority Properties" window by clicking **OK**.
- Exit the local security policy settings.

2.2 Installation

To install one of the add-on products (e.g., ASCET-MD, ASCET-RP, ASCET-SE, ASCET-SCM), you have to install the ASCET base system first. ASCET-SCM requires, in addition, the installation of either ASCET-MD, ASCET-RP or ASCET-SE.

Installation is performed in the same way if you install ASCET from the CD or the network drive.

Chapter 2.2.1 describes the installation of the base system in detail. The installation of add-on products is briefly described in chapter 2.2.2; if additional information is required, see the respective manuals or release notes.

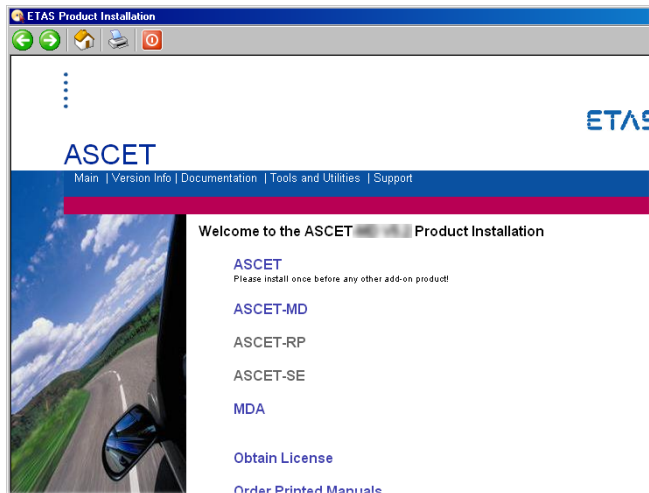
Special issues to be observed during the installation (e.g., "Canceling the Installation" or "Overwriting an Existing Program Version") are described in chapter 2.2.3 on page 19. Chapter 2.2.4 contains information on command-line installation.

2.2.1 Initial Installation – ASCET Base System

To start the ASCET installation:

- Insert the installation CD into the CD drive of your computer.
- If the CD does not start automatically, double-click on `start.exe`.

An installation dialog opens.



- Click on the [ASCET](#) link to install the ASCET base system.

Note

You must install the ASCET base system before you can install ASCET-MD or any other ASCET product except ASCET-DIFF.

- The installation starts.

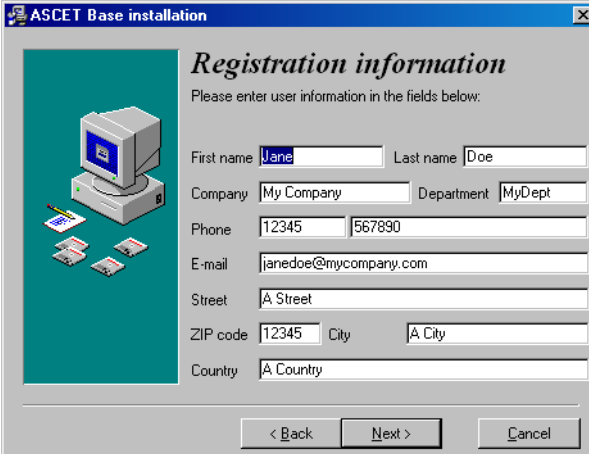
Follow the instructions:

- In the "EULA" window, activate the **Accept** option to accept the license agreement.
- Click **OK**.
- Follow the instructions displayed on the screen.

The **Next** button accepts your settings and proceeds to the next window, the **Back** button returns to the previous window, and **Cancel** aborts the installation.

To register ASCET:

- In the registration window, enter your personal information.

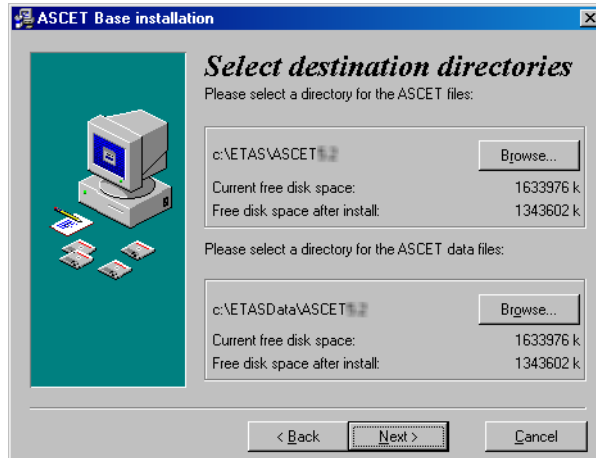


The screenshot shows a Windows-style dialog box titled "ASCET Base installation". On the left is a graphic of a computer monitor, keyboard, and mouse. The main area is titled "Registration information" and contains the instruction "Please enter user information in the fields below:". The form fields are: First name (Jane), Last name (Doe), Company (My Company), Department (MyDept), Phone (12345 567890), E-mail (janedoe@mycompany.com), Street (A Street), ZIP code (12345), City (A City), and Country (A Country). At the bottom are buttons for "< Back", "Next >", and "Cancel".

- Click on the **Next** button.

To specify ASCET paths:

When you have registered ASCET, you will be prompted to specify target directories for the data. This is done in two separate windows:



Program *files* and program *data* are stored in different directories. When you uninstall or update the program later, only the program files will be deleted or overwritten. The program data will continue to be available to you. The program data includes the following:

- Databases
- User profiles

Note

You can install ASCET in a directory with blanks in its path. Before you do so, however, make sure that all external tools used with ASCET support path names with blanks, too.

- If you want to change the default directories, click on the **Browse** button.
- In the dialog box, select the desired directory. If you specify a directory which does not exist, the installation routine will automatically create it.

- Click on the **Next** button.
The "Select global directories" window opens. Here, you can specify paths for log files and temporary files. These paths are used by all ETAS products.
- Use the **Browse** buttons to adjust the paths settings according to your wishes.
- Click on the **Next** button.

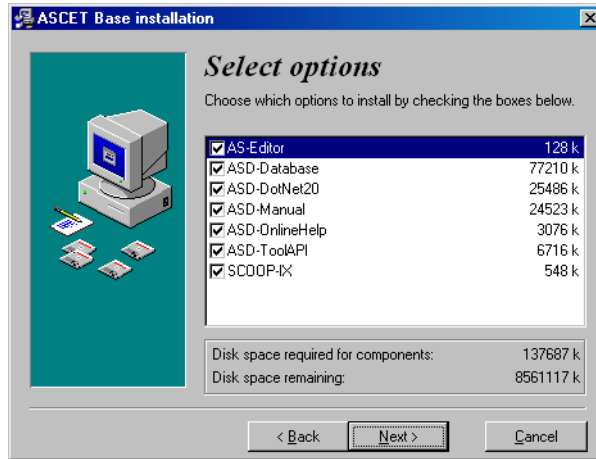
Settings for common files:

In the "Select Handling of ETAS-Shared modules" window, you specify the way the modules used in principle by all ETAS products are installed.

- Activate the **share modules between products** option when the modules are to be conjointly used.
This is reasonable when you intend to use several ETAS products simultaneously.
- Activate the **use local copies for each product** option when ASCET shall be installed with its own copies of the modules, e.g., when you intend to adjust the components.
- Click on the **Browse** button to adjust the path settings for the modules.
- Click on the **Next** button.

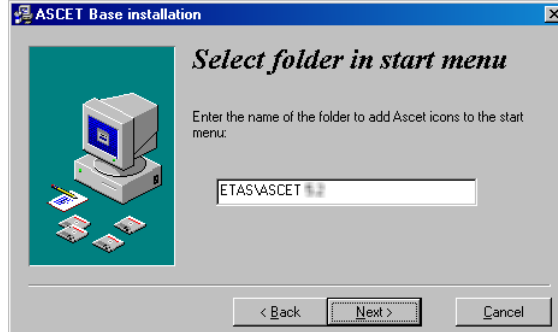
To specify the ASCET functional scope:

In the "Select options" window, you can specify the functional scope of ASCET.



- Mark the modules you want to install.
The following options can be selected:
 - *AS-Editor* – the arithmetic services editor.
 - *ASD-Database* – installs the ETAS system library and tutorial database in the export directory of your ASCET installation.
 - *ASD-Manual* – installs the ASCET manuals as PDF files in the `ETAS\ETASManuals` directory.
 - *ASD-OnlineHelp* – the ASCET online help is placed in the `ETAS\ASCET6.0\help` directory.
 - *ASD-ToolAPI* – installs the ASCET Automation interface.
- Click on the **Next** button.

To specify the ASCET folder in the Start menu:



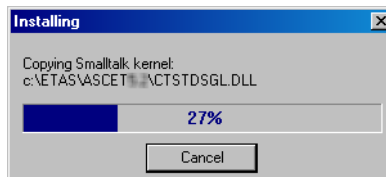
- Accept the default folder name
- or
- specify a different folder name.
- Click on the **Next** button.

Installing ASCET:

Note

With the next step, you start the installation.

- In the "Ready for installation" window, click **Next** to start the installation.
The program files will be copied. A bar chart indicates the copy progress.



If necessary, the ETAS license manager is installed with the program.

Finally the "Installation complete" window appears.

- In the "Installation complete" window, click on the **Finish** button to finish the installation.

After restarting your PC, you will find the folder name you specified with the following entries in the Start menu:

- **ASCET Help**
Opens the ASCET online help.
- **ASCET Uninstall**
Starts the uninstall routine (see chapter 2.5).
- **ASCET V6.0**
Starts the ASCET program.
- **AS Editor**
Starts the AS Editor (see ASCET online help for more information).
- **ETAS Network settings**
Starts the assistant for the configuration of the ETAS network.
- **LicenseInfo**
Starts the "Obtain License Info" window (cf. chapter 3).
- **Online manuals**
If you installed the online manuals, you can here open the ETAS\ETASManuals directory. Here, the manuals are stored in several subdirectories.
- **PC RemoteControl**
Enables the configuration of the remote interface.
- **ReadMe**
Provides current information on ASCET V6.0.

The ETAS License Manager has a separate folder **License Management** in the ETAS program group of the Start menu.

Three sample files are located in the `export` directory of your ASCET installation; they are available as `*.exp` or `*.aml` files. They can be imported in any ASCET database.

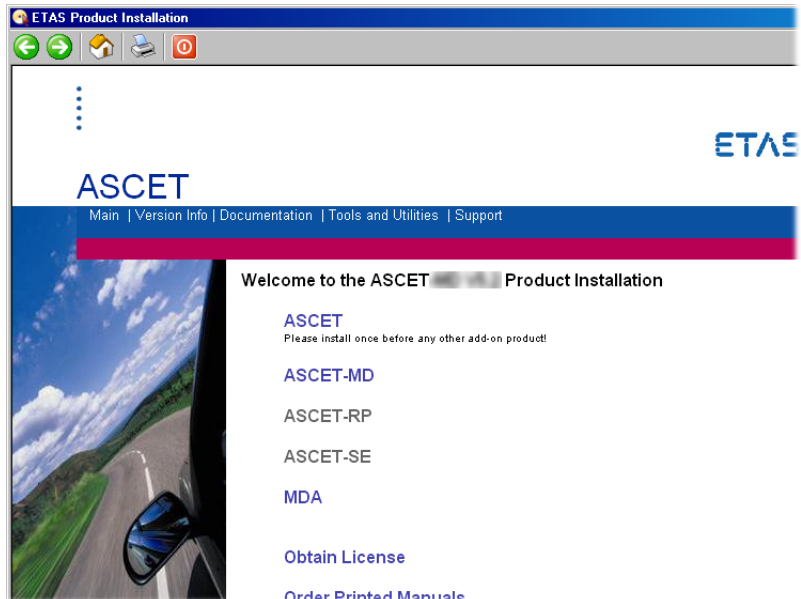
- `SystemLibETAS.*` and `ETASSystemLibCT.*` – ETAS system libraries (containing various basic modelling blocks such as the PT1 element or other basic filter elements, integrators, etc.)
- `Tutorial.*` – ETAS tutorial

2.2.2 Installation – ASCET-MD and Other ASCET Products

After installing the basic system, you can install ASCET-MD or other ASCET add-on products.

To install ASCET add-ons:

- Re-open to the installation dialog.



- Click on the [ASCET-MD](#) link (or the link of another ASCET product you want to install).

Note

You must install the ASCET base system before you can install ASCET-MD or any other ASCET product except ASCET-DIFF. ASCET-SCM can only be used if ASCET-MD, ASCET-SE or ASCET-RP is installed, too.

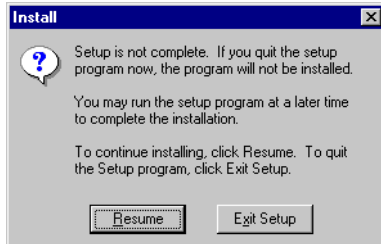
- Follow the instructions on the installation dialogs.
The selected product is installed.

2.2.3 Special Installation Steps and Dialogs

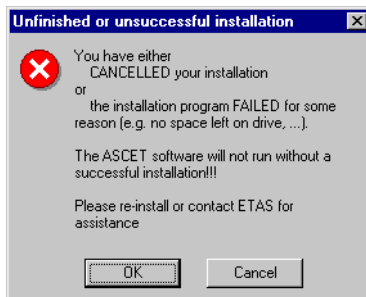
To cancel the installation:

Before you click **Next** in the "Ready for installation" window, you can still cancel the installation prematurely. Proceed as follows:

- Click the **Cancel** button in the current window.



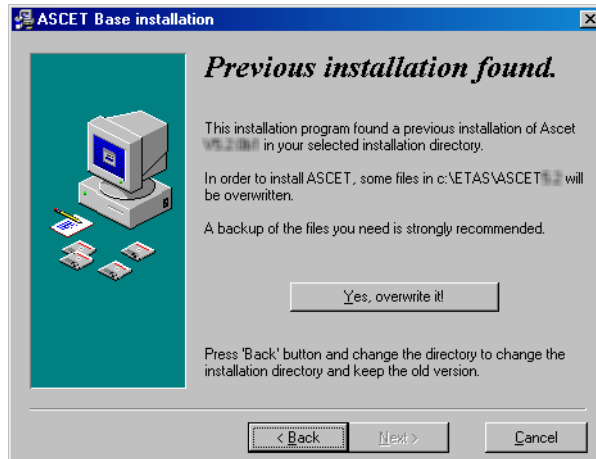
- Click **Resume** to return to the previous dialog box.
- Click the **Exit Setup** button to quit the setup program.



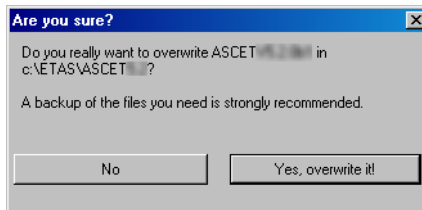
- Confirm that you want to cancel the installation by clicking **OK**.

To overwrite an existing program version:

If an older version of the software to be installed is found on the target workstation, or if an entirely different software exists in the selected installation directory, a corresponding dialog box appears. The following sample dialog box would appear during the installation of Version 6.0.0, if (beta) version 6.0.0b1 would have already been installed on the target workstation.



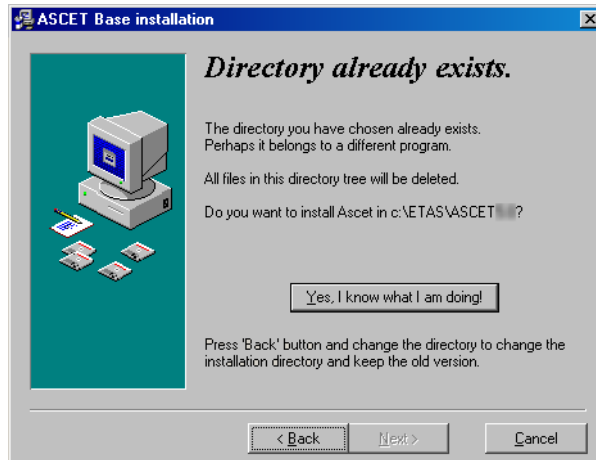
- Read the instructions carefully.
You are informed that an older installation has been found, and that files will be overwritten when you continue.
- To select a different directory, click the **Back** button.
- If you want to overwrite the existing files, click the **Yes, overwrite it** button.



- Acknowledge the confirmation prompt by clicking **Yes, overwrite it!**
Click **No** to return to the previous window.

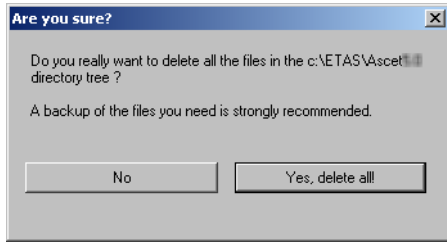
To overwrite existing directories:

If the directories specified during the installation already exist, and a complete ASCET installation does not exist on the target workstation, the following dialog window appears. This case occurs, e.g., if a previous installation process has been canceled.



- Read the instructions carefully.
You are informed that the directory you selected already exists.
- To select a different directory, click the **Back** button.

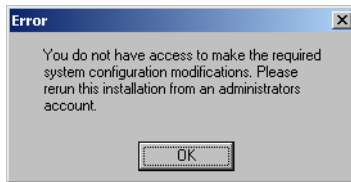
- If you want to overwrite the existing directories, click the **Yes, overwrite it** button.



- Acknowledge the confirmation prompt by clicking **Yes, delete all!**
ASCET is installed; existing files are deleted.
Click **No** to return to the previous window.

Performing an installation without administrator privileges:

This message box appears if the user name under which you logged on to Windows has no administrator privileges. After you acknowledge the message, the installation is terminated because administrator privileges are prerequisites for the installation of ASCET.



- Confirm by clicking **OK**.
This installation is terminated.
- Please contact your system administrator.
- Try the installation again after you have received the required privileges.

2.2.4 Command Line Installation

When you start the installation from a command line, you can use several command line arguments to customize the installation.

/silent or /s

Silent installation mode. With this installation mode, no dialog windows requiring user information open. Default values, or values from the `install.ini` file, are used for all information normally requested in installation windows. Error messages are hidden, too.

Silent installation is started as hidden process. An icon appears in the system tray during installation, but you cannot access the process.

A log file `silent.log` is created in the ASCET installation directory. It uses the `*.ini` file format with a section for each ASCET product installed in silent mode. As long as the installation is running, the respective section contains a line

```
install=in progress
```

After a successful installation, that line is changed to

```
install=successfully finished
```

If a reboot is required after installation, the reboot is performed automatically, unless you prevent it by an entry¹ in `install.ini`. The following line is added to the respective section in any case:

```
need_reboot=yes
```

Note

/silent must be the first command line argument. If other arguments precede it, /silent has no effect.

/basic

Basic installation mode. In this installation mode, no dialog windows requiring user information open, except the EULA window. The basic installation mode works as the silent installation mode, except that animations, the progress bar and error messages are shown and no log file similar to `silent.log` is created.

Note

For some ASCET products, environment variables can be defined, or preferences must be set in the `install.ini` file to control silent or basic installation. See the respective documentation for details.

¹. [SilentInstallation]
;prevents a silent installation from rebooting when
;set to "Suppress"
Restart=Suppress

/ini="<MyPath>\<IniFileName>.ini"

By default, the `install.ini` file in the installation file directory is used for installation. It may be reasonable, however, to use different installation `*.ini` files for different installations, e.g. if several customers install ASCET products from one central share.

If an installation `*.ini` file is located outside the installation file directory, it is accessed via `/ini="<MyPath>\<IniFileName>.ini"`.

If an installation `*.ini` file is located inside the installation file directory, it is accessed via `/ini=".\<IniFileName>.ini"`.

/? /h

Opens window with the valid command line arguments.

2.3 Network Installation

In addition to the installation from the CD, you can also install ASCET from a network drive on the PC.

The network installation provides the benefit that you can adjust data even before the actual installation on the workstation takes place (see section 2.3.2).

2.3.1 Providing Data in the Network

To provide data in the network, you have to copy the installation files from the CD to the desired network drive.

To provide data on the network server:

- Create a source directory on the desired network drive.
- Copy all data from the CD to the source directory.

Installation Log

The network installation of a user is logged in a file on the network. Therefore, *all* users need write access to the `x:\user` directory or to the directory specified in `install.ini` for the registration.

2.3.2 Customizing the Network Installation

You can customize ASCET (modifying specific default settings) even before the user installs ASCET on his workstation.

You have the following customizing options for the network installation:

- You can customize the installation dialogs (modifying the default settings for, e.g., directories, etc.).
- You can perform the ASCET installation fully automatically and without user intervention invisibly in the background.
- You can overwrite the files provided in the product data directory (default setting: [drive] : \ETASdata\ASCET6.0\...) with your customized files and/or add files to the existing directories.

Customizing Installation Dialogs

For the network installation in large enterprises, it is often necessary to customize certain default settings during the installation to fit internal standards and requirements. This is possible by means of the `install.ini` configuration file. This file is located in the installation directory.

The following example will show you how to modify the default settings.

To customize the configuration file:

- Open the `install.ini` file with a text editor.

The following is a typical example of an entry in this INI file:

```
;Sets the main directory of ASCET
;MainDir=c:\etas\ASCET6.0
```

- To modify the default setting, delete ";" (comment) on the line with the `MainDir` keyword.
- Change the path to, e.g.,
`H:\programs\etas\ASCET6.0`.

The entry should now look like this:

```
;Sets the main directory of ASCET
MainDir=H:\programs\etas\ASCET6.0
```

- In the same way, modify all other entries in `install.ini` as desired.
- Save your changes and then close the editor.

When you now start the installation with `Ascet.exe`, the dialog boxes will show the new settings as defaults.

Note

The modified path settings affect the functions described below.

Automatic Installation

By calling `Ascet.exe /s` you can execute the ASCET installation fully automatically and transparently in the background, i.e., without any required user interaction. This will select the currently valid default settings. You can configure these settings in the `install.ini` file (see "Customizing Installation Dialogs" on page 25).

If you as the system administrator create a batch file containing the `ascet.exe /s` command, and configure the required settings in `install.ini`, the users can run the installation process themselves by executing this batch file without the need to enter any further information.

As this type of installation does not display any dialog boxes, you may want to provide some mechanism to inform the user when the installation has finished.

Customizing ASCET Files

The customization feature described below allows you to control the installation routine so that certain default files are overwritten with your customized files during the installation, or that other files are included in the installation.

In this way, you can integrate your customized databases, user profiles, and window templates in the installation routine.

The mechanism is relatively simple. Create a subdirectory named `InstData\...` in the installation directory and copy your customized files into it while maintaining the proper directory structures.

To create your customized files, install ASCET on a test computer, and use this to create the files.

After the default installation of ASCET, the `ETASData\ASCET6.0\...` directory contains various subdirectories with files that determine the ASCET default settings which you can customize. These include the following subdirectories:

- `Database\DB\`
The `db` subdirectory contains the default database. Here you can, e.g., create another demo database under `Database\DemoDB\`.
- `User\[user name]`, depending on the windows login
The `[user name]` subdirectory contains the default user profile. All configurable options are stored in this subdirectory.

Customizing Data for Network Installation:

- [Install ASCET on your PC.](#)
- [Start ASCET.](#)

- [Modify the user profile.](#)
- [Modify the database or add a new database.](#)
- [Exit ASCET.](#)

You have finished your customization and now want to integrate these files in the installation routine. You have two choices.

- Overwrite existing files having the same name with your customized files. To be able to do this, you must create a folder named `InstData\overwrite\` in the installation directory.
- Rename your customized files and add them to the existing files. There are no files with the same name that will be overwritten. To be able to do this, you must create a folder named `InstData\add-only\` in the installation directory.

To include your customized files in the installation routine, be sure to copy also the parent directories. Note that the `ETASData\ASCET6.0\` directory level must be the same as `InstData\overwrite\` or `InstData\add-only\`.

Examples:

```
InstData\overwrite\user\userDef.ini
```

```
InstData\add-only\database\additionalDB\
```

To integrate a modified user profile:

- [Copy your customized file `ETASData\ASCET6.0\user\\[user name\]\Ascetsd.ini` into the `InstData\overwrite\user\` subdirectory.](#)
- [Rename the `Ascetsd.ini` file to `user-Def.ini`.](#)
This ensures that this initialization file will be used after the installation for each new user.

To integrate a modified database:

- [Copy your customized database, i.e., the `\database\DB\` subdirectory into the `InstData\add-only\...` subdirectory.](#)

- Rename the db directory as desired, otherwise the database will not be copied.

Of course, you could also overwrite the db database by using the `InstData\overwrite\` directory.

When starting the installation routine with `ascet.exe`, the default files will be replaced with your customized files and/or your new files will be added in the corresponding directories.

2.3.3 Installing ASCET from the Network Drive

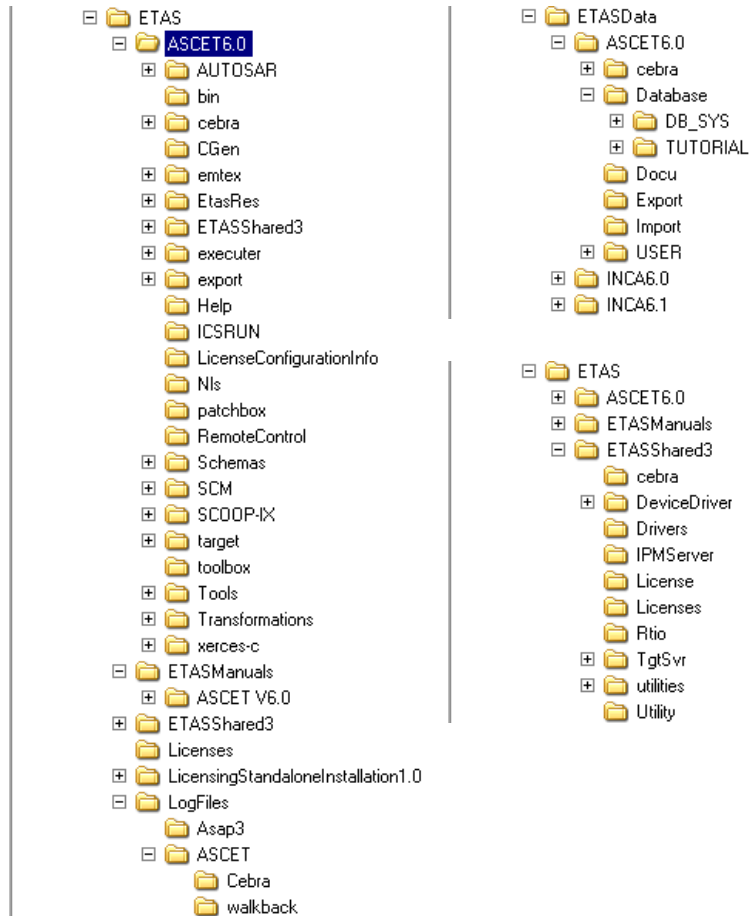
The installation from a network drive is described under "Installation" on page 11. You only need to know on which drive and in which source directory the installation files are located.

Note

To install ASCET from a network drive, you need write access to the log directory on the network drive (see chapter 2.3.1).

2.4 ASCET Directories

When installing ASCET, the following directory structure is created on the installation disk (unless you modify the path settings):



2.4.1 Default Storage Directories

- Database
ETASData\ASCET6.0\Database
- Export
ETASData\ASCET6.0\Export

- Import
ETASData\ASCET6.0\Export
- generated code
ETAS\ASCET6.0\CGen
- automatically generated documentation
ETASData\ ASCET6.0\Docu

2.4.2 Changing Default Directories

You can use the "Options" dialog window to change the default storage directories. To do so, proceed as follows:

To change the default storage directories:

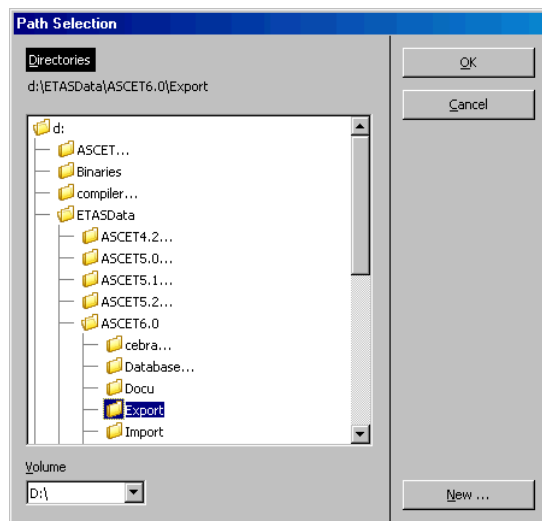
- In the Component Manager, select the menu option **Tools** → **Options**.

The ASCET options window opens. You can change the database path in the "Options" node, the export/import path in the "Export"/"Import" node, the code generation path in the "Build" node, and the documentation path in the "Documentation" node.



- Click on the button next to the path you want to change.

The "Path selection" window opens.



- Specify the directory you want to use as default for the selected option.
- Click **OK**.
The selected directory is displayed in the "Options" window.
- Repeat these steps for each option you want to change.
- When you are ready, click **OK** in the "Options" dialog to accept the changes, or click **Cancel** to discard the changes.

2.5 Uninstalling ASCET

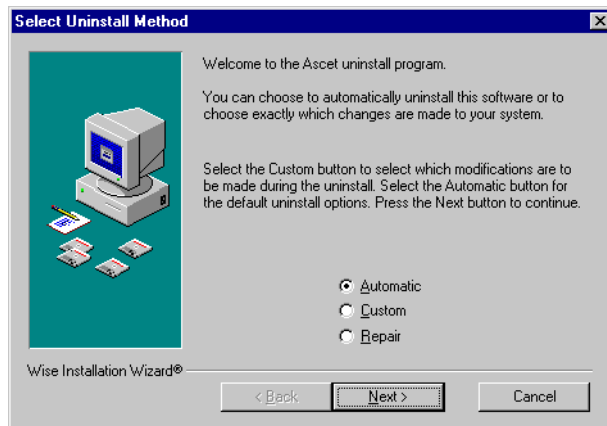
When ASCET is uninstalled, *all* add-ons on the computer are uninstalled, too. You can uninstall only the entire ASCET product family, not separate products as ASCET-MD, ASCET-SE or ASCET-RP.

2.5.1 Automatic Uninstall

To uninstall ASCET (automatically):

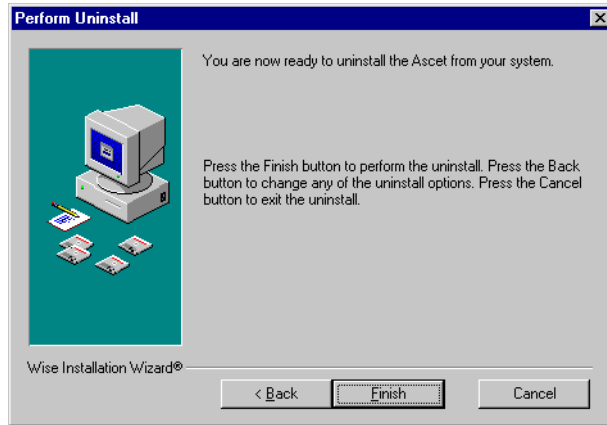
- From the program group of the start menu, select **ASCET Uninstall**.

The following window is displayed:

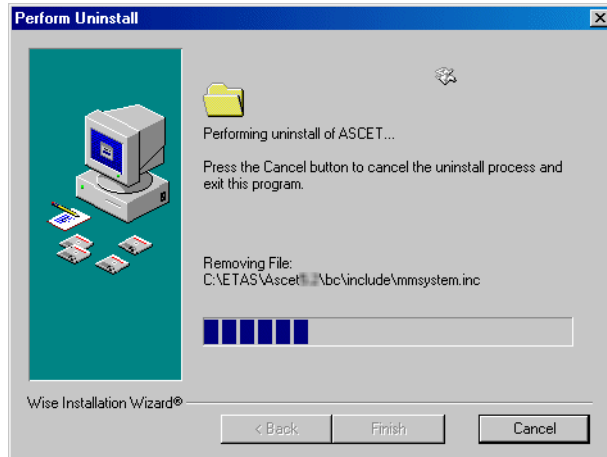


- Select **Automatic**.

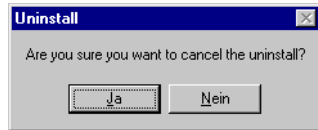
- Click the **Next** button.



- Click the **Finish** button to execute the uninstall process.



You can cancel the uninstall process. If you click the **Cancel** button, the following window appears:



Note

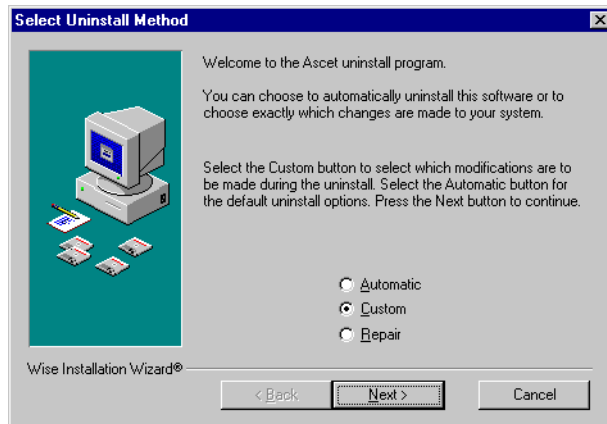
If data has already been deleted, ASCET must be reinstalled.

2.5.2 Custom Uninstall

To uninstall ASCET (user-defined):

- From the program group of the start menu, select **ASCET Uninstall**.

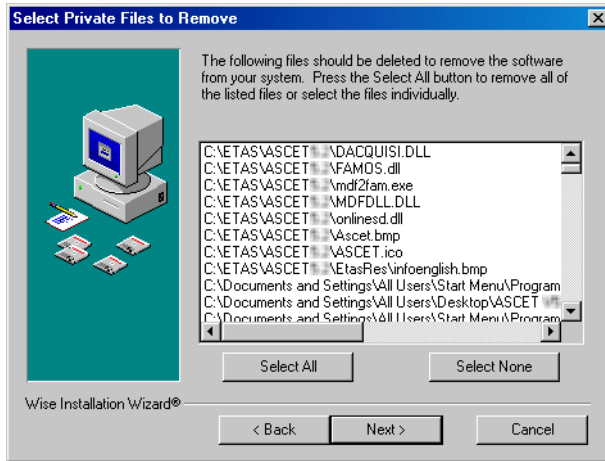
The following window is displayed:



- Select **Custom**.

- Click the **Next** button.

The "Select Private Files to Remove" window opens.



- In the "Select Private Files to Remove" window, select the files you want to remove.
- Click the **Next** button.
- In the "Select Directories to Remove" window, select the directories you want to remove.
- Click the **Next** button.
- In the "Select INI Files to Remove" window, select the *.ini files you want to remove.
- Click the **Next** button.
- In the "Select INI Items to Edit" window, select the *.ini entries you want to edit.
- Click the **Next** button.
- In the "Select Registry Keys to Remove" window, select the registry keys you want to remove.
- Click the **Next** button.
- In the "Select Registry Trees to Remove" window, select the registry folders you want to remove.

- Click the **Next** button.
- In the "Select Registry Keys to Edit" window, select the registry keys to be edited.
- Click the **Next** button.
- In the "Select Sub-Systems to Remove" window, select the sub-systems you want to remove.
- Click the **Next** button.
- In the "Perform Uninstall" window, click the **Finish** button.
- The deinstallation is performed.

You can cancel the custom uninstall process, as well as the automatic deinstallation, using the **Cancel** button.

Note _____

If data has already been deleted, ASCET must be reinstalled.

3 Licensing

Products and Add-Ons of the ASCET product family are subject to license management. In order to work with an ASCET product, after the installation, you need a license file for your computer. Without this file, ASCET products can be installed, but you cannot use them.

3.1 Obtaining Licenses

You can obtain the license file required for licensing either from your system administrator or through a self service portal on the ETAS Internet Site; the URL is given in the entitlement letter. To request the license file you have to enter the activation number which you received from ETAS during the ordering process.

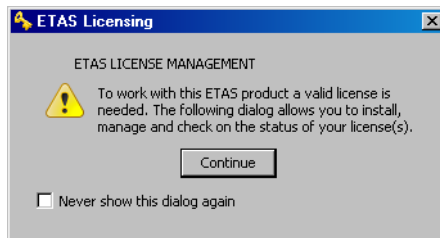
To obtain the license file:

The license is tied to username and workstation. To obtain the information required for the creation of the license file, use the ETAS License Manager.

- In the Windows start menu, select the ETAS folder.
- In the ETAS folder, select **License Management** → **ETAS License Manager** to open the ETAS License Manager.

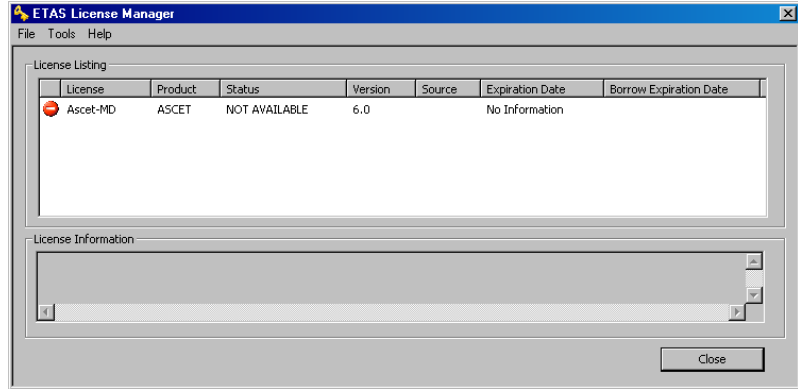
Or

- In the Component Manager, select **Help** → **License Info**.



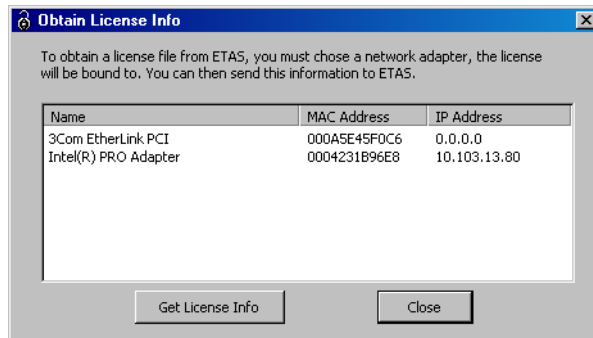
- In the "ETAS Licensing" message window, click **Continue** to open the ETAS License Manager.

The ETAS License Manager contains an entry for each installed ASCET product. The symbol at the beginning of the entry and the "Status" column entry indicate if a valid license has already been obtained. If available, already installed licenses for other ETAS products will be listed as well.



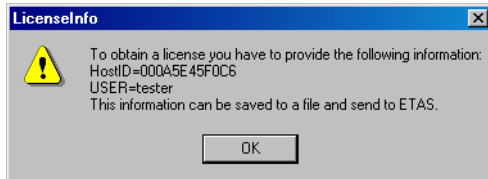
- In the ETAS License Manager, select **Tools** → **Obtain License Info**.

The "Obtain License Info" window opens. It shows the MAC and IP addresses for each network board of your computer.



- Select one of the listed Ethernet adapters and click on **Get License Info**.

The information about your computer required by ETAS to create a license file are collected and displayed in the "License Info" window.



- Click **OK** to store the information in a text file.
- In the file selection dialog window, enter path and name for the text file.
- Click on **Save**.

The file is created and opened in a text editor. Besides your host ID and user name, it contains input lines for your E-mail address, license number, and other specifications, as well as the ETAS contact addresses.

- Close the "Obtain License Info" window.
- Send the completed text file to ETAS.

You find the required license number on the license contract. You have to send a completed text file for each ASCET product you want to use, e.g. ASCET-MD or ASCET-RP.

ETAS will send you the license file with the required license keys for your computer.

Note

*The license file must **not** be edited. Otherwise, it becomes invalid.*

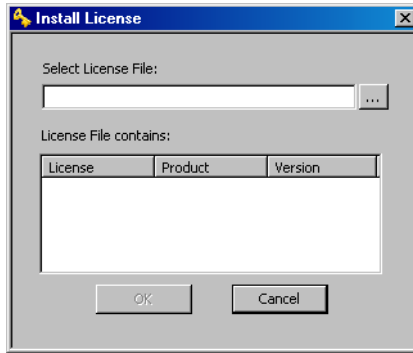
To install the license file:

When you got your license file, proceed as follows to install it.

- Open the ETAS License Manager (cf. page 37).

- In the ETAS License Manager, select **File** → **Add Licensing File**.

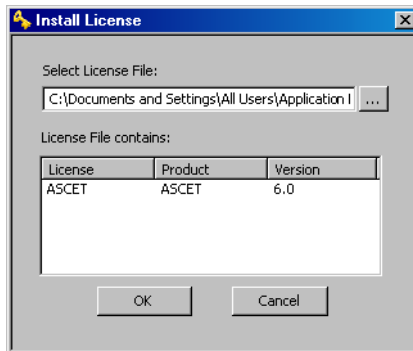
The "Install License" dialog window opens.



- Next to the "Select License File" field click the ... button.

- In the file selection dialog, select the license file for ASCET V6.0 and click **Open**.

The "Install License" dialog window shows information on the selected license.



Note

The "Version" column shows the version number of the license, not the version number of the software.

- Confirm your selection with **OK**.

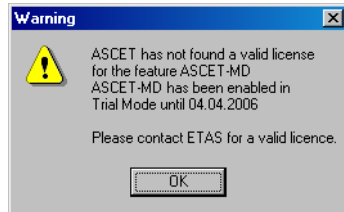
The just added license is now listed in the ETAS License Manager. A green symbol before the entry shows that the license is valid.

Note

If the green symbol is not displayed, there might be a problem with the license file or the license relates to another product. Additional information on the ETAS License Manager can be found in the online help of the ETAS License Manager.

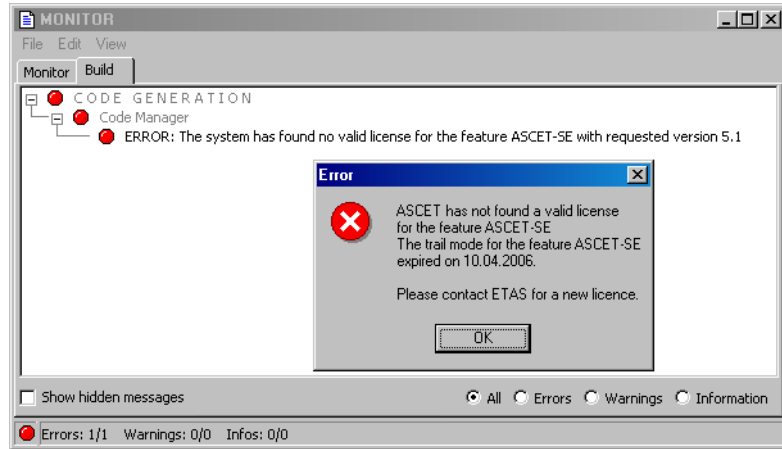
- Click **Close** to close the ETAS License Manager.

If no valid license file is detected, a *trial mode* is activated for ASCET-MD, ASCET-RP or ASCET-SE. That is a limited period of time during which the tool is fully operational, but a license file is searched regularly, and a warning is issued when the search fails.



Add-ons such as INTECRIO-ASC do *not* have a trial mode. Without a valid license file, they do not work.

Once the trial mode is expired, an error message is issued instead of the warning, and the tool does not work until a valid license is found.



3.2 Borrowing Licenses

When you are using a server license, but need a local license (because, e.g., you want to use a notebook in a car), you can *borrow* the server license for a limited time. (You do not need to borrow the license as long as you are connected to the server.) The procedure is explained in the online help of the ETAS License Manager.

4 **ETAS Contact Addresses**

ETAS HQ

ETAS GmbH

Borsigstraße 14
70469 Stuttgart
Germany

Phone: +49 711 89661-0
Fax: +49 711 89661-105
E-mail: sales@etas.de
WWW: www.etasgroup.com

North America

ETAS Inc.

3021 Miller Road
Ann Arbor, MI 48103
USA

Phone: +1 888 ETAS INC
Fax: +1 734 997-9449
E-mail: sales@etas.us
WWW: www.etasgroup.com

Japan

ETAS K.K.

Queen's Tower C-17F
2-3-5, Minatomirai, Nishi-ku
Yokohama 220-6217
Japan

Phone: +81 45 222-0900
Fax: +81 45 222-0956
E-mail: sales@etas.co.jp
WWW: www.etasgroup.com

Great Britain

ETAS Ltd.

Studio 3, Waterside Court
Third Avenue, Centrum 100
Burton-upon-Trent
Staffordshire DE14 2WQ
Great Britain

Phone: +44 1283 54 65 12
Fax: +44 1283 54 87 67
E-mail: sales@etas-uk.net
WWW: www.etasgroup.com

France

ETAS S.A.S.

1, place des Etats-Unis
SILIC 307
94588 Rungis Cedex
France

Phone: +33 1 56 70 00 50
Fax: +33 1 56 70 00 51
E-mail: sales@etas.fr
WWW: www.etasgroup.com

Korea

ETAS Korea Co. Ltd.

4F, 705 Bldg. 70-5
Yangjae-dong, Seocho-gu
Seoul 137-889
Korea

Phone: +82 2 57 47-016
Fax: +82 2 57 47-120
E-mail: sales@etas.co.kr
www.etasgroup.com

China

ETAS (Shanghai) Co., Ltd.

2404 Bank of China Tower
200 Yincheng Road Central
Shanghai 200120
P.R. China

Phone: +86 21 5037 2220
Fax: +86 21 5037 2221
E-mail: sales.cn@etasgroup.com
WWW: www.etasgroup.com

India

ETAS Automotive India Pvt. Ltd.

No. 690, Gold Hill Square
12F Hosur Road, Bommanahalli
Bangalore 560 068
India

Phone: +91 80 4191 2585
Fax: +91 80 4191 2586
E-mail: sales.in@etasgroup.com
WWW: www.etasgroup.com

Index

A

ASCET

- install add-on 18
- install basic system 11
- install license file 39
- path specifications 13
- sample databases 17
- specify functional scope 15
- uninstall 31, 33

B

- Basic installation 23
- borrow license 42

C

- command line 22
 - basic installation 23
 - silent installation 23
 - user-defined *.ini file 24

D

- default directories 30

E

editor

- element 45

- element editor
 - open 45

- ETAS Contact Addresses 43

- ETAS License Manager
 - open 37

I

- install license file 39

Installation

- assign user privilege (Win 2000) 8
- assign user privilege (Win Vista) 9
- assign user privilege (Win XP) 9
- basic 23
- cancel 19
- command line 22
- customize configuration file 25
- customize data for network ~ 26
- install add-on 18
- install license file 39
- integrate modified database 27

Installation

- integrate modified user profile 27
- network installation 24
- obtain license file 37
- overwrite existing version 20
- path specifications 13
- silent 23
- specify ASCET functional scope 15
- start ASCET installation 11
- system requirements 7
- uninstall ASCET 31, 33
- user-defined *.ini file 24
- without administrator privilege 22

L

license

- borrow 42
- not found 41

license file

- install 39
- obtain 37

Licensing 37

- borrow license 42
- no license detected 41
- status 38
- trial mode 41

O

- obtain license file 37

S

- sample databases 17
- Silent installation 23

T

- trial mode 41