

ASCET V6.3
Installation Guide



Copyright

The data in this document may not be altered or amended without special notification from ETAS GmbH. ETAS GmbH undertakes no further obligation in relation to this document. The software described in it can only be used if the customer is in possession of a general license agreement or single license. Using and copying is only allowed in concurrence with the specifications stipulated in the contract.

Under no circumstances may any part of this document be copied, reproduced, transmitted, stored in a retrieval system or translated into another language without the express written permission of ETAS GmbH.

© **Copyright 2014** ETAS GmbH, Stuttgart

The names and designations used in this document are trademarks or brands belonging to the respective owners.

Document EC019906 V6.3 R01 EN - 11.2014

Contents

1	General Information	5
1.1	Safety Advice	5
1.1.1	Correct Use	5
1.1.2	Labeling of Safety Instructions	5
1.1.3	Demands on the Technical State of the Product	5
1.2	About this Manual	6
1.3	Documentation Conventions	6
1.4	Typographic Conventions	7
2	Program Installation	8
2.1	Preparation	8
2.1.1	Contents	8
2.1.2	System Requirements	9
2.1.3	Required User Privileges for Installation and Operation	9
2.2	Installation from Installation Disk	10
2.2.1	Initial Installation – ASCET Base System	11
2.2.2	Installation – ASCET-MD and Other ASCET Products	16
2.2.3	Special Installation Steps and Dialogs	17
2.2.4	Command Line Installation	20
2.3	Network Installation	21
2.3.1	Installing ASCET Products from a Network Drive	22
2.3.2	Customizing the Network Installation	22
2.4	ASCET Directories	29
2.4.1	Default Storage Directories	29
2.4.2	Changing Default Directories	30
2.5	Uninstalling ASCET	30
2.5.1	Automatic Uninstall	31
2.5.2	Custom Uninstall	33

3	Licensing the Software	35
3.1	ETAS License Models	35
3.2	How to Get a License	35
3.3	The License File	36
3.4	Grace Mode	38
3.5	The "Expiration Warning" Window	38
3.6	Borrowing a License	39
4	ETAS Contact Addresses	42
	Index	43

1 General Information

The ASCET product family provides an innovative solution for the functional and software development of modern embedded software systems. ASCET products support every step of the development process with a new approach to modeling, code generation and simulation, thus making higher quality, shorter innovation cycles and cost reductions a reality.

This manual describes the installation of ASCET products. The products themselves are described in the products' manuals or online help files.

1.1 Safety Advice

Please adhere to the Product Liability Disclaimer (ETAS Safety Advice) and to the following safety instructions to avoid injury to yourself and others as well as damage to the device.

1.1.1 Correct Use

ETAS GmbH cannot be made liable for damage which is caused by incorrect use and not adhering to the safety instructions.

1.1.2 Labeling of Safety Instructions

The safety instructions contained in this manual are shown with the standard danger symbol shown below:



The following safety instructions are used. They provide extremely important information. Read this information carefully.



WARNING

Indicates a possible medium-risk danger which could lead to serious or even fatal injuries if not avoided.



CAUTION

Indicates a low-risk danger which could result in minor or less serious injury or damage if not avoided.

NOTICE

Indicates behavior which could result in damage to property.

1.1.3 Demands on the Technical State of the Product

The following special requirements are made to ensure safe operation:

- Take all information on environmental conditions into consideration before setup and operation (see the documentation of your computer, hardware, etc.).



WARNING

Wrongly initialized NVRAM variables can lead to unpredictable behavior of a vehicle or a test bench, and thus to safety-critical situations.

ASCET projects that use the NVRAM possibilities of ASCET-RP targets expect a **user-defined** INIT process that checks whether all NV variables are valid for the current project, both individually and in combination with other NV variables. If this is not the case, all NV variables have to be initialized with their (reasonable) default values.

Due to the NVRAM saving concept, this is **absolutely necessary** when projects are used in environments where any harm to people and equipment can happen when unsuitable initialization values are used (e.g. in-vehicle-use or at test benches).

Further safety advice is given in the ASCET V6.3 safety manual (`ASCET_SafetyManual.pdf`) available at ETAS upon request.

1.2 About this Manual

The ASCET installation guide contains the following chapters:

- **"General Information"** (this chapter)
This chapter provides some basic information regarding this manual.
- **"Program Installation"**
This chapter targets both all users who install, maintain or uninstall ASCET on a PC or a network as well as system administrators who provide ASCET on a file server so that the program can be installed via the network. It contains important information on the scope of delivery, hardware and software requirements for stand-alone and network installations and the preparation required for installation. The chapter also describes the procedures used to install and uninstall ASCET.
- **"Licensing the Software"**
This chapter contains various licensing information, e.g. how to obtain a license file or how to borrow a license.
- **"ETAS Contact Addresses"**
Contact information of the various ETAS subsidiaries.

1.3 Documentation Conventions

All actions to be performed by the user are presented in a task-oriented format as illustrated in the following example. A *task* in this manual is a sequence of actions that have to be performed in order to achieve a certain goal. The title of a task description usually introduces the result of the actions, e.g. "To create a

new component", or "To rename an element". Task descriptions often contain illustrations of the particular ASCET window or dialog box the task relates to.

To achieve a goal:

Any preliminary information...

- Step 1
Explanations are given underneath an action.
- Step 2
Any explanation for Step 2...
- Step 3
Any explanation for Step 3...

Any concluding remarks...

1.4 Typographic Conventions

The following typographic conventions are used in this booklet:

Select File → Open .	Menu options and buttons are shown in blue boldface .
Click OK .	
Press <ENTER>.	Keyboard commands are shown in angled brackets and CAPITALS.
The "Open File" dialog window opens.	Names of program windows, dialog windows, fields, etc. are shown in quotation marks.
Select the file <code>setup.exe</code> .	Text in drop-down lists on the screen, program code, path- and file names are shown in the <code>Courier</code> font.
A <i>distribution</i> is always a one-dimensional table of sample points.	General emphasis and new terms are set in <i>italics</i> .
The OSEK group (see http://www.osekvd.org/) has developed certain standards.	Links to internet documents are set in <u>blue, underlined</u> font.

Important notes for the users are presented as follows:

Tip

Important note for users.

2 Program Installation

The chapter entitled "Program Installation" targets both all users who install ASCET on a PC or a network, or maintain and uninstall the program as well as system administrators who provide ASCET on a file server so that the program can be installed via the network. It contains important information on the scope of delivery, hardware and software requirements for stand-alone and network installations and the preparation required for installation. The chapter also describes the procedures used to install and uninstall ASCET.

2.1 Preparation

Check the items supplied for completeness and your computer for compliance with the system requirements. Depending on the operating system used and the network connection, you have to make sure that you have the user privileges required.

2.1.1 Contents

ASCET is supplied with the following:

- ASCET installation disk
 - ASCET program files
 - ASCET manuals and ETAS hardware documentation in PDF format (Acrobat Reader)
 - Manual "FLEXnet Licensing End User Guide" in PDF format

Furthermore, you require a valid license for the use of ASCET products. You can obtain the license files required for licensing either from your system administrator or through a self service portal on the ETAS Internet Site; the URL is given in the entitlement letter. To request the license file you have to enter the activation number which you received from ETAS during the ordering process. See also chapter 3 "Licensing the Software" on page 35.

2.1.2 System Requirements

The following system requirements have to be met:

	Minimum Required	Recommended
Operating System	<ul style="list-style-type: none"> Windows® 8.1 (x64) Windows® 7 (x86 or x64) Windows® Vista (x86) + SP1 	<ul style="list-style-type: none"> Windows® 7 (x64)
Hardware	<ul style="list-style-type: none"> 1.5 GHz Pentium PC 1 GB RAM DVD ROM drive network adapter Graphics with resolution of at least 1024 x 768, 32 MB, 16 bit color, DirectX 7 	<ul style="list-style-type: none"> 2 GHz dual-core o. equivalent 4 GB RAM DVD ROM drive network adapter 2nd network adapter if using ASCET-RP Graphics with a resolution of 1600 x 1200, 128 MB RAM, 32 bit color, DirectX 7 or higher, hardware acceleration
Software^a	<ul style="list-style-type: none"> .NET Framework 3.5.1 .NET Framework 4 	<ul style="list-style-type: none"> .NET Framework 3.5.1 .NET Framework 4
Free disk space	<ul style="list-style-type: none"> 3 GB (not including space for program data) 	<ul style="list-style-type: none"> > 4 GB (not including space for program data)

a. See also section ".NET versions" on page 14.

2.1.3 Required User Privileges for Installation and Operation

User privileges required for installation:

In order to install ASCET on a PC, you need the user privileges of an administrator. Please contact your system administrator, if necessary.

User privileges required for operation:

In order to operate ASCET, each user must receive the privilege called "Increase Scheduling Priority" from the administrator. This can be set using the User Manager.

Tip

You need administrator rights to perform the settings described below.

Recommendation: Assign the privilege "Increase Scheduling Priority" to the local "User" group. To do so, proceed as follows:

To assign the User Privilege "Increase Scheduling Priority":

- Windows Vista:
 - From the Start Menu, select **Control Panel** → **System and Maintenance** → **Administrative Tools** → **Local Security Policy**.

- Windows 7:
 - From the Start Menu, select **Control Panel** → **Administrative Tools** → **Local Security Policy**.
- Under **Local Policies** → **User Rights Assignment** activate **Increase Scheduling Priority** by double-clicking on it.
The "Increase scheduling priority Properties" window is displayed.
- Click on the **Add User or Group** button.
The "Select Users, Computers or Groups" window is displayed.
- Click on the **Locations** button.
The "Locations" window is displayed.
- Select the local workstation and close the "Locations" window by clicking **OK**.
The "Select Users, Computers or Groups" window is renamed to "Select Users or Groups".
- In the "Select Users or Groups" window, click on the **Advanced** button to enable the automatic search feature.
Another window named "Select Users or Groups" opens.
- Click on the **Find now** button to display the list of users registered for the local workstation.
- In the "Name (RDN)" column, choose the names of the users or groups to whom you want to assign the privilege to increase the scheduling priority.
- Confirm by clicking the **OK** button.
- Close the first "Select Users or Groups" window by clicking **OK**.
- Close the "Increase scheduling priority Properties" window by clicking **OK**.
- Exit the local security policy settings.

2.2 Installation from Installation Disk

To install one of the add-on products (e.g., ASCET-MD, ASCET-RP, ASCET-SE, ASCET-SCM), you have to install the ASCET base system first. In addition, ASCET-SCM requires the installation of ASCET-MD, ASCET-RP or ASCET-SE.

Installation is performed in the same way if you install ASCET from the CD or the network drive. During installation, log files are written, which can later be used to verify the installation (see the ASCET online help for details).

Section 2.2.1 describes the installation of the base system in detail. The installation of add-on products is briefly described in section 2.2.2; if additional information is required, see the respective manuals or release notes.

Special issues to be observed during the installation (e.g., "To cancel the installation:" or "To overwrite an existing program version:") are described in section 2.2.3. Section 2.2.4 contains information on command-line installation.

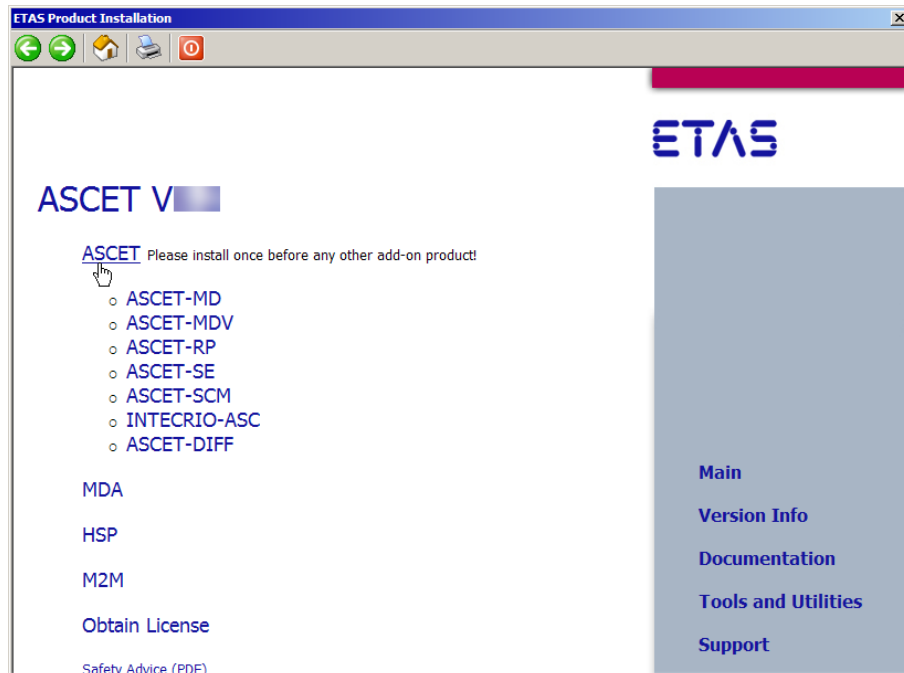
2.2.1 Initial Installation – ASCET Base System

To start the ASCET installation:

Tip

You can install ASCET only on a supported operating system (see section 2.1.2 for a list). If you try to install ASCET on an unsupported operating system, an error message opens and the installation aborts.

- Insert the installation disk into the respective drive of your computer.
- If the installation does not start automatically, double-click on `start.exe`.
An installation dialog opens.
- Click on the [Main](#) link to go to the installation page.



- Click on the [ASCET](#) link to install the ASCET base system.

Tip

You must install the ASCET base system before you can install ASCET-MD or any other ASCET product except ASCET-DIFF.

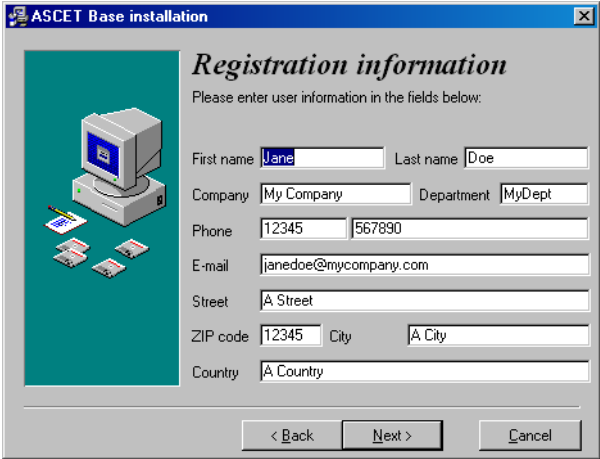
The installation starts.

License Agreement:

- In the "EULA" window, activate the **Accept** option to accept the license agreement.
- Click **OK**.
- Follow the instructions displayed on the screen.
The **Next** button accepts your settings and proceeds to the next window, the **Back** button returns to the previous window, and **Cancel** aborts the installation.

To register ASCET:

- In the registration window, enter your personal information.



ASCET Base installation

Registration information

Please enter user information in the fields below:

First name Last name

Company Department

Phone

E-mail

Street

ZIP code City

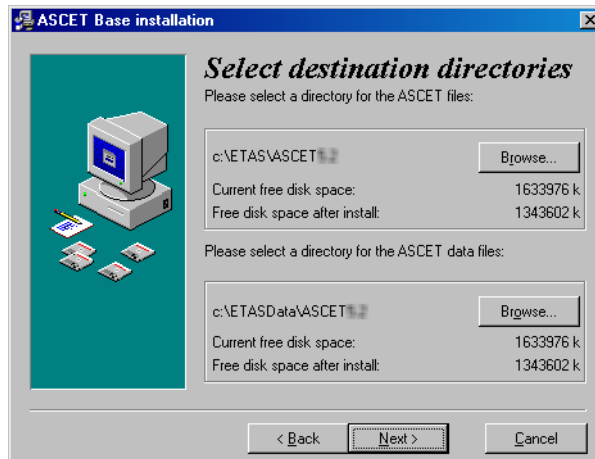
Country

< Back Next > Cancel

- Click on the **Next** button.

To specify ASCET paths:

When you have registered ASCET, you are prompted to specify target directories for program files and data.



Program *files* and program *data* are stored in different directories. When you uninstall or update the program later, only the program files will be deleted or overwritten. The program data will continue to be available to you. The program data includes the following:

- Databases
- User profiles

Tip

You can install ASCET in a directory with blanks in its path. Before you do so, however, make sure that all external tools used with ASCET support path names with blanks, too.

When you are installing ASCET on Windows 7, make sure that you select an installation directory that offers write access during ASCET operation; ASCET writes to files in the installation directory.

It is recommended that you do not use the Program Files directory as installation directory.

- If you want to change the default directories, click on the **Browse** button.
- In the path selection dialog window, select the desired directory.
If you specify a directory which does not exist, the installation routine will automatically create it.
- Click on the **Next** button.

To specify the ASCET folder in the Start menu:



- Accept the default folder name
- or
- specify a different folder name.
- Click on the **Next** button.

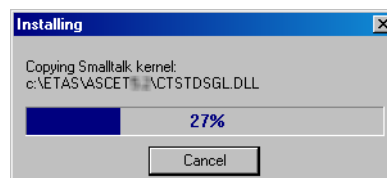
Installing ASCET:

The "Ready to install" window lists the directories for log files and temporary files. You cannot change these paths.

Tip

With the next step, you start the installation.

- In the "Ready to install" window, click **Next** to start the installation.
The program files will be copied. A bar chart indicates the copy progress.



If necessary, the ETAS license manager is installed with the program.

Finally the "Installation complete" window appears.

- In the "Installation complete" window, click on the **Finish** button to finish the installation.

.NET versions: .NET 3.5 and .NET 4 are required for ASCET. Depending on your operating system, the following happens during installation:

- **Windows Vista**

The ASCET installer will try to install .NET 3.5 and .NET 4.0.

Tip

If the installation fails, .NET 3.5 and .NET 4.0 must be installed manually and the ASCET installation must be started again.

- **Windows 7**

By default, .NET 3.5 comes with the operating system. If neither .NET 4.0 nor .NET 4.5.x is installed, the ASCET installer will try to install .NET 4.0.

Tip

If the installation fails, .NET 4.0 or .NET 4.5.x must be installed manually and the ASCET installation must be started again.

- **Windows 8, Windows 8.1**

.NET 4.5.x is installed by default. If .NET 3.5 is not installed, the ASCET installer will try to install .NET 3.5.

Tip

If the installation fails, .NET 3.5 must be installed manually and the ASCET installation must be started again.

After the installation is complete, you will find the folder name you specified with the following entries in the Start menu:

- **ASCET Help**
Opens the ASCET online help.
- **ASCET Uninstall**
Starts the uninstall routine (see section 2.5).
- **ASCET V6.3**
Starts the ASCET program.
- **AS Editor**
Starts the AS Editor (see ASCET online help for more information).
- **Online manuals**
If you installed the online manuals, you can here open the ETAS\ETASManuals directory. Here, the manuals are stored in several subdirectories.
- **ReadMe**
Provides current information on ASCET V6.3.

The ETAS License Manager has a separate folder **License Management** in the ETAS program group of the Start menu. This folder contains a single entry, **ETAS License Manager**.

Several sample files are located in the `export` directory of your ASCET installation; they are available as `*.exp` or `*.axl` files. They can be imported in any ASCET database (both formats) or workspace (`*.axl` only).

- `ETAS_System_Library.*` and `ETAS_System_CT_Library.*` – ETAS system libraries (containing various basic modelling blocks such as the PT1 element or other basic filter elements, integrators, etc.)
- `ETAS_MBFS_Library.*` – ETAS system library containing a subset of the blocks defined by the ASAM AE MBFS standard¹
- `Tutorial.*` – ETAS tutorial

¹. available at <http://www.asam.net>

- Tutorial AUTOSAR UG.* – AUTOSAR tutorial

Tip

ASCET cannot be started until ASCET-MD, ASCET-RP, or ASCET-SE is installed, too.

2.2.2 Installation – ASCET-MD and Other ASCET Products

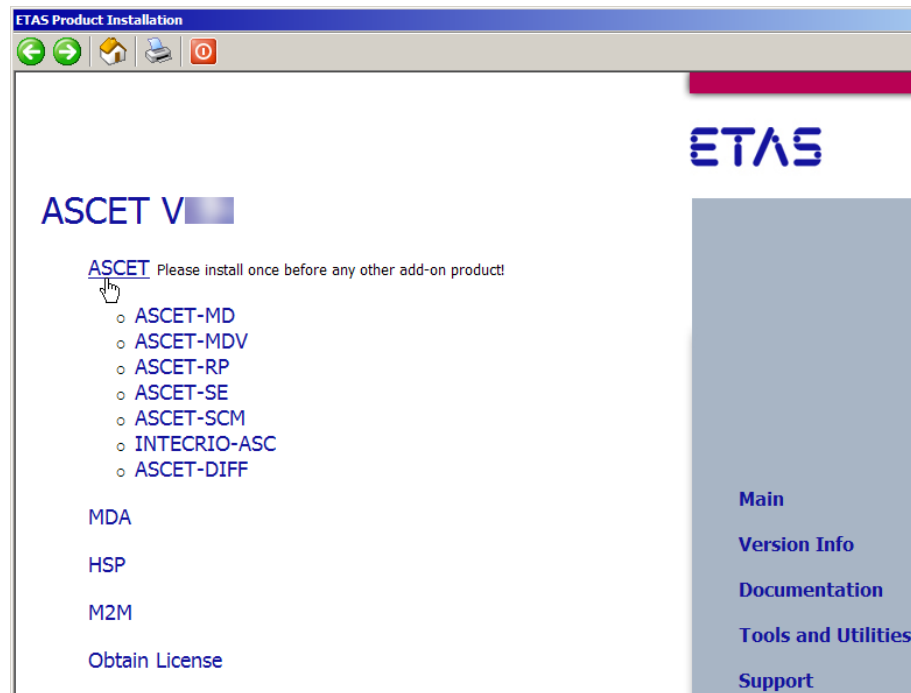
After installing the basic system, you can install ASCET-MD or other ASCET add-on products.

To install ASCET add-ons:

Tip

You can install only ASCET add-ons that match an ASCET version already present on your computer. If you try to install an ASCET add-on onto a non-matching ASCET version, an error message opens and the installation aborts.

- Re-open the installation dialog.



- Click on the [ASCET-MD](#) link (or the link of another ASCET product you want to install).

Tip

You must install the ASCET base system before you can install ASCET-MD or any other ASCET product except ASCET-DIFF. ASCET-SCM can only be used if ASCET-MD, ASCET-SE or ASCET-RP is installed, too.

- Follow the instructions on the installation dialogs.
The selected product is installed.

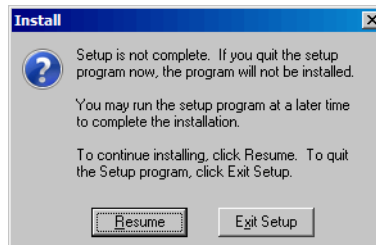
ASCET-RP adds the **ETAS Network settings** entry to the ETAS program group of the Start menu. This entry starts the assistant for the configuration of the ETAS network.

2.2.3 Special Installation Steps and Dialogs

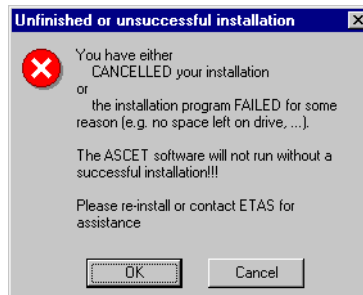
To cancel the installation:

Before you click **Next** in the "Ready for installation" window, you can still cancel the installation prematurely. Proceed as follows:

- Click the **Cancel** button in the current window.



- Click **Resume** to return to the previous dialog box.
- Click the **Exit Setup** button to quit the setup program.

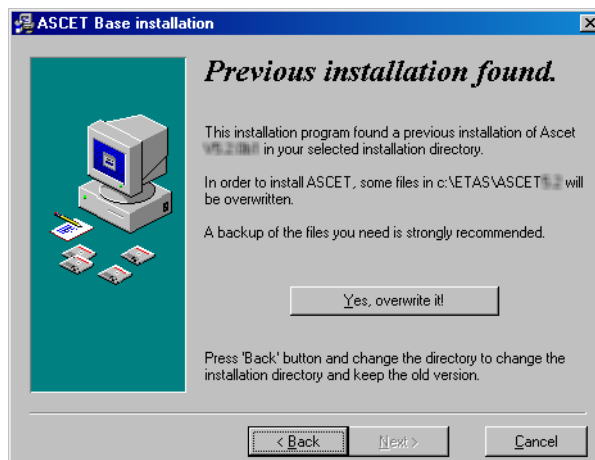


- Confirm that you want to cancel the installation by clicking **OK**.

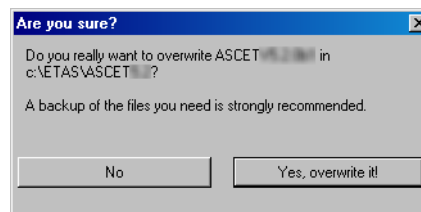
To overwrite an existing program version:

If an older version of the software to be installed is found on the target workstation, or if an entirely different software exists in the selected installation directory, a corresponding dialog box appears. The following sample dialog box would appear during ASCET installation if an older version would have already

been installed on the target workstation.



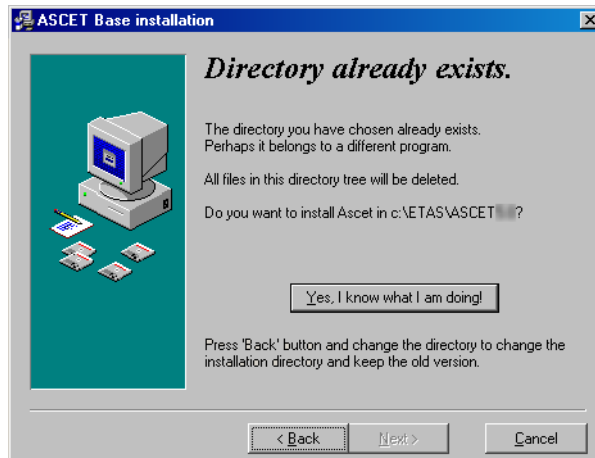
- Read the instructions carefully.
You are informed that an older installation has been found, and that files will be overwritten when you continue.
- To select a different directory, click the **Back** button.
- If you want to overwrite the existing files, click the **Yes, overwrite it** button.



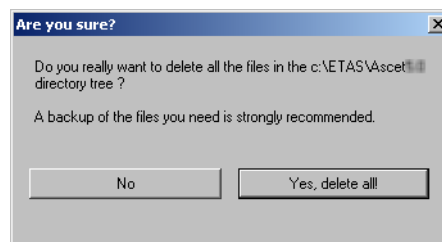
- Acknowledge the confirmation prompt by clicking **Yes, overwrite it!**
Click **No** to return to the previous window.

To overwrite existing directories:

If the directories specified during the installation already exist, and a complete ASCET installation does not exist on the target workstation, the following dialog window appears. This case occurs, e.g., if a previous installation process has been canceled.



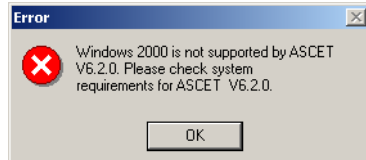
- Read the instructions carefully.
You are informed that the directory you selected already exists.
- To select a different directory, click the **Back** button.
- If you want to overwrite the existing directories, click the **Yes, overwrite it** button.



- Acknowledge the confirmation prompt by clicking **Yes, delete all!**
ASCET is installed; existing files are deleted.
Click **No** to return to the previous window.

Installation on an unsupported OS:

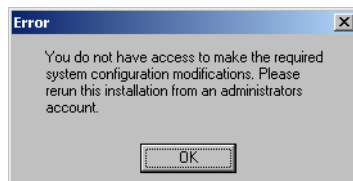
This message box appears if you try to install ASCET on an unsupported operating system.



- Confirm by clicking **OK**.
This installation is terminated.
- Restart the installation after you have received a supported operating system.

Installation without administrator privileges:

Administrator privileges are prerequisites for the installation of ASCET. The following message box appears if the user name under which you logged on to Windows has no administrator privileges.



- Confirm by clicking **OK**.
This installation is terminated.
- Please contact your system administrator.
- Try the installation again after you have received the required privileges.

2.2.4 Command Line Installation

When you start the installation from a command line, you can use several command line arguments to customize the installation.

/? or **/h**

Opens a window with the valid command line arguments.

/silent or **/s**

Tip

/silent must be the first command line argument. If other arguments precede it, /silent has no effect.

Silent installation mode. With this installation mode, no dialog windows requiring user information open. Default values, or values from the `install.ini` file, are used for all information normally requested in installation windows. Error messages are hidden, too.

Silent installation is started as hidden process. An icon appears in the system tray during installation, but you cannot access the process.

A log file `silent.log` is created in the ASCET installation directory. It uses the `*.ini` file format with a section for each ASCET product installed in silent mode. As long as the installation is running, the respective section contains a line

```
install=in progress
```

After a successful installation, that line is changed to

```
install=successfully finished
```

If a reboot is required after installation, the reboot is performed automatically, unless you prevent it by an entry¹ in `install.ini`. The following line is added to the respective section in any case:

```
need_reboot=yes
```

/basic

Basic installation mode. In this installation mode, no dialog windows requiring user information open, except the EULA window. The basic installation mode works as the silent installation mode, except that animations, the progress bar and error messages are shown and no log file similar to `silent.log` is created.

Tip

For some ASCET products, environment variables can be defined, or preferences must be set in the `install.ini` file to control silent or basic installation. See the respective documentation for details.

/ini="<MyPath>\<IniFileName>.ini"

By default, the `install.ini` file in the installation file directory is used for installation. It may be reasonable, however, to use different installation `*.ini` files for different installations, e.g. if several customers install ASCET products from one central share.

If an installation `*.ini` file is located outside the installation file directory, it is accessed via `/ini="<MyPath>\<IniFileName>.ini"`.

If an installation `*.ini` file is located inside the installation file directory, it is accessed via `/ini=".\<IniFileName>.ini"`.

2.3 Network Installation

In addition to the installation from the disk, you can also install ASCET from a network drive on the PC.

The network installation provides the benefit that you can adjust data even before the actual installation on the workstation takes place (see section 2.3.2).

¹. `[SilentInstallation]`
`;prevents a silent installation from rebooting when`
`;set to "Suppress"`
`Restart=Suppres`

2.3.1 Installing ASCET Products from a Network Drive

The sequence of dialogs when installing from a network drive is the same as when installing from an installation disk (see "Installation from Installation Disk" on page 10).

To provide data on the network server:

To provide data in the network, you have to copy the installation files from the installation disk to the desired network drive.

- Create a source directory on the desired network drive.
- Copy all data from the installation disk to the source directory.
- If desired, customize the installation; see also section 2.3.2

To start the installation:

- Search for the *.exe file (i.e. ASCET.exe, ASCET-MD.exe, etc.) of the product you want to install.
- Double-click the file.
- Follow the instructions in the installation dialogs.

2.3.2 Customizing the Network Installation

You can customize ASCET (modifying specific default settings) even before the user installs ASCET on his workstation.

You have the following customizing options for the network installation:

- You can customize the installation dialogs, e.g., modify the default settings for directories, etc. (see "Customizing Installation Dialogs" on page 23).
- When one installation is finished, you can perform up to 50 additional installations (see "Concatenating Installations" on page 23).
- You can specify the storage location for the network installation log file (see "Logging the Installation Information" on page 24).
- You can define the way in which ASCET accesses the required licenses (see "Setting the Licensing Behavior" on page 25).
- You can perform the ASCET installation fully automatically and without user intervention invisibly in the background (see "Automatic Installation" on page 27).
- You can overwrite the files provided in the product data directory (default setting: [drive] : \ETASdata\ASCET6.3\...) with your customized files and/or add files to the existing directories (see "Customizing ASCET Files" on page 27).

Customizing Installation Dialogs

For the network installation in large enterprises, it is often necessary to customize certain default settings during the installation to fit internal standards and requirements. This is possible by means of the `install.ini` configuration file. This file is located in the installation directory.

The following example will show you how to modify the default settings.

To customize the configuration file:

- Open the `install.ini` file with a text editor.
The following is a typical example of an entry in this INI file:

```

;Sets the main directory of ASCET
;MainDir=c:\etas\ASCET6.3

```
- To modify the default setting, delete ";" (comment) on the line with the `MainDir` keyword.
- Change the path to, e.g.,
`H:\programs\etas\ASCET6.3`.
The entry should now look like this:

```

;Sets the main directory of ASCET
MainDir=H:\programs\etas\ASCET6.3

```
- In the same way, modify all other entries in `install.ini` as desired.
- Save your changes and then close the editor.

When you now start the installation with `Ascet.exe`, the dialog boxes will show the new settings as defaults.

Tip

The modified path settings affect the functions described below.

Concatenating Installations

Using the `AutoInstallXX` parameter in `install.ini`, it is possible to access up to 50 additional installations after finishing one installation.

To concatenate installations:

- Open the `install.ini` file with a text editor.
The following entries pertain to concatenating installations:

```

;AutoInstall01=..\Installation2\Install.EXE
;AutoInstall02=

```
- To enable this function, delete the ";" (Comment) that is on the same line as the keyword `AutoInstall01`.

- Change the path to, e.g.,
`..\..\HTMLInstall\setup.exe`.

Be sure to enter a specific path that is different from the ASCET installation file. Here, "`..\`" means one directory level upward.

```
AutoInstall101=..\..\HTMLInstall\setup.exe
```

Repeat these steps, if necessary, for additional installation files (max. `AutoInstall10`).

Logging the Installation Information

When installing from a network drive, the information entered in the registration dialog is saved in a file (`ASCET[_*].usr`). It is used for your own reference only. By default, the file is stored on the source drive from which the installation was started, under a dedicated directory named `User` (e.g., `<source drive>:\User\ASCET usr`).

As already mentioned during the registration for network installation, you can change the storage location specified in `install.ini`. You can also disable the log function.

Tip

Make sure that all users have write-access to the log directory, i.e., the source directory or the directory you specified in `install.ini` (see below).

To specify the logging of registration information:

- Open the `install.ini` file with a text editor.
- Go to the `[Network-Preferences]` section.
- Use the `NetUserLogging` option to enable (`true`) or disable (`false`) the logging of registration information.

```
NetUserLogging=true
```

or

```
NetUserLogging=false
```

- Use the following entry to specify the logging directory:

```
;NetUserLogPath=i:\User
```

- To modify the default setting, delete "`;`" (Comment) on the line with the `NetUserLogPath` keyword and change the path to, e.g., `x:\UserLog`.

```
NetUserLogPath=x:\UserLog
```

- Edit the `NetUserLogPrefix` and `NetUserLogSuffix` options to specify a prefix or suffix to the log file name.
- Save your changes.

If the installation files are on a local hard disk, the installation process is not logged by default. If you also want to log the installation process for local installation, delete the comment character as described above and specify the desired path.

Setting the Licensing Behavior

In the [Licensing] section of `install.ini`, you can define the way in which ASCET and other ETAS software programs access the required licenses.

To define the access to the required licenses:

- Open the `install.ini` file with a text editor.
- Go to the [Licensing] section and modify the settings as desired.
The parameters that can be included in this section, and their settings are described below.
- Save your changes.

The following parameters may be used:

- `LicenseFileName`
Defines the absolute path to the location of the license file which is to be added.
- `LicensesToBorrow`
You can use this setting if licenses can be borrowed from a license server. To enable the borrow mechanism, you must enter the name of the product or features license (e.g. ASCET). If you enter more than one license, the license names must be separated by blanks.

The ASCET product family uses the following licenses:

License name	functionality
ASCET-MD	ASCET Modeling and Design
ASCET-RP	ASCET Rapid Prototyping
ASCET-SE	ASCET Software Engineering
ASCET-DIFF	ASCET Difference Viewer
ASCET-VIEW	ASCET Model Viewer (part of ASCET-DIFF)
ASCET-SCM	ASCET Software Configuration Management

- `BorrowExpiryMode`
Defines the way in which the expiration of the borrow status is given. Possible values are:
 - `Date`
If the `BorrowExpiryMode` is set to `Date`, the borrow period will expire at a certain date which is specified under `BorrowExpiryDate`.

- Interval

If the `BorrowExpiryMode` is set to `Interval`, the borrow period will expire after a certain number of days which is specified under `BorrowExpiryInterval`.

- `BorrowExpiryDate`

If the `BorrowExpiryMode` is set to `Date`, this parameter specifies the date when the borrow period expires. The format is `yyyy-mm-dd`.

- `BorrowExpiryInterval`

If the `BorrowExpiryMode` is set to `Interval`, this parameter specifies the length of the borrow period in days.

- `ExecuteBorrowAutomaticExtensionInterval`

Defines at what point of time the borrow period will be automatically extended. This parameter specifies the number of days before the expiration of the current borrow period. When this time is reached, the borrow period is automatically extended to the interval specified under `BorrowAutomaticExtensionInterval`.

- `BorrowAutomaticExtensionInterval`

This parameter specifies the borrow interval in days that is applied when an automatic extension of the borrow period is executed (as defined under `ExecuteBorrowAutomaticExtensionInterval`).

- `ImmediateBorrow`

You can define that a license is automatically borrowed. Possible values are:

- `True`

The license is borrowed automatically at installation time.

- `False`

The license will be borrowed at the first time when the program connects to the license server.

- `CustomLicenseFolder`

Due to the fact that the default location for added license files (e.g., `C:\Documents and Settings\All Users\Application Data\ETAS\FlexNet for Windows XP`) is only writable for users with admin rights, a different path for the license file folder may be specified with this parameter.

The following example defines that borrowing is enabled for ASCET. The license will be borrowed when ASCET will be started for the first time; by default the license expires after 100 days.

```
[Licensing]
LicenseFileName = 'd:\licenses\MyLicense.lic'
LicensesToBorrow = 'ASCET-MD'
BorrowExpiryMode = 'Interval'
BorrowExpiryInterval = '100'
ImmediateBorrow = 'false'
```

Automatic Installation

By calling `Ascet.exe /s` you can execute the ASCET installation fully automatically and transparently in the background, i.e., without any required user interaction. This will select the currently valid default settings. You can configure these settings in the `install.ini` file (see "Customizing Installation Dialogs" on page 23).

If you as the system administrator create a batch file containing the `ascet.exe /s` command, and configure the required settings in `install.ini`, the users can run the installation process themselves by executing this batch file without the need to enter any further information.

As this type of installation does not display any dialog boxes, you may want to provide some mechanism to inform the user when the installation has finished.

See also section 2.2.4 "Command Line Installation" on page 20.

Customizing ASCET Files

During installation, the customization feature described below allows you to control the installation routine to the extent that your customized files will overwrite certain default files, or that other files will be included in the installation.

Doing this allows you to integrate your customized databases, user profiles, and window templates in the installation routine.

Create a subdirectory named `InstData\...` in the source directory and copy your customized files into it while maintaining the proper directory structures.

To create your customized files, install ASCET on a test computer, and use this to create the files.

After the default installation of ASCET, the `ETASData\ASCET6.3\...` directory contains various subdirectories with files that determine the ASCET default settings which you can customize. These include the following subdirectories:

- `Database\DB\`
The `DB` subdirectory contains the default database. Here you can, e.g., create another demo database under `Database\DemoDB\`.
- `User\[user name]`, depending on the windows login
The `[user name]` subdirectory contains the default user profile. All configurable options are stored in this subdirectory.

Customizing Data for Network Installation:

- [Install ASCET on your PC.](#)
- [Start ASCET.](#)
- [Modify the user profile.](#)
- [Modify the database or add a new one.](#)
- [Exit ASCET.](#)

You have finished your customization and now want to integrate these files in the installation routine. You have two choices.

- Overwrite existing files that have the same name with your customized files. To be able to do this, you must create a folder named `InstData\overwrite\` in the source directory.

- Rename your customized files and add them to the existing files. With that, there are no files with the same name that could be overwritten. To rename your customized files, you must create a folder named `InstData\add-only\` in the source directory.

To include your customized files in the installation routine, be sure to copy also the parent directories. Note that the `ETASData\ASCET6.3\` directory level must be the same as `InstData\overwrite\` or `InstData\add-only\`.

Examples:

```
InstData\overwrite\user\userdefaultSettings.xml
```

```
InstData\add-only\database\additionalDB\
```

To integrate a modified user profile:

- Copy your customized file `ETASData\ASCET6.3\user\[user name]\userSettings.xml` into the `InstData\overwrite\user\` subdirectory.
- Rename `userSettings.xml` to `userdefaultSettings.xml`.
This ensures that this initialization file will be used after the installation for each new user.

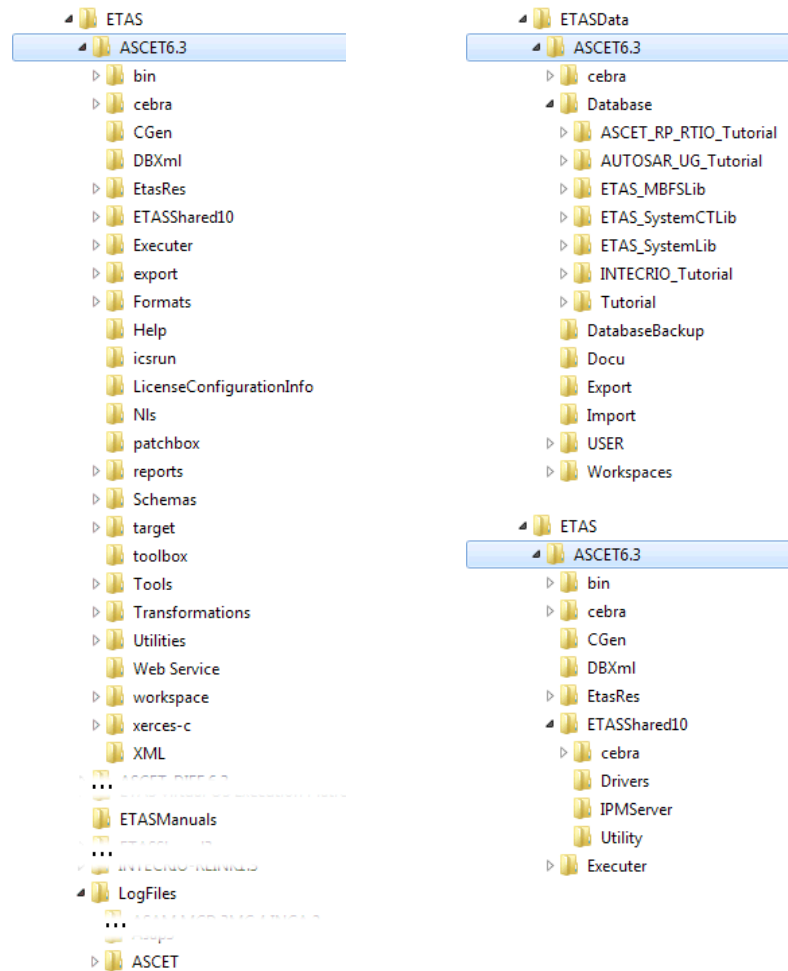
To integrate a modified database:

- Copy your customized database, i.e., the `\database\DB\` subdirectory into the `InstData\add-only\...` subdirectory.
- Rename the `db` directory as desired, otherwise the database will not be copied.
Of course, you could also overwrite the `db` database by using the `InstData\overwrite\` directory.

When starting the installation routine with `ascet.exe`, your customized files will replace the default files, and/or your new files will be added in the corresponding directories.

2.4 ASCET Directories

During ASCET installation, the following directory structure is created on the installation disk (unless you modify the path settings):



2.4.1 Default Storage Directories

- Databases
ETASData\ASCET6.3\Database
- Workspaces
ETASData\ASCET6.3\Workspaces
- Export
ETASData\ASCET6.3\Export
- Import
ETASData\ASCET6.3\Export
- generated code
ETAS\ASCET6.3\CGen
- automatically generated documentation
ETASData\ASCET6.3\Docu (created during documentation generation)

2.4.2 Changing Default Directories

You can use the "Options" dialog window to change the default storage directories. To do so, proceed as follows:

To change the default storage directories:

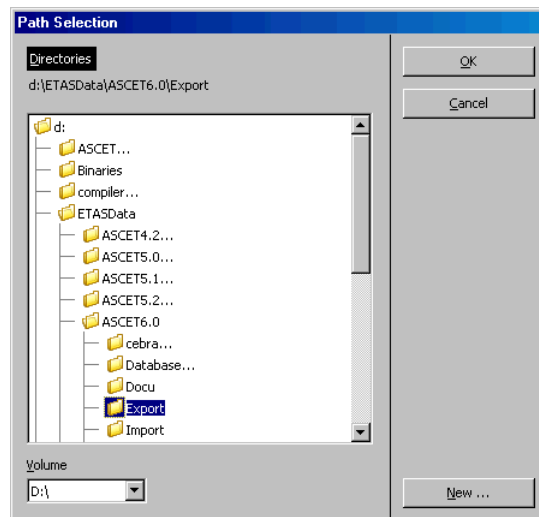
- In the Component Manager, select the menu option **Tools** → **Options**.

The ASCET options window opens. You can change the database, workspace, import, export, and documentation paths in the "Environment\Paths" node, and the code generation path in the "Build\Paths" node.



- Click on the button next to the path you want to change.

The "Path selection" window opens.



- Specify the directory you want to use as default for the selected option.
- Click **OK**.
The selected directory is displayed in the "Options" window.
- Repeat these steps for each option you want to change.
- When you are ready, click **OK** in the "Options" window to accept the changes, or click **Cancel** to discard the changes.

2.5 Uninstalling ASCET

When ASCET is uninstalled, *all* matching add-ons on the computer are uninstalled, too. You can uninstall only the entire ASCET product family, not separate products as ASCET-MD, ASCET-SE or ASCET-RP.

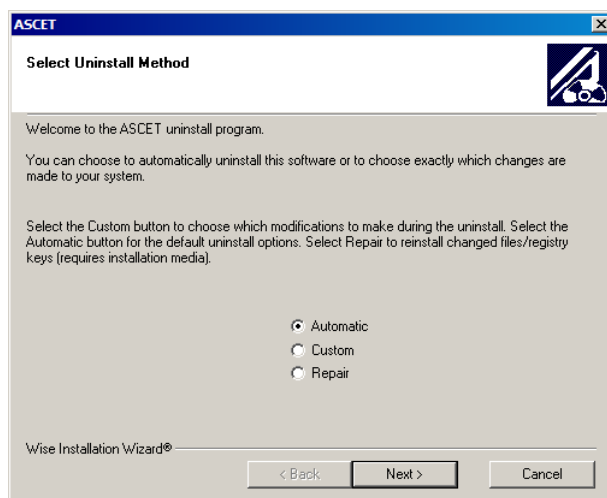
There are several ways to start the ASCET uninstall process:

1. Via **Add/Remove Programs** or **Programs and Features** in the Windows Control Panel.
2. Via **Uninstall** from the **ASCET6.3** program group in the Windows start menu.

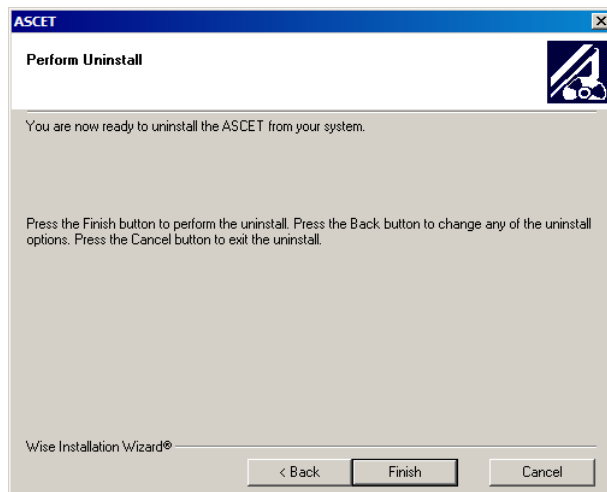
2.5.1 Automatic Uninstall

To uninstall ASCET (automatically):

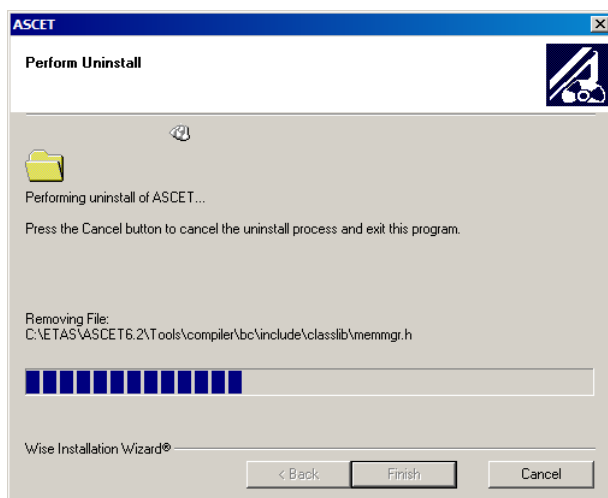
- Start the uninstall procedure.
The following window is displayed:



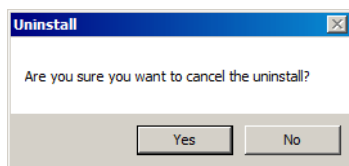
- Select **Automatic**.
- Click **Next**.



- Click **Finish** to execute the uninstall process.



You can cancel the uninstall process. If you click the **Cancel** button, the following window appears:



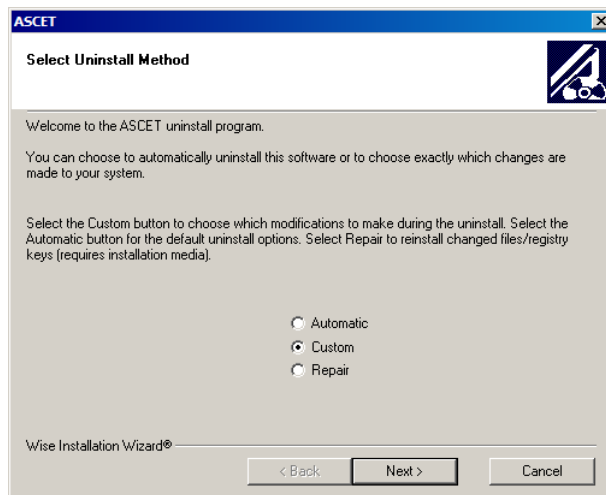
Tip

If data has already been deleted, ASCET must be reinstalled.

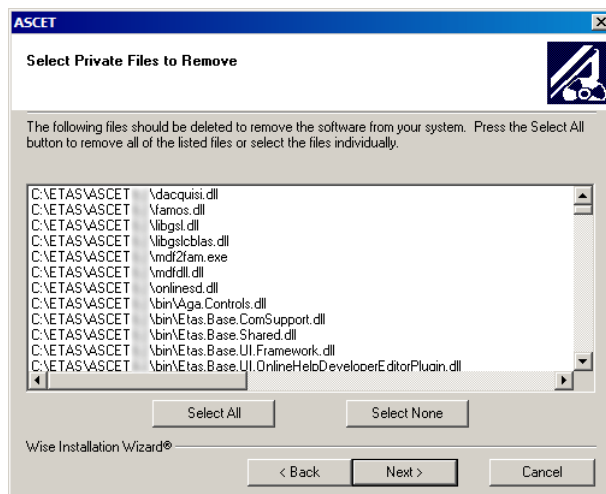
2.5.2 Custom Uninstall

To uninstall ASCET (user-defined):

- Start the uninstall procedure.
The following window is displayed:



- Select **Custom**.
- Click the **Next** button.
The "Select Private Files to Remove" window opens.



- In the "Select Private Files to Remove" window, select the files you want to remove.
- Click the **Next** button.
- In the "Select Directories to Remove" window, select the directories you want to remove.
- Click the **Next** button.

- In the "Select INI Files to Remove" window, select the *.ini files you want to remove.
- Click the **Next** button.
- In the "Select INI Items to Edit" window, select the *.ini entries you want to edit.
- Click the **Next** button.
- In the "Select Registry Keys to Remove" window, select the registry keys you want to remove.
- Click the **Next** button.
- In the "Select Registry Trees to Remove" window, select the registry folders you want to remove.
- Click the **Next** button.
- In the "Select Registry Keys to Edit" window, select the registry keys to be edited.
- Click the **Next** button.
- In the "Select Sub-Systems to Remove" window, select the sub-systems you want to remove.
- Click the **Next** button.
- In the "Perform Uninstall" window, click the **Finish** button.

The deinstallation is performed.

You can cancel the custom uninstall process, as well as the automatic deinstallation, using the **Cancel** button.

Tip

If data has already been deleted, ASCET must be reinstalled.

3 Licensing the Software

To be able to work with an ETAS software product, you require a license. This section contains basic details on this subject.

- "ETAS License Models" on page 35
- "How to Get a License" on page 35
- "The License File" on page 36
- "Grace Mode" on page 38
- "The "Expiration Warning" Window" on page 38
- "Borrowing a License" on page 39

Details concerning the scope of the licenses and other legal aspects can be found in "Terms and Conditions".

3.1 ETAS License Models

Machine-Named License, Local

- A license of this type is managed by the users themselves.
- As it is linked to a particular PC (better: to the MAC address of the Ethernet adapter), it is valid wherever the PC is used.
- When you change your PC, you require a new license.

User-Named License, Server-Based

- The licenses (of a department or company) are managed centrally on a server by a designated person.
- The license is linked to the MAC address of the server and to the user name with which the user is registered in the network.
- If the relevant PC is disconnected from the network, the license can be "borrowed".

Concurrent (or Floating) License, Server-Based

Most of what is true of the user-named license applies to this type of license. The difference is that here several users share a limited number of licenses.

3.2 How to Get a License

If your company has a tool coordinator and server-based license management for ETAS software, contact this person. Otherwise (in the case of a machine-named license) you obtain your license from the ETAS license portal (the URL is shown on your Entitlement Certificate).

There are three ways of logging in on the welcome page:

- **Activation ID**

Once you have logged in, a specific activation¹ is visible and can be managed – the activation ID is shown on your Entitlement Certificate.

- **Entitlement ID**

All activations of the entitlement² are visible and can be managed (e.g. for a company with just one entitlement).

- **E-mail and password**

All activations of the entitlements assigned to the user account are visible and can be managed (e.g. for a tool coordinator responsible for several entitlements).

If you need help in the portal, click the [Help](#) link.

What Information is Required?

Information on the hosts must be entered to activate licenses:

- Machine-named license
The MAC address of the Ethernet adapter to which the license is to be bound is required here.
- User-named license
Here, you need a server host or a server triad as well as a user name.
- Concurrent (floating) license
Here, you need a server host or a server triad.

Tip

If this data changes (e.g. due to changes in the hardware or a change of user), the license must be given a "rehost". This procedure is also described in the portal help file.

License File

The result of your activities is the provision of a file `<name>.lic` with which you can license your software in the ETAS License Manager.

3.3 The License File

To check the license status:

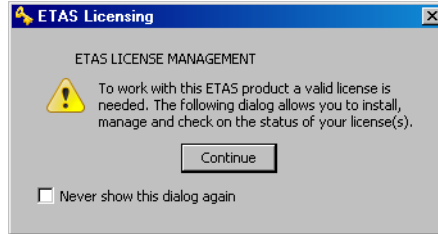
- In the Windows start menu, select **Programs** → **ETAS** → **License Management** → **ETAS License Manager** to open the ETAS License Manager.

Or

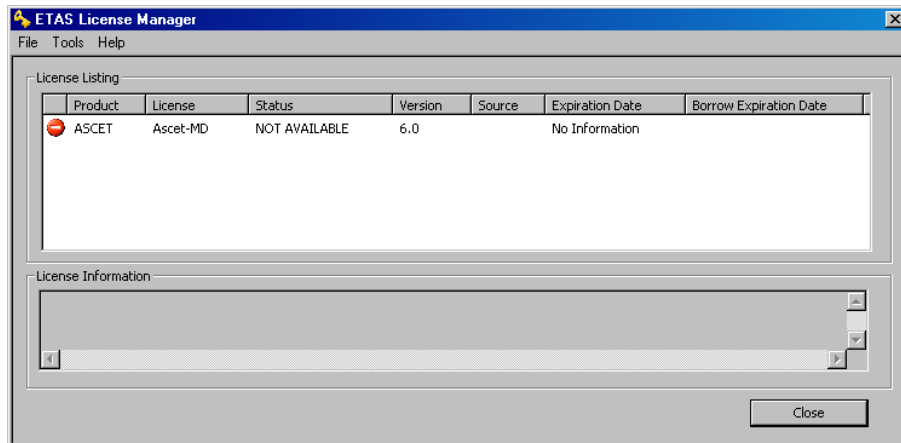
¹. The activations refer to a specific product, its license conditions, the available number of licenses and other details required for generating a license. Activations are identified uniquely with activation IDs.

². An entitlement shows the authorizations you have as a user; it stands for the right to own one or more licenses for a product. It is a kind of account of rights of use for software from which you can take licenses as you need to.

- In the Component Manager, select **Help** → **License Info**.

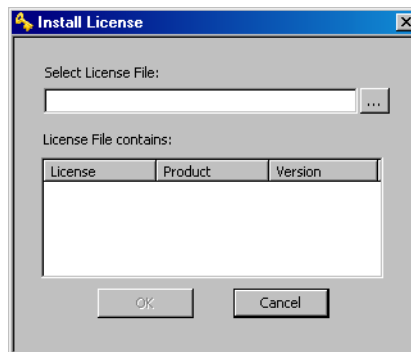


- Click **Continue**.
The ETAS License Manager contains an entry for each installed ASCET product. The symbol at the beginning of the entry and the "Status" column entry indicate if a valid license has already been obtained. If available, already installed licenses for other ETAS products will be listed as well.



To add a license file:

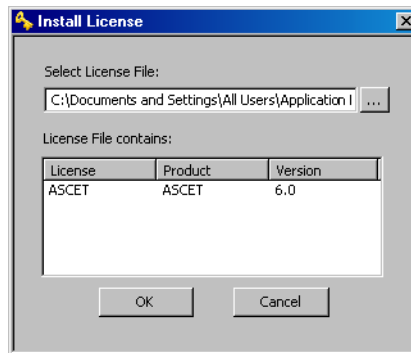
- Open the ETAS License Manager (cf. page 36) and select **File** → **Add Licensing File**.
The "Install License" dialog window opens.





- Next to the "Select License File" field click the ... button.
- In the file selection window, select the license file and click **Open**.

The "Install License" dialog window shows information on the selected license.



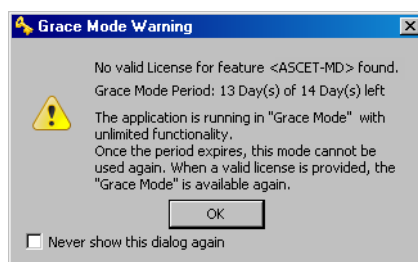
Tip

The "Version" column shows the version number of the license, not the version number of the software.

- Confirm with **OK**.
The license just added is now listed in the ETAS License Manager. A green symbol before the entry shows that the license is valid.
- Close the ETAS License Manager.

3.4 Grace Mode

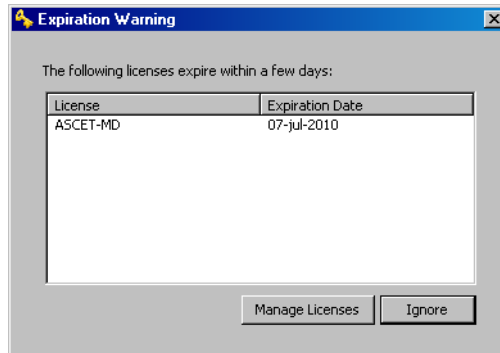
If you have not yet installed a license, you can still operate the software for a limited amount of time – it then runs in what is referred to as *grace mode*. The window shows you how long you can continue to operate the software in this mode.



3.5 The "Expiration Warning" Window

If your installed license runs out in the next 30 days, a warning is shown when you open the ETAS software.

The "Expiration Warning" window contains a list of licenses that expire in the next 30 days. The expiration date is shown for each license; in the case of borrowed licenses (see "Borrowing a License" on page 39) it also shows when the borrowing period expires (i.e. the date when borrow mode runs out).



Click **Manage Licenses** to open the ETAS License Manager and install a valid license file. As soon as you have installed a valid license, you can continue to operate the ETAS software in normal operating mode.

Click **Ignore** to close the dialog box and start the ETAS software. This is only possible during the grace period; as soon as the grace period has expired, you can only continue to use the ETAS software once you have installed a valid license file.

As soon as the expiration date has been reached, you can continue to use the ETAS software for a further 14 days in what is referred to as limited mode (see "Grace Mode" on page 38). Once this phase is over, the ETAS software can only be used when a new or updated license file has been installed.

3.6 Borrowing a License

The borrowing mechanism makes it possible to work offline even when using a server-based license (i.e. without being connected to the license server).

Tip

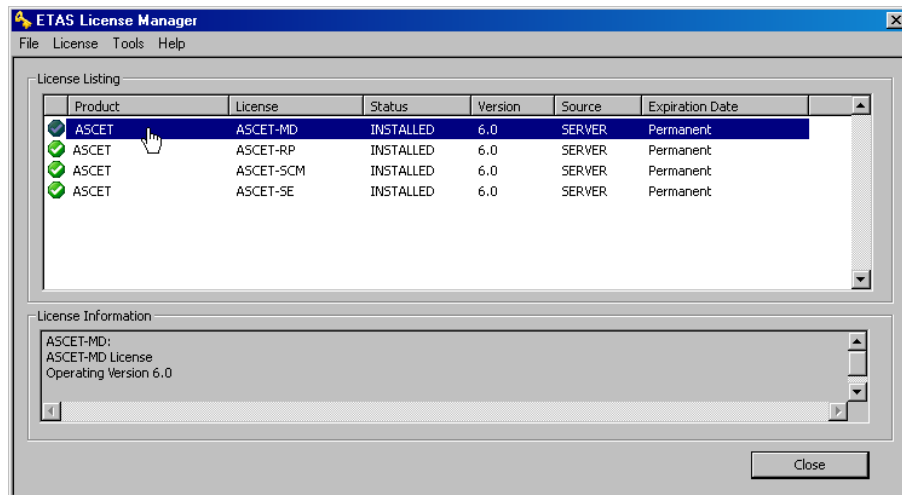
You can only borrow a license if a server-based license is being used!

To borrow a license, proceed as follows:

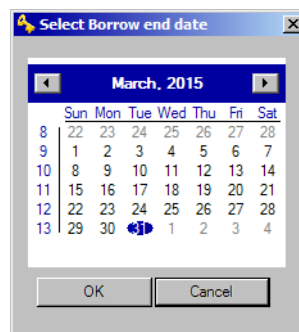
To borrow a license

- Make sure that the ETAS software the license of which you want to borrow is not open.

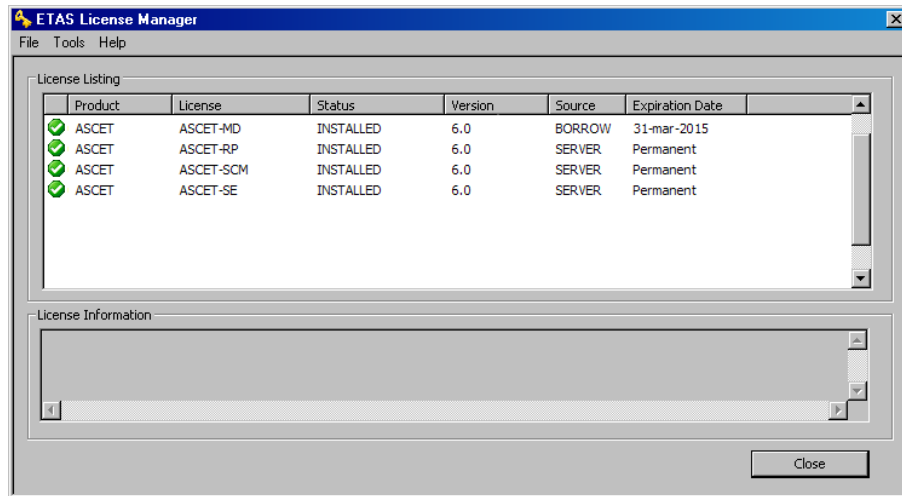
- Select the license you want to borrow in the "License Listing" table of the ETAS License Manager.



- Select **License** → **Borrow license**.
The "Select Borrow end date" dialog box opens.
- Select the date until which you want to borrow the license from the calendar displayed and click **OK**.



The text in the "Source" column of the ETAS License Manager changes from **SERVER** to **BORROW**, and the expiration date of the borrowed license is displayed.



You can now use the relevant ETAS software offline until the expiration date of the borrowed license has been reached.

If you want to use the ETAS software longer than you had originally planned, you can borrow the license again. If you stop using the ETAS software earlier than planned, you can return the license to the license server early ([License](#) → [Return License Early](#)). A borrowed license can only be returned by the person that borrowed it; it cannot be returned by another person.

4 **ETAS Contact Addresses**

ETAS HQ

ETAS GmbH

Borsigstraße 14

70469 Stuttgart

Germany

Phone: +49 711 3423-0

Fax: +49 711 3423-2106

WWW: www.etas.com

ETAS Subsidiaries and Technical Support

For details of your local sales office as well as your local technical support team and product hotlines, take a look at the ETAS website:

ETAS subsidiaries WWW: www.etas.com/en/contact.php

ETAS technical support WWW: www.etas.com/en/hotlines.php

Index

Symbols

.NET 3.5 14

.NET 4 14

A

ASCET

borrow license 39

install add-on 16

install basic system 11

install license file 37

license file 36

path specifications 13

sample files 15

uninstall 31, 33

B

Basic installation 21

borrow license 39

C

command line 20

basic installation 21

silent installation 20

user-defined *.ini file 21

D

default directories 30

E

editor

element 43

element editor

open 43

ETAS Contact Addresses 42

ETAS License Manager

open 36

ETAS license models 35

G

Grace mode 38

I

install license file 37

Installation

assign user privilege (Win Vista) 9

assign user privilege (Windows 7)

9

basic 21

cancel 17

command line 20

customize configuration file 23

customize data for network ~ 27

install add-on 16

install license file 37

integrate modified database 28

integrate modified user profile 28

Installation

- network installation 21
- overwrite existing version 18
- path specifications 13
- set licensing behavior 25
- silent 20
- start ASCET installation 11
- system requirements 9
- uninstall ASCET 31, 33
- unsupported OS 20
- user-defined *.ini file 21
- without administrator privilege 20

L**License**

- borrowing 39
- expiration warning 38
- grace mode 38
- install license file 37
- license file 36
- license models 35

Licensing 35

- grace mode 38
- set behavior 25
- status 36, 37

N

Network installation 21–28

P

Product liability disclaimer 5

S

Safety Instructions

- technical state 5

sample files 15

Silent installation 20