

Debug Messages in the Experiment of an ASCET model



Question:

How can I output some debug messages from my model during runtime in the experiment environment?

Dependent on the model behaviour the user may like to get some additional string messages e.g. in the monitor window in order to get more information about the model during runtime.



Answer:

Details:

ASCET provides two different C macros which can be used in any C-code component for the PC target or for Rapid Prototyping. For the output of debug information from C-code there exists two different functions. Both functions need as a handle a String and optionally a parameter. The possible outputs are:

- Error message to be displayed in the Ascet Monitor Window
C Macro: `asdWriteUserError("myerrorstring");`
- Debug information (`asdWriteUserDebug`) to be displayed in the Ascet Debug Window
C Macro: `asdWriteUserDebug("myerrorstring");`

Format information is needed (i.e. "\n" for Line Feed at the end of the text). The Syntax is the same like for `printf()`.

Example:

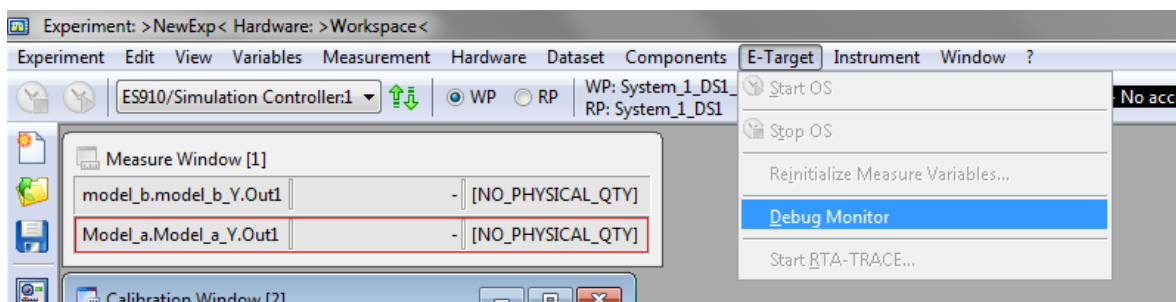
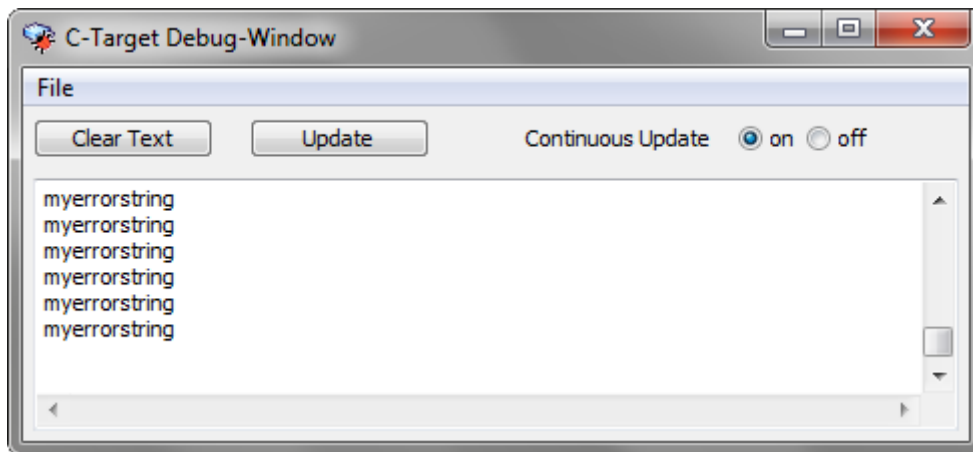
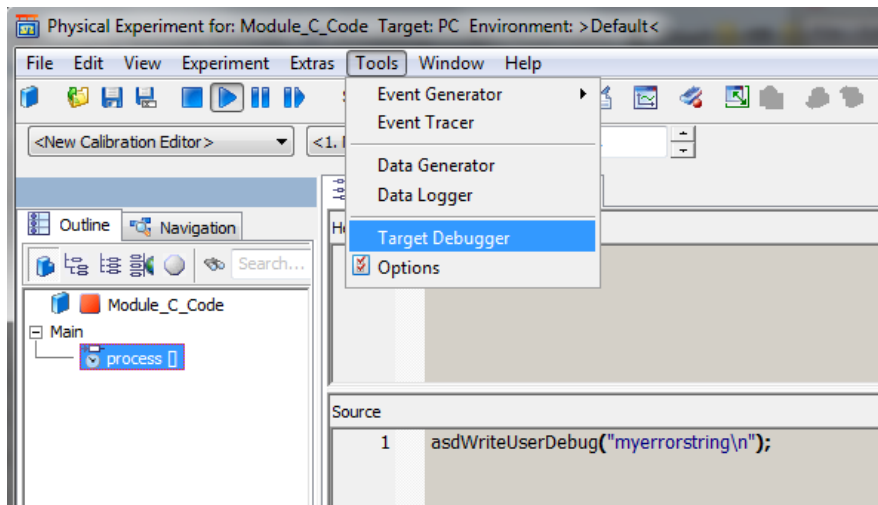
```
asdWriteUserError ("Run Time Error: division by zero with variable <cont> in component  
<Module_Blockdiagram>\n",Parameter);
```



Additional information:

The Error messages automatically occur in the Monitor window of e.g. ASCET or INCA.

The Debug messages are shown in the Debug windows which have to be opened manually.



In case of further questions:

Please feel free to contact our Support Center, if you have further questions.

Here you can find all information: <http://www.etas.com/en/hotlines.php>

The following information (hereinafter referred to as „FAQ“) are provided without any (express or implied) warranty, guarantee or commitment regarding completeness or accuracy. Except in cases of willful damage, ETAS shall not be liable for losses and damages which may occur or result from the use of this information (including indirect, special or consequential damages).