

A red line starts from the top right, goes down and left, then turns down and left again, ending with a red dot. There is a white dot at the intersection of the two segments.

ETAS ASCET-DIFF V6.4

Getting Started

Copyright

The data in this document may not be altered or amended without special notification from ETAS GmbH. ETAS GmbH undertakes no further obligation in relation to this document. The software described in it can only be used if the customer is in possession of a general license agreement or single license. Using and copying is only allowed in concurrence with the specifications stipulated in the contract.

Under no circumstances may any part of this document be copied, reproduced, transmitted, stored in a retrieval system or translated into another language without the express written permission of ETAS GmbH.

© **Copyright 2022** ETAS GmbH, Stuttgart

The names and designations used in this document are trademarks or brands belonging to the respective owners.

ASCET-DIFF V6.4 – Getting Started R08 EN – 12.2022

Contents

1	Safety and Privacy Information	4
1.1	Intended Use.....	4
1.2	Target Group.....	4
1.3	Classification of Safety Messages.....	4
1.4	Safety Information.....	5
1.5	Privacy Notice.....	5
1.5.1	Data Processing.....	5
1.5.2	Data and Data Categories.....	5
1.5.3	Technical and Organizational Measures.....	6
2	About ASCET-DIFF	7
2.1	Finding Out More.....	7
3	Installation	9
3.1	Preparations.....	9
3.1.1	Delivery Scope.....	9
3.1.2	ASCET-DIFF License.....	9
3.1.3	System Prerequisites.....	9
3.1.4	Required User Privileges for Installation and Operation.....	9
3.2	Installation.....	10
3.3	Command-Line Installation / Uninstallation.....	16
3.4	Side-by-Side Installation.....	17
3.5	Uninstallation.....	17
4	Starting ASCET-DIFF	20
4.1	Starting the Standalone Variant.....	20
4.2	Starting the Add-On Variant.....	20
4.3	Starting ASCET-DIFF via the Command Line.....	22
5	Starting ASCET-DIFF Model Viewer	27
5.1	Starting ASCET-DIFF Model Viewer via Command Line.....	27
5.2	Starting ASCET-DIFF Model Viewer from Windows Explorer.....	30
6	Contact Information	32
	Index	33

1 Safety and Privacy Information

In this chapter, you can find information about the intended use, the addressed target group, and information about safety and privacy related topics.

Please adhere to the ETAS Safety Advice (**Help > ETAS Safety Advice**) and to the safety information given in the user documentation.

ETAS GmbH cannot be made liable for damage which is caused by incorrect use and not adhering to the safety information.

1.1 Intended Use

ASCET-DIFF is a program that compares two ASCET models. The ASCET-DIFF Model Viewer variant allows a thorough inspection of an ASCET model even if no other part of the ASCET product family is installed on your computer.

1.2 Target Group

ASCET-DIFF users should be familiar with the Microsoft Windows operating systems. They should be able to execute menu functions, enable buttons, etc. Furthermore, users should be acquainted with the Windows file storage system, particularly the relations between files and directories. Users must know how to use the basic functions of the Windows File Manager and Program Manager or the Windows Explorer, respectively, and they should be familiar with the "drag-and-drop" functionality.

Anyone who is not familiar with the basic techniques found in Microsoft Windows should learn them before installing and using ASCET-DIFF. For more information on the Windows operating system, please refer to the manuals published by Microsoft Corporation.

Knowledge of ASCET is required for the successful use of ASCET-DIFF.

1.3 Classification of Safety Messages

Safety messages warn of dangers that can lead to personal injury or damage to property:



DANGER

DANGER indicates a hazardous situation that, if not avoided, will result in death or serious injury.



WARNING

WARNING indicates a hazardous situation that, if not avoided, could result in death or serious injury.

**CAUTION**

CAUTION indicates a hazardous situation that, if not avoided, could result in minor or moderate injury.

NOTICE

NOTICE indicates a situation that, if not avoided, could result in damage to property.

1.4 Safety Information

Please adhere to the ETAS Safety Advice and to the following safety information to avoid injury to yourself and others as well as damage to property.

In addition, take all information on environmental conditions into consideration before setup and operation (see the documentation of your computer, hardware, etc.).

Further safety advice for this ETAS product is available in the following formats:

- in electronic form on the installation medium: `Documentation\General\ETAS_Safety_Advice.pdf`
- ASCET V6.4 safety manual, available at ETAS upon request

1.5 Privacy Notice

Your privacy is important to ETAS so we have created the following Privacy Statement that informs you which data are processed in ASCET-DIFF, which data categories ASCET-DIFF uses, and which technical measure you have to take to ensure the users' privacy. Additionally, we provide further instructions where this product stores and where you can delete personal data.

1.5.1 Data Processing

Note that personal data or data categories are processed when using this product. The purchaser of this product is responsible for the legal conformity of processing the data in accordance with Article 4 No. 7 of the General Data Protection Regulation (GDPR). As the manufacturer, ETAS GmbH is not liable for any mishandling of this data.

1.5.2 Data and Data Categories

Please note that this product creates files containing file names and file paths, e.g. for purposes of error analysis, ensuring correct deinstallation, referencing source libraries, or for communicating with third-party programs.

The same file names and file paths may contain personal data, if they refer to the current user's personal directory or subdirectories (e.g., `C:\Users\<UserId>\Documents\...`).

If you do not want personal information to be included in the generated files, please make sure of the following:

- The workspace of the product points to a directory without personal reference.
- Windows environment variables (such as the temporary directory) refer to directories without personal reference because these environment variables are used by the product.

In this case, please also make sure that the users of this product have read and write access to the newly set directories.

When using the ETAS License Manager in combination with user-based licenses, particularly the following personal data or data categories are recorded for the purpose of license management:

- User data: UserID
- Communication data: IP address

When using ASCET-DIFF, particularly the following personal data or data categories are recorded for the purposes of user-specific settings and user-specific log files:

- User data: UserID

1.5.3 Technical and Organizational Measures

This product does not itself encrypt the personal data or data categories that it records. Ensure that the data recorded are secured by means of suitable technical or organizational measures in your IT system, e.g. by using classic anti-theft and access protection.

Personal data in generated files can be deleted by tools in the operating system.

2 About ASCET-DIFF

ASCET-DIFF is a program that compares two ASCET models. This allows you to compare, e.g., two development states, and produces clear results in a short time. ASCET-DIFF can be used as standalone tool (see also section 4.1 "Starting the Standalone Variant"), or as add-on to ASCET (see also section 4.2 "Starting the Add-On Variant").

The comparison results are displayed in various tabs; different colors are used to distinguish between identical and changed elements, as well as elements occurring in only one component. Details are given in the ASCET-DIFF online help.

In addition, the ASCET-DIFF Model Viewer allows a thorough inspection of an ASCET model even if no other part of the ASCET product family is installed on your computer.

With ASCET-DIFF V6.4, the following types of ASCET components can be compared or viewed:

- block diagram classes/modules,
- AUTOSAR software components,
- AUTOSAR interfaces
- AUTOSAR mode groups
- state machines
- ESDL and C code components
- enumerations
- records
- containers
- projects

2.1 Finding Out More

The ASCET-DIFF documentation consists of the following parts:

- this Getting Started manual
- an online help

The *ASCET-DIFF Getting Started* manual consists of the following chapters:

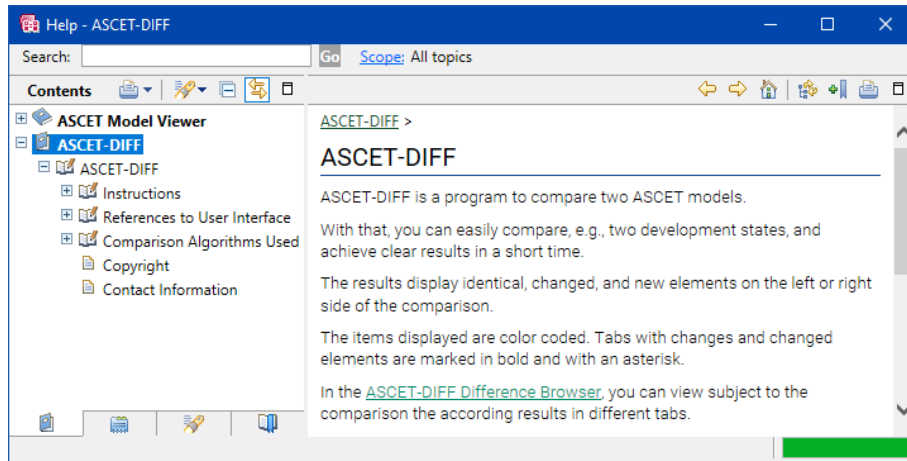
- **"Safety and Privacy Information" on page 4**
- **"About ASCET-DIFF" on page 7** (this chapter)
You are given a brief overview of ASCET-DIFF.
- **"Installation" on page 9**
This chapter is intended for all users who install, maintain and uninstall ASCET-DIFF. It provides information on the delivery scope, hardware and software requirements, and the necessary licenses.
- **"Starting ASCET-DIFF" on page 20**
This chapter explains how to start ASCET-DIFF both as standalone tool and as ASCET add-on.

- **“Starting ASCET-DIFF Model Viewer” on page 27**

This chapter explains how to start the ASCET-DIFF Model Viewer via the command line or the context menu in the Windows file explorer.

- **“Contact Information” on page 32**

The *ASCET-DIFF online help* is opened with the **Help > Help Contents** menu option.



The panes of the help window provide you with the following information:

- The left pane shows the table of content, index, search results, links, or user-defined bookmarks.
- The right pane contains the current help topic.

3 Installation

This chapter provides information preparing and performing the installation of ASCET-DIFF on a computer, for licensing and uninstalling the tool.

3.1 Preparations	9
3.2 Installation	10
3.3 Command-Line Installation / Uninstallation	16
3.4 Side-by-Side Installation	17
3.5 Uninstallation	17

3.1 Preparations

Check the delivery package to make sure it is complete and make sure your system corresponds to the system requirements. Make sure that you have the necessary user privileges.

3.1.1 Delivery Scope

The delivery scope of ASCET-DIFF includes:

- ASCET-DIFF program files
- ASCET-DIFF Getting Started manual in PDF format¹

3.1.2 ASCET-DIFF License

The Difference Browser and the Model Viewer of ASCET-DIFF each require a valid license if you want to use the tools. You obtain the license file required for licensing either from your tool coordinator or through a self-service portal on the ETAS internet site at www.etas.com/support/licensing. To request the license file you have to enter the activation number which you received from ETAS during the ordering process.

To open the ETAS License Manager, open the Windows Start menu, go to the app list and select **E > ETAS > ETAS License Manager**.

Follow the instructions given in the dialog. For further information about, for example, the ETAS license models, or borrowing a license, press <F1> in the ETAS License Manager.

3.1.3 System Prerequisites

ASCET-DIFF requires the same system prerequisites as ASCET. They are listed in the ASCET V6.4.7 Release Notes.

3.1.4 Required User Privileges for Installation and Operation

User Privileges Required for Installation: In order to install ASCET-DIFF on a computer, you need the user privileges of an administrator. Please contact your system administrator, if necessary.

User Privileges Required for Operation: The operation of ASCET-DIFF requires the same user privileges as ASCET.

1. PDF reader required

3.2 Installation

The installation is independent of whether you install ASCET-DIFF from installation disk or a network drive.

Windows 10 (64 bit in 32 bit compatibility mode) is required to install ASCET-DIFF.

NOTE

It is strongly recommended that you uninstall an existing version of ASCET-DIFF V6.4.* before you install ASCET-DIFF V6.4.7, unless you want a side-by-side installation.

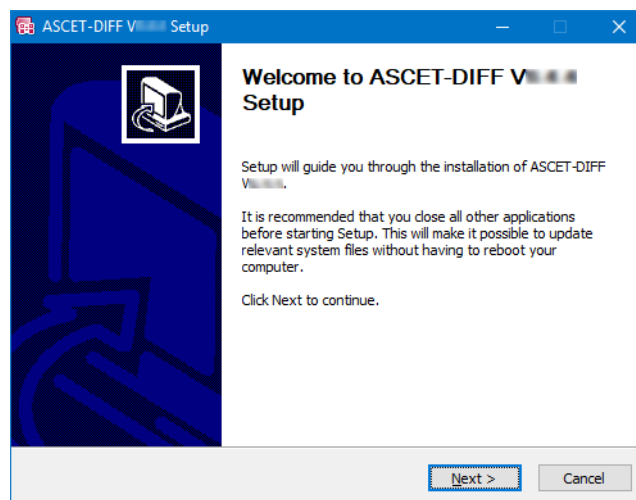
See section 3.5 on page 17 for details on uninstalling ASCET-DIFF.

See section 3.4 on page 17 for details on side-by-side installation.

To start the ASCET-DIFF installation

1. To install ASCET-DIFF from installation disk, do the following:
 - i. Insert the installation disk into the respective drive of your computer.
 - ii. If the installation does not start automatically, double-click `start.exe`.
An installation dialog opens.
 - iii. In the installation dialog, click the "Main" link to go to the installation page.
 - iv. Click the "ASCET-DIFF" link to install the ASCET-DIFF base system.
2. To install ASCET-DIFF from a file share, do the following:
 - i. Navigate to the ASCET-DIFF installation file.
 - ii. Double-click `setup.exe`.

The installation starts.



3. Click **Next** to continue.

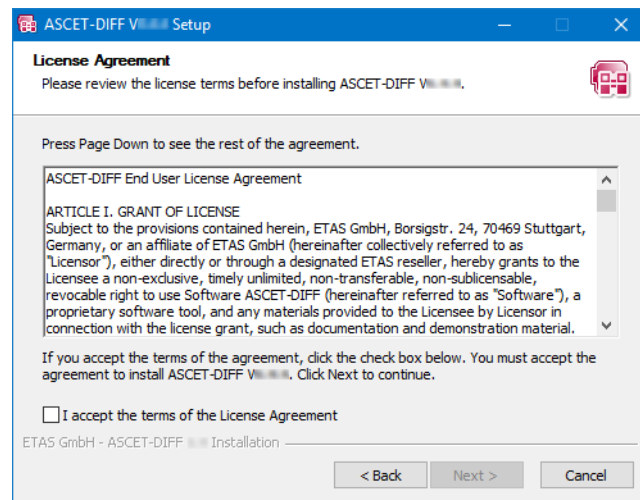
The installer checks if your computer meets the system requirements for ASCET-DIFF installation. The result is displayed in the "System Check" window.

If your system meets the installation requirements, the installer proceeds automatically to the next window.

If your system does not meet the system requirements, follow the instructions in the "System Check" window and re-start the installation.

To accept the license agreement

The following window shows the license agreement.



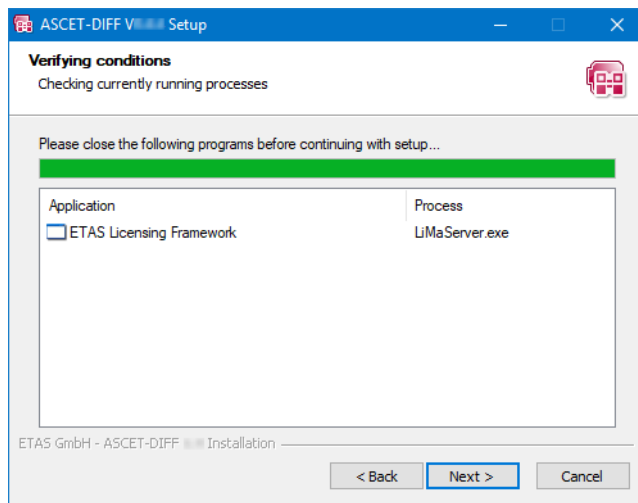
1. Read the license agreement, then activate the **I accept the terms of the license agreement** option.

If you do not accept the license agreement, you cannot continue the installation.

2. Click **Next** to continue.

To check for blocking applications

The "Verify conditions" window shows running applications that block the installation.



1. Close each application with its native closing mechanism.

Or

2. Click **Next**.

You are asked if you want to close the applications.

3. Click **Yes** to continue.

If an application cannot be closed normally, you are asked if you want to kill the respective process.

NOTICE

Killing a process can lead to data loss.

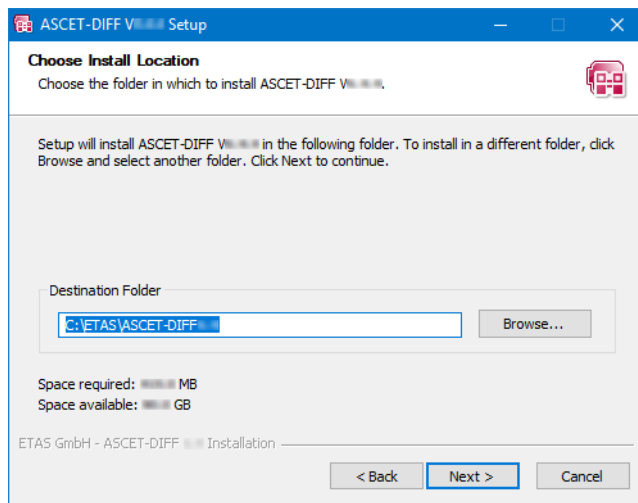
Before you agree to kill the process, make sure that no crucial data will be lost.

4. Click **Yes** to continue.

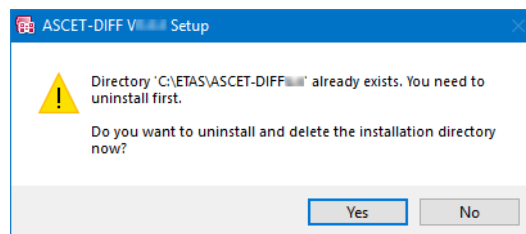
Once all blocking applications are closed, the installation continues automatically.

To define path settings

In the "Installation Path" window, you are prompted to enter a destination directory for the installation (referred to as <installation>).



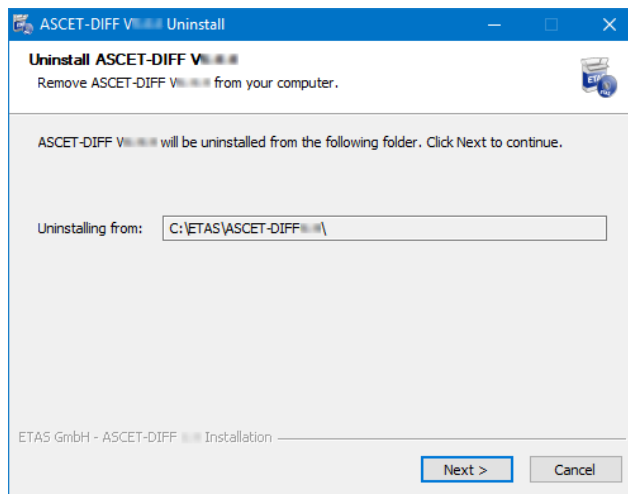
1. Enter or select (via the **Browse** button) a valid path.
An invalid path deactivates the **Next** button. You have to correct the path before you can continue.
2. Click **Next** to continue.
If the same version of ASCET-DIFF is already installed in the selected directory, or if you selected an existing directory, you are asked to uninstall the existing installation.



3. Click **Yes** to continue.
If the existing folder does not contain an ASCET-DIFF installation, the folder is deleted. Continue reading at section "To specify a folder in the Start menu" on page 14.

To uninstall an existing version

If you selected an existing folder that contains an ASCET-DIFF installation, the "Uninstall ASCET-DIFF" window opens.



NOTE

The above screenshot shows the "Uninstall ASCET-DIFF" window of V6.4.7. If you selected a directory with an older ASCET-DIFF version, the uninstall window will look different.

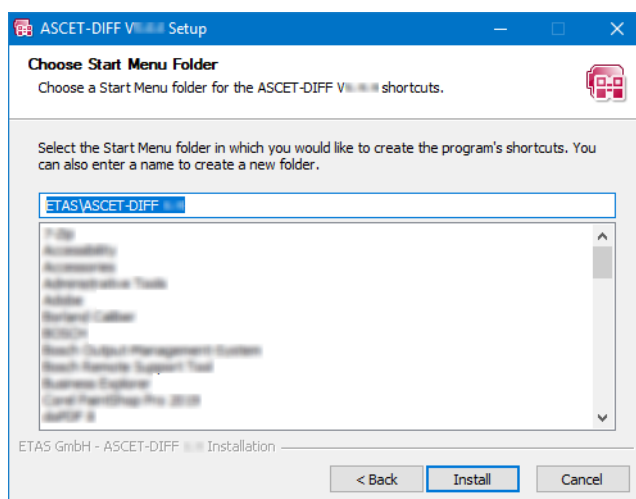
1. Click **Next**.

The existing version is uninstalled. Once uninstallation is complete, the **Close** button is available.

2. Click **Close**.

The installation continues.

To specify a folder in the Start menu



1. Do one of the following:

- Accept the default folder name.
- Enter a new folder name.

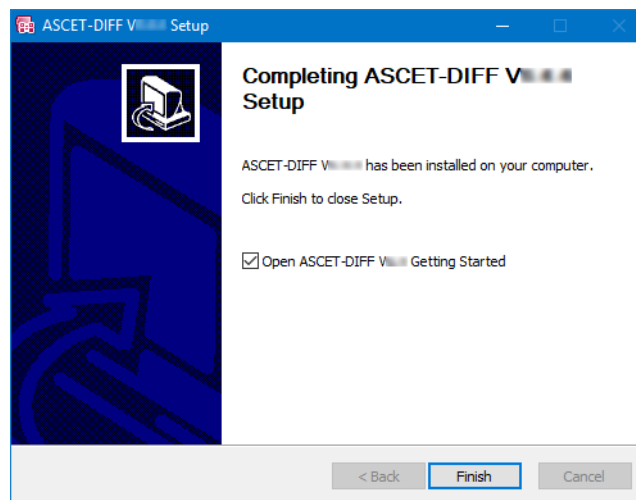
If desired, you can enter folder and subfolder.

To install ASCET-DIFF

NOTE

The next step will start the installation. You **cannot** cancel the installation once it is running; the **Cancel** button is deactivated.

1. In the "Choose Start Menu Folder" window, click on Install.
The installation is performed. A progress indicator shows how the installation is progressing.
When the installation is complete, the "Installation Complete" window opens.
2. Click **Next**.
You are prompted to finish the installation.



3. If desired, activate the **Open ASCET-DIFF V6.4 Getting Started** option.
The option opens the Getting Started manual for ASCET-DIFF.
4. Click **Finish** to end the installation.

An icon is placed on the desktop of your PC, and a folder with the following entries is created in the Windows Start menu:



- **ASCET-DIFF V6.4**
The ASCET-DIFF program is started.
 - **ASCET-DIFF V6.4 ***
Links to the Getting Started manual and Release Note for ASCET-DIFF.
- The ETAS License Manager is available in the Windows Start menu at **E > ETAS > ETAS License Manager**.

3.3 Command-Line Installation / Uninstallation

This section describes the command-line installation. Installation via dialog windows is described in section 3.2 "Installation" on page 10.

When you start the ASCET-DIFF installation from a command line, you can use several command-line parameters to customize the installation.

NOTE

The command-line options are case-sensitive. For example, `/S` will cause a silent installation, but `/s` will not.

`/S`

Silent installation mode. With this installation mode, no dialog windows requiring user information open.

Default values are used for all information normally requested in installation windows. Error messages are hidden, too.

NOTE

`/S` must be the first command-line argument. If other arguments precede it, `/S` has no effect.

`/NCRC`

Skips CRC check of the installer (ignored if `CRCCheck force` is set in the installer).

`/D`

Sets the installation directory.

NOTE

`/D` must be the last parameter in the command line.

`/D` must not contain any quotes. Use the following syntax:

- path without spaces – `/D=C:\ETAS\ASCET-DIFF`
- path with spaces – `/D=C:\Program Files\ASCET-DIFF`

Examples:

```
setup.exe /S
```

Triggers a silent installation with default installation path and CRC check.

```
setup.exe /NCRC /D=C:\Tools\ASCET-DIFF
```

Triggers a non-silent installation without CRC check and with user-defined installation directory.

Command-line uninstallation:

```
uninstall.exe /S
```

with optional `/S` for silent uninstallation.

3.4 Side-by-Side Installation

ASCET-DIFF V6.4.x¹ and the current version ASCET-DIFF V6.4.7 can be installed in parallel if you observe the following.

- Make sure that you use different installation directories when you install the two ASCET-DIFF versions.
See also “To define path settings” on page 13 or “Command-Line Installation / Uninstallation” on page 16.
- The names of the two ASCET-DIFF V6.4 versions are identical. Therefore, the Windows start menu will show 2 entries **ASCET-DIFF 6.4** if you use the default settings for the Start menu folder.
See also “To specify a folder in the Start menu” on page 14.
- Since the desktop icons of all ASCET-DIFF V6.4.* versions use identical names, the desktop icon created during the second installation will overwrite the desktop icon of the previous installation.

NOTE

Do one of the following if you need desktop icons for both versions:

- Rename the desktop icon of the first ASCET-DIFF V6.4 installation before you start the second installation.
- After the second ASCET-DIFF V6.4 installation, use the `ASCET-DIFF.exe` file of the first installation to create a new desktop icon.

3.5 Uninstallation

Uninstalling ASCET-DIFF requires the user privileges of an administrator. There are several ways to start the uninstall process:

- **Programs and Features** from the Windows Control Panel
- **Apps > Apps & Features** from the Windows settings
- Windows start menu: right-click the ASCET-DIFF entry and select **Uninstall** from the context menu to open the Windows Control Panel

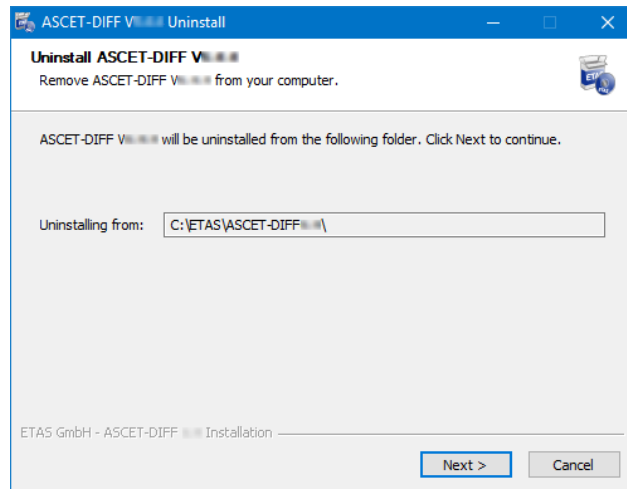
To uninstall ASCET-DIFF

1. Start the uninstall procedure.
An inquiry opens.

1. $x \leq 6$

2. Confirm with **Yes** or **Uninstall**.

The "Uninstall ASCET-DIFF V6.4.7" window opens.



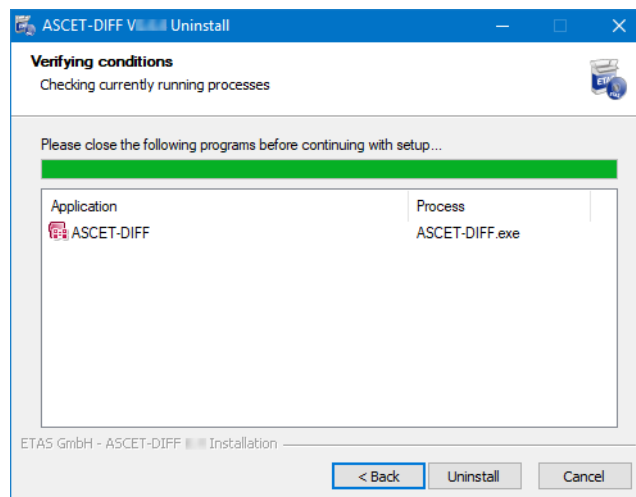
NOTE

This screenshot shows the "Uninstall ASCET-DIFF" window of V6.4.7.

If you uninstall an older ASCET-DIFF version, the uninstall window may look different.

3. Click **Next** to check if you have to close any applications before you can uninstall ASCET-DIFF.

If necessary, the "Verify conditions" window opens. It lists the applications you have to close.



4. Do one of the following to close each application listed in the window:
 - Right-click the "Verify conditions" window and select **Close** from the context menu.

- Use the closing mechanism of each application.

When all applications are closed, ASCET-DIFF is uninstalled

Or

5. Click **Uninstall**.

The applications are closed. If an application cannot be closed normally, you are asked if you want to kill the respective process.

NOTICE

Killing a process can lead to data loss.

Before you agree to kill the process, make sure that no crucial data will be lost.

6. Click **Yes** to continue.

When all blocking applications are closed, ASCET-DIFF is uninstalled without further notice. A progress indicator shows how the uninstallation is progressing.

Once uninstallation is complete, a success window opens.

7. Click **Close** to end the uninstallation.

4 Starting ASCET-DIFF

Depending on the way ASCET-DIFF is installed, you can start ASCET-DIFF individually or as add-on from within ASCET.

4.1 Starting the Standalone Variant

To start the standalone variant

1. Do one of the following to start ASCET-DIFF:

- In the Windows **Start** menu, select **E > ETAS > ASCET-DIFF V6.4** from the app list.

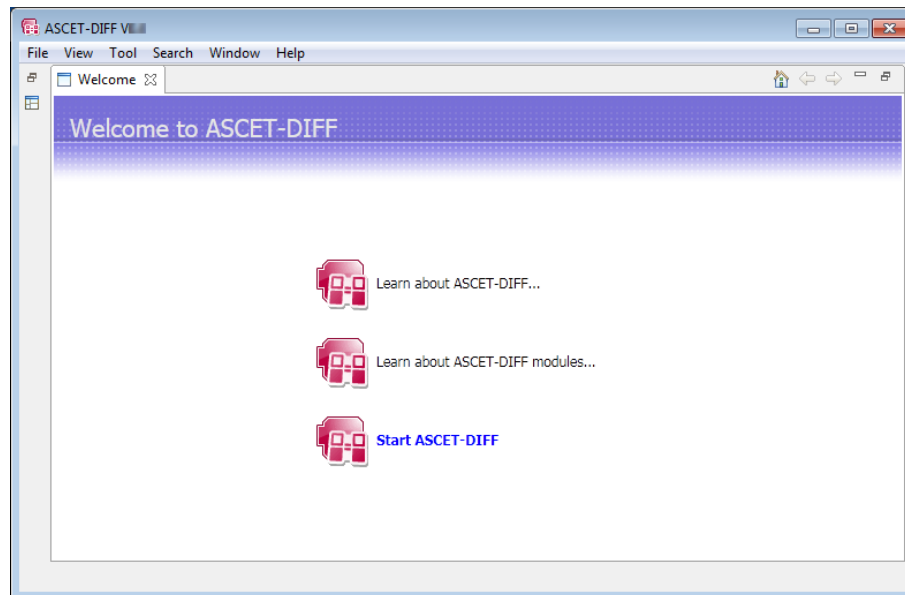


- Double-click the ASCET-DIFF desktop icon.

ASCET-DIFF starts.

If no valid license file is detected, a *grace mode* is activated. That is a limited period of time during which the tool is fully operational, but a license file is searched regularly, and a warning is issued when the search fails.

If you start ASCET-DIFF for the first time, the "Welcome to ASCET-DIFF" window opens.



2. Click the "Start ASCET-DIFF" link.

ASCET-DIFF opens.

4.2 Starting the Add-On Variant

If you want to use ASCET-DIFF V6.4 as add-on to ASCET V6.1 or higher, you have to perform the following steps before you can use ASCET-DIFF within ASCET and – if installed – ASCET-SCM.

If you want to use ASCET-DIFF V6.4 as add-on to older ASCET versions, i.e. V5.2.2 – V6.0, please contact ETAS.

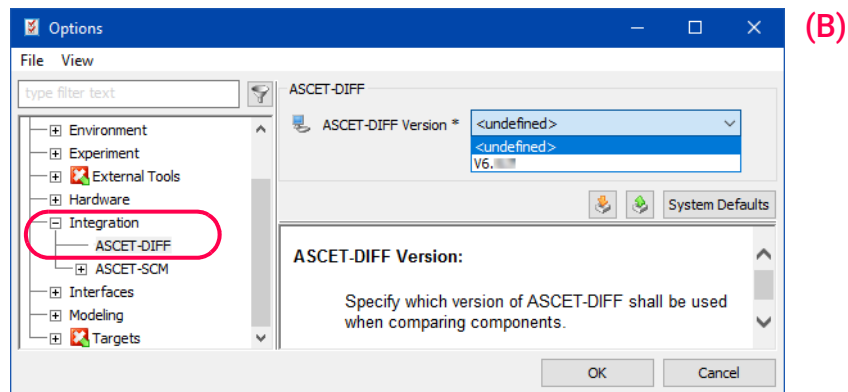
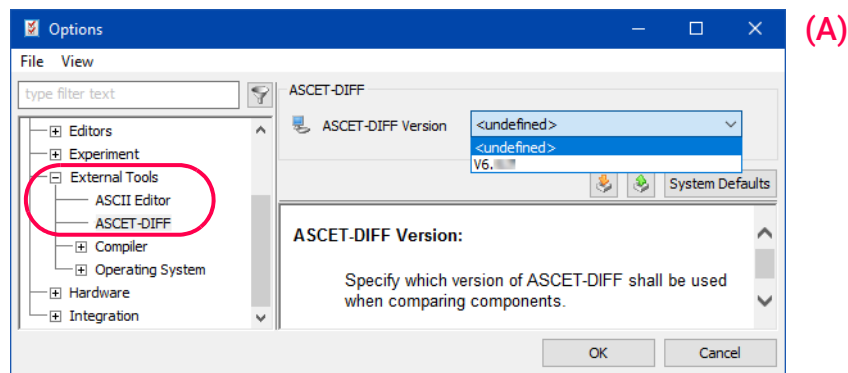
To set up ASCET-DIFF usage

1. Open the ASCET component manager.
2. In the component manager, select **Tools > Options**.

The ASCET options window opens.

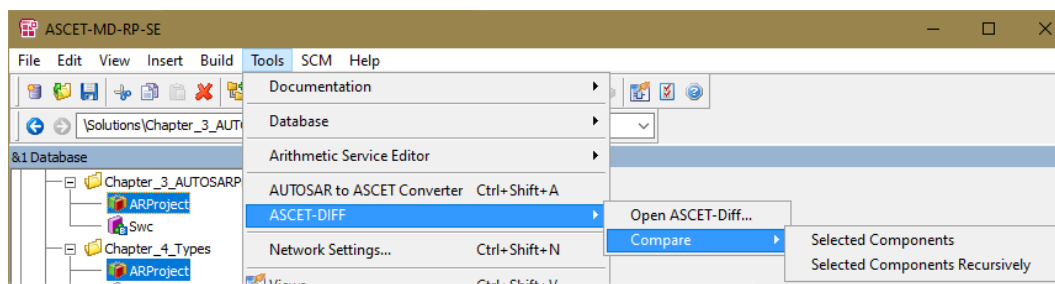
3. In the options window, go to the "ASCET-DIFF" node.

The nodes have been re-structured in ASCET V6.2. The old structure (ASCET V6.1 or older) is shown in the upper image (A), the new structure (ASCET V6.2 or newer) can be seen in the lower image (B)

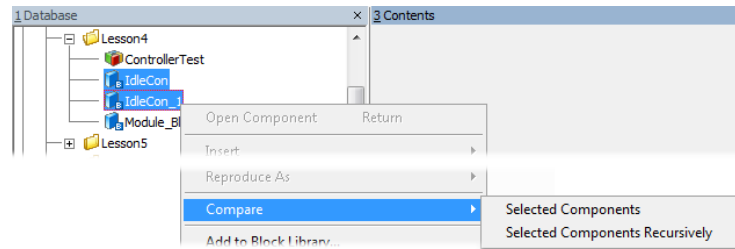


4. Select the ASCET-DIFF version you want to use with ASCET V6.1 or higher.
5. Click **OK** to close the ASCET options window.

With that, the **ASCET-DIFF** submenu is added to the **Tools** menu in the ASCET component manager.



The **Compare** submenu is also available as context menu in the "1 Database" or "1 Workspace" list.



To start ASCET-DIFF from within ASCET

If the add-on variant of ASCET-DIFF is installed, you can access ASCET-DIFF via the ASCET component manager.

1. Open the ASCET component manager.
2. In the "1 Database" or "1 Workspace" field, select two components you want to compare.
3. Do one of the following:
 - Select **Tools > ASCET-DIFF > Open** ASCET-DIFF to start the tool without comparing the components.
 - Open the components' context menu and select **Compare > Selected Components** or **Selected Components Recursively**.
 - Select **Tools > ASCET-DIFF > Compare > Selected Components** or **Selected Components Recursively**.

Selected Components compares only the selected components.

Selected Components Recursively compares the selected components and the referenced components.

The comparison is executed. ASCET-DIFF opens and displays the results.

4.3 Starting ASCET-DIFF via the Command Line

You can start ASCET-DIFF via the command line, too. Use the following syntax:

```
ASCET-DIFF "<left main file>" "<right main file>"
```

<left main file> and *<right main file>* are path and file name (including extensions) of the *.main.amd files of the components you want to compare.

ASCET-DIFF can be invoked from the command line in two different configurations:

- With switches
- Without switches

With switches: ASCET-DIFF can be invoked from the command line with switches using the following syntax:

```
ASCET-DIFF -lf "<left file path>" -rf "<right file path>"
-lc "<left component name>" -rc "<right component name>"
-lv "<left version string>" -rv "<right version string>"
```

where

- -lf is the left file path switch
- -rf is the right file path switch
- -lc is the left component name switch (optional)
- -rc is the right component name switch (optional)
- -lv is the left version string switch (optional)
- -rv is the right version string switch (optional)

The switches -lf and -rf are mandatory. If you do not specify -lc and -rc, you may be asked to select the components you actually want to compare; see "ASCET-DIFF is started without component names" on page 23 for more information.

The same command line switches can also be used to specify compressed files (originally in AXL or ZIP format) having renamed file names. The file extensions can also be arbitrary, however, the component names have to be specified as arguments.

Without switches: ASCET-DIFF can also be invoked from the command line without switches. In that case, the first argument is assumed to be the absolute path of the left file, and the second argument is assumed to be the absolute path of the right file. The following command line syntaxes are supported:

A ASCET-DIFF "<left file path>" "<right file path>"

See also section "ASCET-DIFF is started without component names" on page 23.

B ASCET-DIFF "<left file path>" "<right file path>"
"<relative path of left component>" "<relative path of right component>"

C ASCET-DIFF "<left file path>" "<right file path>"
"<relative path of left component>" "<relative path of right component>" "<timestamp>"

This syntax is used for interfacing ASCET-DIFF to ASCET.

D ASCET-DIFF "<left file path>" "<right file path>"
"<left component name>" "<right component name>"

This syntax can be used when left and right archive files have been renamed or have multiple components and the component names are passed as argument.

ASCET-DIFF is started without component names: If ASCET-DIFF is started via command line without explicitly specified component names, the following happens, depending on the content of the left and right files.

- The left file (e.g., `<left>.*1`) contains a single component `<leftComponent>`. The right file (e.g., `<right>.*`) contains a single component `<rightComponent>`.

ASCET-DIFF opens and compares `<leftComponent>` and `<rightComponent>`.

This works regardless of the actual values of the names `<left>`, `<right>`, `<leftComponent>` and `<rightComponent>`. It is not required that any of these names is identical to another.

NOTE

If `<leftComponent>` and `<rightComponent>` cannot be compared, the comparison aborts with the info message

Comparison not supported!

- One file (e.g., `<left>.*2`) contains one parent component `<leftParent>` and one or more child components. The other file (`<right>.*`) contains one parent component `<rightParent>` and – optionally – one or more child components. The parent-child relations are non-recursive.

ASCET-DIFF opens and compares `<leftParent>` and `<rightParent>`.

This works regardless of the actual values of the names `<left>`, `<right>`, `<leftParent>` and `<rightParent>`. It is not required that any of these names is identical to another.

NOTE

If `<leftParent>` and `<rightParent>` cannot be compared, the comparison aborts with the info message

Comparison not supported!

- One file (e.g., `<left>.*3`) contains one parent component `<Parent>` and one or more child components. One of the child components, `<Child>`, contains `<leftParent>` as a further child (directly or indirectly), i.e. the parent-child relation is recursive.

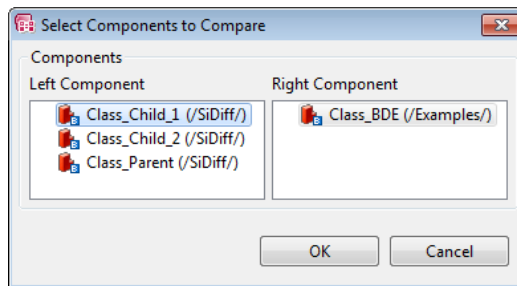
NOTE

In ASCET, recursive parent-child relations are strictly forbidden. If your model contains such a relationship, an error is issued during code generation.

If you detect a recursive parent-child relation while working with ASCET-DIFF, make sure that it is removed from the original ASCET model.

-
1. * = `main.amd` or – if the file uses AXL format – `axl` or `sxl` or `zip` or an arbitrary extension
 2. * = `axl` or `sxl` or `zip` or an arbitrary extension
 3. * = `axl` or `sxl` or `zip` or an arbitrary extension

ASCET-DIFF opens and shows a selection window that displays all components in *<left>.axl* that are part of the recursive parent-child relation.



"Left Component":
 Class_Parent contains Class_Child_1,
 Class_Child_1 contains Class_Child_2,
 Class_Child_2 contains Class_Parent
 The right file contains a single component.

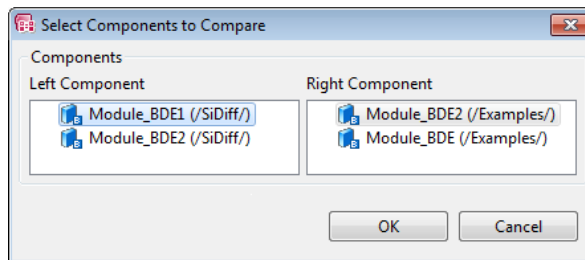
This works regardless of the actual values of the file or component names. It is not required that any of these names is identical to another. Select the left component and right component you want to compare, then click **OK** to start the comparison.

NOTE

If you selected two components that cannot be compared, the comparison aborts with the info message
 Comparison not supported!

- At least one file (e.g., *<left>. *¹*) contains two or more unrelated² components (*<Parent_1>*, *<Parent_2>*, etc), which may contain child components.

ASCET-DIFF opens and shows a selection window that displays the unrelated components in *<left>. ** and *<right>. **.



This works regardless of the actual values of the file or component names. It is not required that any of these names is identical to another. Select the left component and right component you want to compare, then click **OK** to start the comparison.

NOTE

If you selected two components that cannot be compared, the comparison aborts with the info message
 Comparison not supported!

1. * = axl or sxl or zip or an arbitrary extension
 2. i.e. without references from one *.main.amd file to another

The table summarizes the scenarios.

left file	left components	right file	right components	action
<left>.* ^a	<left-Component>	<right>.* ^a	<right-Component>	<left-Component> and <right-Component> are compared
<left>.* ^a	<leftParent>, <leftChild_1>, ...	<right>.* ^a	<rightParent>, <rightChild_1>, ...	<leftParent> and <rightParent> are compared
<left>.* ^a	<Parent> contains <Child>, which contains <Parent>	<right>.* ^a *		selection dialog opens
<left>.* ^a	<Parent_1>, <Parent_2>, ...	<right>.* ^a *		selection dialog opens

a.* = axl or sxl or zip or an arbitrary extension

5 Starting ASCET-DIFF Model Viewer

NOTE

You can only start the ASCET-DIFF Model Viewer if you have the required "ASCET-VIEW" license.

For more information on existing licenses, see the online help of the ETAS license manager or contact your system administrator.

The following sections describe how to start ASCET-DIFF in the model viewer mode using a command line prompt or the Windows context menu. It can be invoked from the command line with relative or absolute path specification.

- "Starting ASCET-DIFF Model Viewer via Command Line" on page 27
- "Starting ASCET-DIFF Model Viewer from Windows Explorer" on page 30

5.1 Starting ASCET-DIFF Model Viewer via Command Line

The installation directory of ASCET-DIFF is the starting point within the Command Prompt window. The default on a 64 Bit Windows OS is the following path:

C:\Program Files (x86)\ETAS\ASCET-DIFF 6.4 (standard)

C:\Program Files (x86)\ETAS\ASCET-DIFF 6.4.7 (side by side)

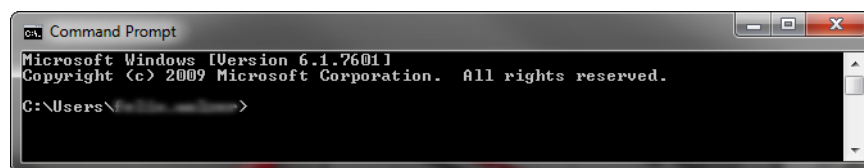
Then a distinction is made between the argument for relative and absolute path. How to invoke the Model Viewer using an absolute path specification is described in this section.

First, you must start the command prompt.

To start the command prompt and change directory to installation directory

1. In the Windows **Start** menu, enter `cmd` in the "Search programs and files" field and press <ENTER>.

The "Command Prompt" window opens.



2. In the "Command Prompt" window, enter the command for changing to the installation directory.

If you used the default installation path for a 64 Bit Windows OS, the command reads as follows:

```
cd "C:\Program Files (x86)\ETAS\ASCET-DIFF
6.4"
```

You are now in the installation directory of ASCET-DIFF V6.4.

To start ASCET-DIFF Model Viewer

Prerequisite is that you have already changed in the ASCET-DIFF installation directory (see Page 27).

1. In the "Command Prompt" window, enter the following syntax:

```
ASCET-DIFF.exe
-f "<path>\<file name>.<format>"
-c <component name> -v <version>
```

where

- **ASCET-DIFF.exe** is the argument to start ASCET-DIFF.
- **-f "<path>\<file name>.<format>"** is the file path switch. The file path can be specified absolute or relative to the installation directory.

<format> can be main.amd or – if the file uses AXL format – axl or sxl or zip or an arbitrary extension.

NOTE

The specification of the switch **-f** before the path is optional only if no other switch is used in the command line argument.

Example for relative path:

```
(-f) "..\ASCET-DIFF 6.4\Samples\  
 <file name>.<format>"
```

Example for absolute path:

```
(-f) "C:\Program Files (x86)\ETAS\  
 ASCET-DIFF 6.4\Samples\  
 <file name>.<format>"
```

- **-c <component name>** is the component name switch (optional).

NOTE

The specification of the component name (with or without switch **-c**) is not necessary. See section "Starting Model Viewer without component name" on page 29 for more details.

- **-v <version>** is the version string switch (optional).

2. Press <ENTER>.

The command will be executed and ASCET-DIFF will be invoked in the Model Viewer mode and – if you provided a component name – display the specified component.

Starting Model Viewer without **component name**

If the Model Viewer is started via command line without component name, the following happens, depending on the content of the file:

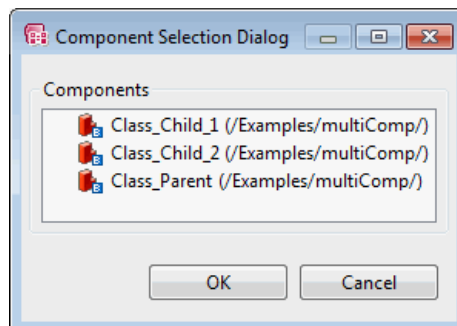
- The file (e.g., `<file>.*1`) contains a single component `<Component>`. ASCET-DIFF opens in Model Viewer mode and displays `<Component>`.
- The file (e.g., `<file>.*2`) contains one parent component `<Parent>` and one or more child components. The parent-child relations are non-recursive. ASCET-DIFF opens in Model Viewer mode and displays `<Parent>`.
- The file (e.g., `<file>.*1`) contains one parent component `<Parent>` and one or more child components. One of the child components, `<Child>`, contains `<Parent>` as a further child (directly or indirectly), i.e. the parent-child relation is recursive.

NOTE

In ASCET, recursive parent-child relations are strictly forbidden. If your model contains such a relationship, an error is issued during code generation.

If you detect a recursive parent-child relation while working with ASCET-DIFF, make sure that it is removed from the original ASCET model.

ASCET-DIFF opens in Model Viewer mode and shows a selection window that displays all components in `<file>.*` that are part of the recursive parent-child relation.



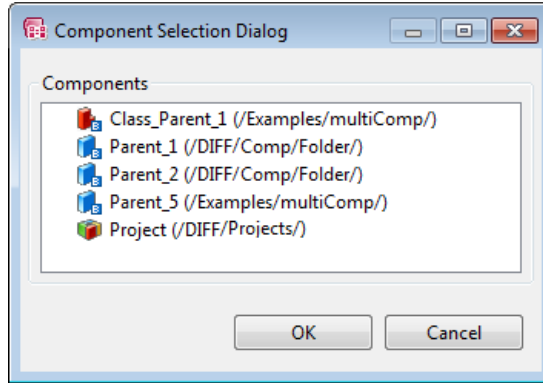
"Components":
 Class_Parent contains
 Class_Child_1,
 Class_Child_1 contains
 Class_Child_2,
 Class_Child_2 contains
 Class_Parent

Select the component you want to view, then click **OK**.

-
1. * = `main.amd` or – if the file uses AXL format – `axl` or `sx1` or `zip` or an arbitrary extension
 2. * = `axl` or `sx1` or `zip` or an arbitrary extension

- The file (e.g., *<file>.*¹*) contains two or more unrelated² components (*<Parent_1>*, *<Parent_2>*, etc), which may contain child components.

ASCET-DIFF opens in Model Viewer mode and shows a selection window that displays the components in *<file>.**.



Select the component you want to view, then click **OK**.

The table summarizes the scenarios.

file	components	action
<i><file>.*¹</i>	<i><Component></i>	<i><Component></i> is displayed
<i><file>.*¹</i>	<i><Parent></i> , <i><Child_1></i> , ...	<i><Parent></i> is displayed
<i><file>.*¹</i>	<i><Parent></i> contains <i><Child></i> , which contains <i><Parent></i>	selection dialog opens
<i><file>.*¹</i>	<i><Parent_1></i> , <i><Parent_2></i> , ...	selection dialog opens

5.2 Starting ASCET-DIFF Model Viewer from Windows Explorer

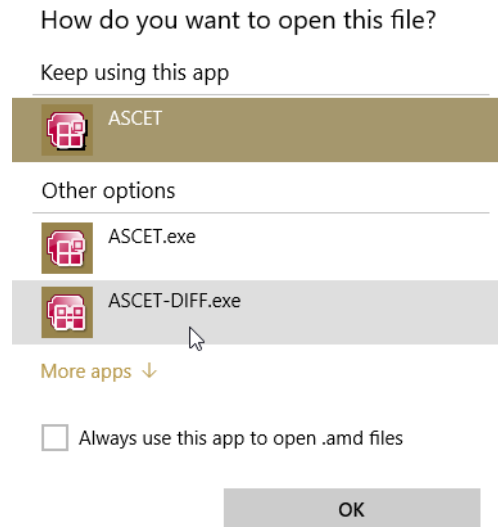
This section describes how to invoke the ASCET-DIFF Model Viewer using the Windows explorer context menu.

To start the Model Viewer via context menu

1. In the Windows file explorer, right-click the file (*<file>.*¹*) you want to view.
2. Select **Open with > Choose another app**.
An app selection window opens.

1. * = ax1 or sx1 or zip or an arbitrary extension
2. i.e. without references from one *.main.amd file to another

3. In that window, select `ASCET-DIFF.exe` and click **OK**.

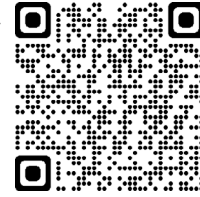


ASCET-DIFF starts in Model Viewer mode and displays the component or opens the "Component Selection" window (see also "Starting Model Viewer without `component name`" on page 29), if necessary.

6 Contact Information

Technical Support

For details of your local sales office as well as your local technical support team and product hotlines, take a look at the ETAS website: www.etas.com/hotlines



ETAS Headquarters

ETAS GmbH

Borsigstraße 24

70469 Stuttgart

Germany

Phone: +49 711 3423-0

Fax: +49 711 3423-2106

Internet: www.etas.com

Index

A		
Add-on to ASCET	20	
enable usage	21	
start	22	
ASCET-DIFF		
enable usage from ASCET	21	
install	10	
path specification	13	
start from ASCET	22	
start from command line	22	
start installation	10	
start standalone variant	20	
uninstall	17	
C		
Command line		
installation	16	
silent installation	16	
start ASCET-DIFF	22	
start Model Viewer	28	
Contact information	32	
E		
ETAS contact information	32	
G		
Grace mode	20	
I		
Installation		
ASCET-DIFF	10	
blocking applications	12	
command line	16	
license agreement	11	
path specification	13	
side-by-side	17	
silent	16	
start	10	
start menu folder	14	
system prerequisites	9	
uninstall ASCET-DIFF	17	
uninstall existing version	14	
without administrator privileges	9	
L		
Licensing		
grace mode	20	
M		
Model Viewer		
start from command line	28	
start from context menu	30	
start without component name	29	
P		
Privacy	5	
		Product liability disclaimer
		5
S		
Safety		
ETAS Safety Advice	5	
intended use	4	
Safety information	5	
Side-by-side installation	17	
silent installation	16	
standalone variant	15	
start	20	
U		
Uninstallation	17	