

## ASCET: Where can I find the output of asdWriteUserDebug



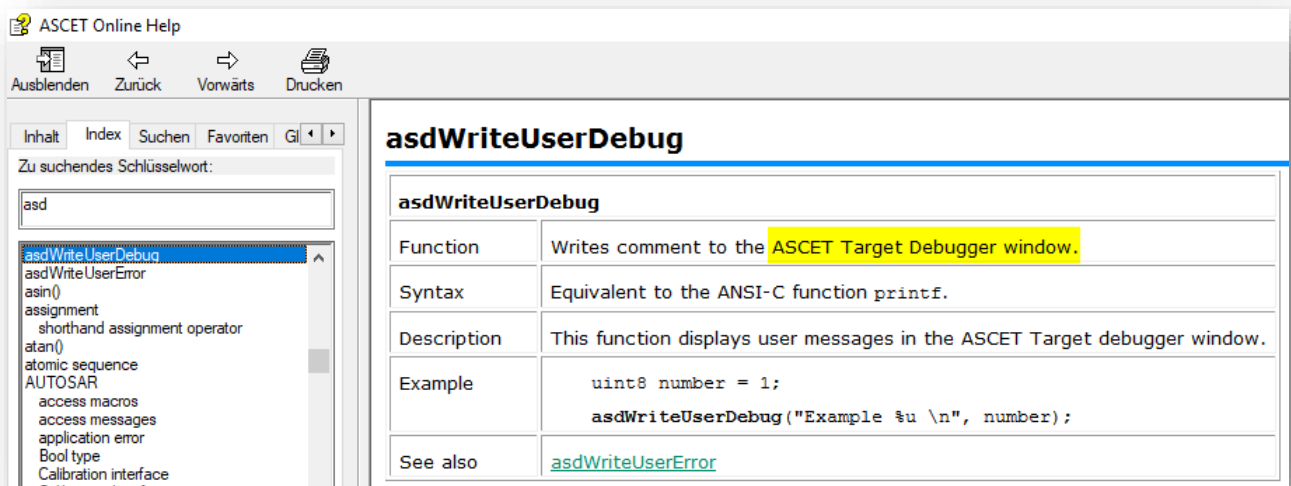
### Question:

- Where can I find the output of `asdWriteUserDebug`?



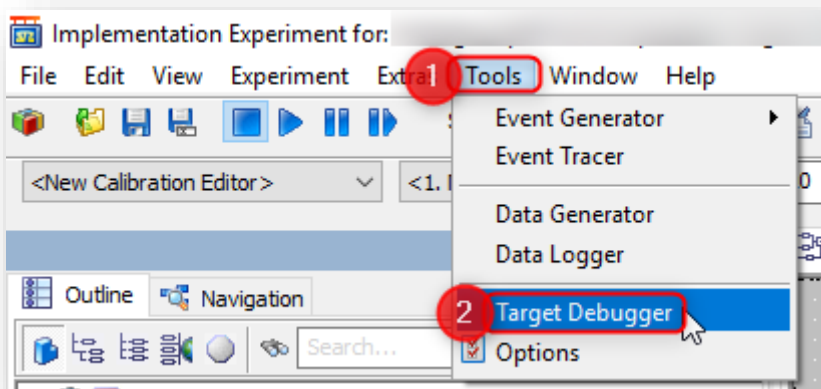
### Answer:

- The macro `asdWriteUserDebug` writes to the **ASCET Target Debugger** window

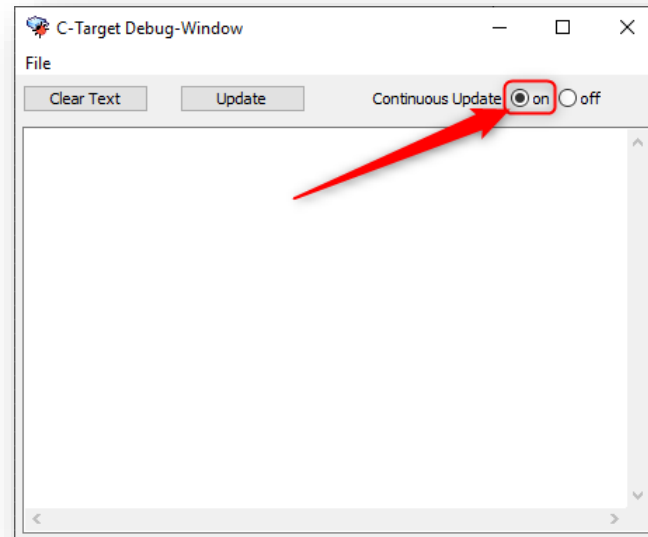


## Where can I find this "ASCET Target Debugger"?

- In **Experiment Environment** → **Menu Bar** → **Tools** → **Target Debugger**



- Hint: At **Continuous Update** → Click **on** option: This will refresh the display continuously



## In case of further questions:

Please feel free to contact our Support Center, if you have further questions.  
Here you can find all information: <http://www.etas.com/en/hotlines.php>

This information (here referred to as „FAQ“) is provided without any (express or implied) warranty, guarantee or commitment regarding completeness or accuracy. Except in cases of willful damage, ETAS shall not be liable for losses and damages which may occur or result from the use of this information (including indirect, special or consequential damages).