

How to make any specific tab visible again in an Eclipse based tool



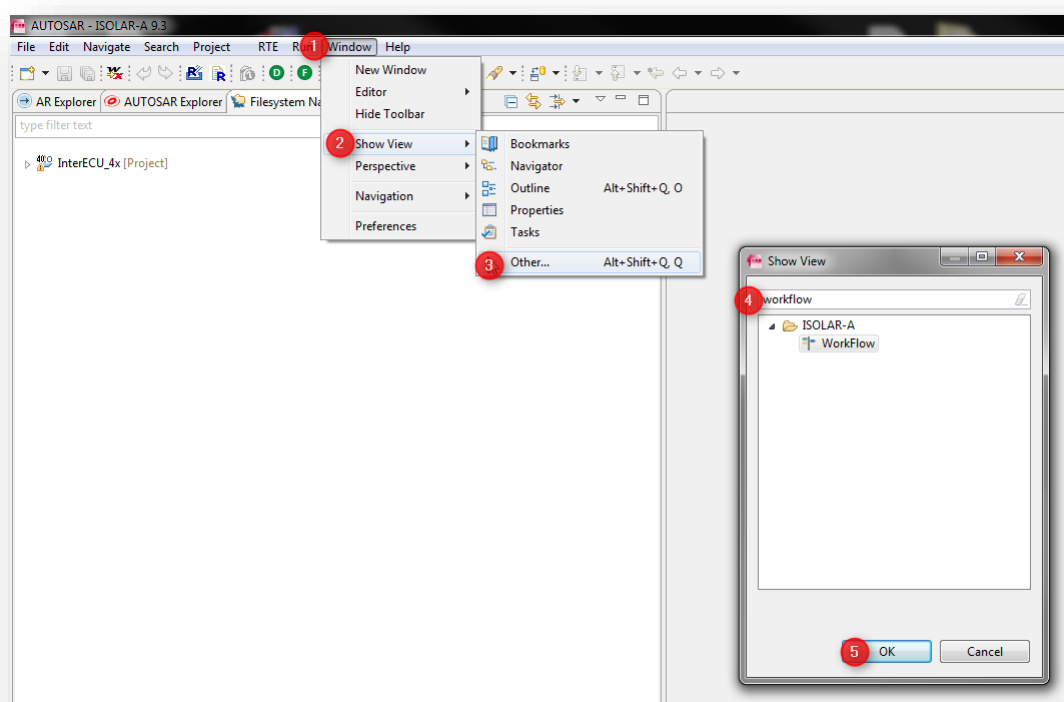
Question

- How to make any tab visible again
- By accident, I made the **Workflow tab invisible**
- How can I make the tab visible again?
- How can I discover what other tabs are available in the tool?



Answer

- In **ISOLAR-A** > Menu bar > **Window** > **Show View** > **Other...** > Type "<name_of_tab>" or search in the tree view > Click **OK**
 - For the example of the Workflow tab:
 - In **ISOLAR-A** > Menu bar > **Window** > **Show View** > **Other...** > Type "workflow" > Click **OK**





Additional information

- These instructions given above work similar in all Eclipse based applications, for example:
 - ASCET 7 ("ASCET DEVELOPER")
 - SCODE-ANALYZER
 - SCODE-CONGRA
 - ISOLAR-A
 - ISOLAR-AB
 - ISOLAR-EVE



Do you still have questions?

- You will find **further FAQ articles** on the ETAS homepage: www.etas.com/en/faq
- **Movies** corresponding to FAQ articles can be found on the [ETAS YouTube channel](#)
- Please feel free to contact our Support Center, if you have further questions.
- Here you can find all information: <http://www.etas.com/en/hotlines.php>

This information (here referred to as „FAQ“) is provided without any (express or implied) warranty, guarantee or commitment regarding completeness or accuracy. Except in cases of willful damage, ETAS shall not be liable for losses and damages which may occur or result from the use of this information (including indirect, special or consequential damages).