



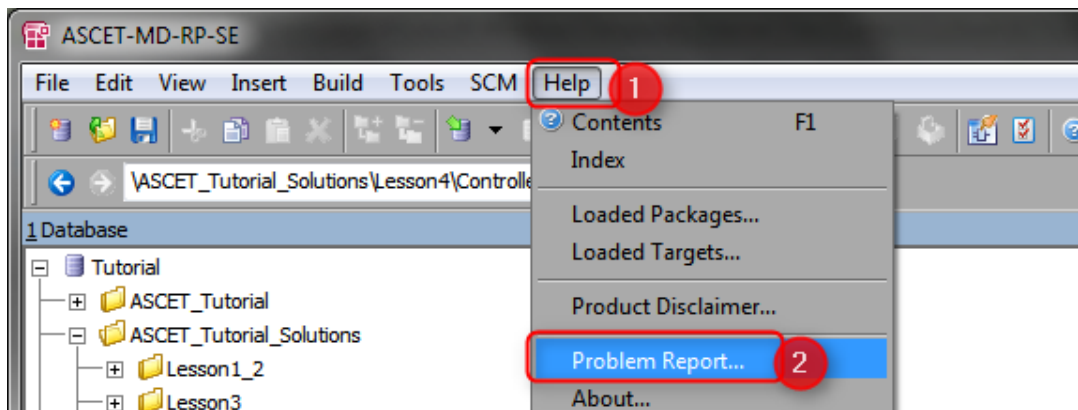
## Question:

- Where to find ASCET log files?



## Answer:

- For ASCET **V7.x** and newer:
  - **<workspace\_directory>/metadata/.log**
    - As for any Eclipse based application, the default location of the log file is the .metadata folder in the workspace directory
- For ASCET **V6.x** and older:
  - **Menu bar > Help > Problem Report...** > All ASCET log files will be packed into a ZIP archive



## In case of further questions:

- You will find further FAQ here: [www.etas.com/en/faq](http://www.etas.com/en/faq)
- Please feel free to contact our Support Center, if you have further questions.
- Here you can find all information: <http://www.etas.com/en/hotlines.php>

This information (here referred to as „FAQ“) is provided without any (express or implied) warranty, guarantee or commitment regarding completeness or accuracy. Except in cases of willful damage, ETAS shall not be liable for losses and damages which may occur or result from the use of this information (including indirect, special or consequential damages).