

Block Diagram Editor - Image cropped at the bottom and on the right side

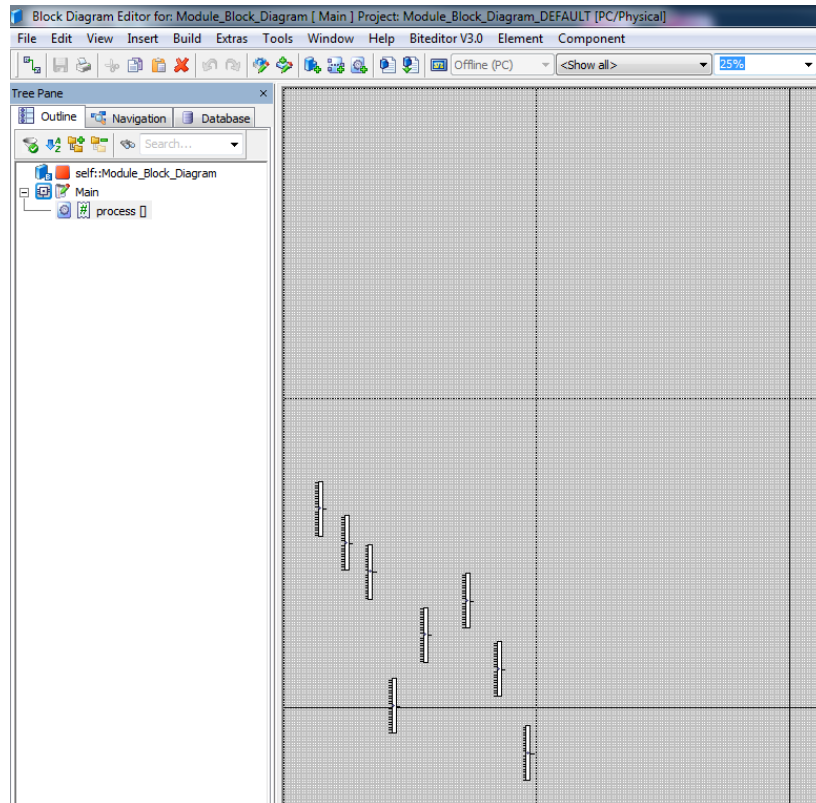


### Question:

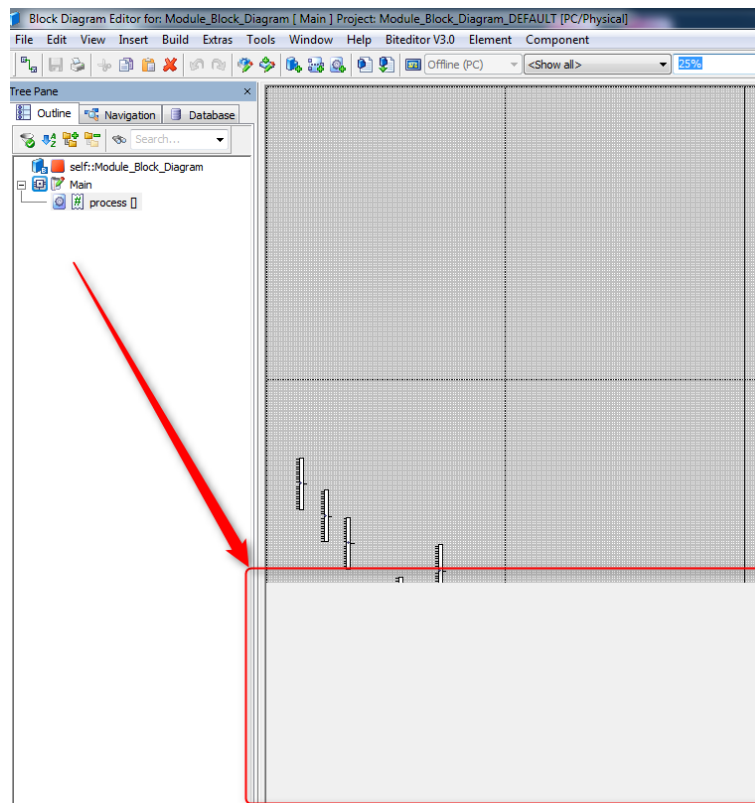
---

- Block Diagram Editor - image cropped at the bottom and on the right side
- Missing part of block diagram
- I cannot scroll down to the bottom of block diagram
- Block diagram displayed incomplete
- I am missing some parts in block diagram
- Some parts of the diagram are invisible

- Example:
  - Complete diagram:



- Incomplete diagram:

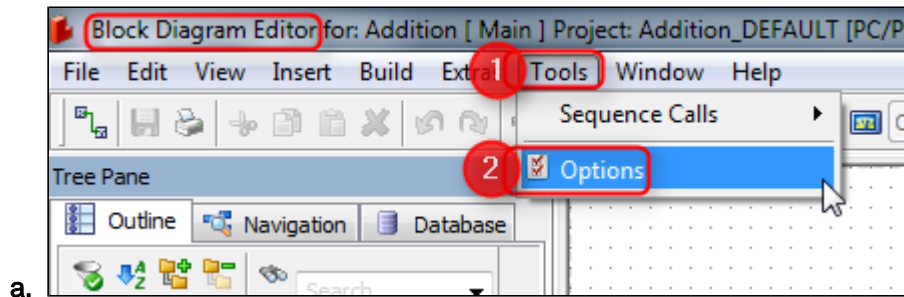




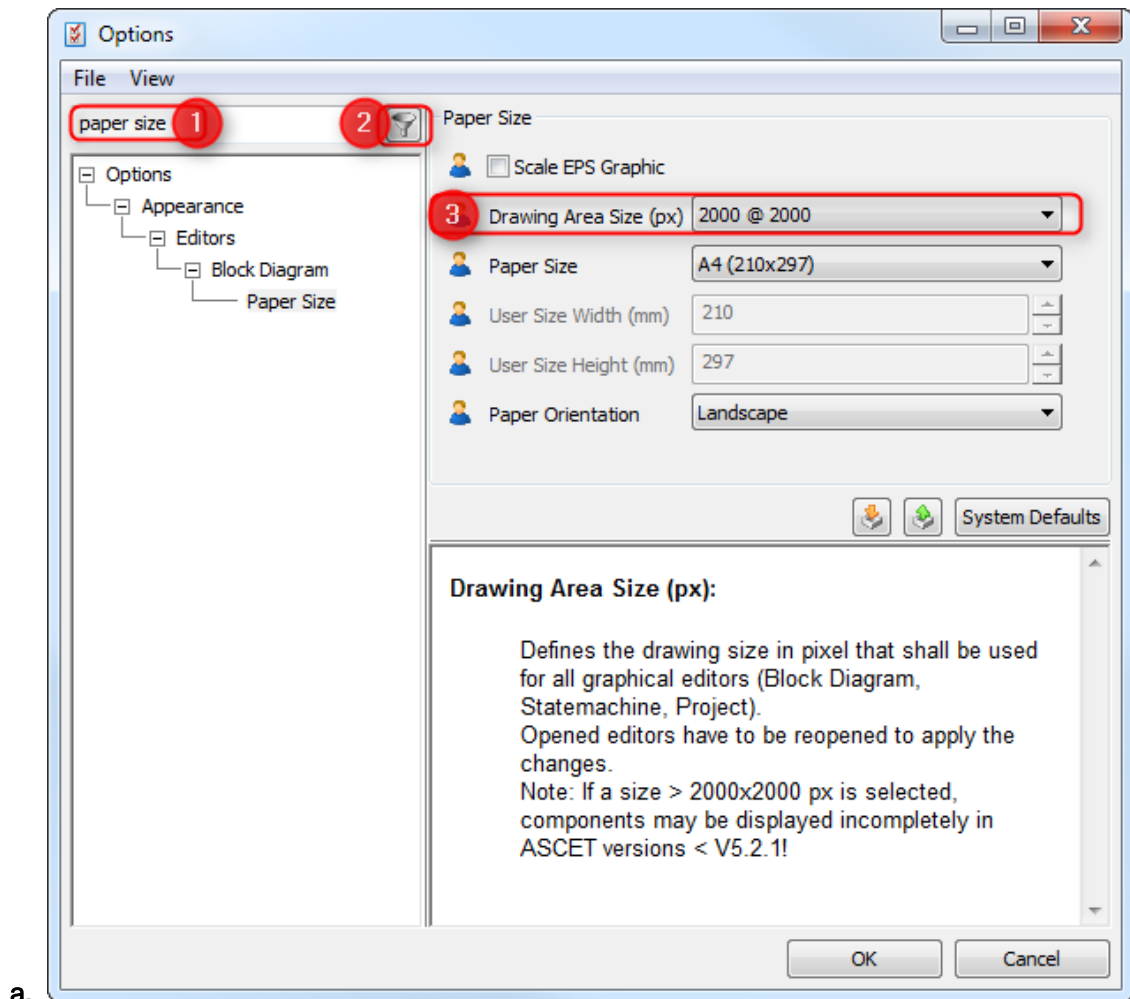
## Answer:

Play with option **Drawing Area Size (px)**

1. In **ASCET > Block Diagram Editor > Menu bar > Tools > Options**



2. In dialog **Options**: In search text field: type "paper size", then click button **Filter**



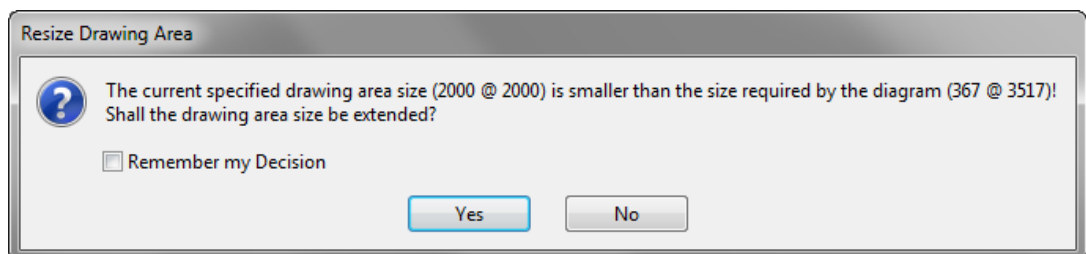
3. Change the value, for example to "5000 @ 5000"
4. Click **OK** button
5. Restart ASCET to let the new setting take effect



## Additional information:

- Default value for **Drawing Area Size (px)** is **2000 @ 2000**
- The behavior with the cropped block diagram occurs when the model was created with higher values
- Example:
  - Model was created with Drawing Area Size (px) set to 10.000 @ 10.000
  - Another user opens the model (with his Drawing Area Size (px) set to default values, 2000 @ 2000)
- When you open the model in block diagram editor, there can happen 3 different things:

### 1. There will be the dialog **Resize Drawing Area**



- Click **Yes** and the block diagram will be displayed complete

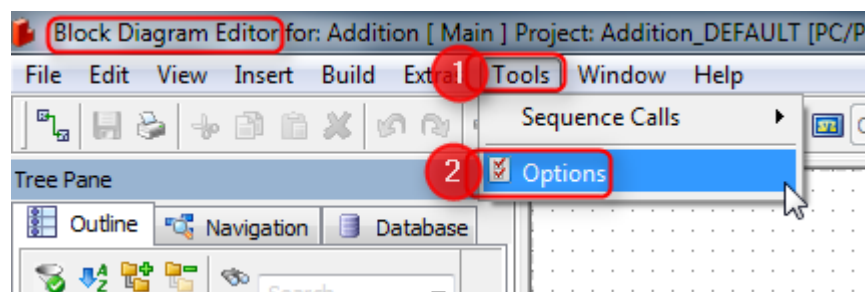
### 2. In the same dialog:

- Click **No** and the block diagram will be cropped

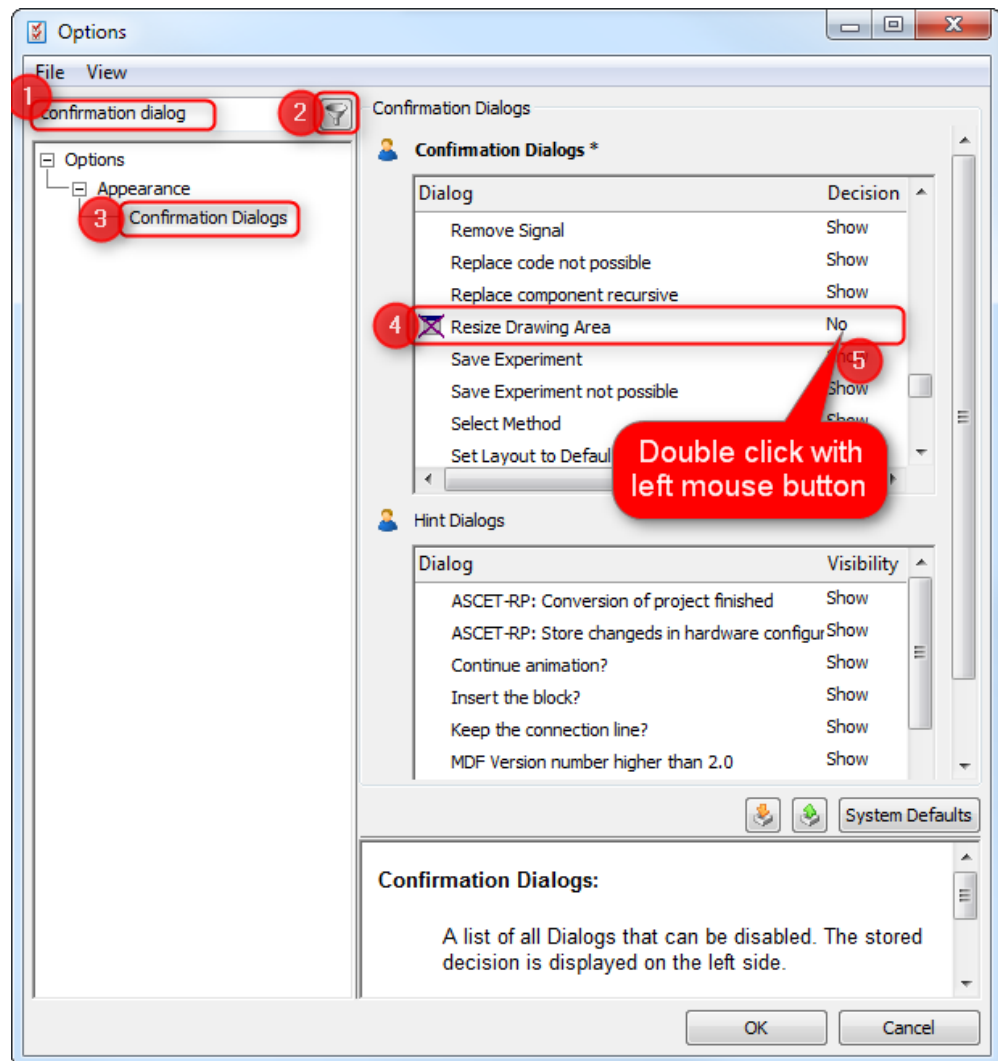
### 3. There is **no dialog**

- This happens when you checked the **Remember my Decision** option in the past
- To change this:

- In **ASCET > Block Diagram Editor > Menu bar > Tools > Options**



- In dialog **Options**:



- In search text field: type "confirmation dialogs"
- Click button **Filter**
- On the right side, in list **Confirmation Dialogs**: Scroll down to **Resize Drawing Area**
- Double click with left mouse button on **No**
- A drop down list appears with 3 options: Show, Yes, No



- Click on **Show**
- Finally, click **OK** button



## In case of further questions:

---

- You will find further FAQ here: [www.etas.com/en/faq](http://www.etas.com/en/faq)
- Please feel free to contact our Support Center, if you have further questions.
- Here you can find all information: <http://www.etas.com/en/hotlines.php>

This information (here referred to as „FAQ“) is provided without any (express or implied) warranty, guarantee or commitment regarding completeness or accuracy. Except in cases of willful damage, ETAS shall not be liable for losses and damages which may occur or result from the use of this information (including indirect, special or consequential damages).