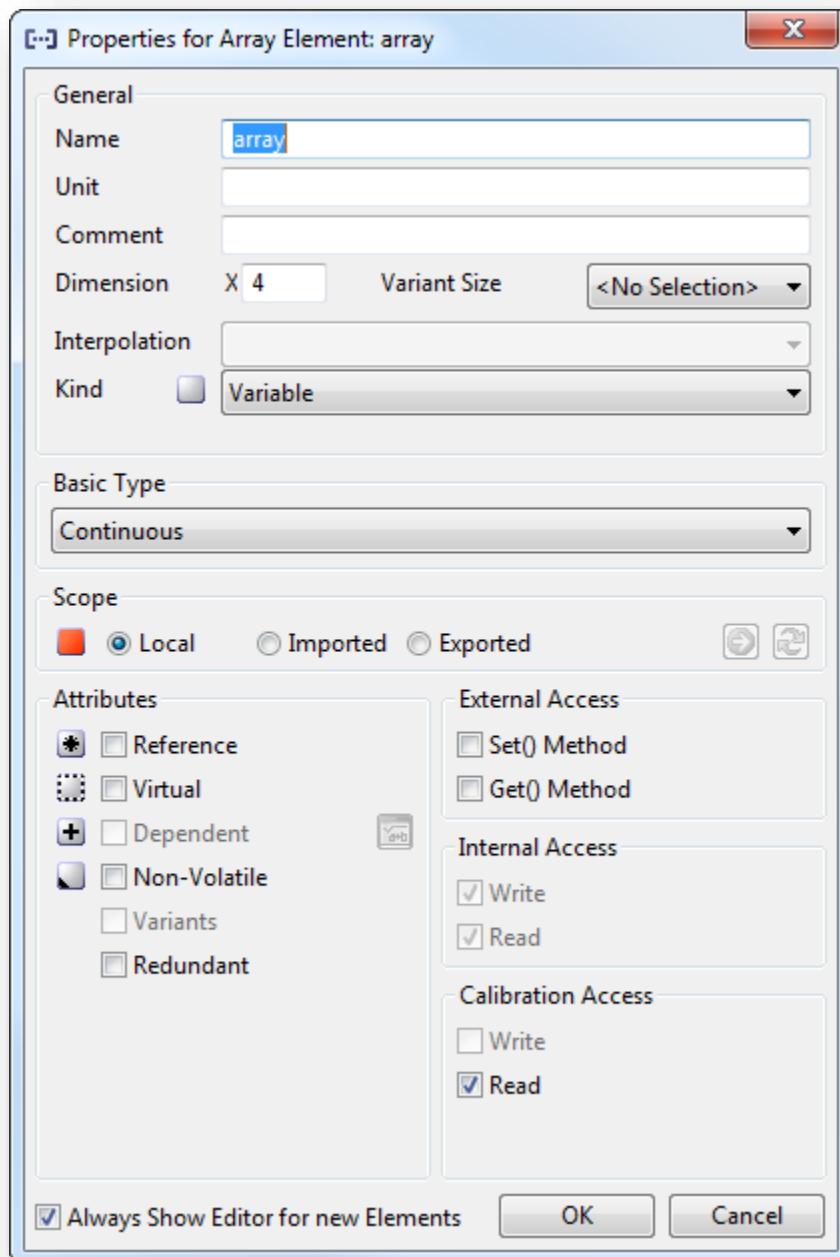


## ASCET: Do not show Properties dialog when a new element is created



### Question:

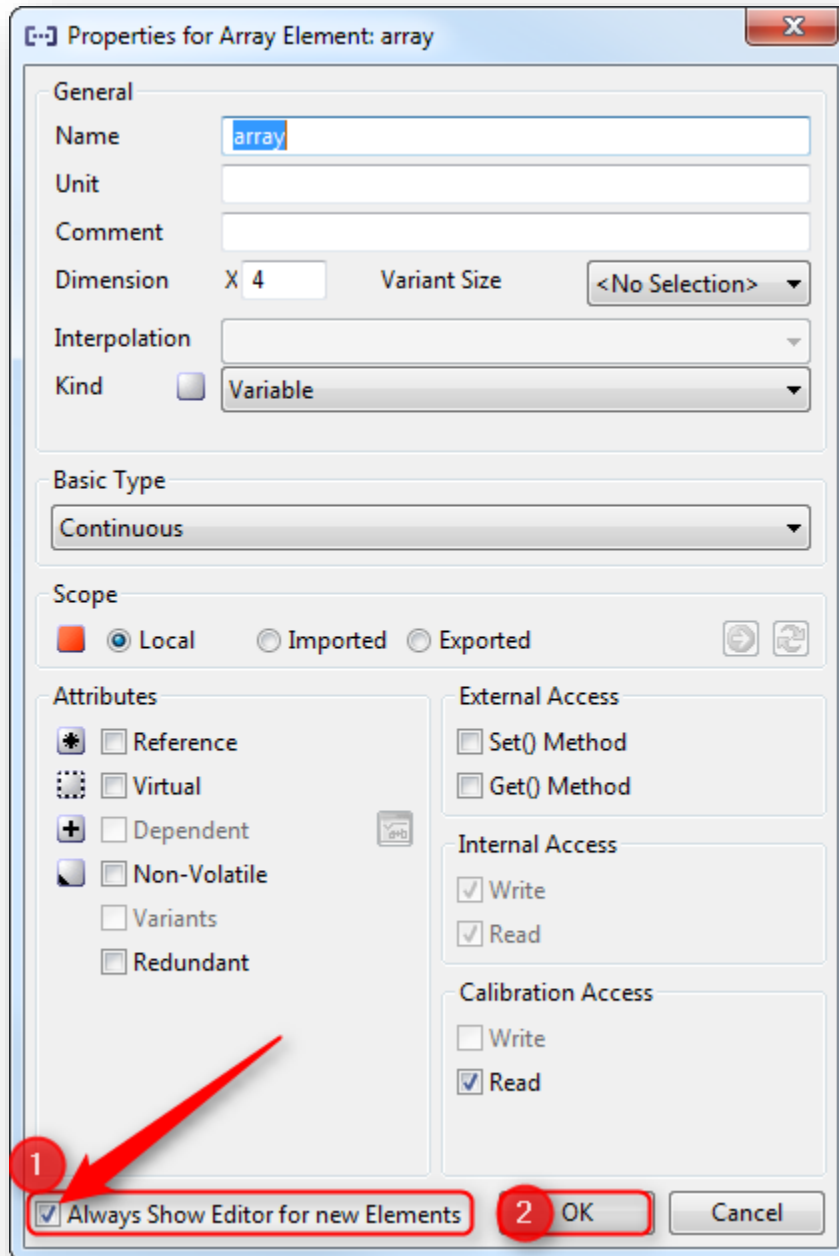
- How to keep off Properties dialog to show up every time a new element is created?
- Every time I create an element the dialog **Properties for ...** (for the newly created element) pops up:



- How to deactivate this behavior?
- Do not open the properties editor upon an element's creation
- How can I hide this dialog?
- When I check the option **Always Show Editor for new Elements:**
  - How can revert this setting?

**Answer:**

- If you do not want to open the properties editor upon an element's creation:
  1. Deactivate the **Always show Editor for new Elements** option at the bottom of the editor.
  2. Click on **OK** button

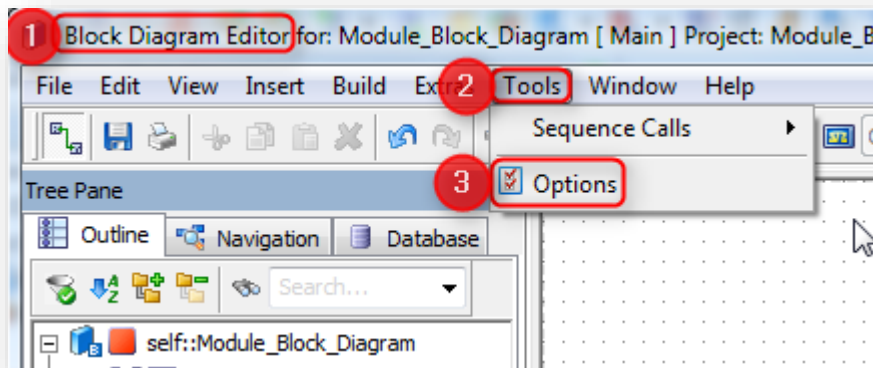




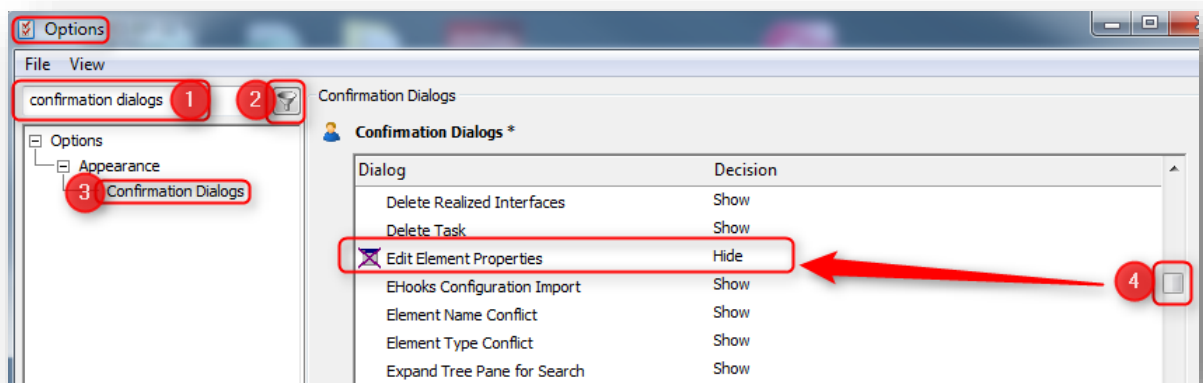
### Additional information:

- You can revoke this setting in the ASCET options window, Confirmation Dialogs node

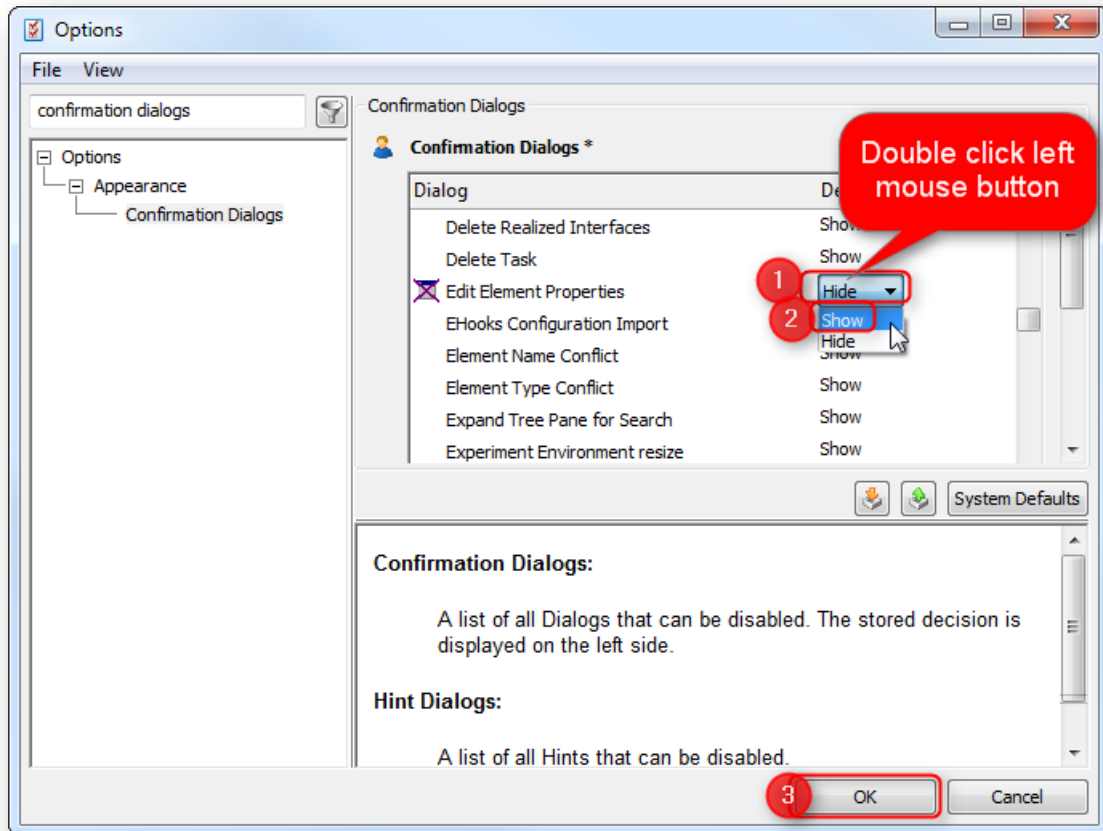
- In **ASCET: Block Diagram Editor > Menu bar > Tools > Options**



- In dialog **Options**:
- In **search text field**: type "confirmation dialogs"
- On the **filter** icon/button: left mouse button click
- Under **Options > Appearance**: on **Confirmation Dialogs**: Left mouse button click
- On the left side in table **Confirmation Dialogs**: Scroll down until there is **Edit Element Properties**



- In table column **Decision**:
- Move mouse pointer on **Hide**: left mouse button double click
- On **Show**: left mouse button click



10. Click on **OK** button



### Do you still have questions?

- You will find **further FAQ articles** on the ETAS homepage: [www.etas.com/en/faq](http://www.etas.com/en/faq)
- **Movies** corresponding to FAQ articles can be found on the [ETAS YouTube channel](#) as well
- Please feel free to contact our Support Center, if you have further questions.
- Here you can find all information: <http://www.etas.com/en/hotlines.php>

This information (here referred to as „FAQ“) is provided without any (express or implied) warranty, guarantee or commitment regarding completeness or accuracy. Except in cases of willful damage, ETAS shall not be liable for losses and damages which may occur or result from the use of this information (including indirect, special or consequential damages).