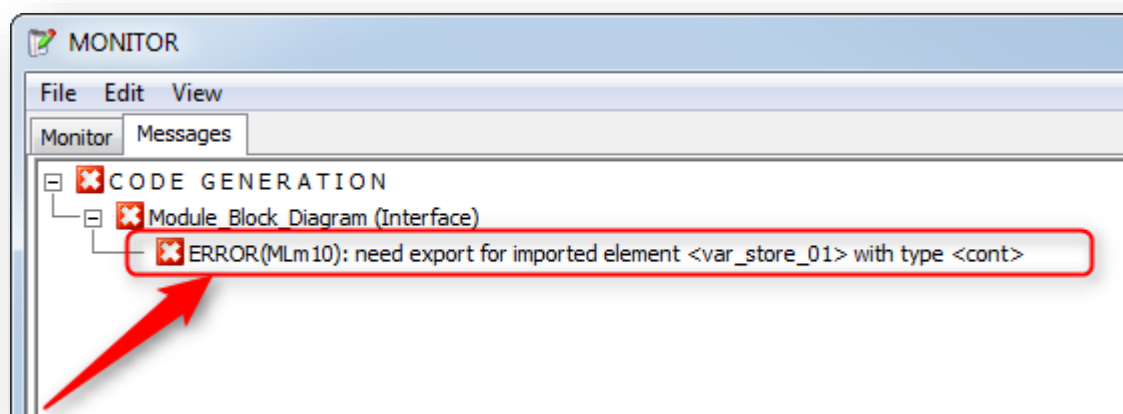


ASCET ERROR(MLm10): need export for imported element <message> with type <cont>



Question

- I want to generate code from my ASCET model but receive following error:
- *ERROR(MLm10): need export for imported element <message> with type <cont>*



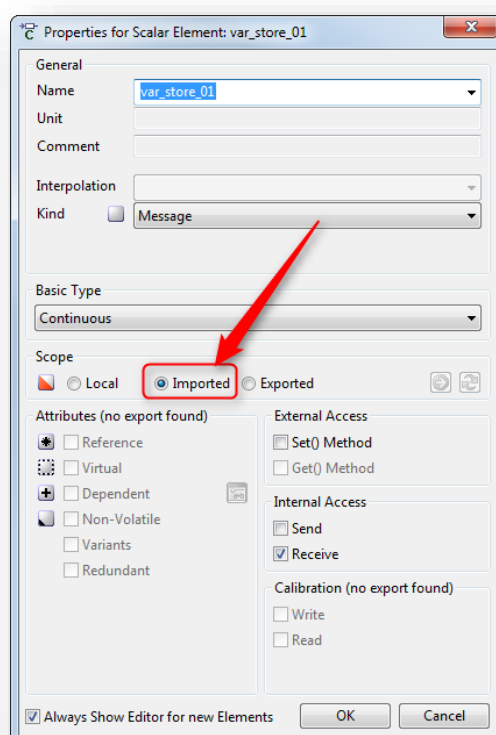
- How to get rid of this error message?



Answer

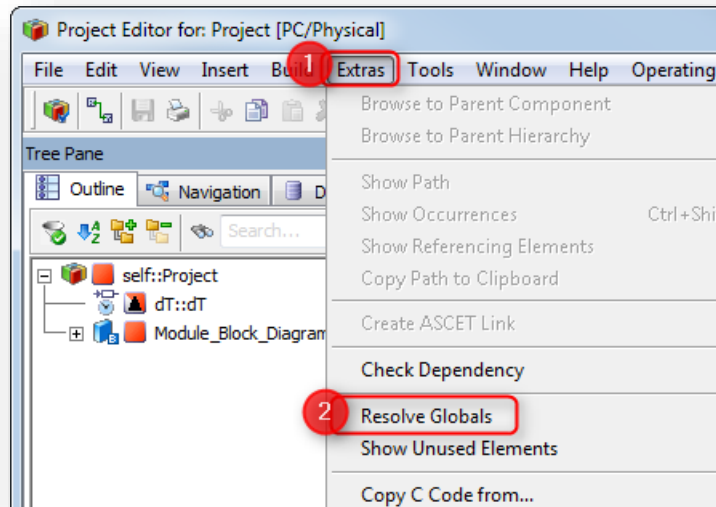
Root Cause

- There are **imported messages** defined but no **exported** message
- For example:

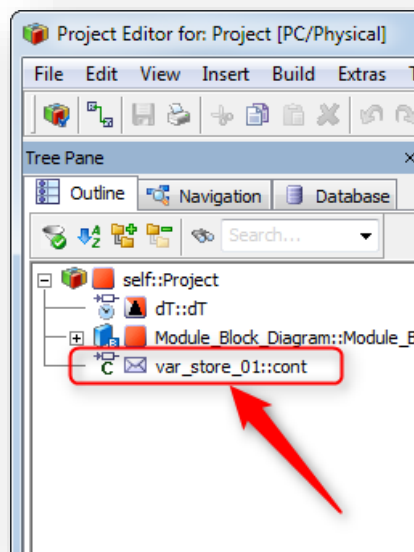


Solution

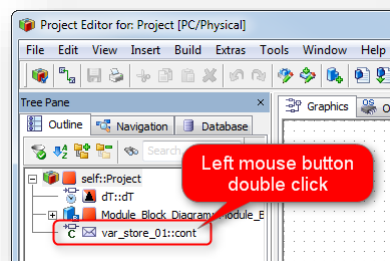
- In **Project Editor** → Menu bar → **Extras** → **Resolve Globals**



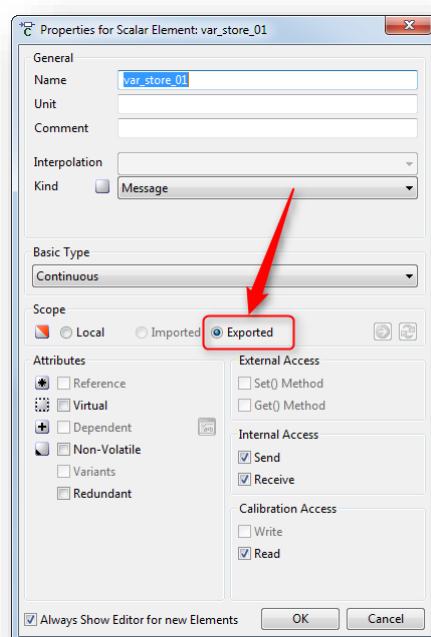
- Result:
 - A dummy variable is created (as **exported** message)



- Check the scope of this variable: On variable, left mouse button double click

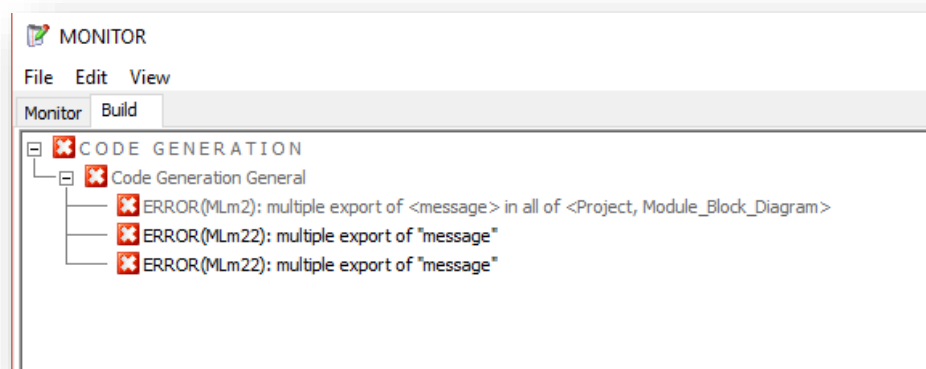


- In dialog **Properties for Scalar Element** in Panel **Scope** → **Exported** is selected:



Additional information

- There are 2 related error message in ASCET (when there is more than 1 export):
ERROR(MLm2): multiple export of ... in all of <..._DEFAULT, ...>
ERROR(MLm22): multiple export of ...



- Please see the according FAQ article under:

https://www.etas.com/download-center-files/products_ASCET_Software_Products/faq_558326624_en_ascet_code_generation_error_ml_m2_multiple_export_of.pdf



Do you still have questions?

- You will find **further FAQ articles** on the ETAS homepage: www.etas.com/en/faq
- **Movies** corresponding to FAQ articles can be found on the [ETAS YouTube channel](#)
- Please feel free to contact our Support Center, if you have further questions.
- Here you can find all information: <http://www.etas.com/en/hotlines.php>

This information (here referred to as „FAQ“) is provided without any (express or implied) warranty, guarantee or commitment regarding completeness or accuracy. Except in cases of willful damage, ETAS shall not be liable for losses and damages which may occur or result from the use of this information (including indirect, special or consequential damages).