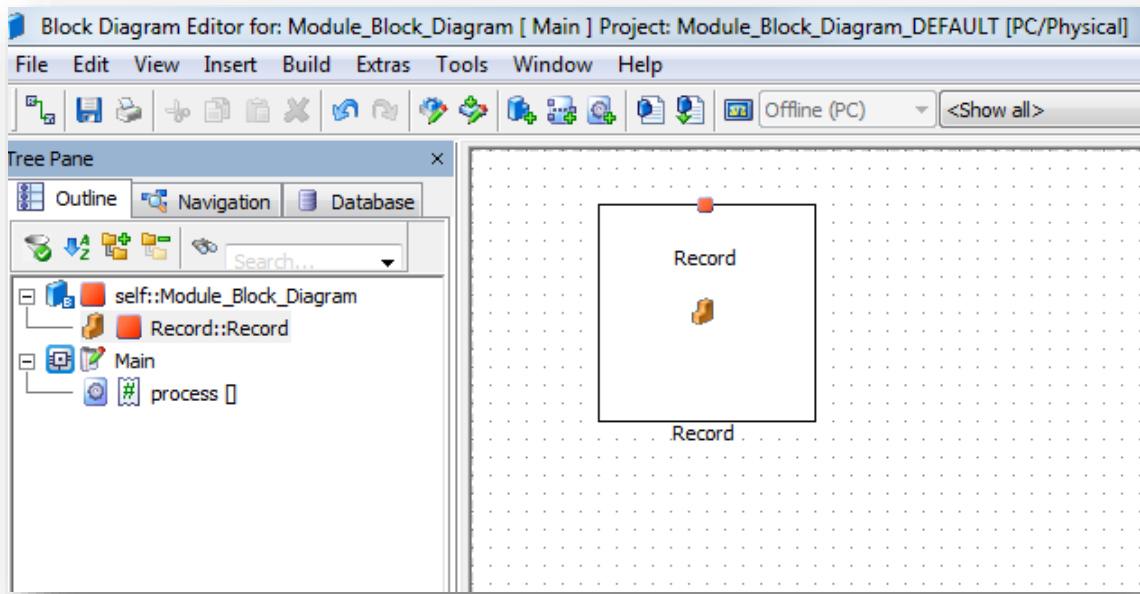


ASCET - Set and Get value of element of C structure data type

? Question:

- I am having a requirement which requires generated .c file to set/get value of an element of a C structure data type
- For example: a record

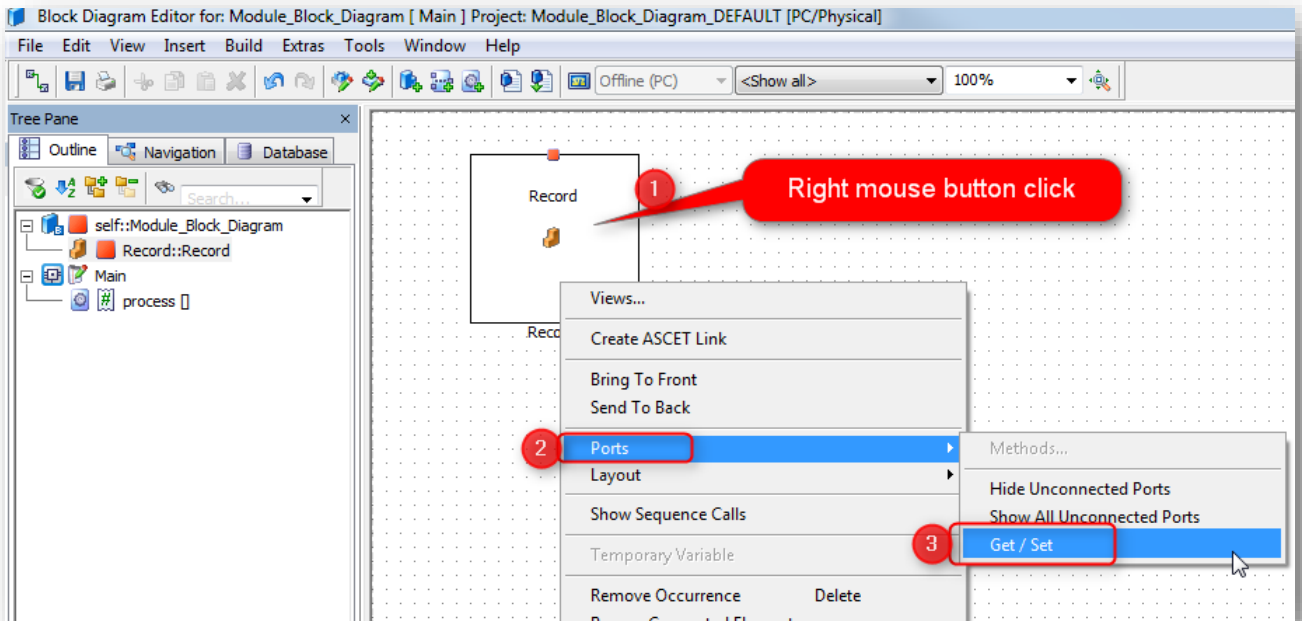


- Is there any way in ASCET to configure **get and set method** for this data type?

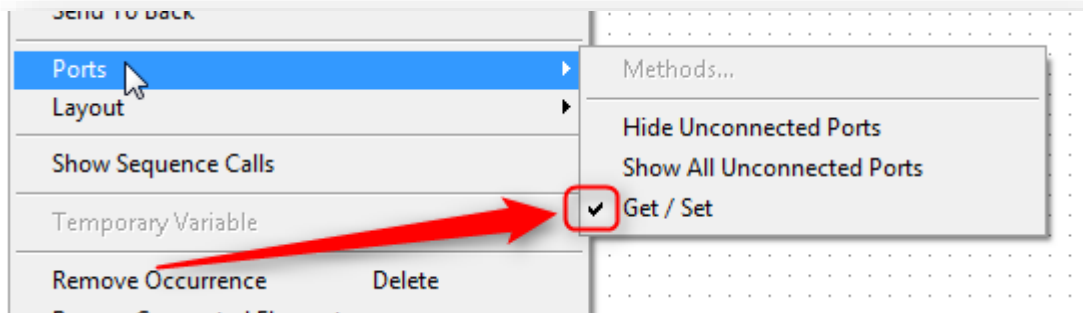
**Answer:**

The get and set ports of a record for example are activated like this:

- In **ASCET > Block Diagram Editor**: Move mouse pointer to block element
- Right mouse button click
- On **Ports**: Left mouse button click

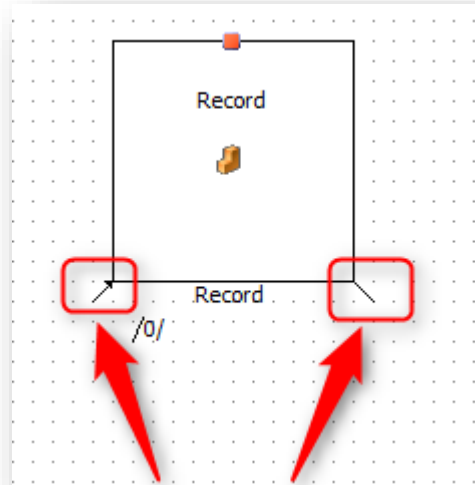


- Make sure that there is a **check mark** on the left hand side of **Get/ Set**



- If there is no check mark on the left hand side of **Get/ Set**:
 - Move mouse pointer on **Get/ Set** and click left mouse button > Now, there should be a check mark on the left hand side of **Get/ Set**

- The ports are shown as diagonal lines in the graphical block



Do you still have questions?

- You will find **further FAQ articles** on the ETAS homepage: www.etas.com/en/faq
- **Movies** corresponding to FAQ articles can be found on the [ETAS YouTube channel](#) as well
- Please feel free to contact our Support Center, if you have further questions.
- Here you can find all information: <http://www.etas.com/en/hotlines.php>

This information (here referred to as „FAQ“) is provided without any (express or implied) warranty, guarantee or commitment regarding completeness or accuracy. Except in cases of willful damage, ETAS shall not be liable for losses and damages which may occur or result from the use of this information (including indirect, special or consequential damages).