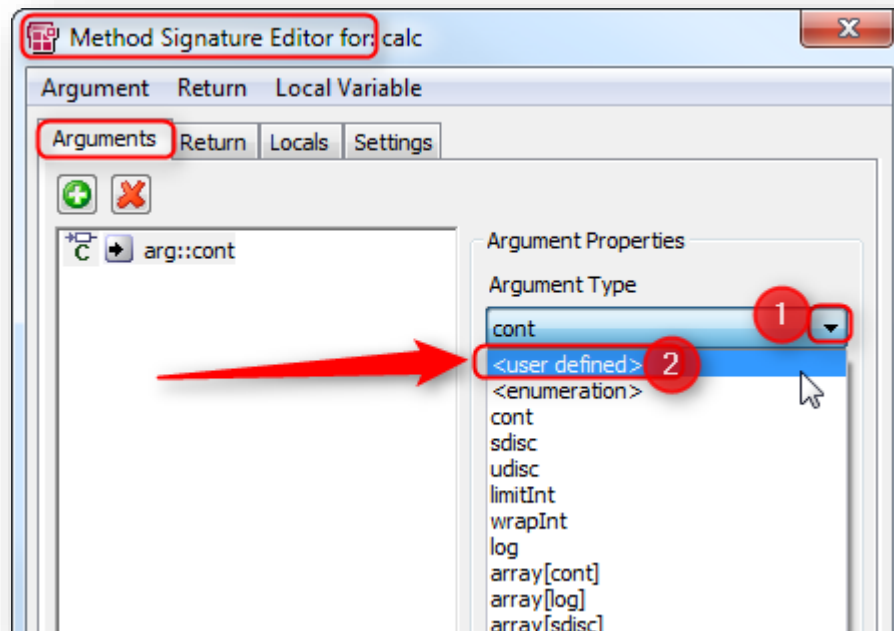


ASCET: Define and use a user defined type

? Question:

- I would like to assign a user defined type for a method return type and argument

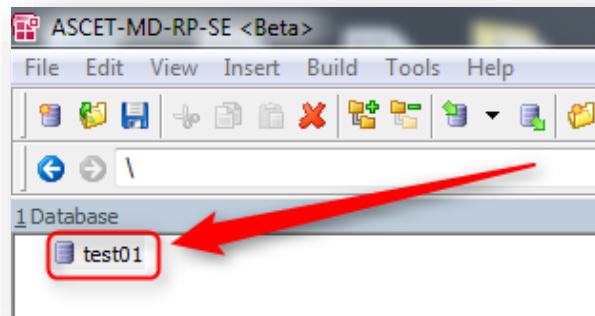


- In ASCET there is an option to choose the user defined type
- But looking for definition: how to define a user defined type?

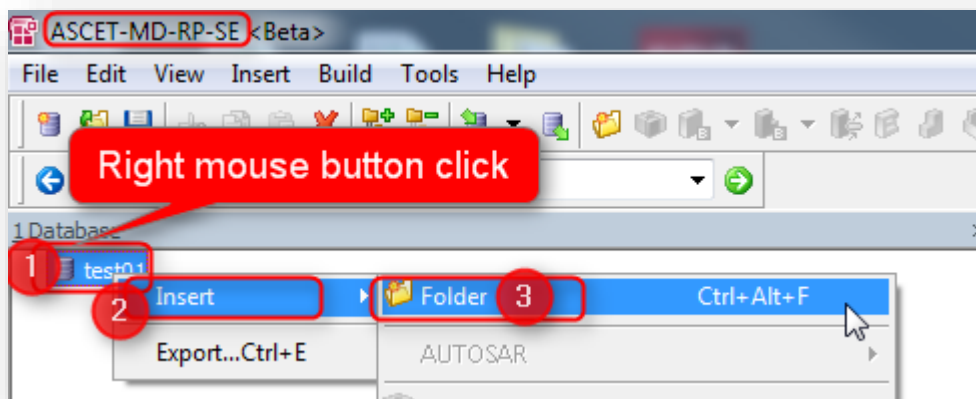
**Answer:**

Following is a step by step walk through creation and usage of a user defined data type in ASCET

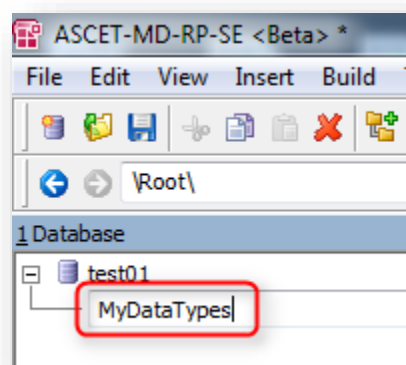
1. For this example, we start with a newly created empty database (named "test01")



2. Move mouse pointer to the database ("test01")
3. **Right** mouse button click, then move mouse pointer over **Insert**, and then left mouse button click on **Folder**

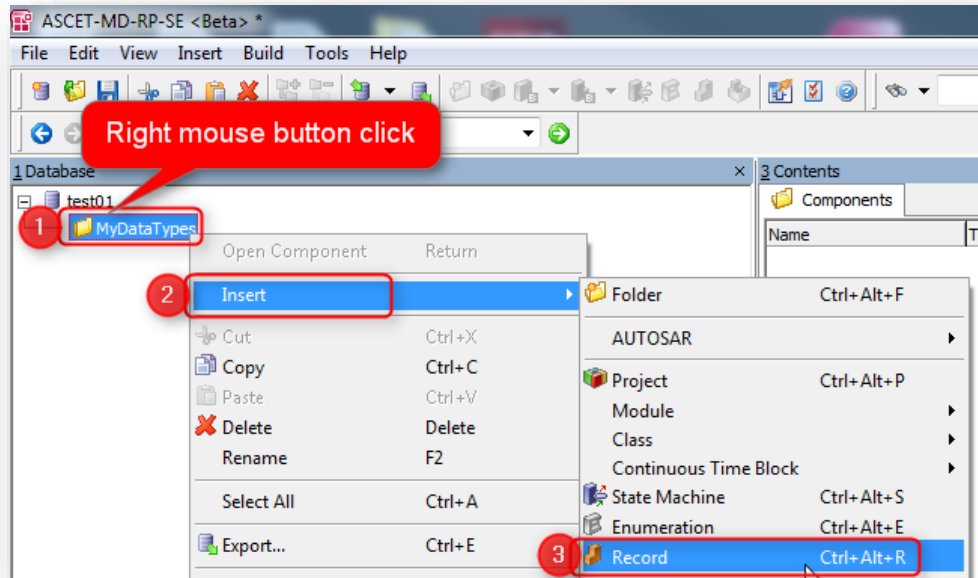


4. Type a meaningful name for the newly created folder (we use "MyDataTypes" here)



Create a user defined type

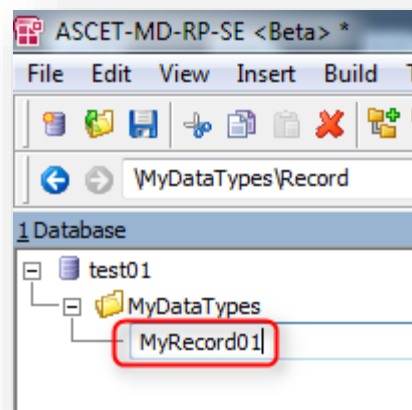
5. Create a user defined type:
 1. Move the mouse pointer on the newly created folder
 2. On folder: right mouse button click > **Insert** > **Record**



3. Remarks:

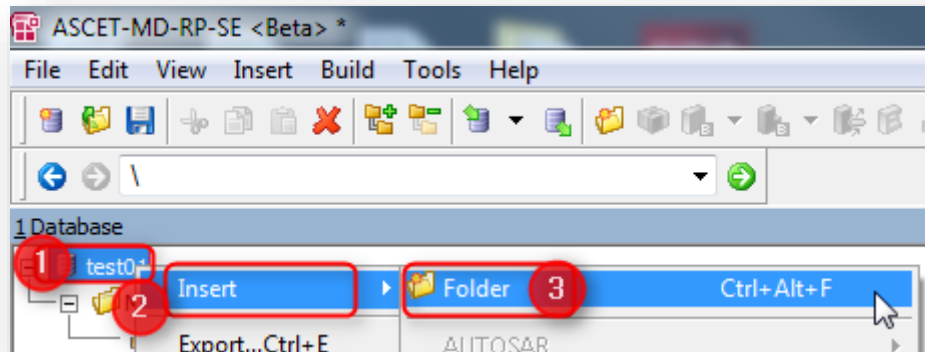
- There are several options here like **Class**, **Enumeration** or **Record**
- To keep this article simple we will just use one
- We use **Record** in this example
- Of course, it is possible to use several user defined types at the same time

6. Type a name for the newly created record (we use "MyRecord01")



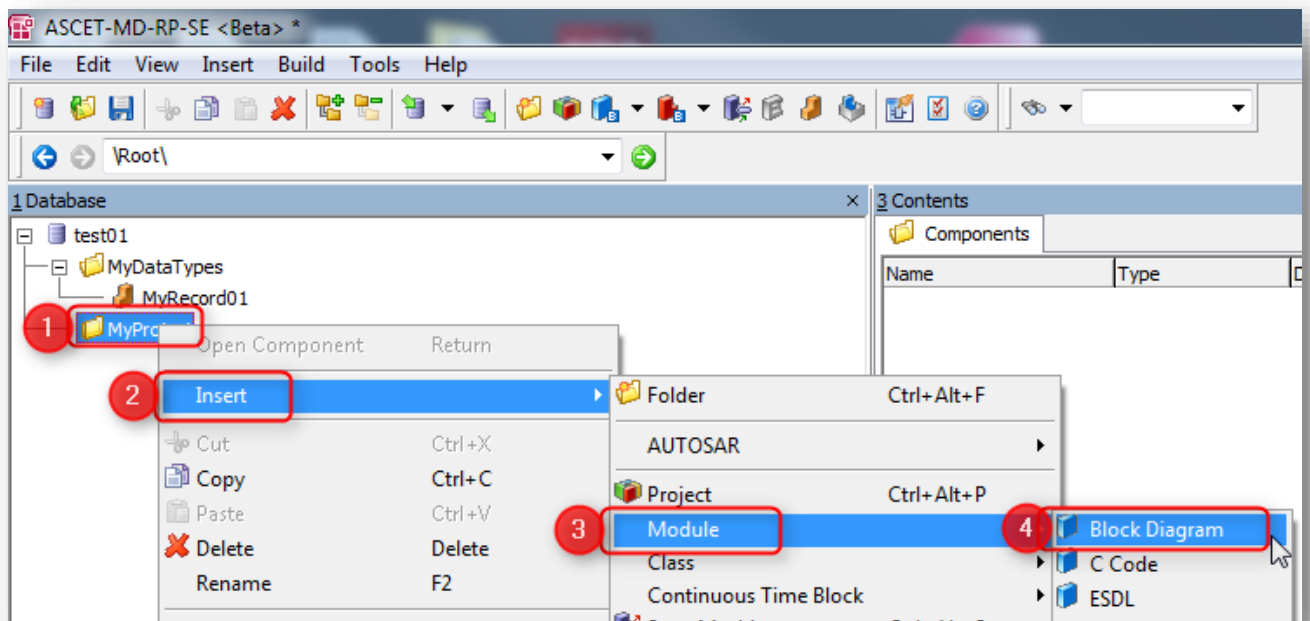
Insert a user defined type:

7. Now, create a folder for the ASCET model
 1. Move mouse pointer to the database ("test01")
 2. **Right** mouse button click, then move mouse pointer over **Insert**, and then left mouse button click on **Folder**

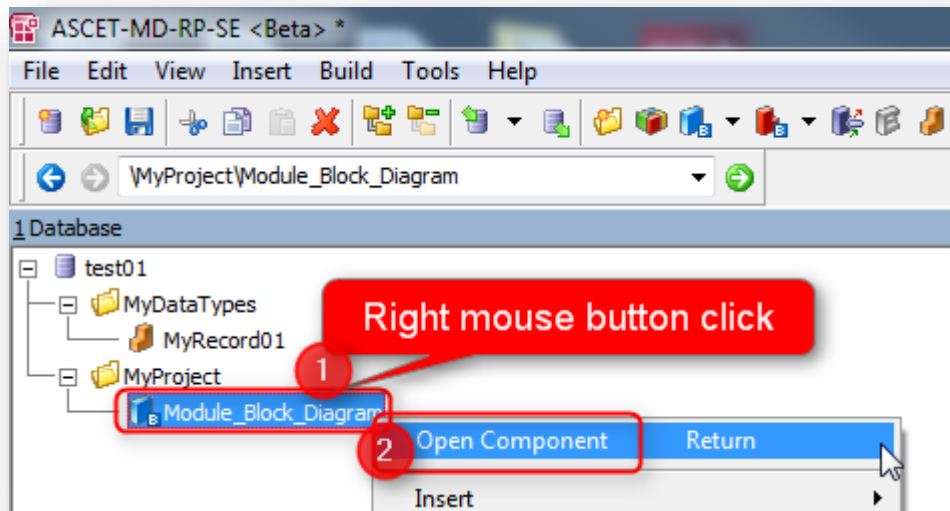
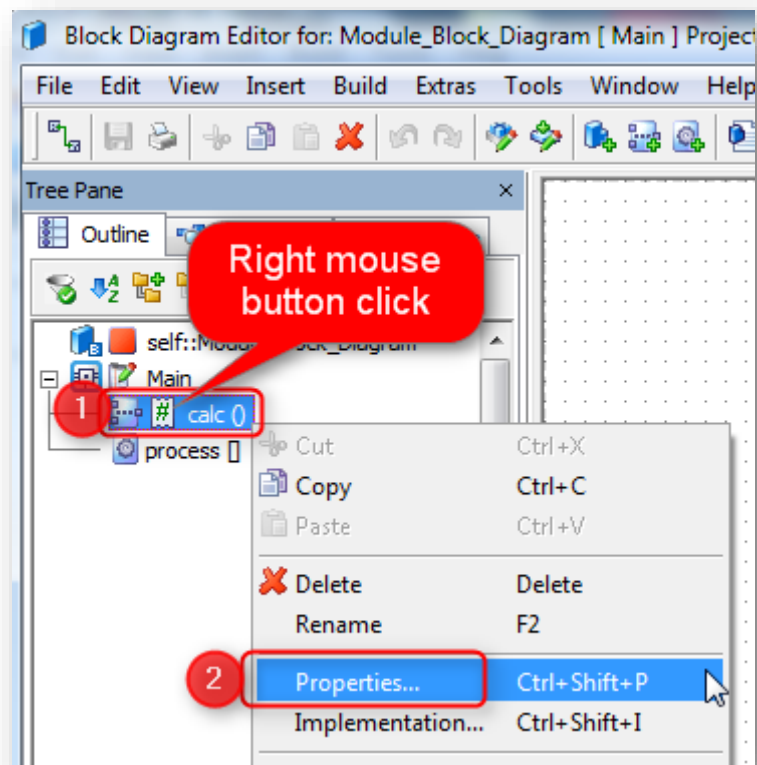


3. Type a name for the project (we use "MyProject")

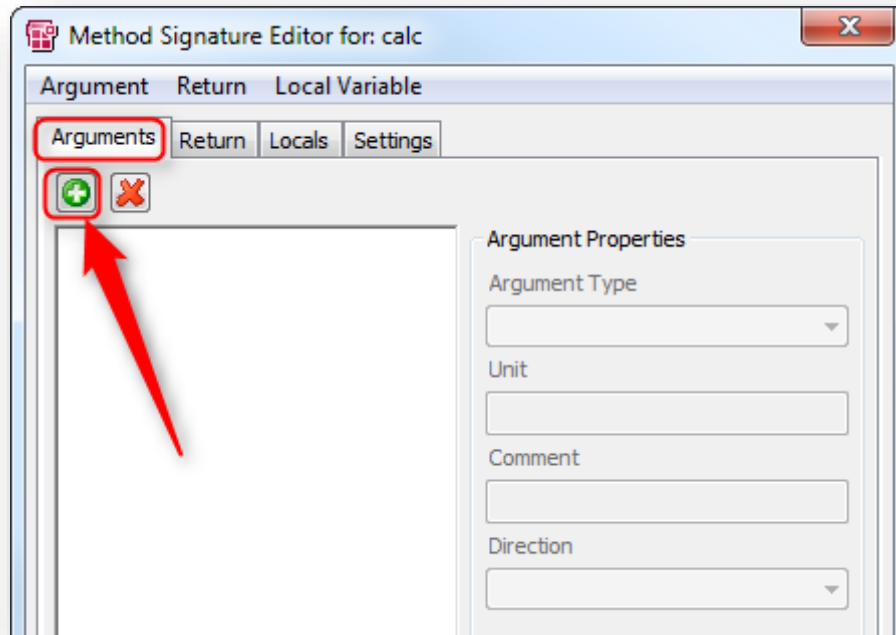
8. On the newly created project: Right mouse button click > **Insert > Module > Block Diagram**



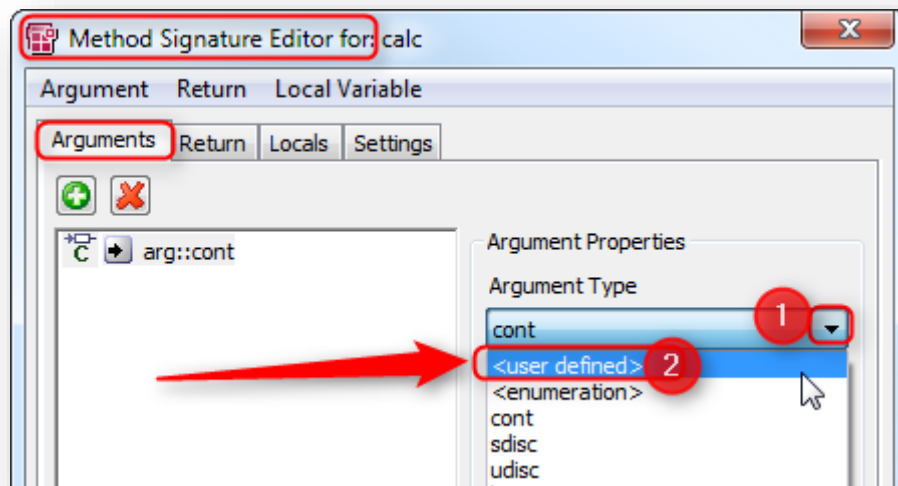
9. Open Block Diagram Editor

10. Under **Main** on <method_name>: Right mouse button click > **Properties...**

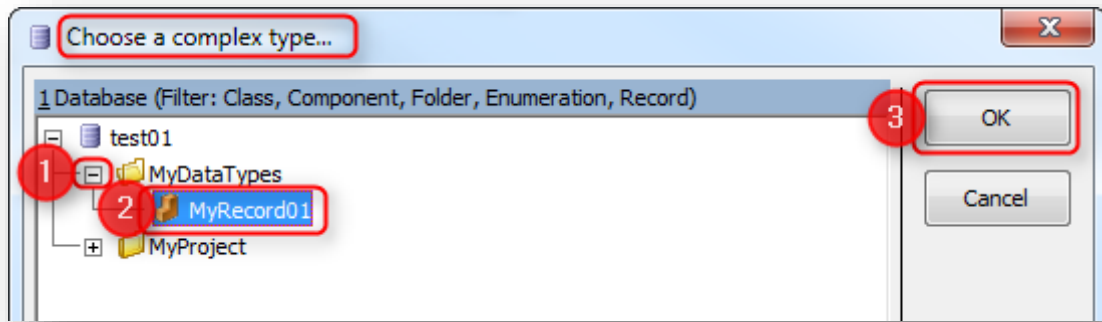
11. Dialog **Method Signature Editor for: <method_name>** opens
12. On tab **Arguments**: Click on white plus symbol on green circle



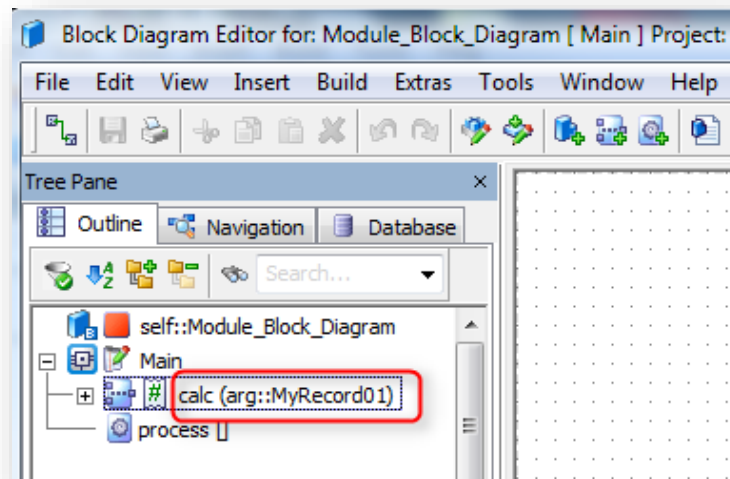
13. On panel **Argument Properties**: at field **Argument Type**: click on black triangle
14. Click on **<user defined>**



15. In Dialog **Choose a complex type...**: Select user defined type, and click **OK** button



16. In **Block Diagram Editor**: method call is displayed with user defined data type as argument



Do you still have questions?

- You will find **further FAQ articles** on the ETAS homepage: www.etas.com/en/faq
- **Movies** corresponding to FAQ articles can be found on the [ETAS YouTube channel](#) as well
- Please feel free to contact our Support Center, if you have further questions.
- Here you can find all information: <http://www.etas.com/en/hotlines.php>

This information (here referred to as „FAQ“) is provided without any (express or implied) warranty, guarantee or commitment regarding completeness or accuracy. Except in cases of willful damage, ETAS shall not be liable for losses and damages which may occur or result from the use of this information (including indirect, special or consequential damages).