

Test ASCET web services (with "SoapUI")



Question:

- I want to consume a web service but it does not seem to work
- Is there a way to test if web services are working correctly?
- How to test a web service?
- How to trouble shoot web service issues?

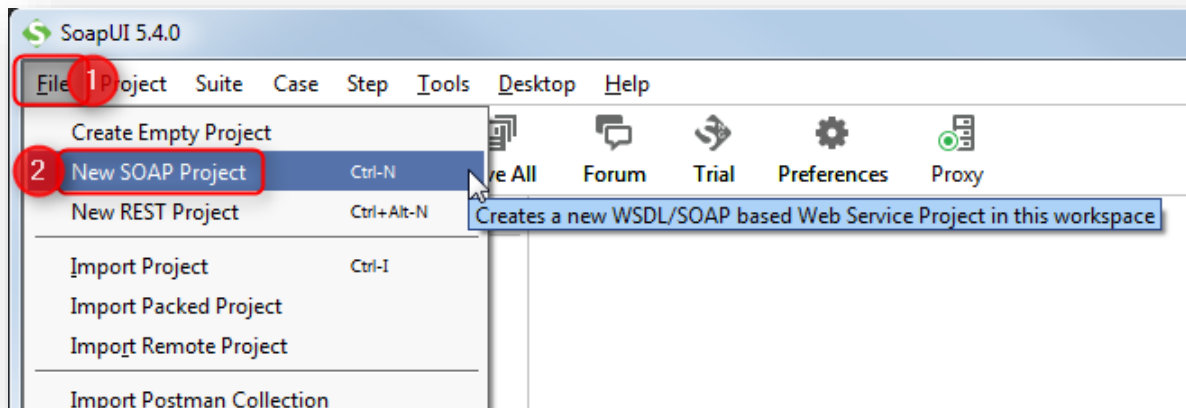


Answer:

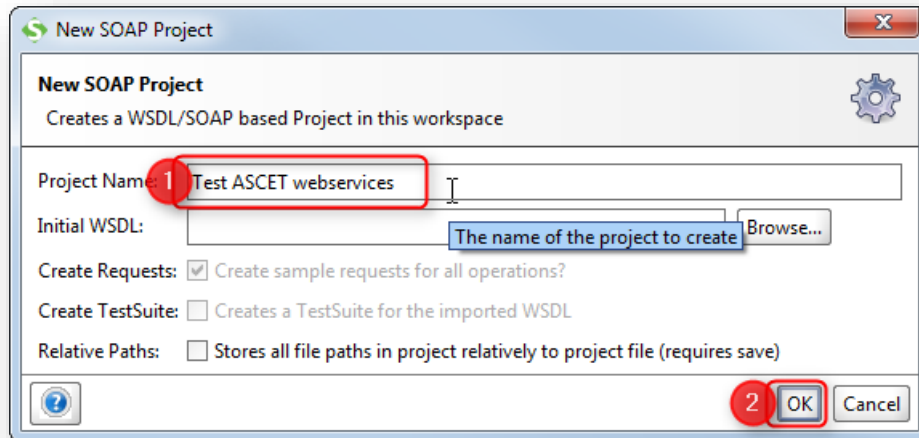
- We will use the tool **SoapUI** which is popular among web service developers
 - <https://www.soapui.org>

Create a SOAP project

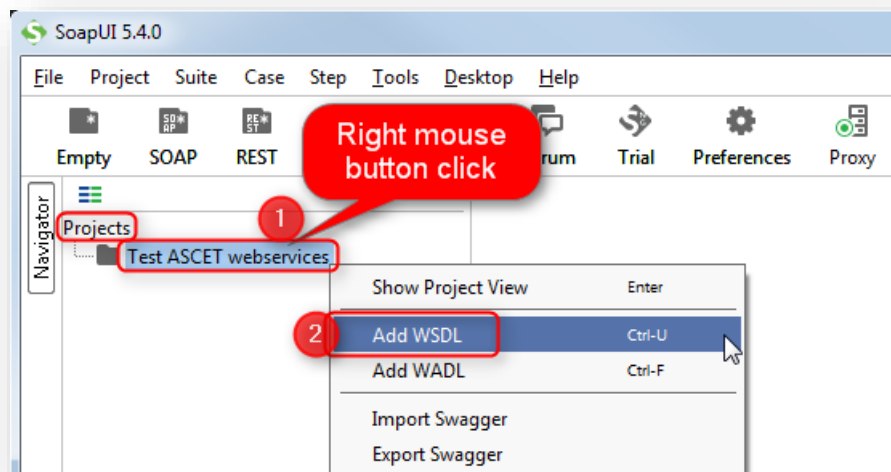
- In **SoapUI** > Menu bar > **File** > **New SOAP Project**



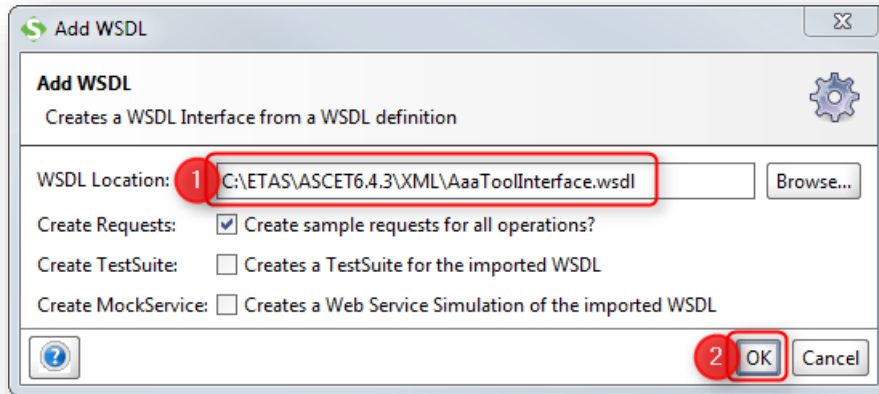
- In dialog **New SOAP Project** > At field **Project Name**: Type name for the project (for example: "Test ASCET webservices")
- In dialog **New SOAP Project** > Click **OK** button



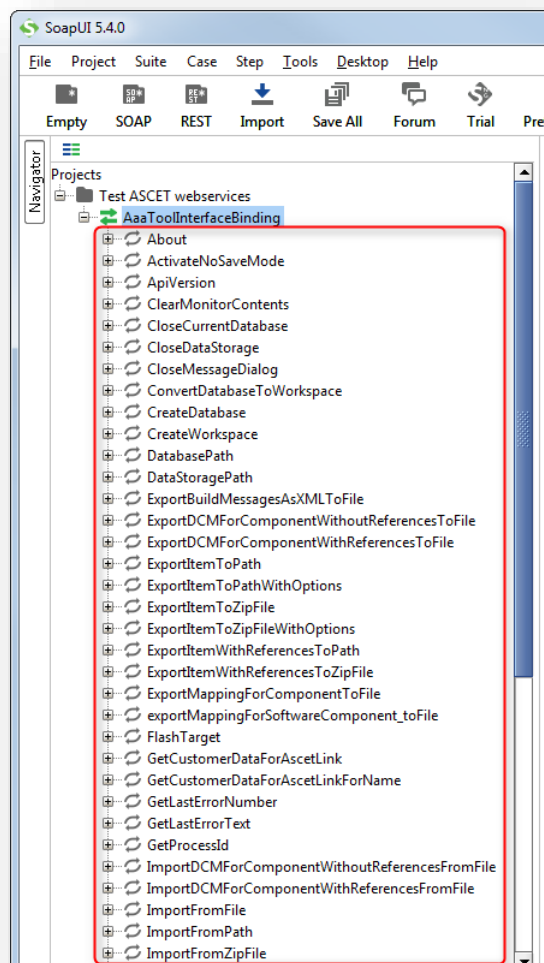
- In **SoapUI** > **Projects** > On the newly created project > Right mouse button click > **Add WSDL**



- In dialog **Add WSDL** > At field **WSDL Location** > Enter the path to the WSDL file
 - For example: **<ASCET_installation_directory>\XML\AaaToolInterface.wsdl**
 - Replace **<ASCET_installation_directory>** according to your installation
 - Example: **C:\ETAS\ASCET6.4.3\XML\AaaToolInterface.wsdl**
- In dialog **Add WSDL** > Click **OK** button

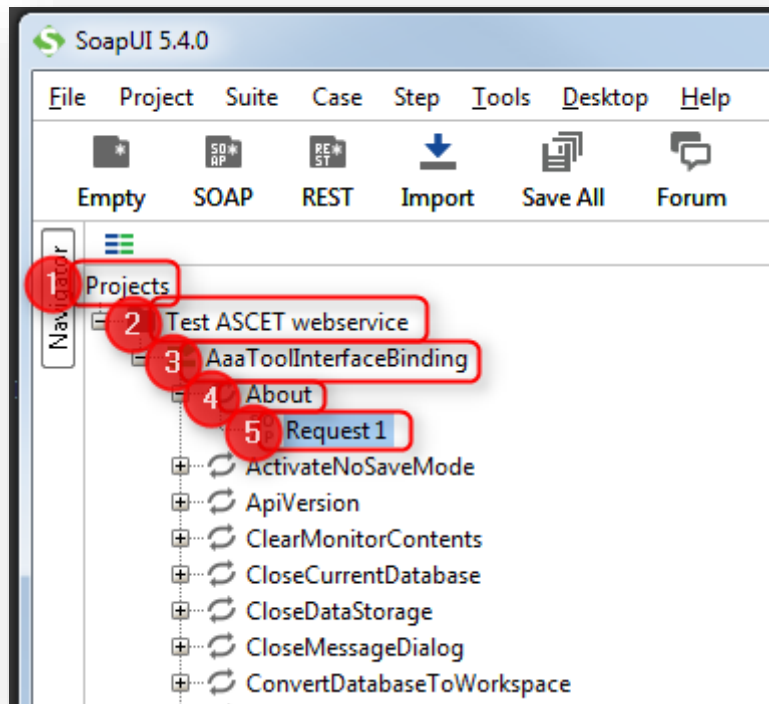


- The methods which are available via this web service are displayed

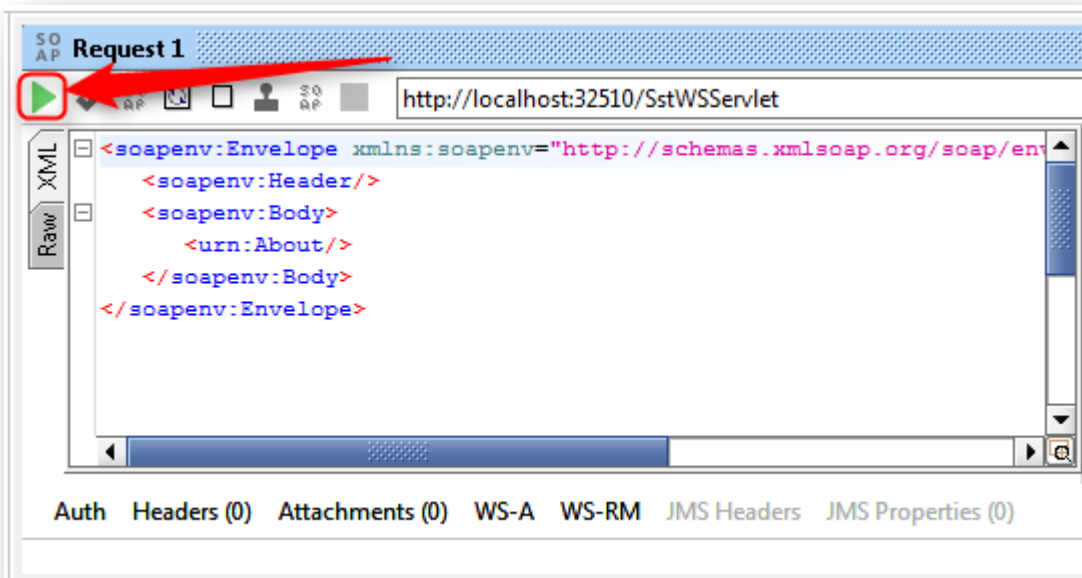


Test the ASCET webservice interface

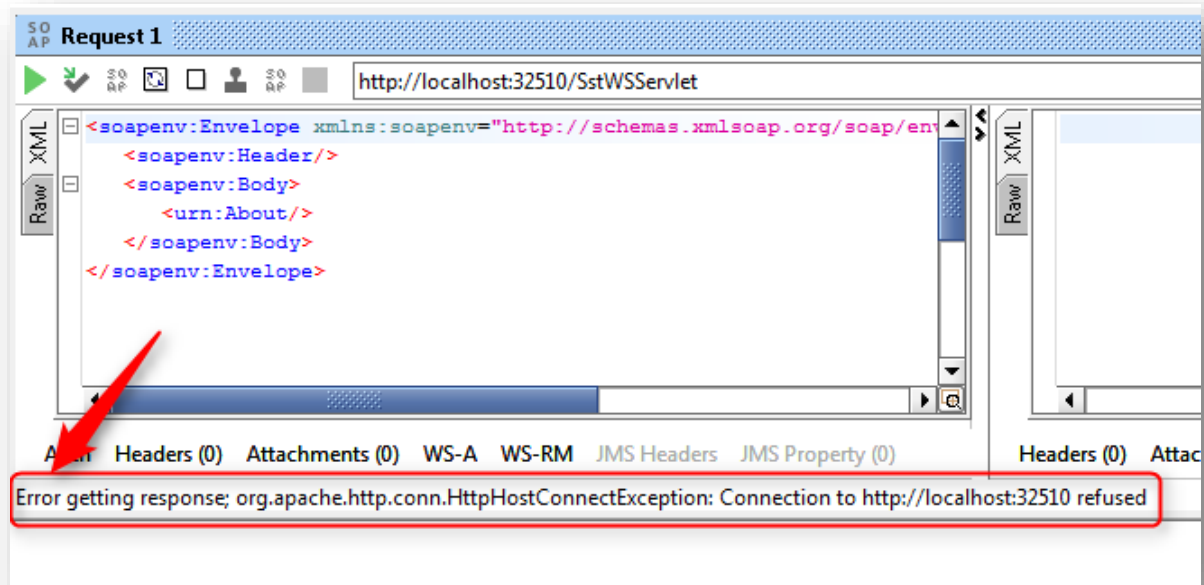
- In SoapUI > Projects > <Project> > AaaToolInterfaceBinding > About > Request1: Left mouse button double click



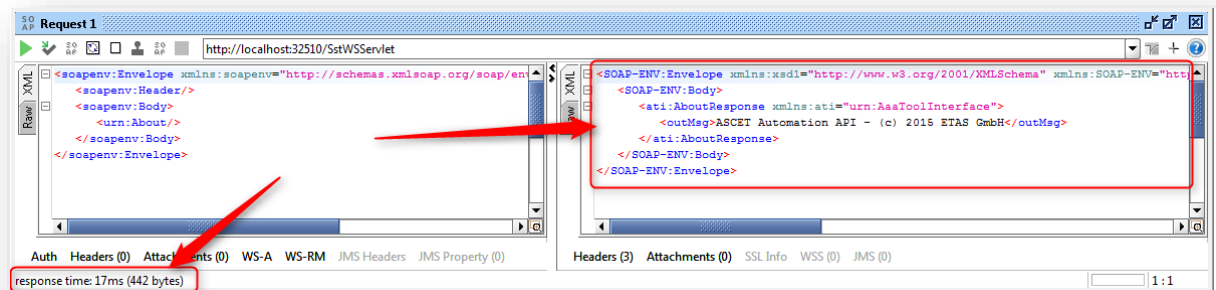
- In dialog Request1 > Click on green triangle



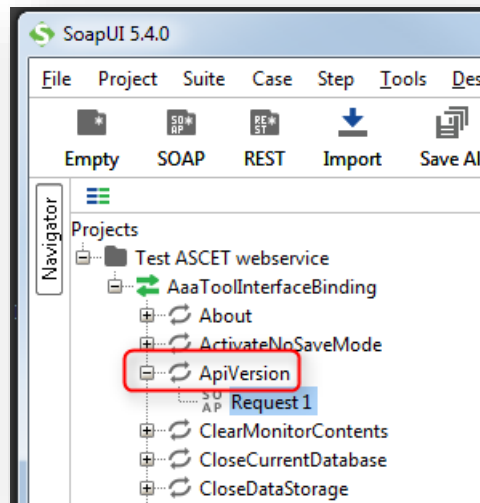
- In case there is following **error** displayed at the bottom of this dialog
- *Error getting response ... Connection to ... refused*



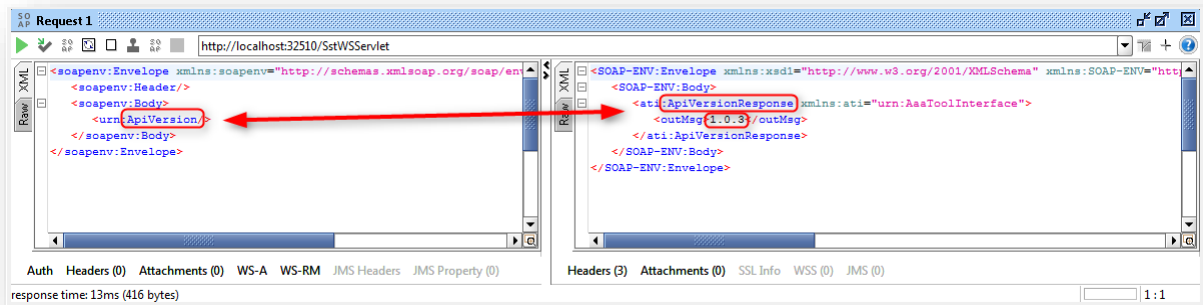
- SOLUTION: Make sure that ASCET is up and running and try again!
- In dialog **Request1** on the right hand side: There is the response from ASCET



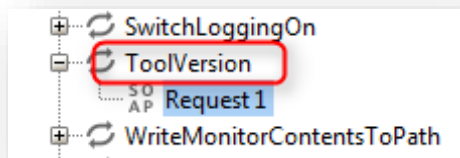
- The same procedure can be executed for other web service methods, for example **ApiVersion**



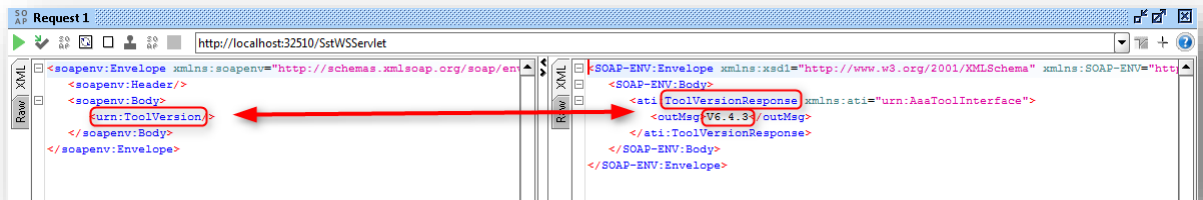
- Request (left hand side) and response (right hand side):



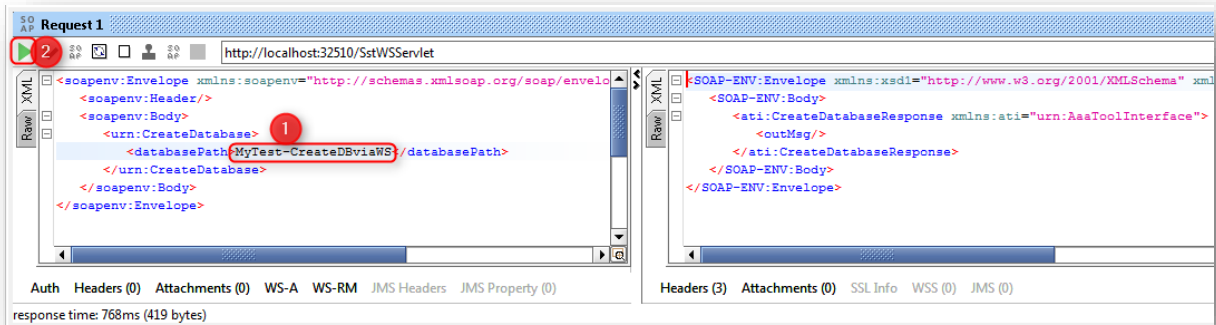
- Just another example: **ToolVersion**



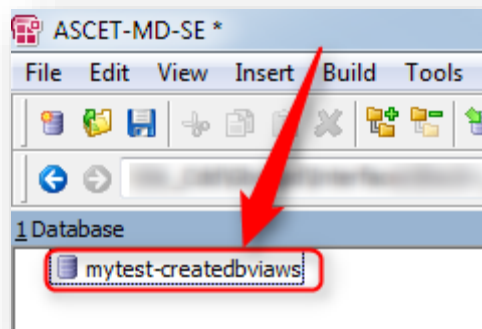
- Request and response:



- **Parameters:** Some methods require parameters
- For example: Method **CreateDatabase** requires a path for the database:



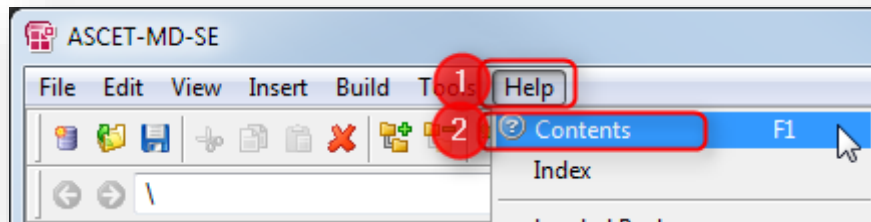
- As a result, the database is created as can be seen in ASCET:



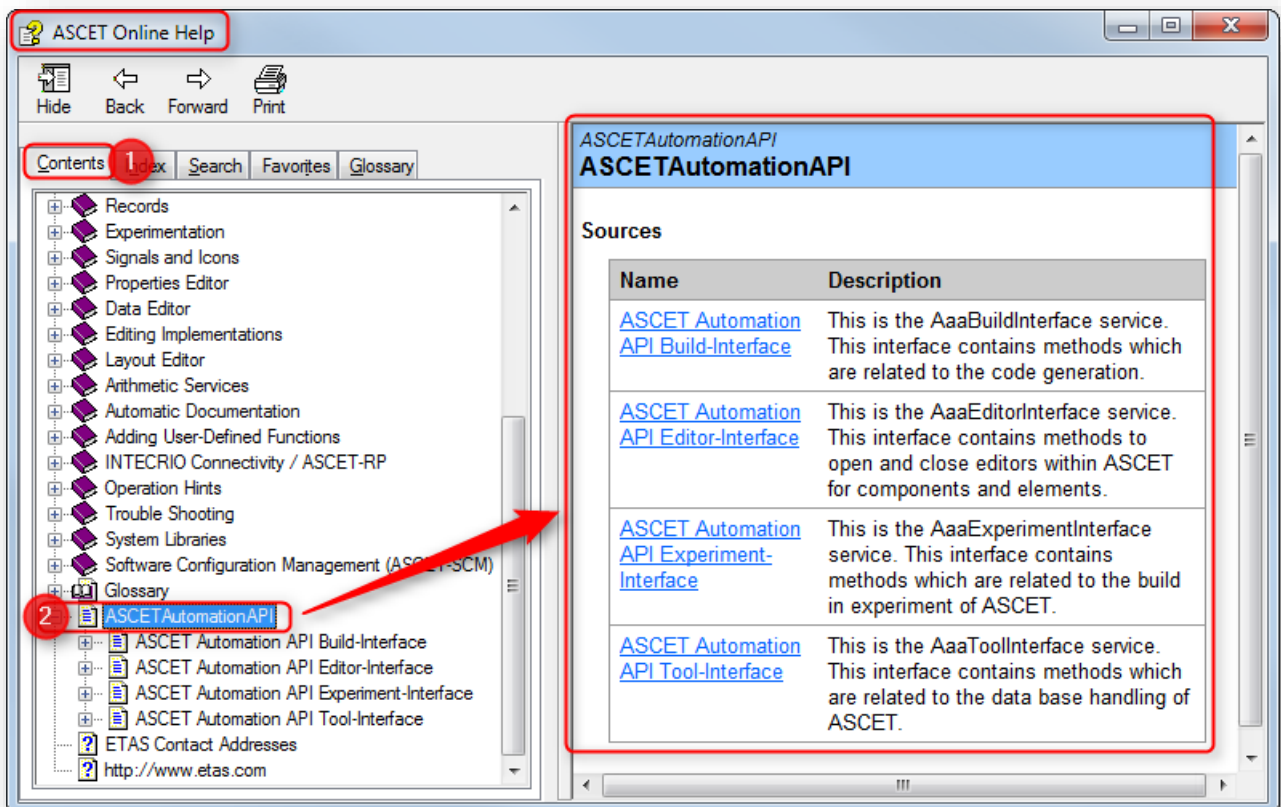


Additional information:

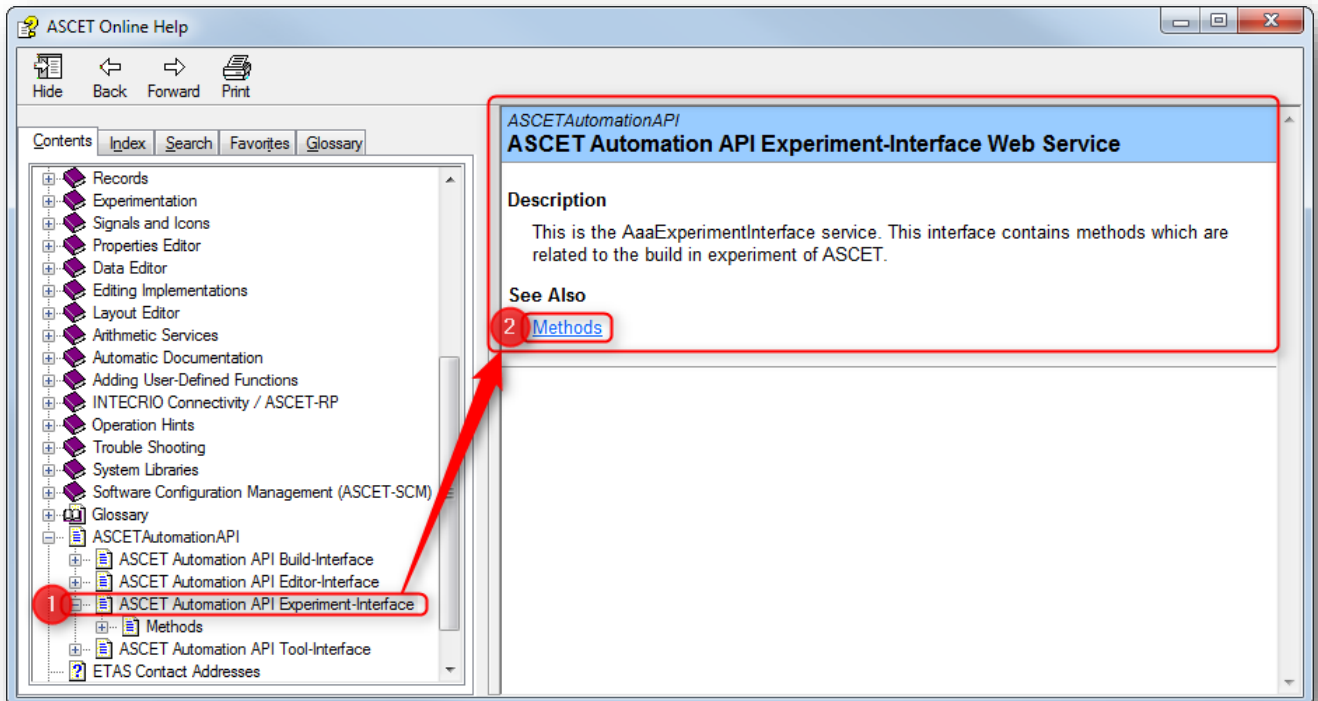
- Find information regarding the ASCET web services in the ASCET Online Help
 - In **ASCET > Menu bar > Help > Contents**



- In dialog **ASCET Online Help > tab Contents > ASCETAutomationAPI**



- From here we can dig deeper, for example to **ASCET Automation API Experiment-Interface Web Service**



- Click on the link **Methods** to discover further details

ASCETAutomationAPI
Methods: ASCET Automation API Experiment-Interface

Methods

Name	Description
CloseExperiment	Lookup for an open experiment. An open experiment will be closed by performing the window close action. The current experiment environment will not be saved. Return an error in case of: - Data Logger is active (use stop experiment)
CloseMessageDialog	Close the message box created with OpenMessageBox to enable control by the user interface. Example: CloseMessageDialog()
GetLastErrorNumber	Return the value of the error from the last method call. Example: GetLastErrorNumber()
GetLastErrorText	Return the text of the error from the last method call. Example: GetLastErrorText()
IsExperimentOpen	Lookup for an open experiment. Return an error in case of: - No open experiment available
LoadParameters	Read in the specified DCM style parameter file into the experiment. All entries of the parameter file will be read. Parameters as well as none volatile variables. The popup of the log file after read will be suppressed. Return an error in case of: - Experiment no open. - file path name is no valid. - Internal problem while reading.
OpenExperiment	Open the experiment for the specified component. If the component has to be opened within a project this must be done explicitly. If an experiment for the component is already open this experiment will be reused. If an experiment for another component is already open this experiment will be closed. The specified experiment configuration will be read for the experiment. If the default configuration should be used you can either use the string 'Default' or pass an empty string. The experiment will be opened as child window of the component manager. If necessary the build will automatically started before opening the experiment. Return an error in case of: - No database open. - Item not found in database. - Invalid component specified. - Hardware not defined. - Experiment configuration not available. - Error in build occurred. - Component is no project and the project option 'Message Usage Variant' is #NON_OPT_COPY_TASK

- You can drill deeper by clicking on the method name
- The same information can be found under **<ASCET_installation_directory>/Web Service**



Do you still have questions?

- You will find **further FAQ articles** on the ETAS homepage: www.etas.com/en/faq
- **Movies** corresponding to FAQ articles can be found on the [ETAS YouTube channel](#) as well
- Please feel free to contact our Support Center, if you have further questions.
- Here you can find all information: <http://www.etas.com/en/hotlines.php>

This information (here referred to as „FAQ“) is provided without any (express or implied) warranty, guarantee or commitment regarding completeness or accuracy. Except in cases of willful damage, ETAS shall not be liable for losses and damages which may occur or result from the use of this information (including indirect, special or consequential damages).