

ASCET: How to create an ASCET PSL model



Question

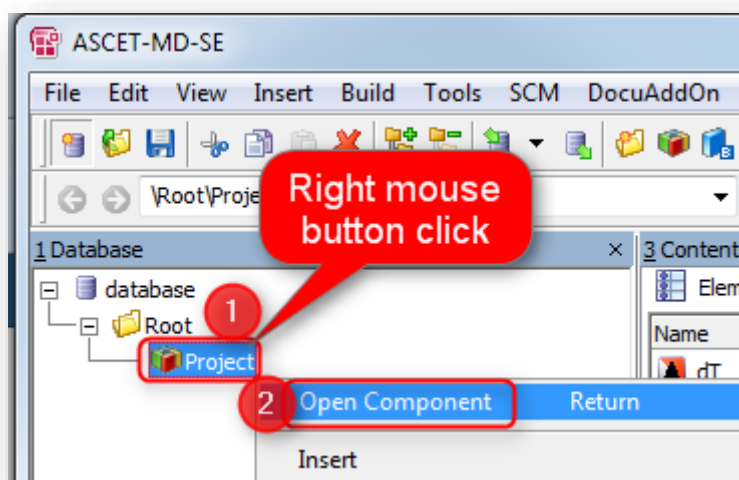
- How to create a ".dll" from a model in ASCET?
- How to create a DLL from a model for ASCMO
- In MOCA I want to add an ASCET Model
- How can I generate such an ASCET PSL model (*.dll) file?



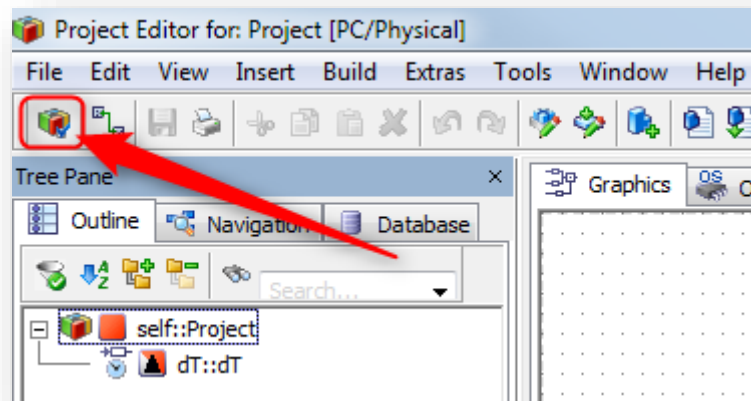
Answer

- This is possible via the **ASCET-PSL** Add-on
- The ASCET-PSL Add-on is an engineering solution
- Additions for the ASCET application as well as Simulink Toolbox extensions have to be installed
- Detailed instructions are available in the **ASCET-PSL_Manual.pdf**
- The ASCET-PSL Add-on provides an additional target for the code generation in the ASCET application

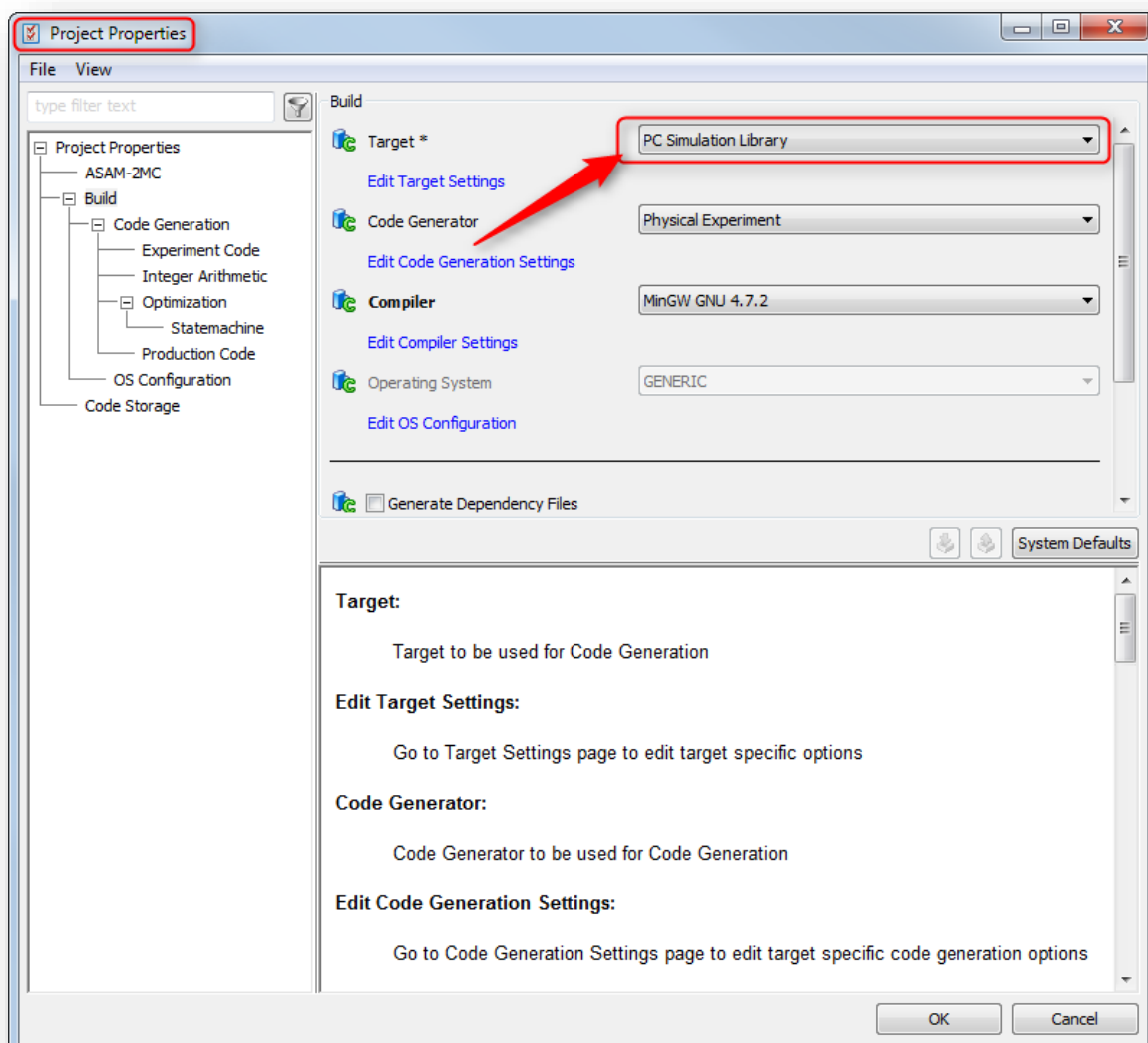
1. In **ASCET** → **Database** → On **project**: Click right mouse button → **Open Component**



- In dialog **Project Editor** → Tool bar → Click on **Properties** icon



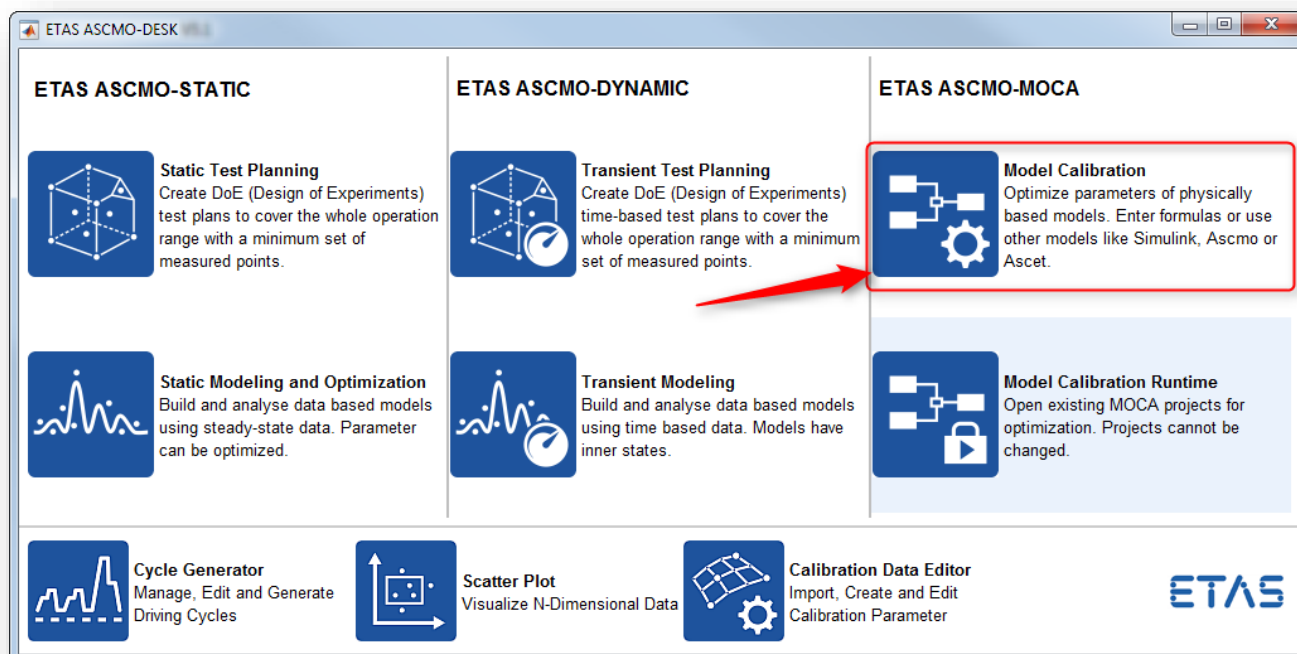
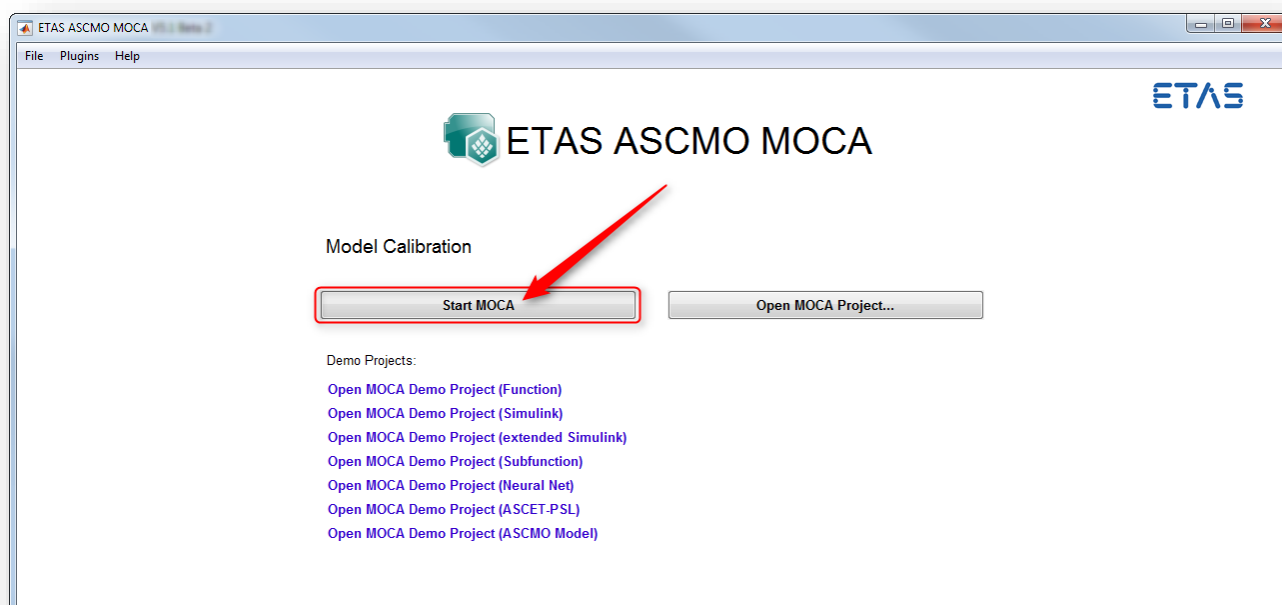
- In dialog **Project Properties** → **Target:** Select **PC Simulation Library**



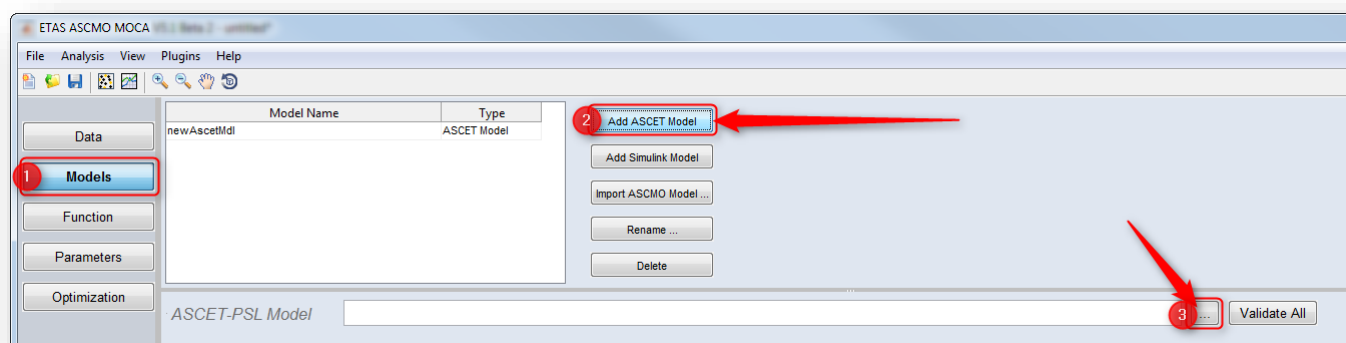


Additional information

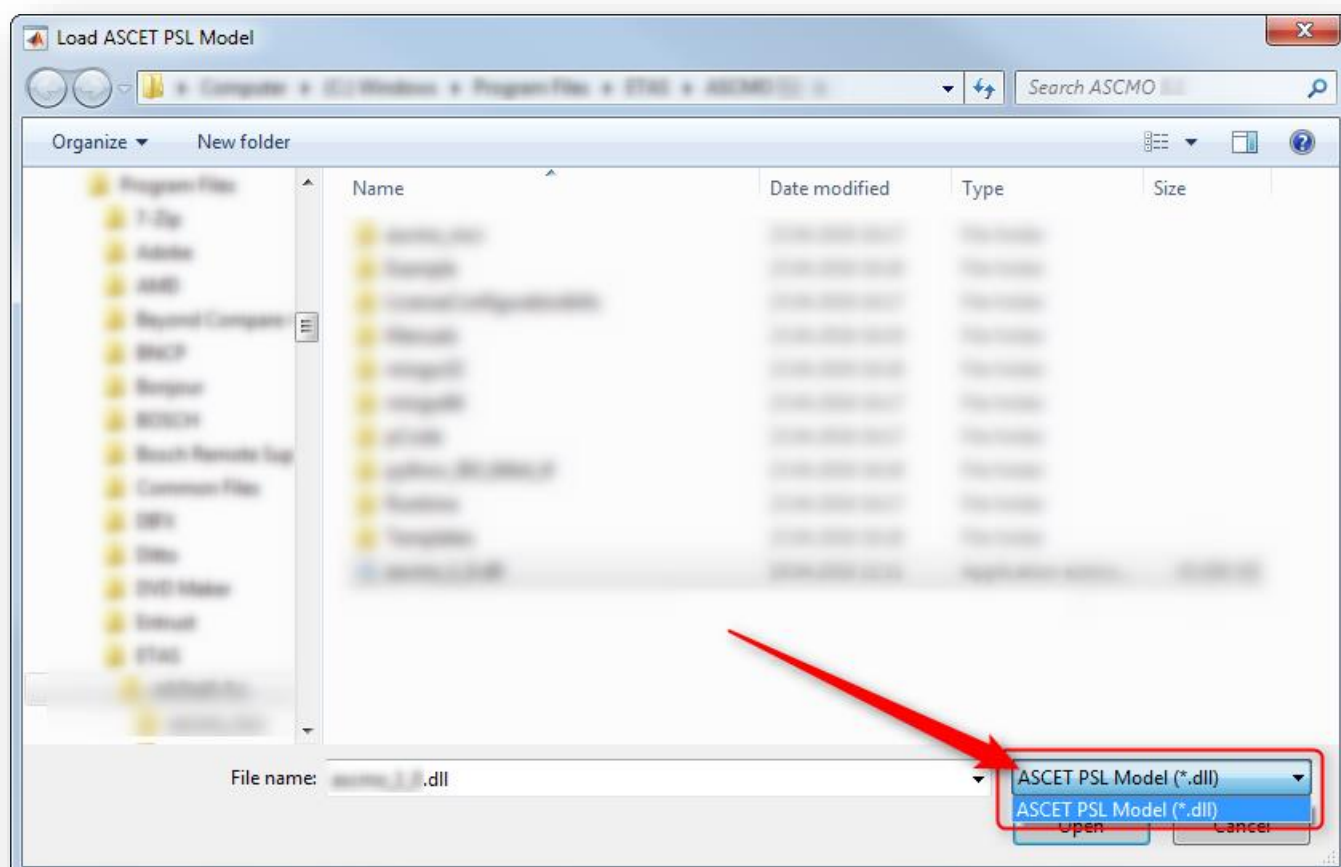
- How to import the ASCET PSL model (*.dll) file into ASCMO-MOCA:

 1. In **ETAS ASCMO-DESK** → **Model Calibration**

 2. In **ETAS ASCMO MOCA** → Click **Start MOCA** button


- In **ETAS ASCMO MOCA** → **Models** → **Add ASCET Model** → On right hand side of field **ASCET-PSL Model**: Click "..." button



- In dialog **Load ASCET PSL Model**: I can only choose **ASCET PSL Model (*.dll)** as input file type





Do you still have questions?

- You will find **further FAQ articles** on the ETAS homepage: www.etas.com/en/faq
- **Movies** corresponding to FAQ articles can be found on the [ETAS YouTube channel](#)
- Please feel free to contact our Support Center, if you have further questions.
- Here you can find all information: <http://www.etas.com/en/hotlines.php>

This information (here referred to as „FAQ“) is provided without any (express or implied) warranty, guarantee or commitment regarding completeness or accuracy. Except in cases of willful damage, ETAS shall not be liable for losses and damages which may occur or result from the use of this information (including indirect, special or consequential damages).