

ASCET-SCM and PTC Integrity Lifecycle Manager via MSSCCI



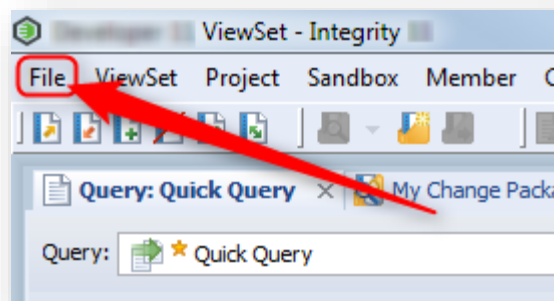
Question

- We want to use PTC Integrity as version control system and for variant handling for ASCET models
- How to set up ASCET-SCM with PTC Integrity and MSSCCI (Microsoft Source Code Control Interface)

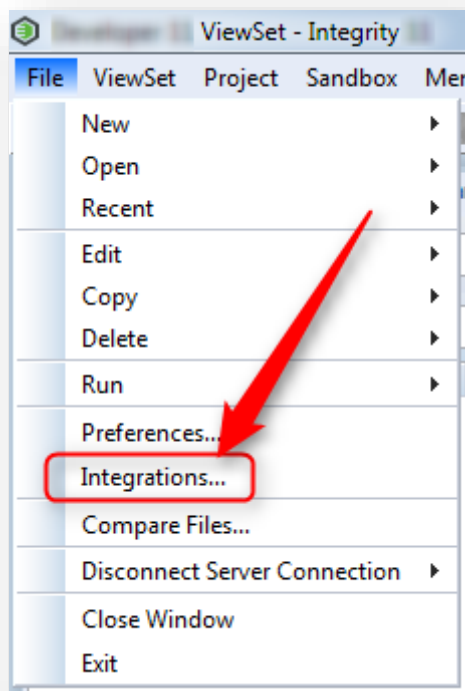


Answer

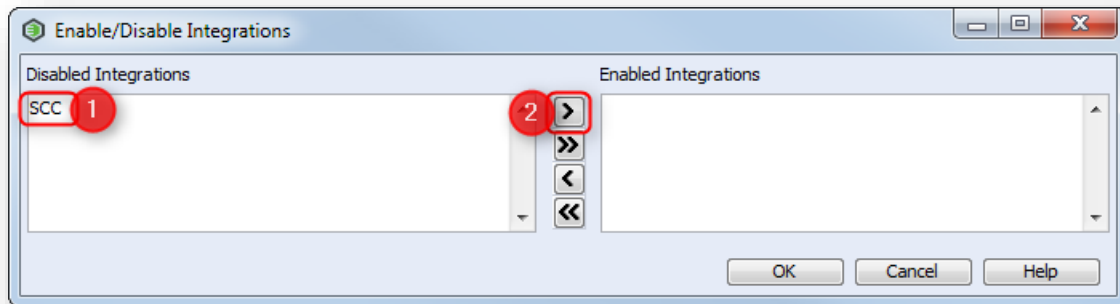
1. In **PTC Integrity Lifecycle Manager** client → **Menu bar** → **File**



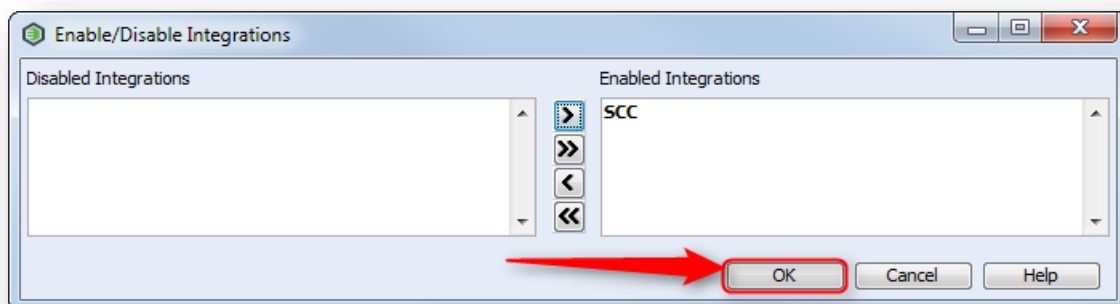
2. Click **Integrations...**



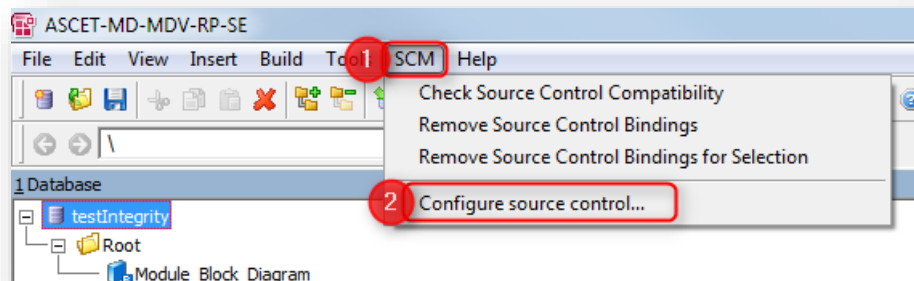
- In dialog **Enable/Disable Integrations**, in panel **Disabled Integrations**: Click **SCC** → Click **>** button



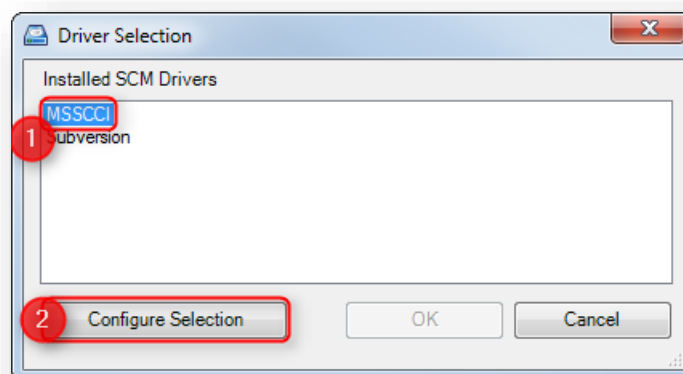
- Click **OK** button → Then close/leave the PTC Integrity Lifecycle Manager client



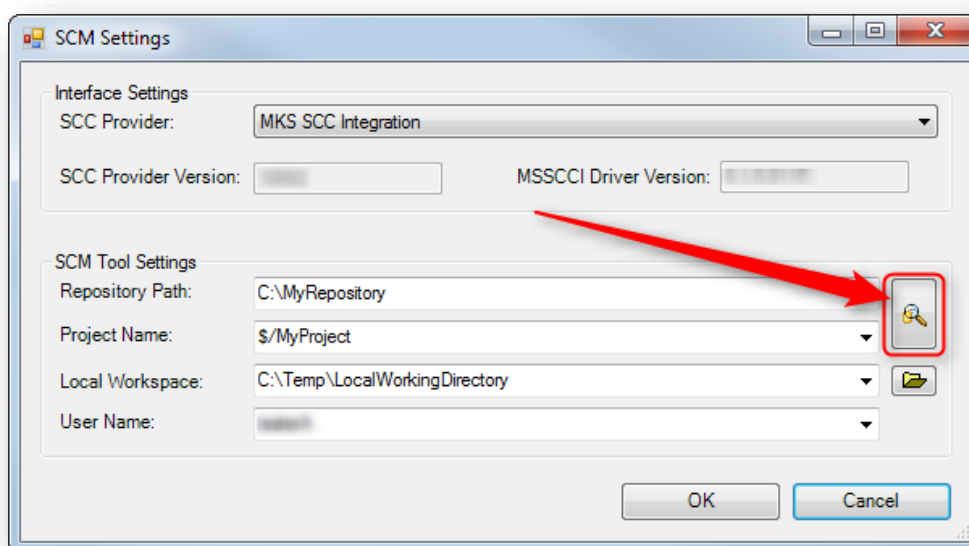
- In **ASCET** → **Menu bar** → **SCM** → **Configure source control...**



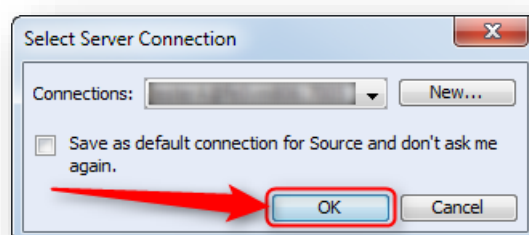
- In dialog **Driver Selection** → Click **MSSCCI** → Click **Configure Selection** button



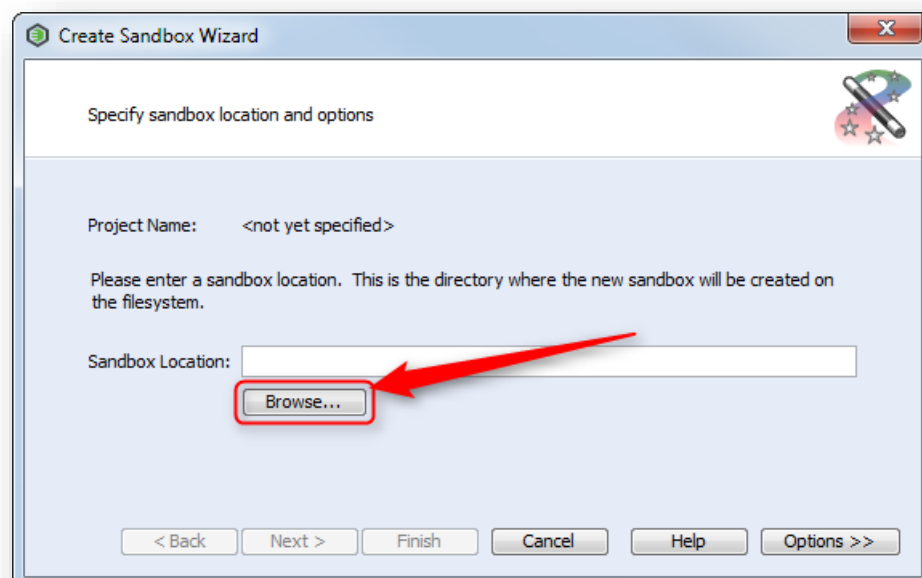
7. In dialog **SCM Settings** → Click **Magnifying glass** button



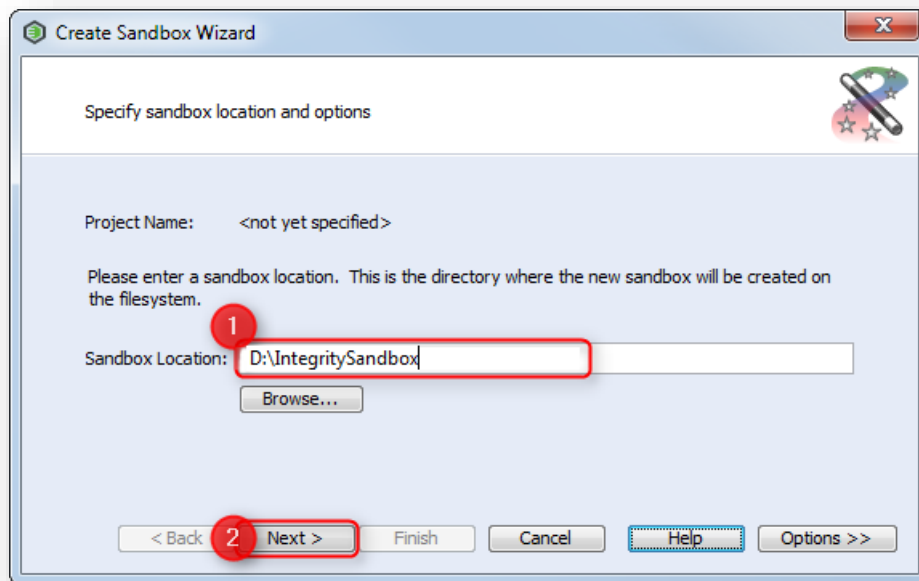
8. In dialog **Select Server Connection** → Click **OK** button



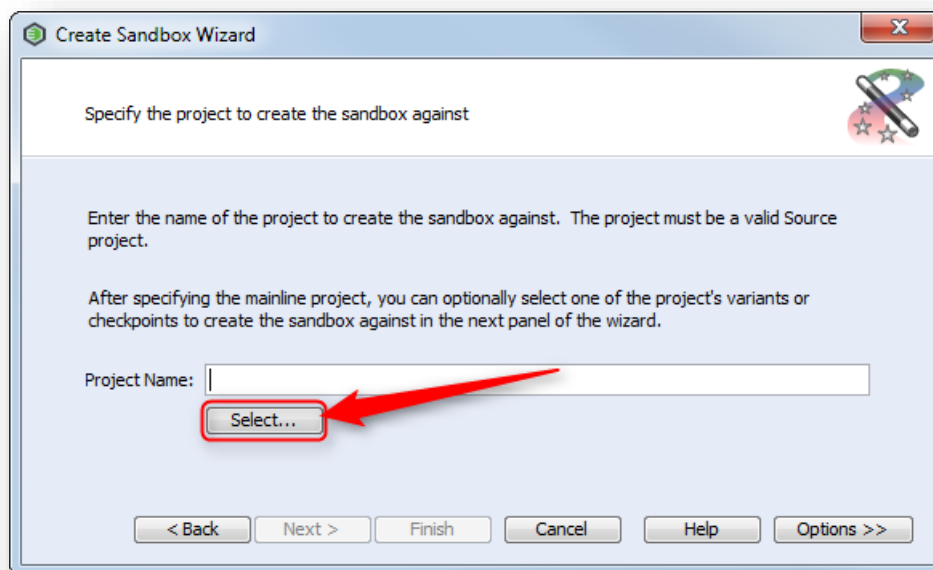
9. In **PTC Integrity** dialog **Create Sandbox Wizard**, at field **Sandbox Location** → Click **Browse...** button



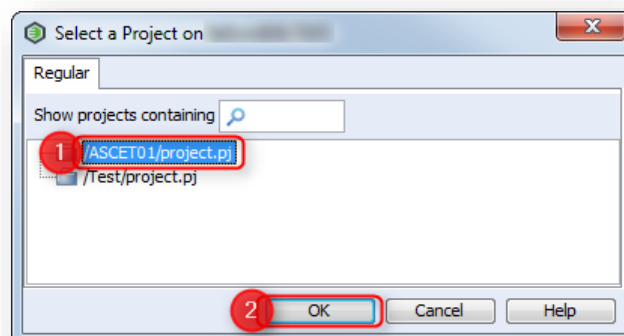
10. Select a directory as sandbox location → Click **Next >** button



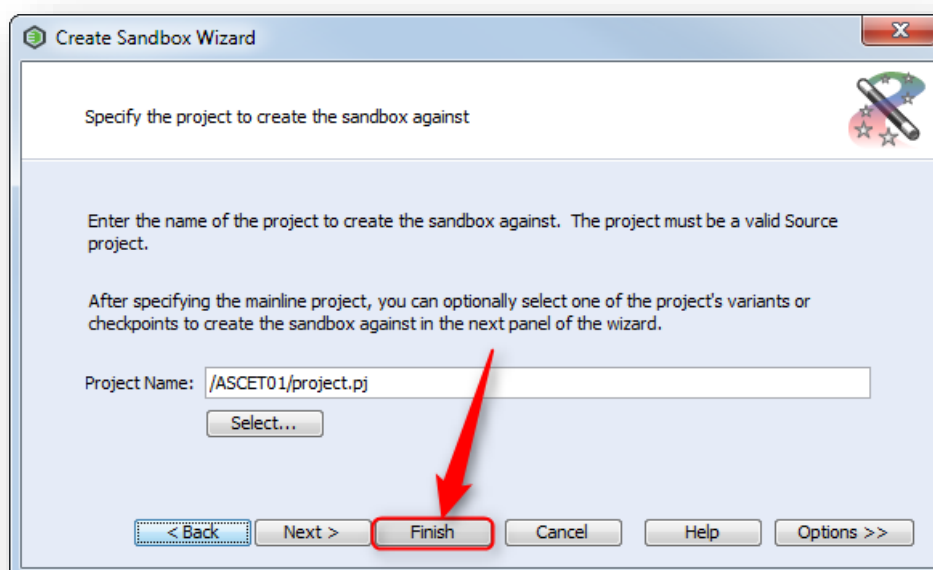
11. At field **Project Name** → Click **Select...** button



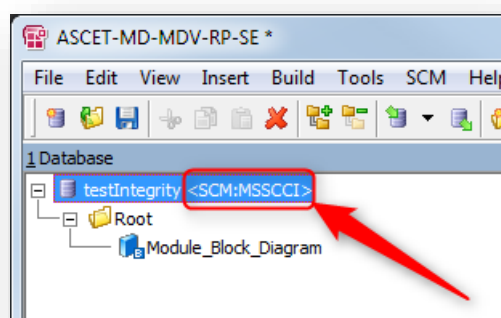
12. In dialog **Select a Project on <integrity_server>** → Click on a project → Click **OK** button



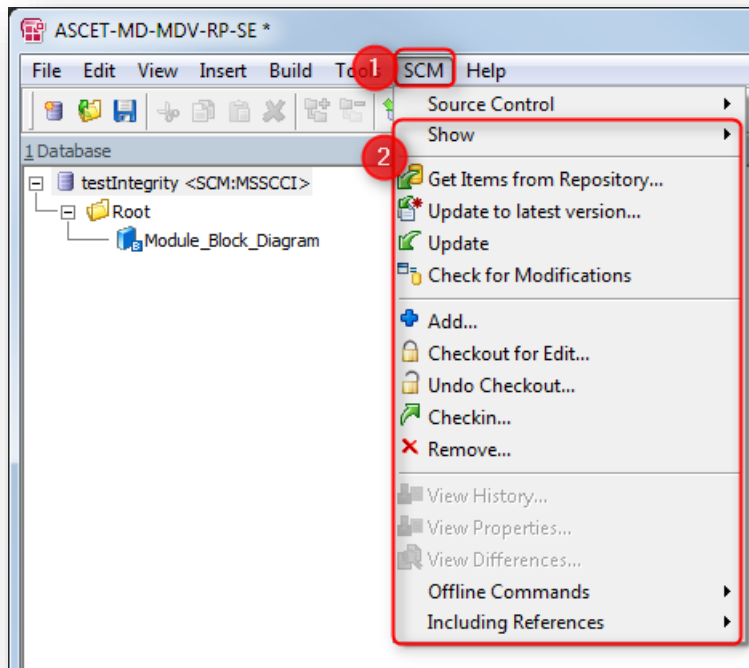
13. Click **Finish** button



14. Back in ASCET: "<SCM:MSSCCI>" at project indicates that project is under SCM control

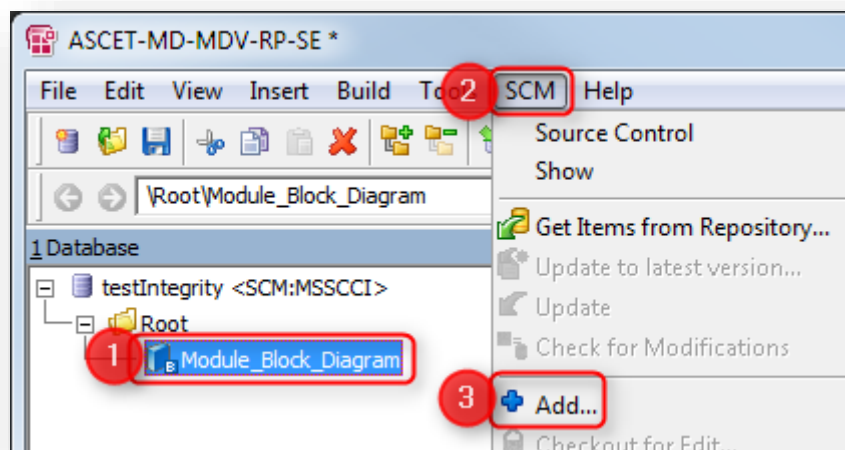


15. In **ASCET** → **Menu bar** → **SCM**: Further menu options are available now

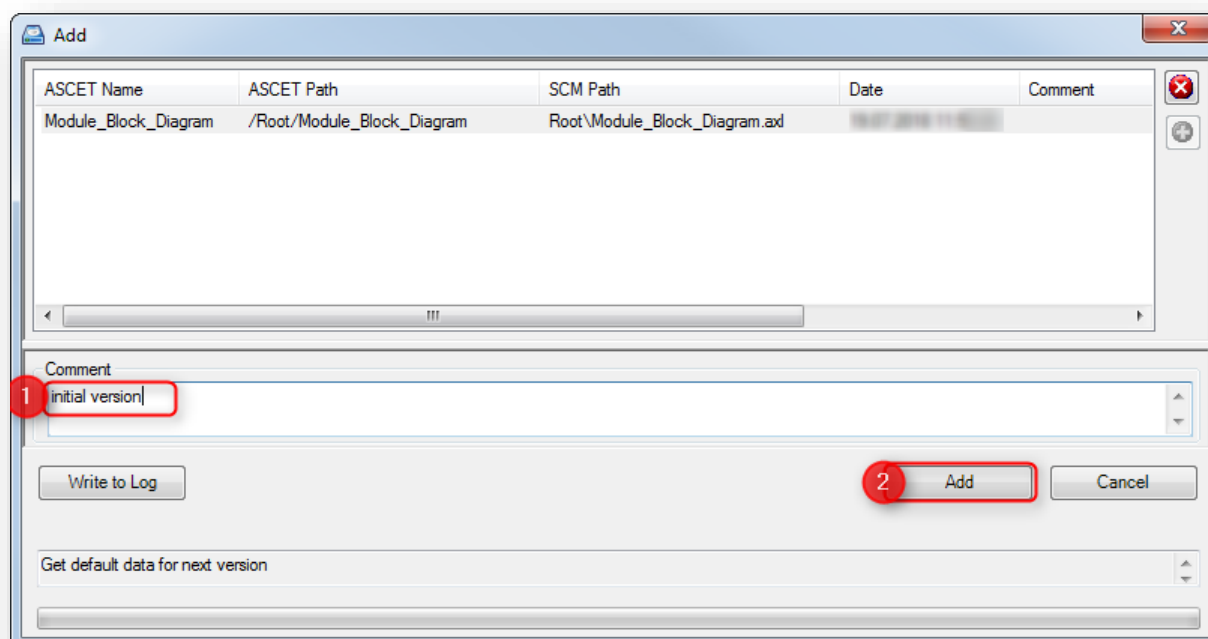


Example use case: Add new element to version control

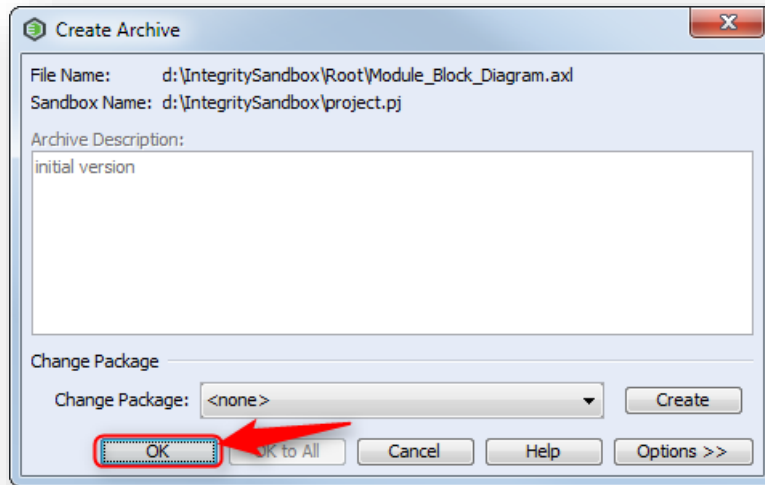
1. In **ASCET** → **Database** view → On component: Left mouse button click to select it → **Menu bar** → **SCM** → **Add...**



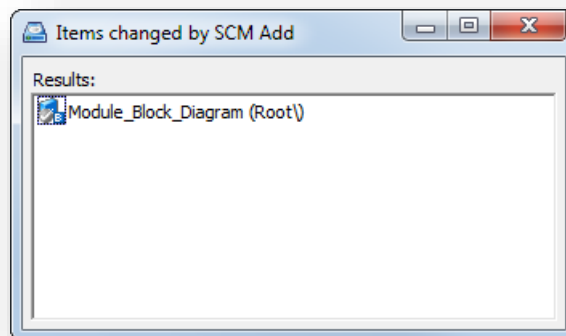
2. In dialog **Add** → Field **Comment**: Enter a meaningful comment → Click **Add** button



3. In dialog **Create Archive** → Click **OK** button

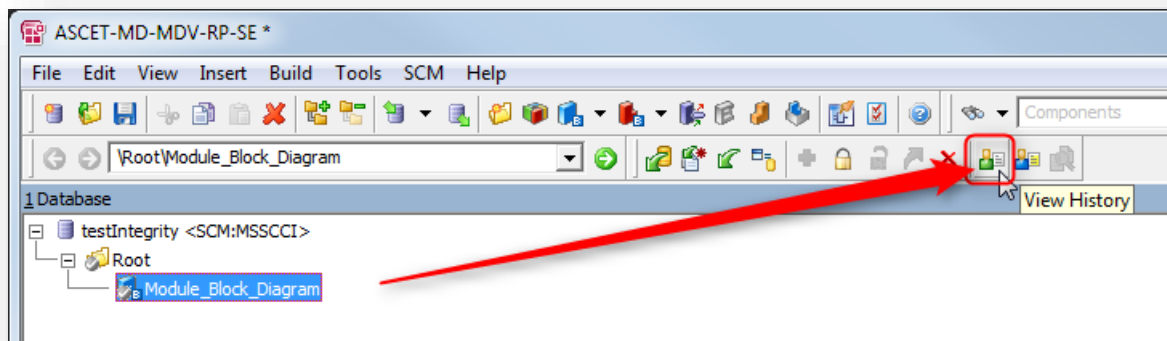


4. Result: Dialog **Items changed by SCM Add** → Close this dialog

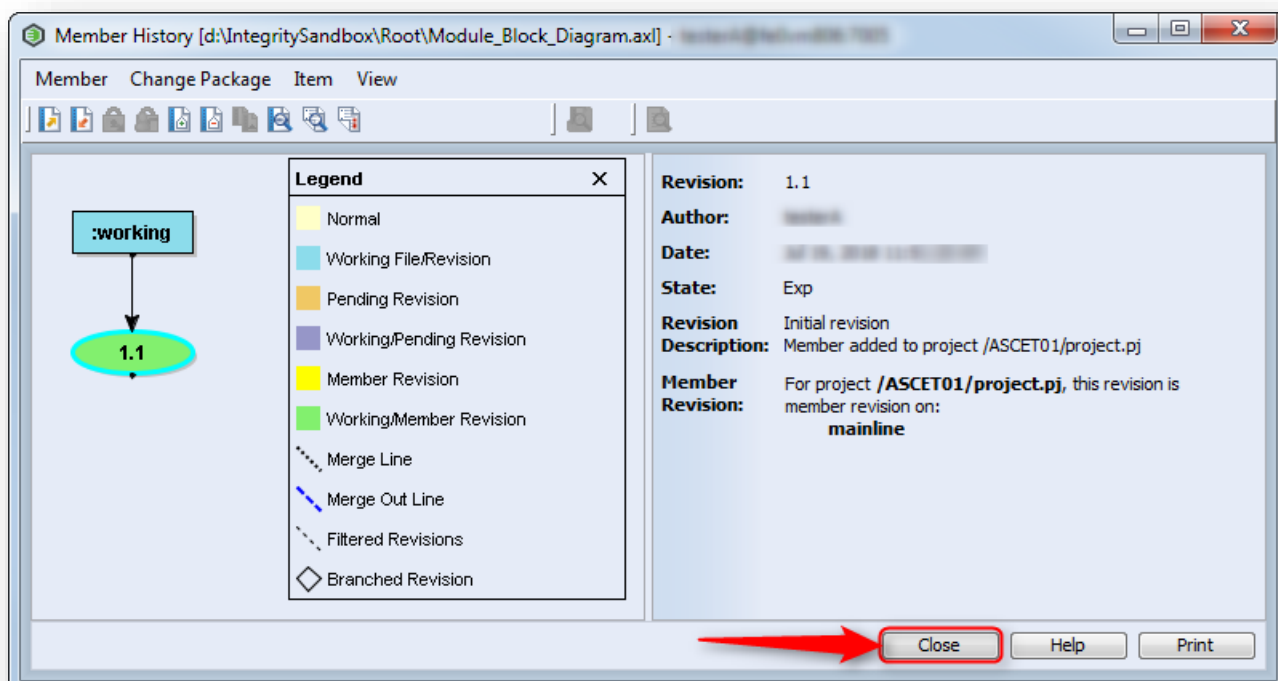


Example use case: Show version history of an ASCET model component

1. In **ASCET** → **Database** view → On component: Left mouse button click to select it → **Tool bar** → Click **View History** icon



2. Result: PTC Integrity dialog **Member History** is displayed → Just click **Close** button to close the dialog





Additional information

- PTC Integrity Lifecycle Manager formerly known as "**PTC Integrity**" formerly known as "**MKS Integrity**"
- There is an **ASCET add-on** available for PTC Integrity Lifecycle Manager
 - It provides further features of PTC Integrity beyond the MSSCCI
 - More comfort and as a consequence extended productivity for your developers
 - Please get in contact with your ETAS sales representative for further details



Do you still have questions?

- You will find **further FAQ articles** on the ETAS homepage: www.etas.com/en/fag
- **Movies** corresponding to FAQ articles can be found on the [ETAS YouTube channel](#)
- Please feel free to contact our Support Center, if you have further questions.
- Here you can find all information: <http://www.etas.com/en/hotlines.php>

This information (here referred to as „FAQ“) is provided without any (express or implied) warranty, guarantee or commitment regarding completeness or accuracy. Except in cases of willful damage, ETAS shall not be liable for losses and damages which may occur or result from the use of this information (including indirect, special or consequential damages).