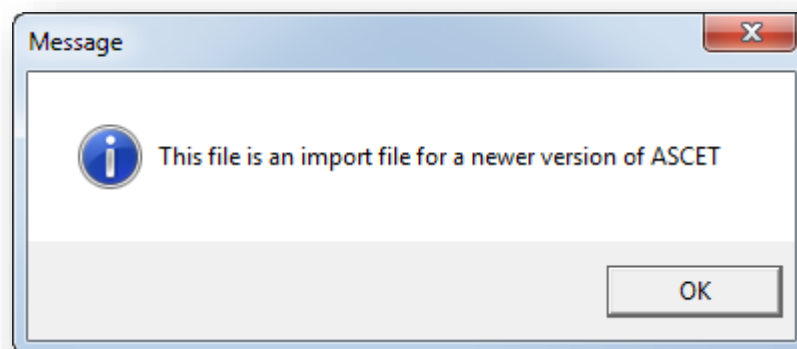


How to export an ASCET model to a specific ASCET version?



Question

- How to export an ASCET model to a specific ASCET version?
- I am using ASCET V6.4 but my customer is using ASCET V6.3
 - Is there a way to export an ASCET model from v6.4 to v6.3?
- In ASCET V6.1: I want to import a model from ASCET V6.4 but I keep receiving the following message:
 - *Message: This file is an import file for a newer version of ASCET*

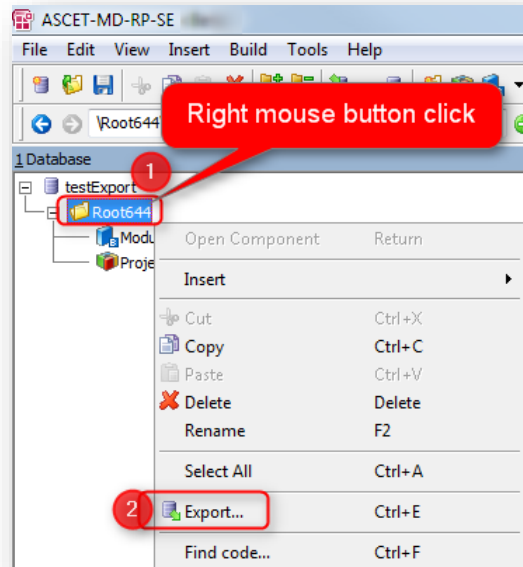


- Result: the model is not imported

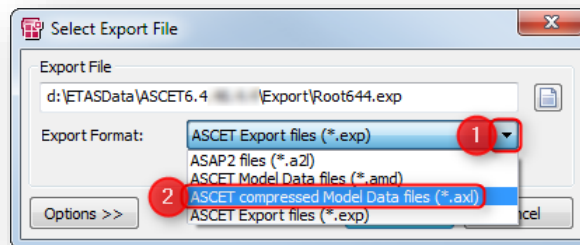


Follow these steps to export your ASCET model to a specific ASCET version

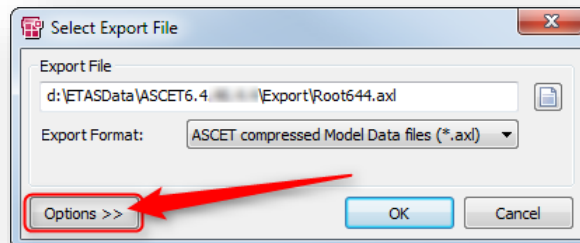
1. In **ASCET** → On component: Right mouse button click → **Export...**



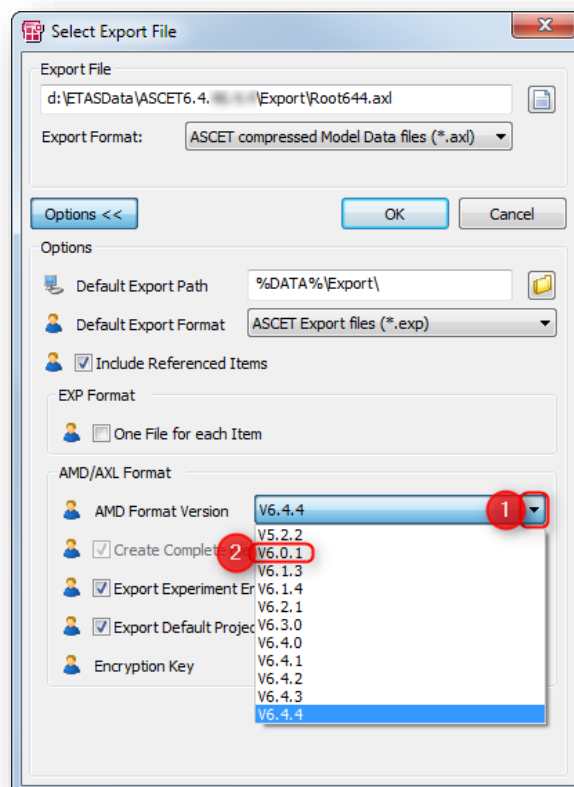
2. In dialog **Select Export File** → At field **Export Format:** Click black triangle → Click **ASCET compressed Model Data files (*.axl)** option



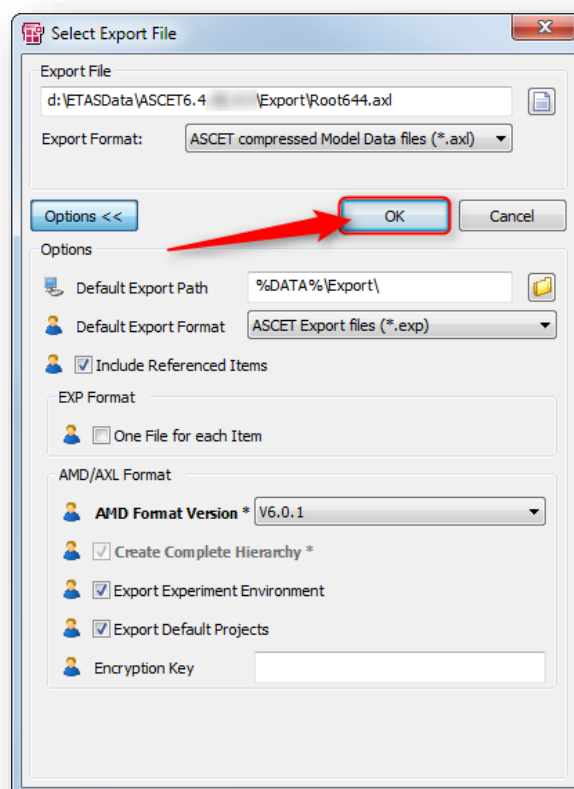
3. Then click **Options >>** button



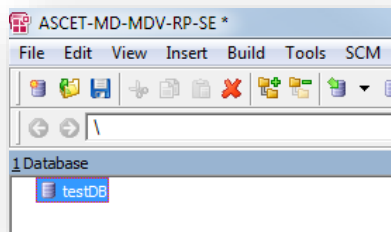
4. In panel **AMD/AXL Format**, field **AMD Format Version**: Click black triangle → Select ASCET version, for example **V6.0.1**



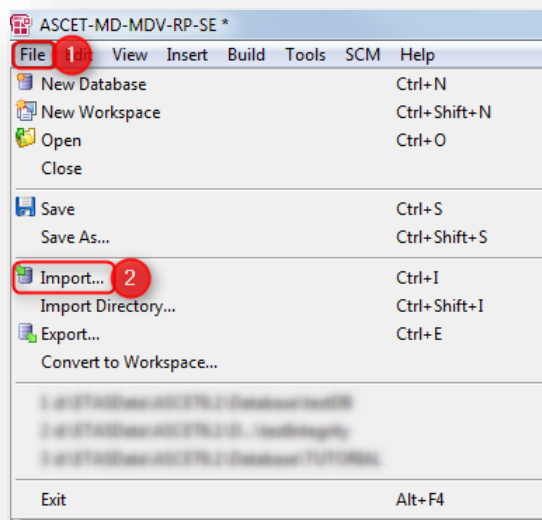
5. Click **OK** button



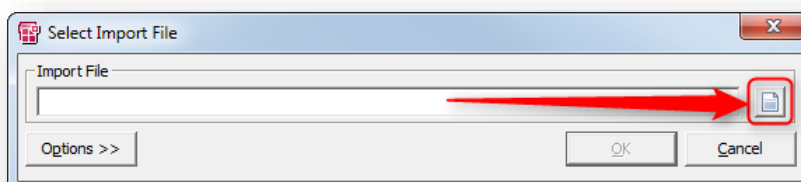
6. Close ASCET
7. Open ASCET of other version



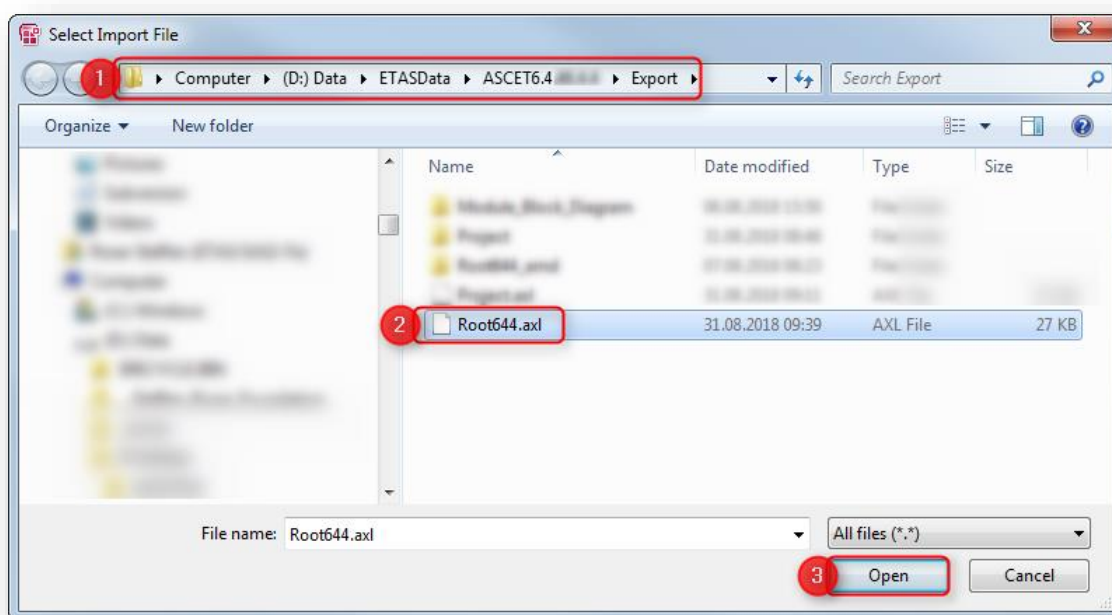
8. In **Menu bar** → **File** → **Import...**



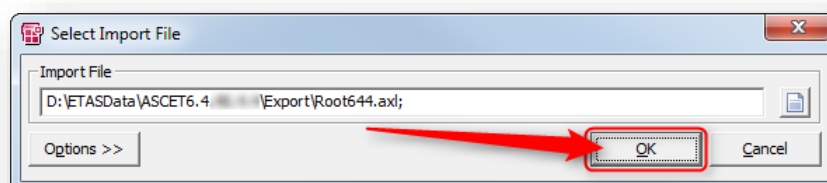
9. In dialog **Select Import File** → Click paper sheet button



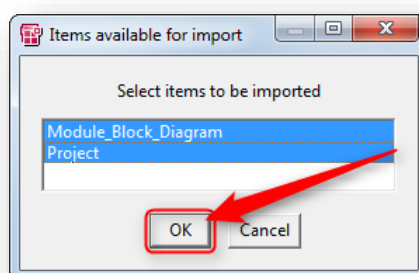
10. Navigate to export directory → Select the exported **axl** file → Click **Open** button



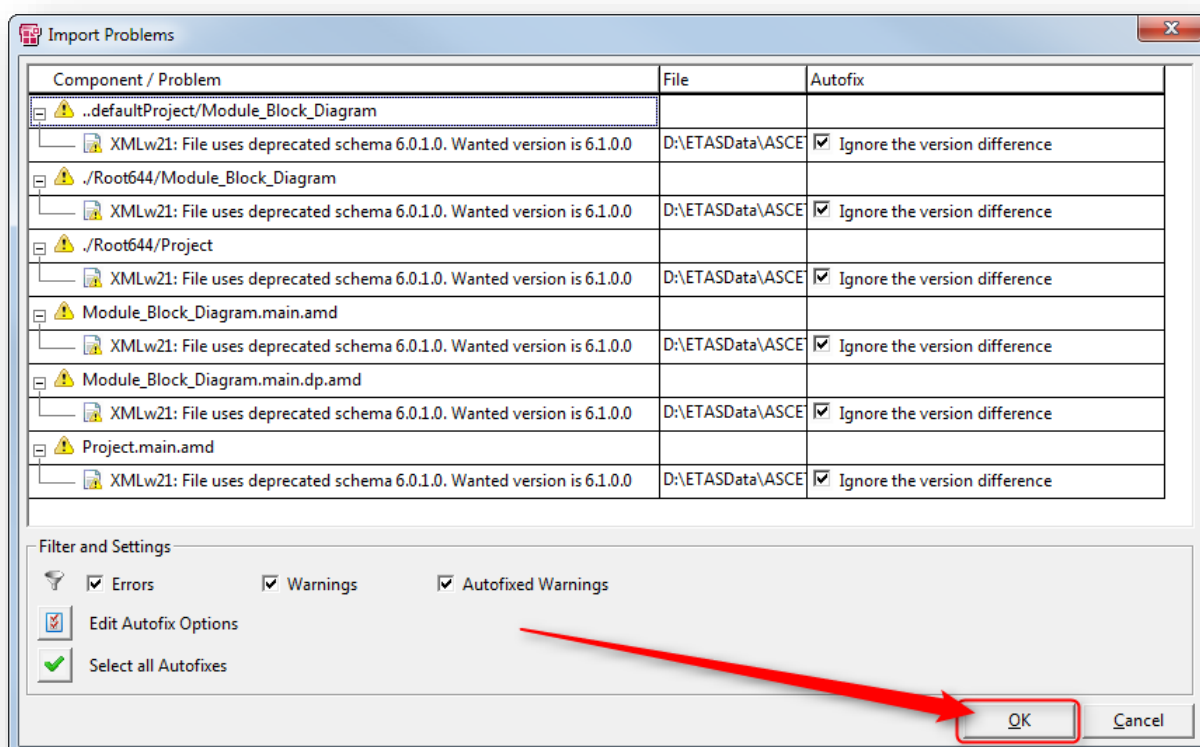
11. Click **OK** button



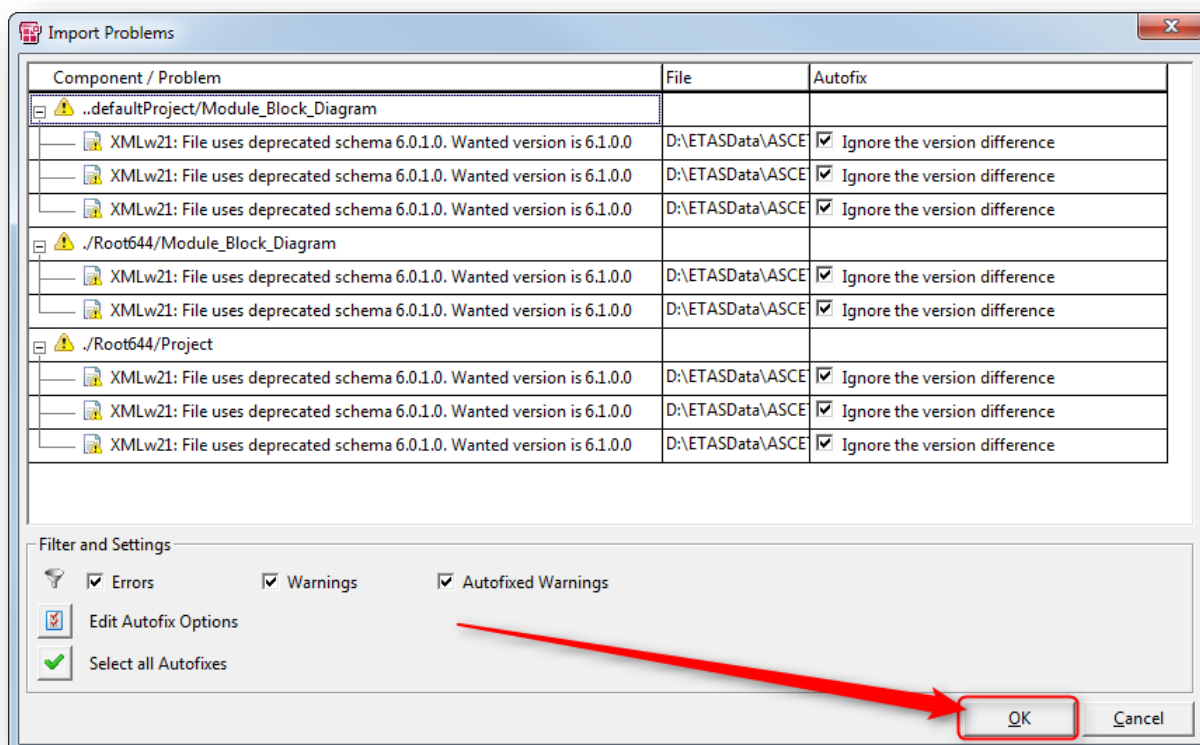
12. In dialog Items available for import → Click OK button



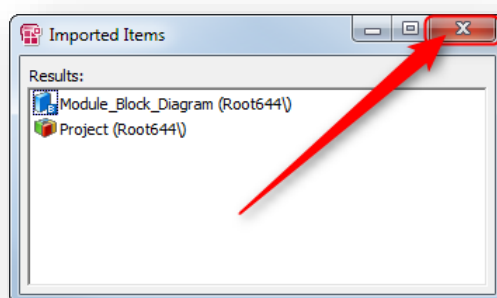
13. In dialog **Import Problems** → Click **OK** button



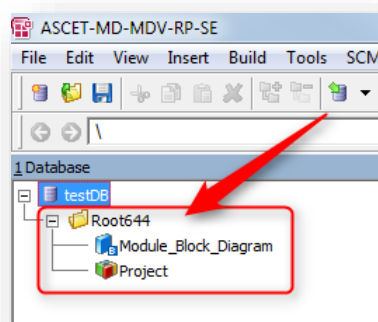
14. In next **Import Problems** dialog → Click **OK** button



15. In dialog **Imported Items** → Click white X in red area in top right corner to close this dialog



16. Result: Model is imported



Do you still have questions?

- You will find **further FAQ articles** on the ETAS homepage: www.etas.com/en/faq
- **Movies** corresponding to FAQ articles can be found on the [ETAS YouTube channel](#)
- Please feel free to contact our Support Center, if you have further questions.
- Here you can find all information: <http://www.etas.com/en/hotlines.php>

This information (here referred to as „FAQ“) is provided without any (express or implied) warranty, guarantee or commitment regarding completeness or accuracy. Except in cases of willful damage, ETAS shall not be liable for losses and damages which may occur or result from the use of this information (including indirect, special or consequential damages).