

ASCET: Least possible period time for a task



Question

- What is the least possible period time for a task in ASCET?
- I tried to set period of a task to 50 microseconds but the resulting period stays the same



Answer

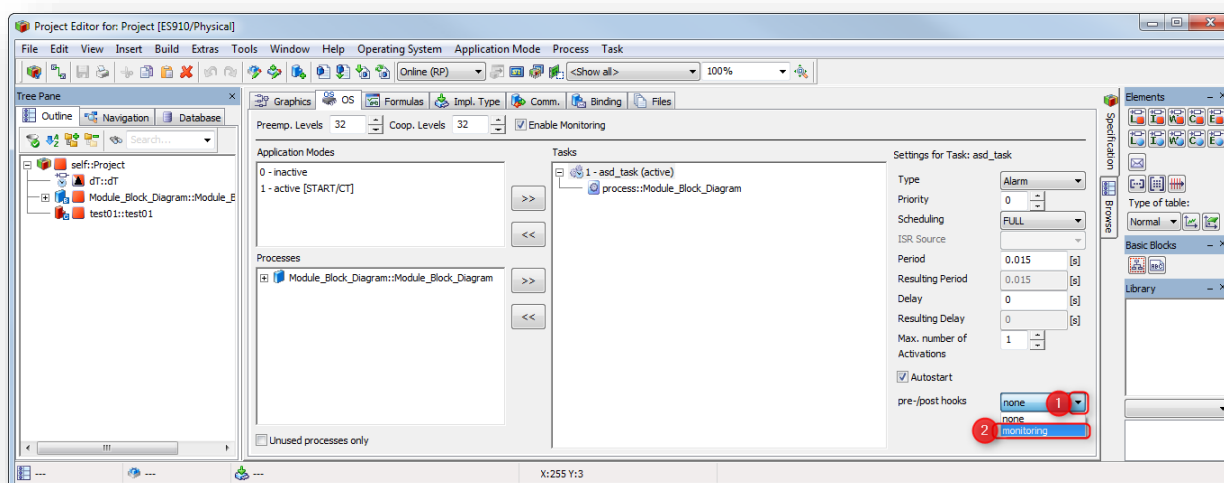
- The least period is 100 μ s (= 0.1 ms = 0.0001 s)



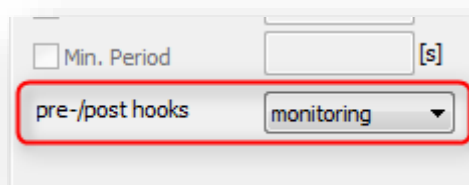
Additional information

How to check the real period time of a task in an online experiment

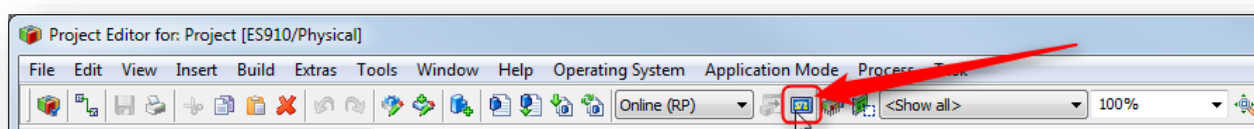
1. In **Project Editor** on tab **OS** at panel **Settings for Task** → Field **pre/post hooks**: Click black triangle → Click **monitoring**



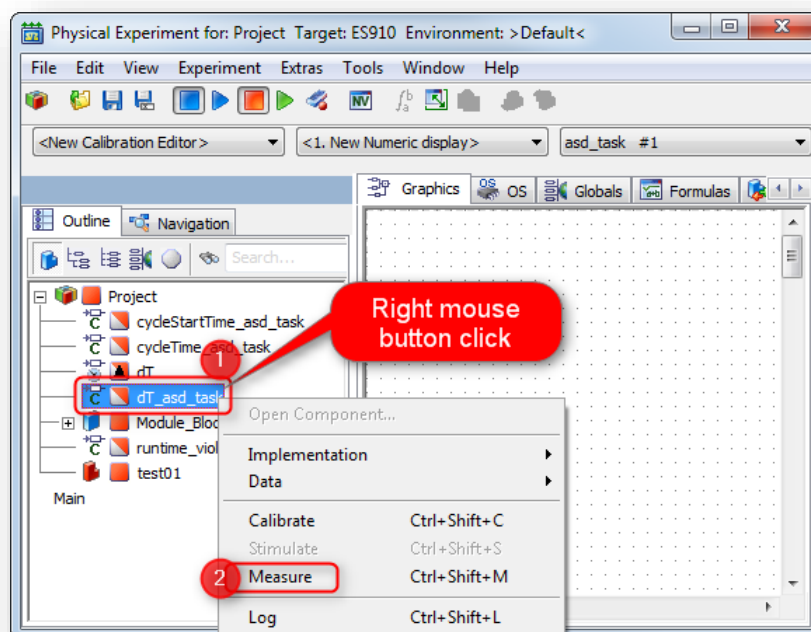
2. Result:



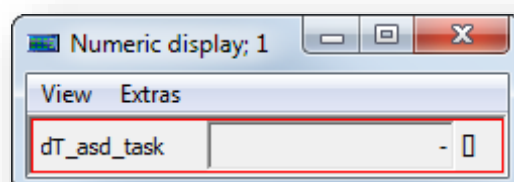
3. In **Project Editor** → **Tool bar** → **Open Experiment for selected Experiment Target**



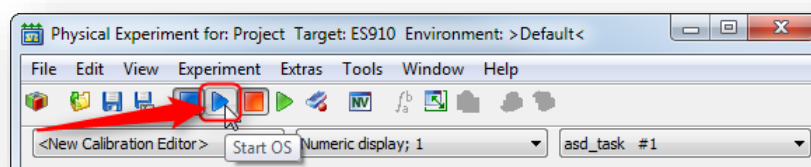
4. In **Physical Experiment**, on **dT_asd_task**: Right mouse button click → **Measure**



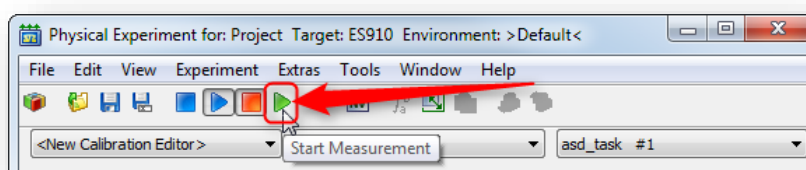
5. Result:



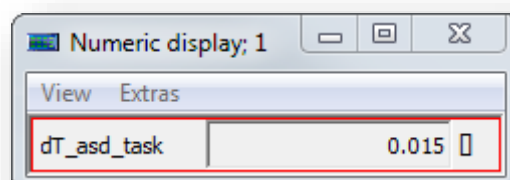
6. In **Physical Experiment** → **Tool bar** → **Start OS**



7. In **Physical Experiment** → **Tool bar** → **Start Measurement**



8. Result: **dT_asd_task** is updated with current measured value



Do you still have questions?

- You will find **further FAQ articles** on the ETAS homepage: www.etas.com/en/faq
- **Movies** corresponding to FAQ articles can be found on the [ETAS YouTube channel](#)
- Please feel free to contact our Support Center, if you have further questions.
- Here you can find all information: <http://www.etas.com/en/hotlines.php>

This information (here referred to as „FAQ“) is provided without any (express or implied) warranty, guarantee or commitment regarding completeness or accuracy. Except in cases of willful damage, ETAS shall not be liable for losses and damages which may occur or result from the use of this information (including indirect, special or consequential damages).