

# Running External Applications on the DriveRecorder

## Using ES820 External Tools feature

### Do you know this challenge?

You are a tool coordinator or a calibration engineer and you want to enhance the usage of your Drive Recorder by launching one or more tools or programs (e.g. from executable or batch files) within a recording job or at Drive Recorder startup/shutdown.

### Our Solution – ES820 external tools feature

Within your DriveRecorder ConfiguratorTool you are able to transfer the application files for Windows 7 Embedded Systems and to configure when they may be launched.

### How does it work?

#### Example: Running an external application within a recording job

Create or import your application and add all the relevant files in one unique folder. Save it on your PC in the folder tree `/ETASData/DriveRecorder Configurator Installation7.2/ExternalTools` (Figure 1).

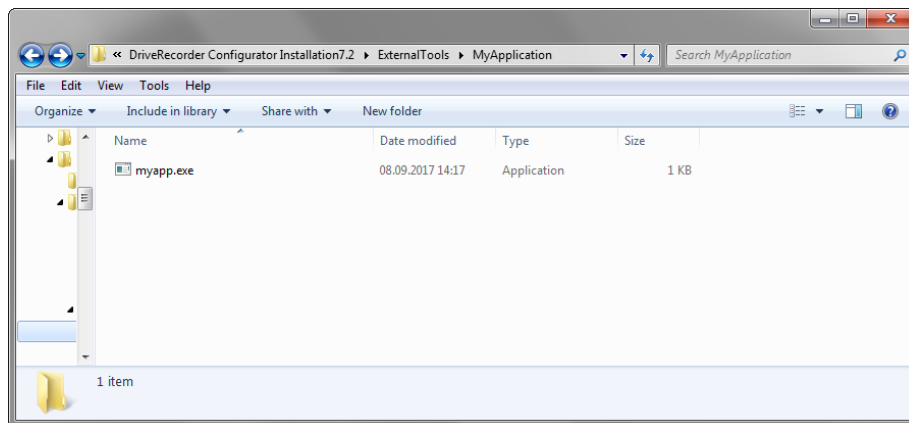


Figure 1

Open the ConfiguratorTool and transfer the whole folder to the ES820 in the same folder `.../ExternalTools` one (Figure2).

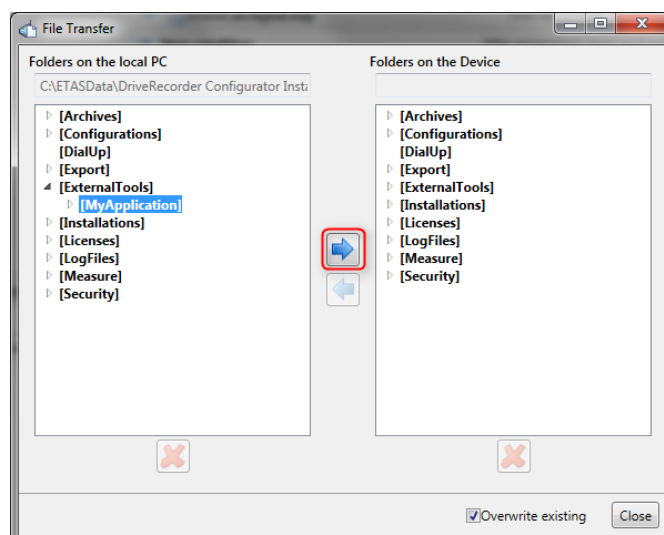


Figure 2

# Running External Applications on the DriveRecorder

## Using ES820 External Tools feature

Add your External Tool in the *Configuration Tool Settings* (Figure 3):

- Add and give it a meaningful name
- Fill (at least) the Start path (where the application must be included) of the ES820
- Fill (at least) also the Working Directory of the ES820.

Select *Store to Default Settings* and *Save & Close*.

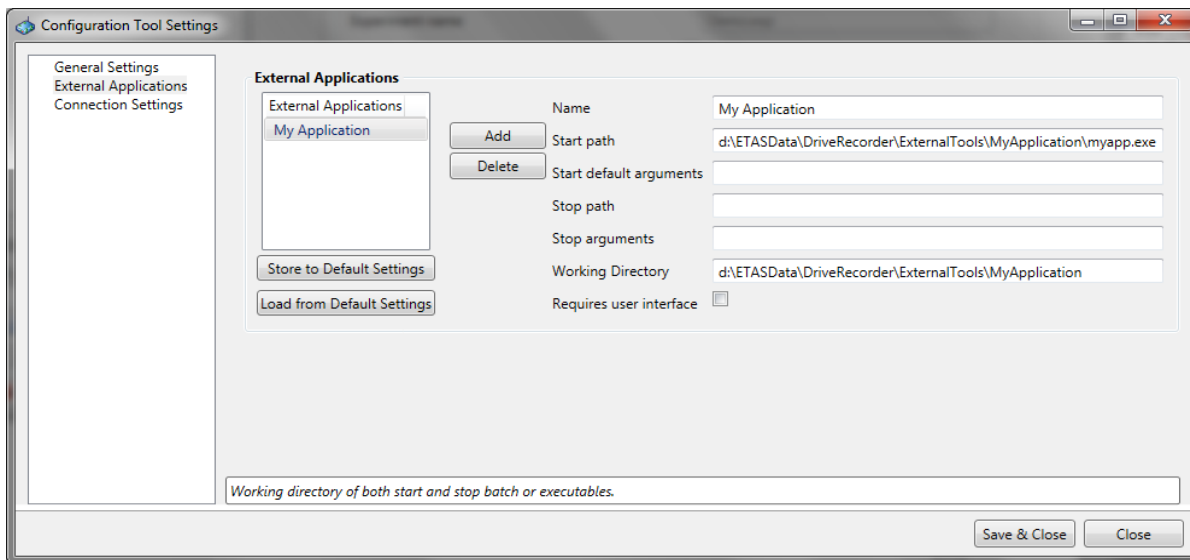


Figure 3

Open the HW Configuration Settings of the DriveRecorder and select the *External Applications* menu item:

- Push *Load from Default Settings*
- The application must be activated by *Activate the External Tools*
- *Apply to DriveRecorder* and/or *Save to file & Close*.

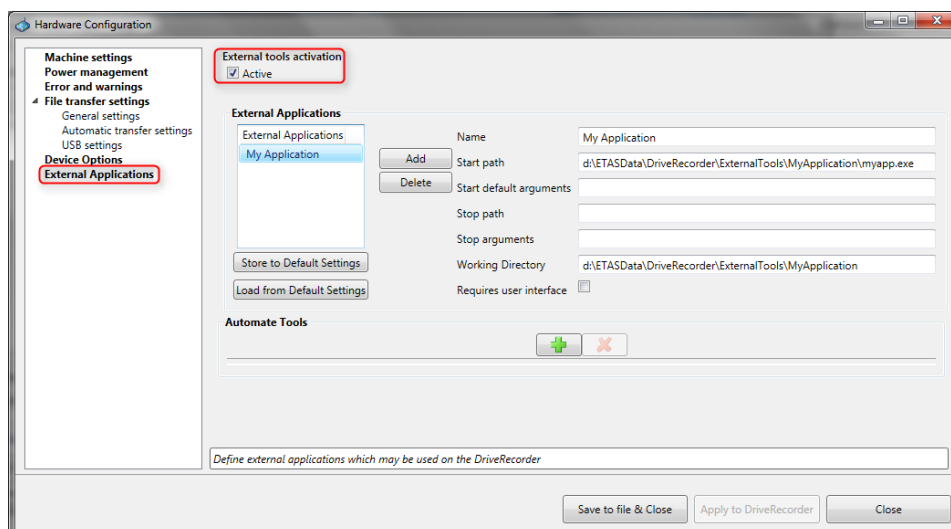


Figure 4

# Running External Applications on the DriveRecorder

## Using ES820 External Tools feature

A new "+" (blue Plus) symbol is added to the menu bar, which allows the user to insert an External Tool into the Recording Job (Figure 5).

It can be inserted before, after or in-between the INCA export files or even stand-alone!

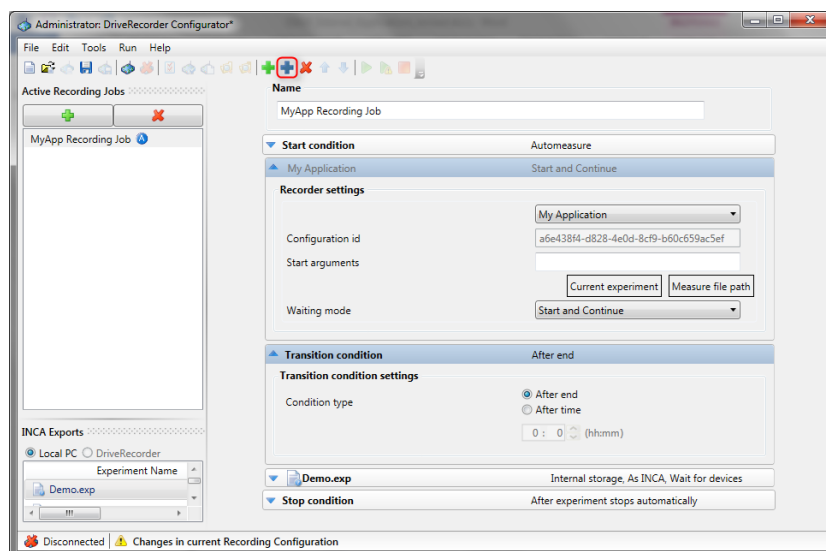


Figure 5

*Apply the Recording Job.* And now, you are ready to go with your DriveRecorder!



### Tools used

- DriveRecorder ConfiguratorTool 7.2.5.147
- ES820 SP5.1 (7.2.5.1.29)

### Downloads

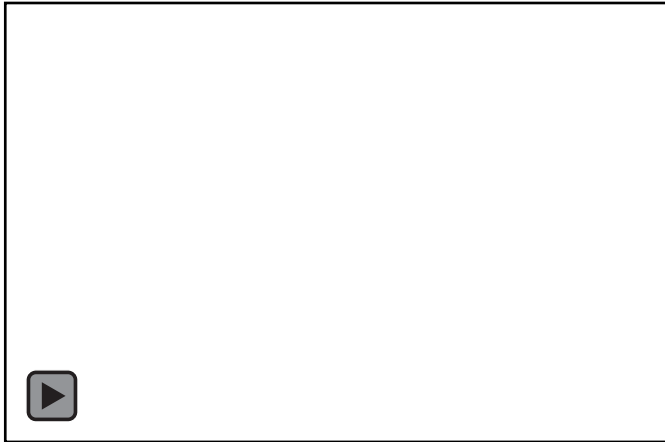
Videos: External Tools Configuration and Usage (see next page or [Download Center](#))

- 1\_Ext\_tool\_Transfer
- 2\_Ext\_tool\_Config\_settings
- 3\_Ext\_tool\_DR\_settings
- 4\_Ext\_tool\_RecJob
- 5\_Ext\_tool\_Automated\_tool

### Your ETAS Contact

Chiara Fiorini  
Tel. +49 711 34232996  
[chiara.fiorini@etas.com](mailto:chiara.fiorini@etas.com)

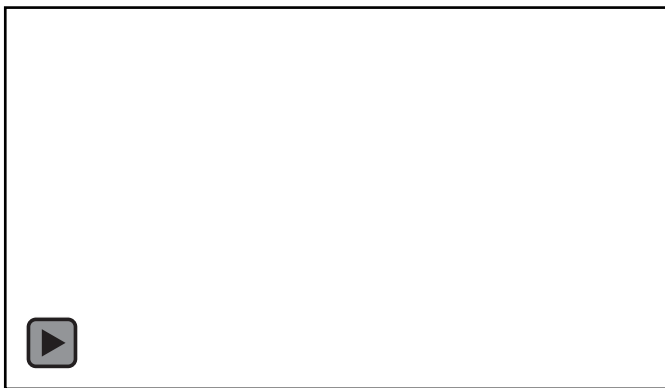
[www.etas.com](http://www.etas.com)



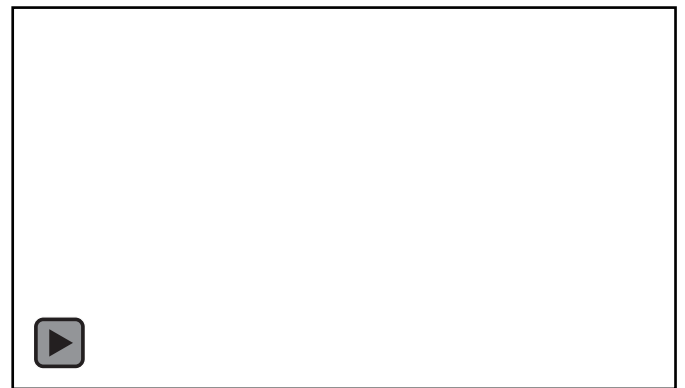
*1\_Ext\_tool\_Transfer*



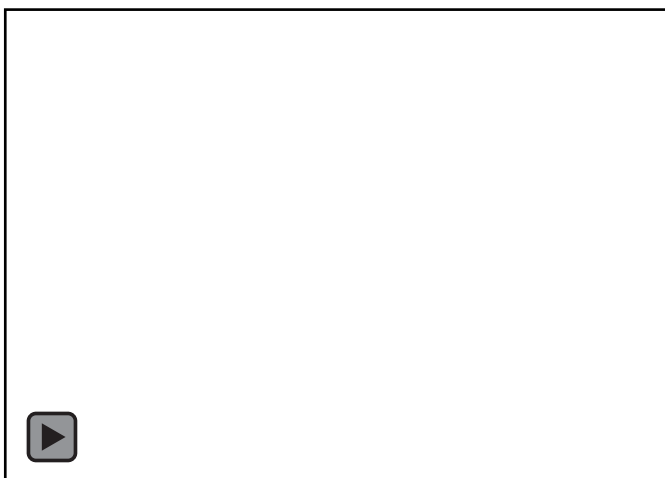
*2\_Ext\_tool\_Config\_settings*



*3\_Ext\_tool\_DR\_settings*



*4\_Ext\_tool\_RecJob*



*5\_Ext\_tool\_Automated\_tool*