

DriveRecorder CAN-Output

Sending CAN frames from ES820

Do you know this challenge?

You are a calibration engineer and you want your DriveRecorder to send (once) some CAN frames when the recording starts and/or stops, e.g. for activating and/or deactivating a sensor. That may be done using the same CAN Port used for CAN-Monitoring, without using other devices and cables.

Our Solution – ES820 & INCA CAN-Output feature

The ES820 DriveRecorder is able to send non-cyclic CAN frames thanks to the INCA built-in CAN-Output feature and any ETAS CAN Hardware.

How does it work?

An example of our solution: send a CAN frame for activating and deactivating a sensor with an ES581.4

First of all, you have to add a new List of CAN Messages to your INCA Database (Fig.1) and create your CAN message(s) by inserting the relevant CAN-ID, type of frame and data (the length is automatically calculated) as in Fig.2.

Do it twice in order to have one CAN Message List for the activation and one for the deactivation of the sensor.

Note: You can always rename the message lists with meaningful names in order not to confuse and misassign them. In this example they have been renamed "CAN_start_sensor" and "CAN_stop_sensor" (Fig.4).

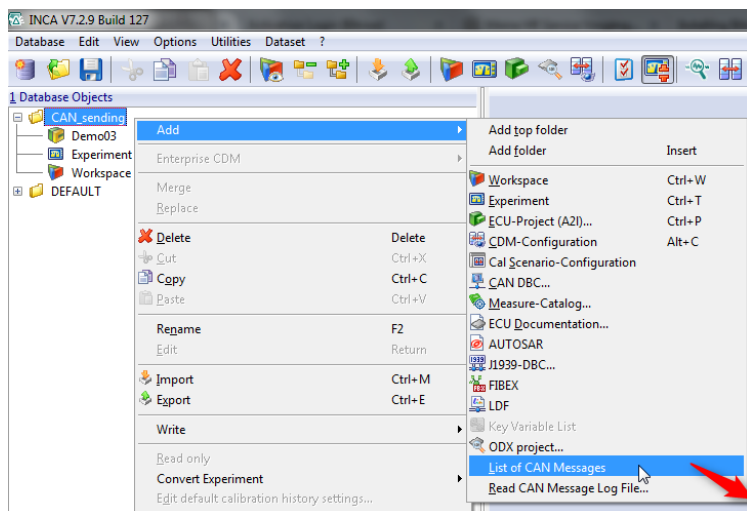


Fig. 1

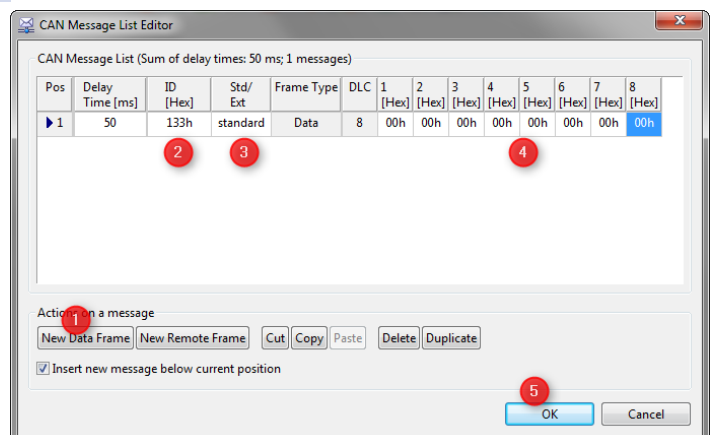


Fig. 2

DriveRecorder CAN-Output

Open the Hardware Configuration: there you have to add your CAN Device (which may be already there) and add the CAN-Output channel (Fig.3).

In the Experiment Environment export the DriveRecorder .exp file by **Hardware -> Drive Recorder -> (Optimized) Export...** (Fig. 5).

Keep the focus on the *CAN-Output* device, and in the right window please select the Tab **4. Pre/Post List**. Here please assign the start sequence to the Pre-List, and the stop sequence to the Post-List (Fig.4), and press **Apply**.

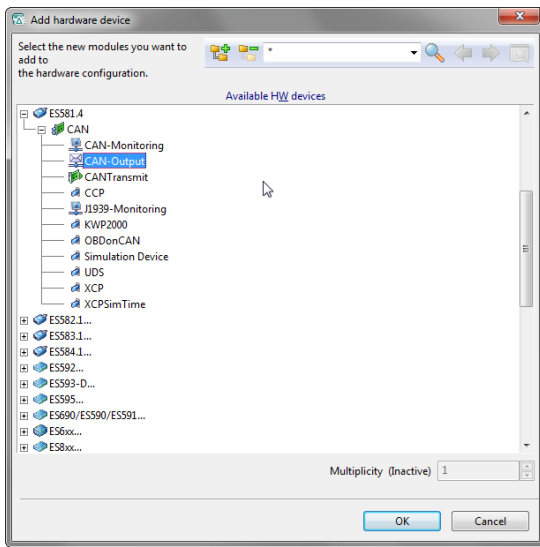


Fig. 3

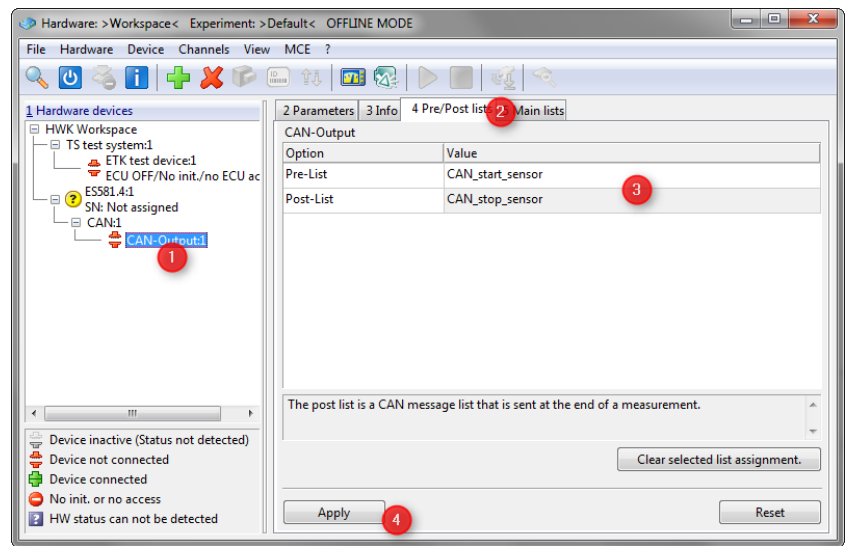


Fig.4

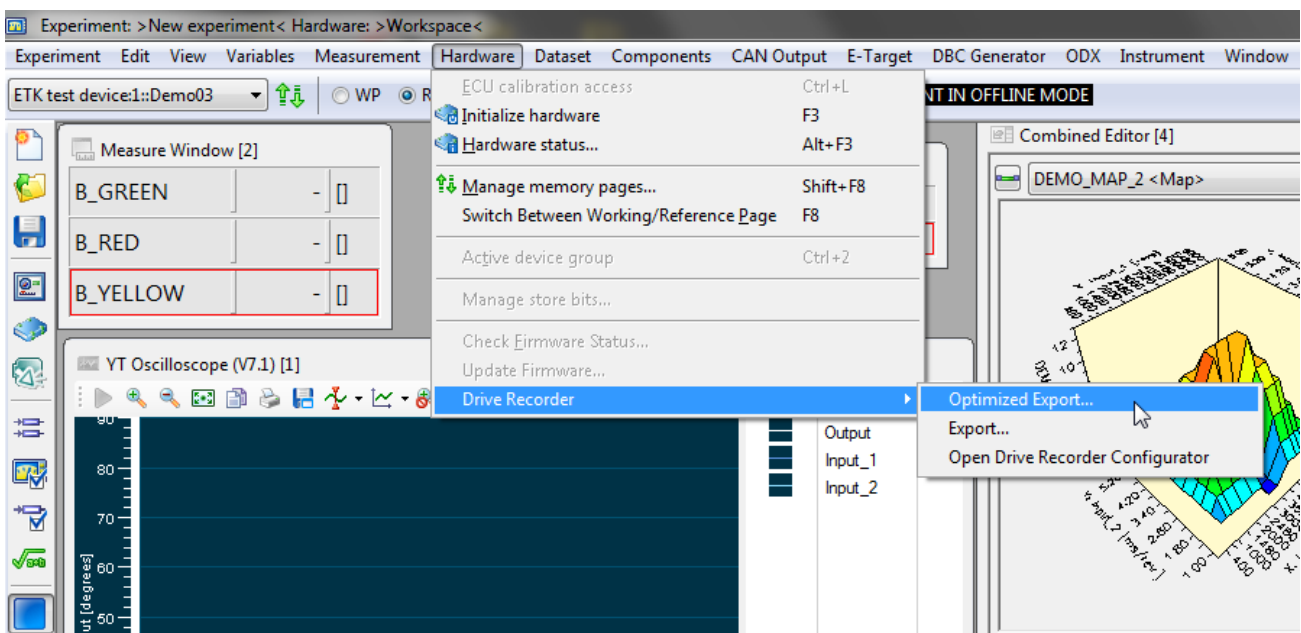


Fig. 5

DriveRecorder CAN-Output

In the DRConfigurator Tool:

- create a new Recording Job
- double-click or drag&drop the INCA export file to the right side of the page
- set the *Start condition as Automeasure*
- *File -> Apply the recording job to the DriveRecorder*

Your ES820 is ready, and at the next boot will be able to send the CAN frames at the recording start and stop.



ID [Hex]	Std/Ext	Frame Type	DLC	1 [Hex]	2 [Hex]	3 [Hex]	4 [Hex]	5 [Hex]	6 [Hex]	7 [Hex]	8 [Hex]
133h	standard	Data	8	00h	00h	00h	00h	00h	00h	00h	00h

Tools used

- HSP 11.9.0 (for evoking the ES891 Remote Management)
- DriveRecorder ConfiguratorTool 7.2.9
- ES820 SP9
- ES581.4

Your ETAS Contact

Chiara Fiorini

Tel. +49 711 3423 – 2996

Email: chiara.fiorini@etas.com