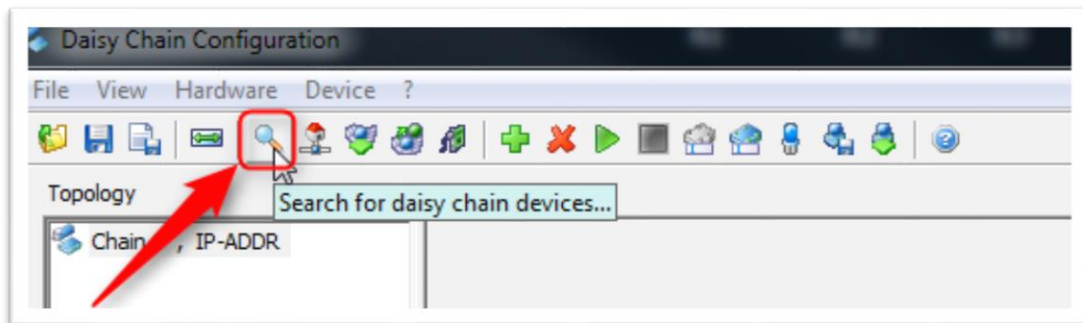


## ES930: Sensor at analog input channel 5 is not working

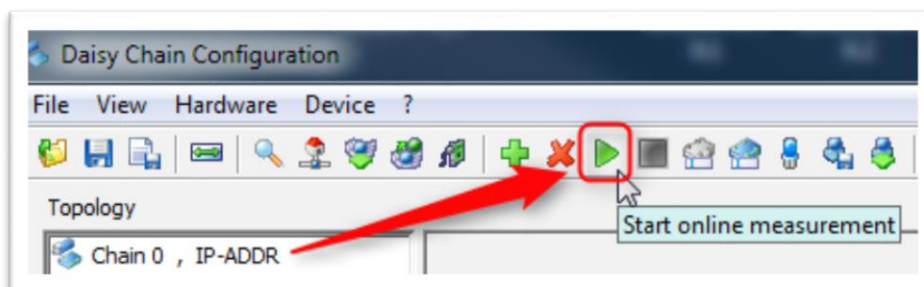


### Question:

- Connected an analog sensor to analog input channel 5 (Pin 1) at ES930 but the measurement does not work
- First, I made sure that the **PC finds ES930** successfully
  - It is connected
  - For example, it is visible in Daisy Chain Standalone Tool > Search for daisy chain devices...



- Next, I tested measurement via temperature channel
  - I **can measure** values via the temperature channel
  - For example, in Daisy Chain Standalone Tool > Start online measurement



- Can you provide me an **example configuration** file for a sensor that is connected to analog input channel?

**Answer:**

- Is sensor's ground (GND) connected to the according ground pin at ES930?
  - At the ES930, every sensor has his own ground pin
  - Every sensor has to be connected to his **specific ground pin**
  - You can find the **pin assignments** in the User Guide (see image below):

14.1.4 "AI 5-8" connection

Fig. 14-4 "AI 5-8" connection

Typo: These are "input" channels

ES930.1 "AI 5-8" connection		Meaning
Pin	Signal	
1	AI_CH5	Analog <b>output</b> channel 5
2	AI_CH6	Analog <b>output</b> channel 6
3	AI_CH7	Analog input channel 7
4	AI_CH8	Analog input channel 8
5	N.C.	Not connected
6	AI_CH5_GND	Analog input channel 5, ground
7	AI_CH6_GND	Analog input channel 6, ground
8	AI_CH7_GND	Analog input channel 7, ground
9	AI_CH8_GND	Analog input channel 8, ground
10	N.C.	Not connected
11	SensorSupply_CH3	Sensor power supply, channel 3
12	SensorSupply_CH3_GND	Sensor power supply, channel 3, ground
13	SensorSupply_CH4	Sensor power supply, channel 4
14	SensorSupply_CH4_GND	Sensor power supply, channel 4, ground
15	N.C.	Not connected

- There is a typo in the pin assignment table in the User Guide
- To put it clear:
  - For a sensor at analog input channel 5 (pin 1): Connect ground to pin (6)
  - For a sensor at analog input channel 6 (pin 2): Connect ground to pin (7)
  - For a sensor at analog input channel 7 (pin 3): Connect ground to pin (8)
  - For a sensor at analog input channel 8 (pin 4): Connect ground to pin (9)

**Do you still have questions?**

- You will find further FAQ here: [www.etas.com/en/faq](http://www.etas.com/en/faq)
- Please feel free to contact our Support Center, if you have further questions.
- Here you can find all information: <http://www.etas.com/en/hotlines.php>

**Disclaimer:**

*This information (here referred to as „FAQ“) is provided without any (express or implied) warranty, guarantee or commitment regarding completeness or accuracy. Except in cases of willful damage, ETAS shall not be liable for losses and damages which may occur or result from the use of this information (including indirect, special or consequential damages).*