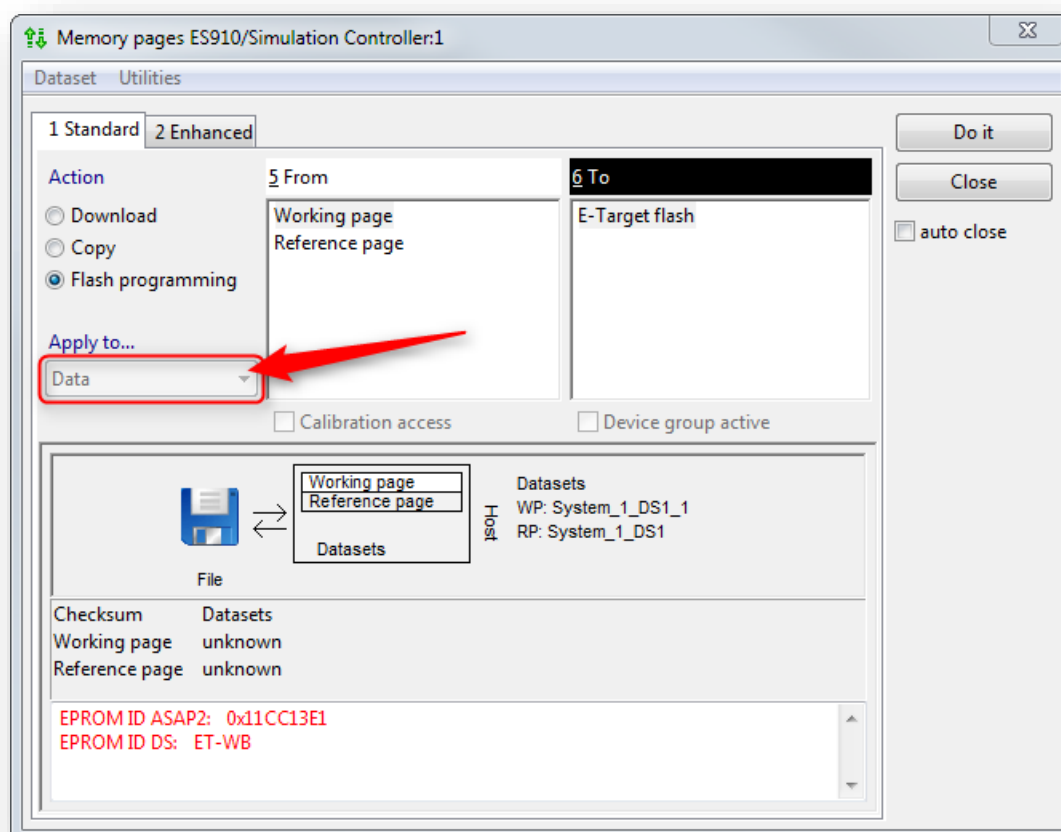


INCA: In dialog 'Memory pages' the field 'Apply to...' is disabled



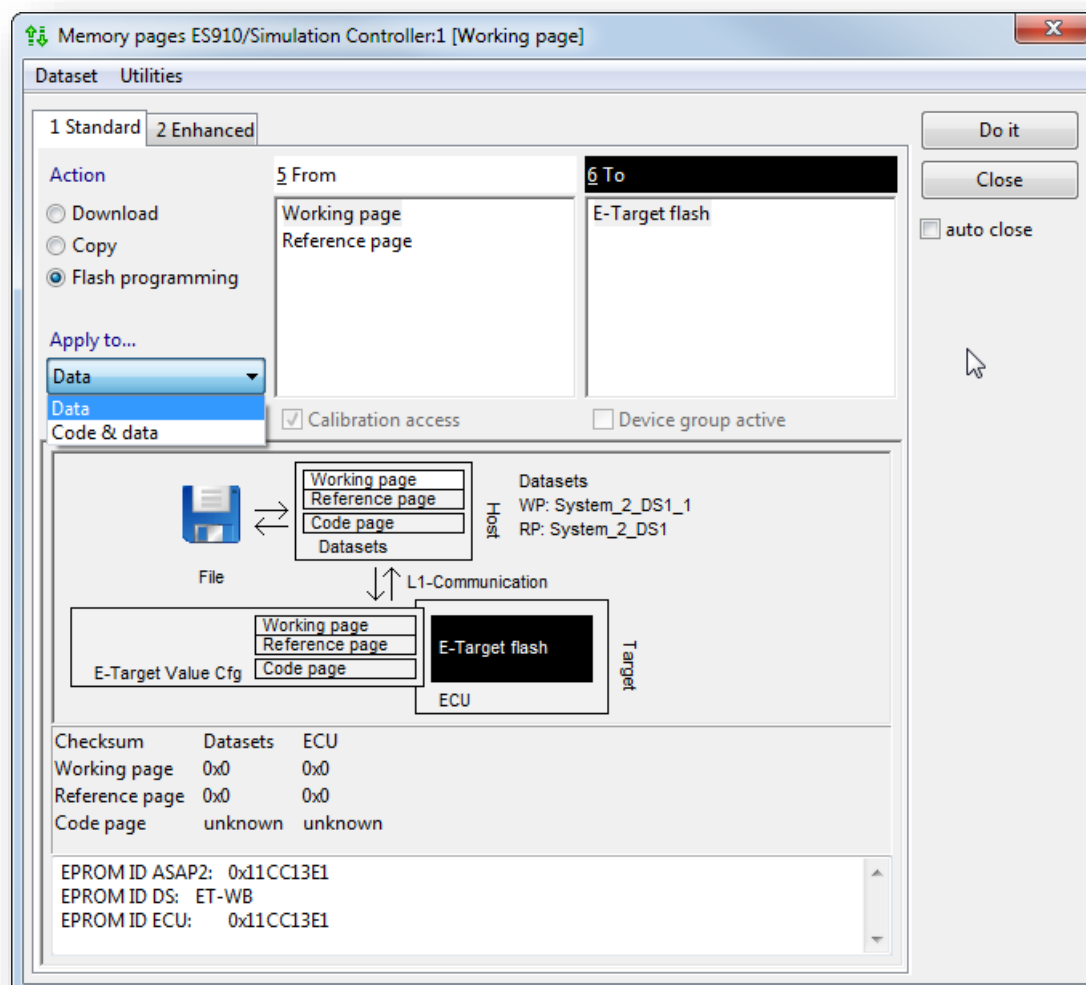
Question

- In dialog **Memory pages**: Field **Apply to...** is disabled



- Option **Data** is grey
- I cannot open the drop down list

- I want to change the value from **Data** to **Data and Code** but the field is not active





Answer

- Most common root causes are:
 - There is no **connection** between PC and the hardware device
 - The **power** supply of the hardware device is not turned on
- Check the connection between hardware device and PC
- Check if power supply of hardware device is turned on



Do you still have questions?

- You will find **further FAQ articles** on the ETAS homepage: www.etas.com/en/faq
- **Movies** corresponding to FAQ articles can be found on the [ETAS YouTube channel](#)
- Please feel free to contact our Support Center, if you have further questions.
- Here you can find all information: <http://www.etas.com/en/hotlines.php>

This information (here referred to as „FAQ“) is provided without any (express or implied) warranty, guarantee or commitment regarding completeness or accuracy. Except in cases of willful damage, ETAS shall not be liable for losses and damages which may occur or result from the use of this information (including indirect, special or consequential damages).