

## **ETAL6 R03\_EN**

ETAL6 LFAST ECU Adapter, Erni - SAMTEC (50fc - 10fc), 0m217



## **Copyright**

---

The data in this document may not be altered or amended without special notification from ETAS GmbH. ETAS GmbH undertakes no further obligation in relation to this document. The software described in it can only be used if the customer is in possession of a general license agreement or single license. Using and copying is only allowed in concurrence with the specifications stipulated in the contract.

Under no circumstances may any part of this document be copied, reproduced, transmitted, stored in a retrieval system or translated into another language without the express written permission of ETAS GmbH.

© Copyright 2014 ETAS GmbH, Stuttgart

The names and designations used in this document are trademarks or brands belonging to the respective owners.

Document ETAL6 R03\_EN – 09.2014

---

## Contents

- 1 Introduction.....5
  - 1.1 3D View.....5
- 2 Technical Data .....6
  - 2.1 ECU Connector.....6
  - 2.2 Active Circuitry.....6
  - 2.3 Mechanical Drawings .....7
  - 2.4 Operating Temperature Range .....7
- 3 Ordering Information.....8
- 4 ETAS Contact Addresses .....9

---

## Figures

Figure 1: 3D View ..... 5

Figure 2: SAMTEC SFM connector pin orientation ..... 6

Figure 3: ETAL6 Bottom View ..... 7

Figure 4: ETAL6 Side View ..... 7

Figure 5: ETAL6 detailed dimensions ..... 7

## 1 Introduction

---

Adapts an ECU with a 10 pin SAMTEC TFM-105 connector to an ETK-S21 with a 50 pin Erni connector.

**Note:**

*If this adapter is to be used with LFAST care must be taken that signal routing on ECU is in compliance with LFAST routing guidelines.*

### 1.1 3D View

---

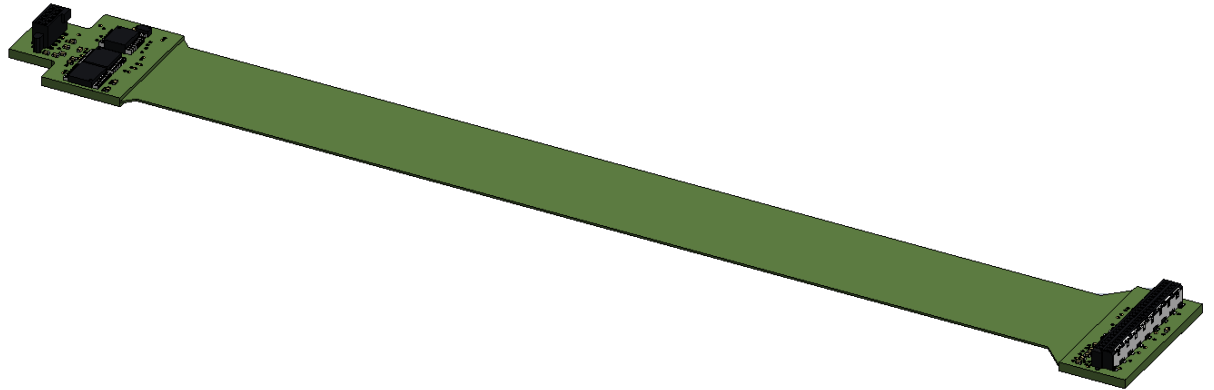


Figure 1: 3D View

## 2 Technical Data

---

### 2.1 ECU Connector

---

In order to be able to use the ETK adapter ETAL6 in the ECU, a 10 pin SAMTEC connector (e.g. TFM-105-02-S-D-P) must be available on the ECU. The connector pin orientation is shown in Figure 2, and the connector pin mapping is shown in Table 1.

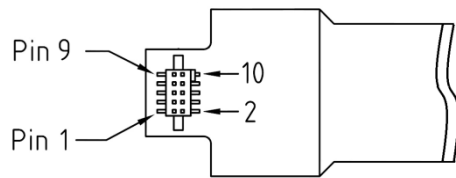


Figure 2: SAMTEC SFM connector pin orientation

Pin Number	LFAST Mode
1	GND
2	DRCLK_ECU
3	RXD_ECU-
4	RXD_ECU+
5	TXD_ECU+
6	TXD_ECU-
7	WDGDIS
8	VCC (Sense)
9	/RESETOUT
10	/PORESET

Table 1: SAMTEC SFM connector pin map

### 2.2 Active Circuitry

---

The ETAL6 LFAST adapter contains active circuitry used for signal conversion and level shifting. Installation and handling of this adapter should be done only in an ESD safe environment.

2.3 Mechanical Drawings

Measurements in mm

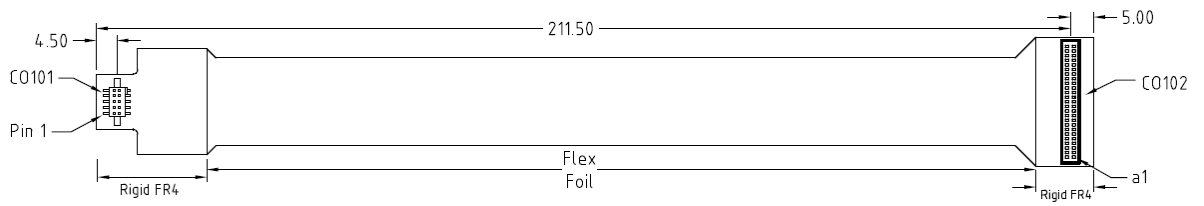


Figure 3: ETAL6 Bottom View



Figure 4: ETAL6 Side View

**Note:**

*The minimum bending radius for the flex foil is 3mm*

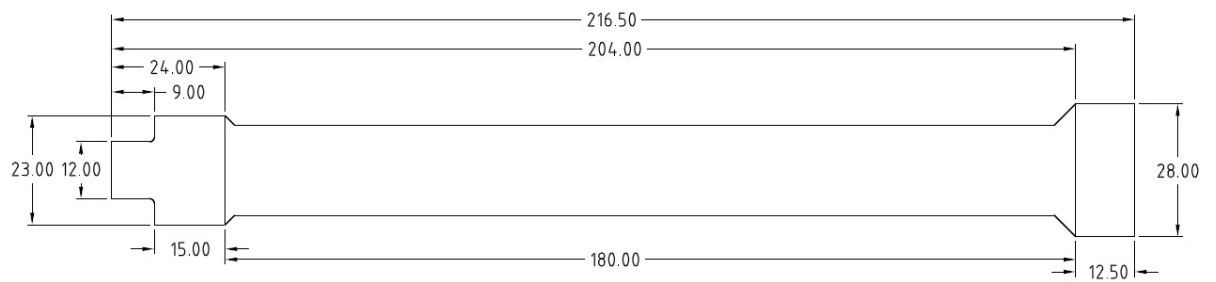


Figure 5: ETAL6 detailed dimensions

2.4 Operating Temperature Range

Condition	Temperature
Operating Temperature	-40°C - +110°C

**3** **Ordering Information**

---

<b>Short Name</b>	<b>Order - Number</b>
ETAL6	F 00K 109 558



**4 ETAS Contact Addresses**

---

*ETAS HQ*

---

ETAS GmbH

Borsigstraße 14

70469 Stuttgart

Germany

Phone: +49 711 3423 0

Fax: +49 711 3423 2106

WWW: [www.etas.com](http://www.etas.com)*ETAS Subsidiaries and Technical Support*

---

For details of your local sales office as well as your local technical support team and product hotlines, take a look at the ETAS website:

ETAS subsidiaries

WWW: [www.etas.com/en/contact.php](http://www.etas.com/en/contact.php)

ETAS technical support

WWW: [www.etas.com/en/hotlines.php](http://www.etas.com/en/hotlines.php)