
ETAC8

ETK Adapter

Order No.: F 00K 001 124

Rev.:03-0299

Copyright

The data in this document may not be altered or amended without special notification from ETAS GmbH & Co.KG. ETAS GmbH & Co.KG undertakes no further obligation in relation to this document. The hardware described in it can only be used if the customer is in possession of a general license agreement or single license.

Using and copying is only allowed in concurrence with the specifications stipulated in the contract.

Under no circumstances may any part of this document be copied, reproduced, transmitted, stored in a retrieval system or translated into another language without the express written permission of ETAS GmbH & Co.KG.

© **Copyright** 1998 ETAS GmbH & Co.KG, Stuttgart. All rights reserved.

The names and designations used in this document are trademarks or brands belonging to the respective owners.

Contents

1	General	4
1.1	Connection	4
1.2	Detection of the ETK	4
2	Connector Pinout	5
2.1	Pinout SAMTEC connector ST2 to ECU	5
2.2	Pinout ST1 (Plug Flat Strip Cable) to ETK	6
2.3	Test Pins	6
3	Schematic, Bridges	7
3.1	Schematic	7
3.2	View of Bridges and Test Pins	8
3.3	Assembly Plan (upper part)	8
3.4	Assembly Plan (lower part)	8
4	Measurement Drawing	9

1 General

The ETAC8 adapter connects an ECU with an ETK6 or ETK7.

1.1 Connection

In order to be able to configure the ETK adapter ETAC8 in the ECU, a SAMTEC connector must be available on the ECU (Order No.: **TFM-125-02-S-D**).

1.2 Detection of the ETK

A pull down resistor at the /BHE signal is available on the ETK adapter, enabling the user to check from the ECU side, whether an ETK is connected.

2 Connector Pinout

2.1 Pinout SAMTEC connector ST2 to ECU

Pin	Signal	Pin	Signal
1	/SGRES	2	/BHE
3	GND	4	GND
5	SGA15	6	SGA14
7	SGA13	8	SGA12
9	SGA11	10	SGA10
11	SGA9	12	SGA8
13	SGA7	14	SGA6
15	SGA5	16	SGA4
17	SGA3	18	SGA2
19	SGA1	20	SGA0
21	SGA16	22	SGA18
23	SGA17	24	SGA19
25	/SGCS (Flash)	26	USG
27	/SGWCS (ext. RAM)	28	GND
29	SGD14	30	SGD15
31	SGD12	32	SGD13
33	SGD10	34	SGD11
35	SGD8	36	SGD9
37	SGD6	38	SGD7
39	SGD4	40	SGD5
41	SGD2	42	SGD3
43	SGD0	44	SGD1
45	/SGRD	46	USG
47	/SGWR	48	(ALE)
49	GND	50	GND

2.2 Pinout connector ST1 to ETK

Pin	Signal	Pin	Signal
1	GND	2	SGD0
3	SGD1	4	SGD2
5	SGD3	6	SGD4
7	SGD5	8	SGD6
9	SGD7	10	SGD8
11	SGD9	12	SGD10
13	SGD11	14	SGD12
15	SGD13	16	SGD14
17	SGD15	18	GND
19	SGA0	20	SGA1
21	SGA2	22	SGA3
23	SGA4	24	SGA5
25	SGA6	26	SGA7
27	SGA8	28	SGA9
29	SGA10	30	SGA11
31	SGA12	32	SGA13
33	SGA14	34	SGA15
35	SGA16	36	SGA17
37	SGA18	38	SGA19
39	SGSIZ	40	/SGCS
41	/SGRD	42	GND
43	/SGWCS	44	GND
45	/SGRES	46	USG
47	/SGRW	48	USG
49	ALE	50	GND

2.3 Test Pins

Pin	Signal
P1	SGA19
P2	/BHE
P3	/SGWCS

3 Schematic, Bridges

3.1 Schematic

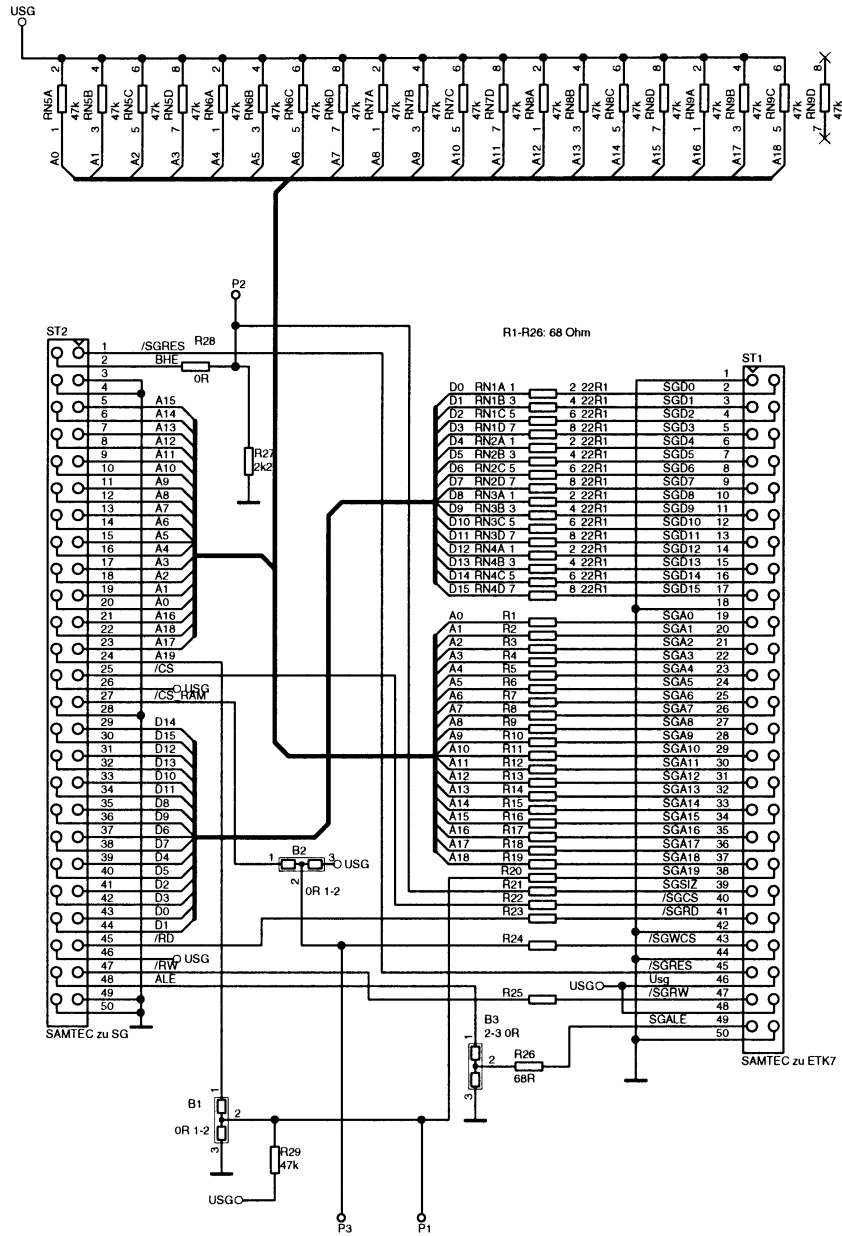


Figure 3-1 Schematic

3.2 View of Bridges and Test Pins

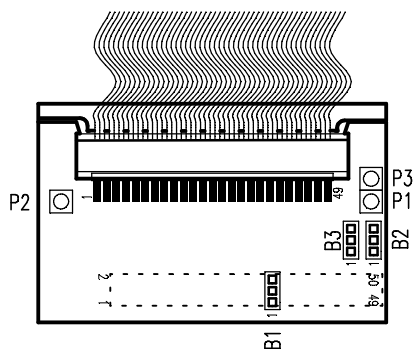


Figure 3-2 Bridges and Test Pins

3.3 Assembly Plan (upper part)

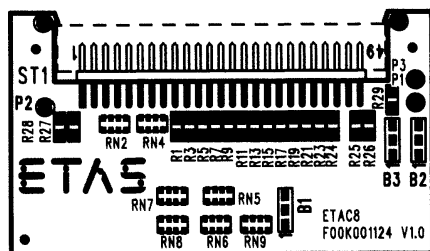


Figure 3-3 Assembly Plan (upper part)

3.4 Assembly Plan (lower part)

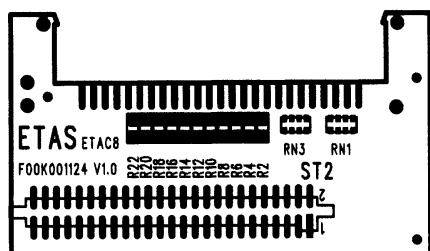


Figure 3-4 Assembly Plan (lower part)

4 Measurement Drawing

measured in mm

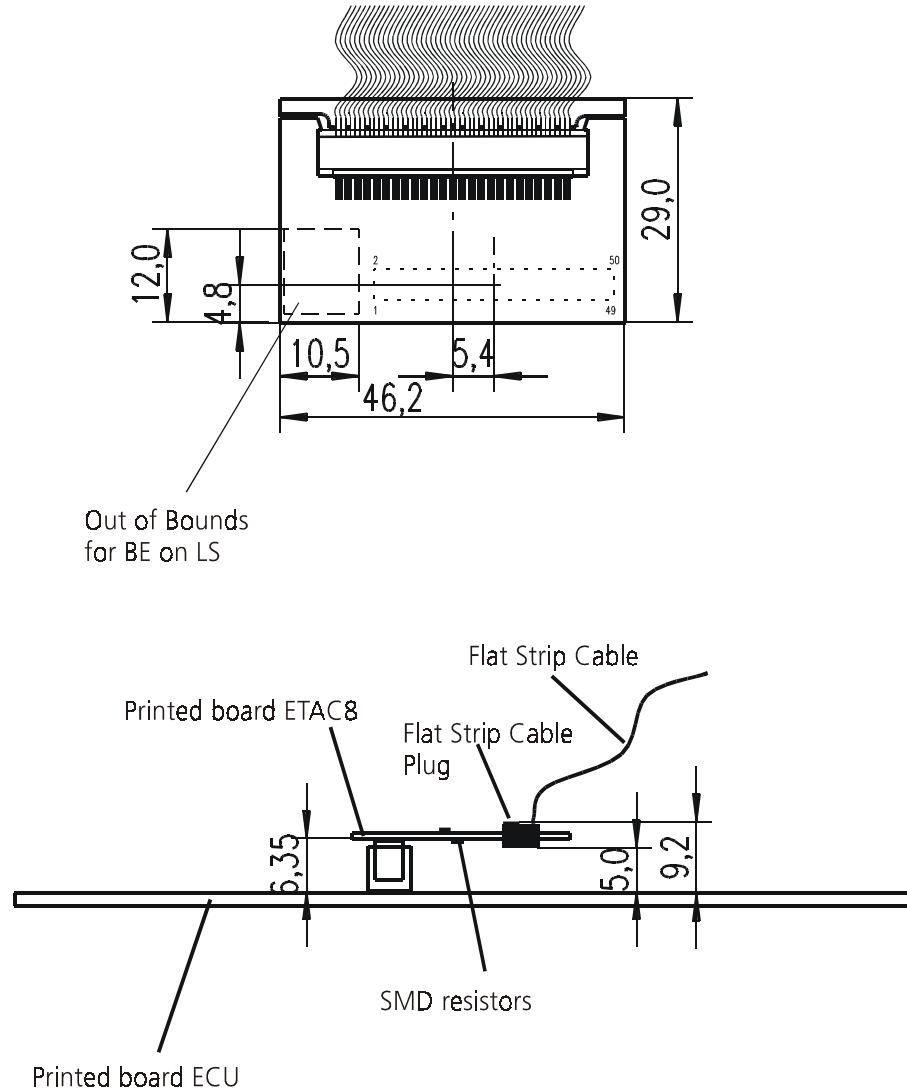


Figure 4-1 Measurement Drawing