



ETAS Entwicklungs- und
Applikationswerkzeuge
für elektronische Systeme
GmbH & Co.KG



ETAC9

ETK Adapter

Order No.: F 00K 001 529

Rev.:02-0100



Copyright

The data in this document may not be altered or amended without special notification from ETAS GmbH & Co.KG. ETAS GmbH & Co.KG undertakes no further obligation in relation to this document. The hardware described in it can only be used if the customer is in possession of a general license agreement or single license.

Using and copying is only allowed in concurrence with the specifications stipulated in the contract.

Under no circumstances may any part of this document be copied, reproduced, transmitted, stored in a retrieval system or translated into another language without the express written permission of ETAS GmbH & Co.KG.

© **Copyright** 2000 ETAS GmbH & Co.KG, Stuttgart. All rights reserved.

The names and designations used in this document are trademarks or brands belonging to the respective owners.

Contents

1	General	4
1.1	View	4
2	Connector Pinout	5
2.1	Pinout AMP connector ST2 to ECU	5
2.2	Pinout connector ST1 to ETK	6
2.3	Power Pins	6
3	Schematic, Assembly Plan	7
3.1	Schematic	7
3.2	Assembly Plan (upper part)	8
3.3	Assembly Plan (lower part)	8
4	Measurement Drawing	9

1 General

The ETAC9 adapter connects an ETK7 with an 90 pin connector. It is a 3-Row Connector from AMP with the name "BOX RECEPTACLE ASSY"

1.1 View

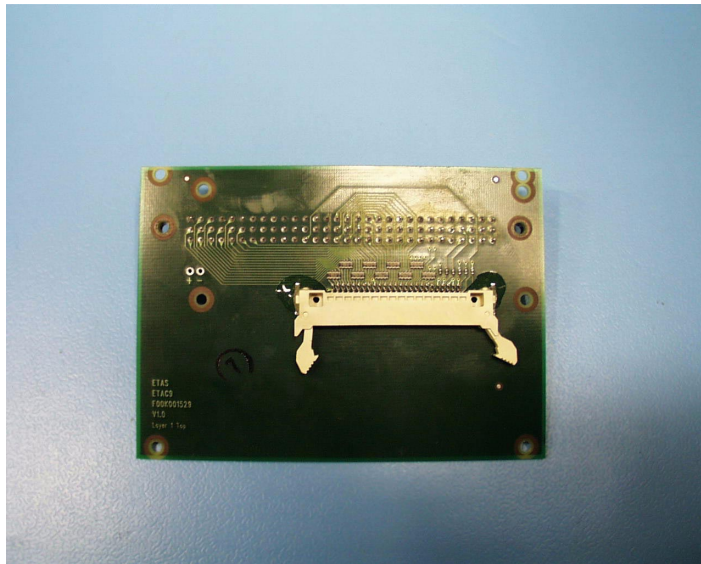


Figure 1-1 Upper Side

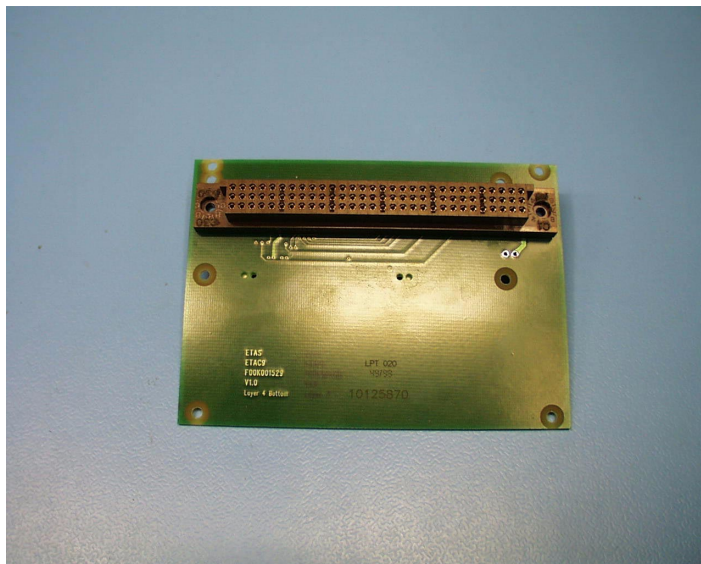


Figure 1-2 Lower Side

2 Connector Pinout

2.1 Pinout AMP connector ST2 to ECU

Pin			Signal	Pin	Signal
A1	GND	B1	D0	C1	D1
A2	D2	B2	D3	C2	D4
A3	D5	B3	D6	C3	D7
A4	GND	B4	D8	C4	D9
A5	D10	B5	D11	C5	D12
A6	GND	B6	D13	C6	D14
A7	DS	B7	GND	C7	D15
A8	GND	B8		C8	
A9		B9	GND	C9	
A10	GND	B10	SIZ	C10	
A11		B11	GND	C11	
A12	GND	B12		C12	/SGRES
A13		B13	A15	C13	A14
A14	GND	B14	A13	C14	A12
A15	A11	B15	A10	C15	A9
A16	A8	B16	A7	C16	A6
A17	GND	B17	A5	C17	A4
A18	A3	B18	A2	C18	A1
A19	A0	B19		C19	
A20	GND	B20		C20	
A21		B21	A19	C21	A18
A22	A17	B22	A16	C22	R/W
A23	GND	B23		C23	
A24		B24		C24	
A25	USG	B25		C25	
A26	GND	B26		C26	
A27	GND	B27	/CS0	C27	/CSBOOT
A28		B28	BATT (optional)	C28	
A29	GND	B29	GND	C29	
A30		B30	GND	C30	

2.2 Pinout connector ST1 to ETK

Pin	Signal	Pin	Signal
1	GND	2	SGD0
3	SGD1	4	SGD2
5	SGD3	6	SGD4
7	SGD5	8	SGD6
9	SGD7	10	SGD8
11	SGD9	12	SGD10
13	SGD11	14	SGD12
15	SGD13	16	SGD14
17	SGD15	18	GND
19	SGA0	20	SGA1
21	SGA2	22	SGA3
23	SGA4	24	SGA5
25	SGA6	26	SGA7
27	SGA8	28	SGA9
29	SGA10	30	SGA11
31	SGA12	32	SGA13
33	SGA14	34	SGA15
35	SGA16	36	SGA17
37	SGA18	38	SGA19
39	SGSIZ	40	/SGCS
41	/SGRD	42	GND
43	/SGWCS	44	GND
45	/SGRES	46	USG
47	/SGRW	48	USG
49	ALE	50	GND

2.3 Power Pins

Pin	Signal
TP1	Batt (connected to ST2 - B28)
TP2	GND

3 Schematic, Assembly Plan

3.1 Schematic

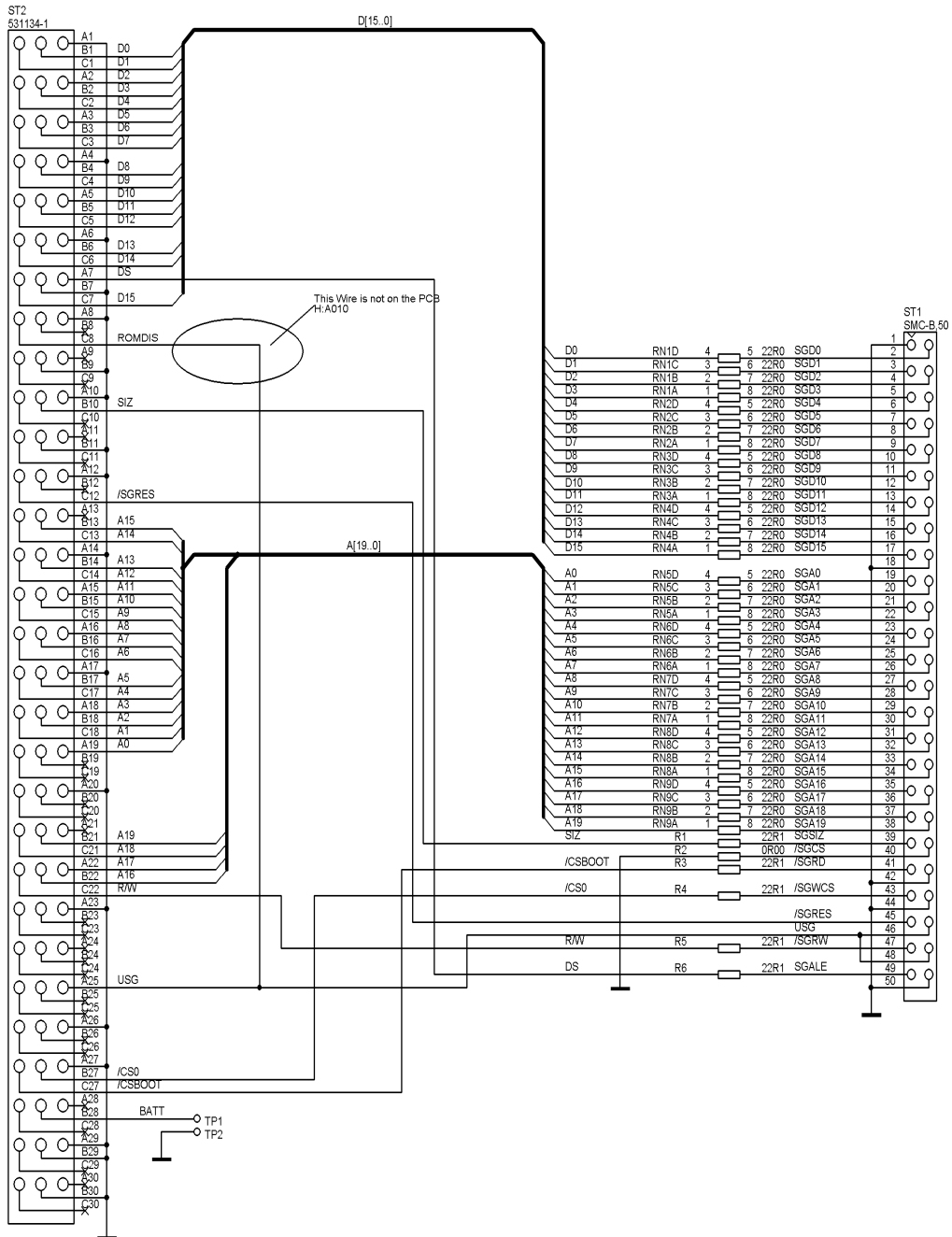


Figure 3-1 Schematic

3.2 Assembly Plan (upper part)

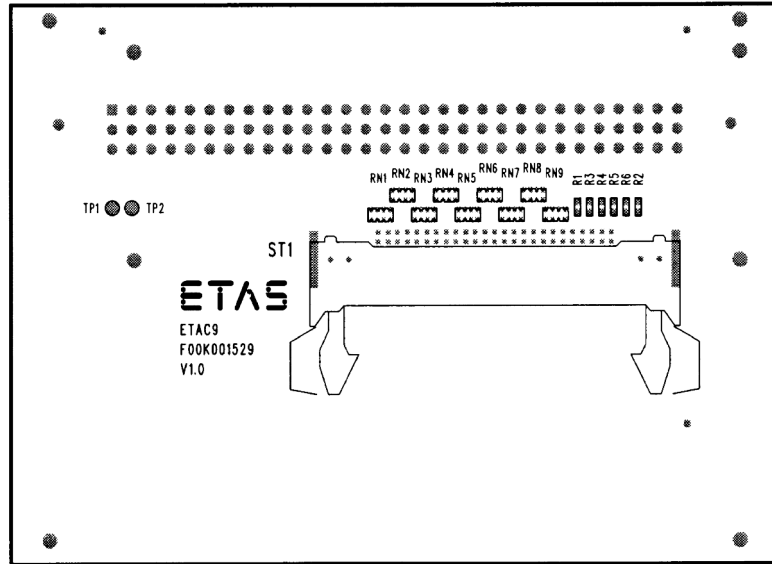


Figure 3-2 Assembly Plan (upper part)

3.3 Assembly Plan (lower part)

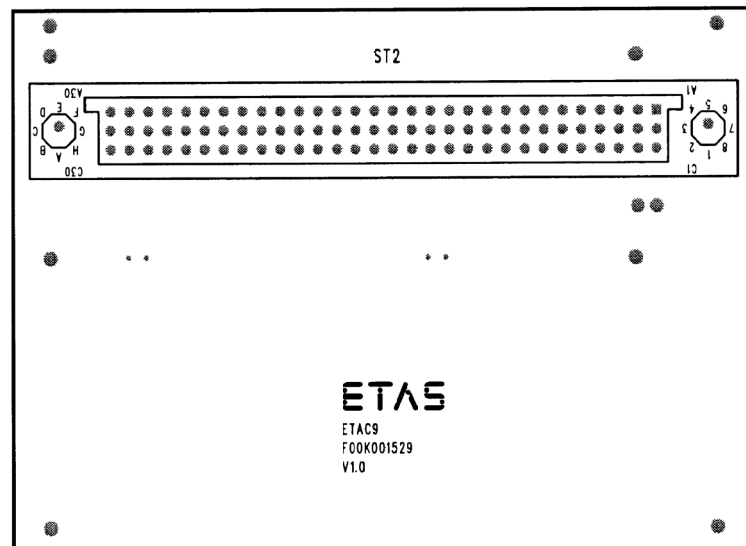


Figure 3-3 Assembly Plan (lower part)

4 Measurement Drawing

measured in mm

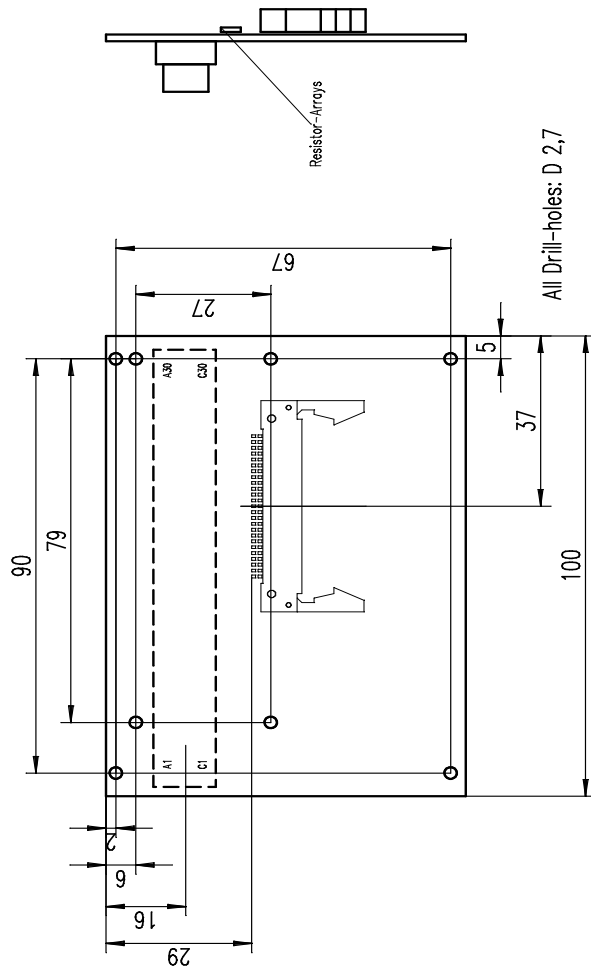


Figure 4-1 Measurement Drawing