

## **ETKS\_C2**

Waterproof case for ETKS4 and ETKS6

Data Sheet



## **Copyright**

---

The data in this document may not be altered or amended without special notification from ETAS GmbH. ETAS GmbH undertakes no further obligation in relation to this document. The software described in it can only be used if the customer is in possession of a general license agreement or single license. Using and copying is only allowed in concurrence with the specifications stipulated in the contract.

Under no circumstances may any part of this document be copied, reproduced, transmitted, stored in a retrieval system or translated into another language without the express written permission of ETAS GmbH.

© Copyright 2019 ETAS GmbH, Stuttgart

The names and designations used in this document are trademarks or brands belonging to the respective owners.

Document ETKS\_C2 R05\_EN

---

## Contents

- 1 Introduction.....5
  - 1.1 View.....5
- 2 Technical Data .....7
  - 2.1 Necessary Tools .....7
  - 2.2 Necessary accessories .....7
  - 2.3 Assembly Torque for the Case Screws .....7
  - 2.4 Measurement Drawings .....8
  - 2.5 Environment Data .....10
- 3 Ordering Information.....11
- 4 ETAS Contact Addresses .....12

---

## Figures

Figure 1: Top View closed..... 5

Figure 2: Top View open, ETK with 26pin connector ..... 5

Figure 3: Bottom View, ETK with 26pin connector ..... 5

Figure 4: Top View open, ETK with 12pin + 8pin connector ..... 6

Figure 5: Bottom View, ETK with 12pin + 8pin connector ..... 6

Figure 6: Measurement Drawing Top ..... 8

Figure 7: Measurement Drawing Side..... 8

Figure 8: Measurement Drawing Bottom ..... 9

## 1 Introduction

---

ETKS\_C2 is a waterproof case for mounting on an ECU. ETK-S4.x or an ETK-S6.x can used inside the case.

### 1.1 View

---



Figure 1: Top View closed

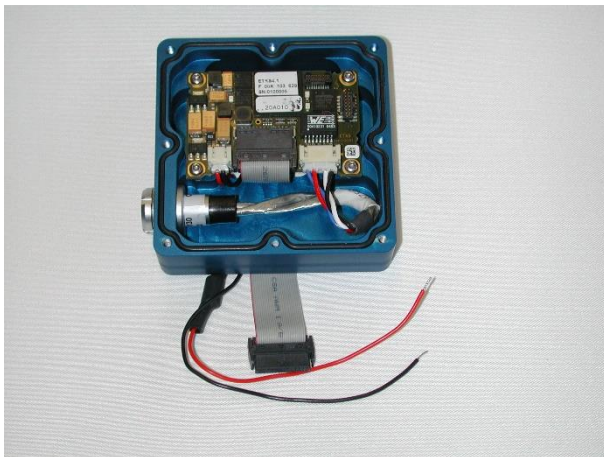


Figure 2: Top View open, ETK with 26pin connector

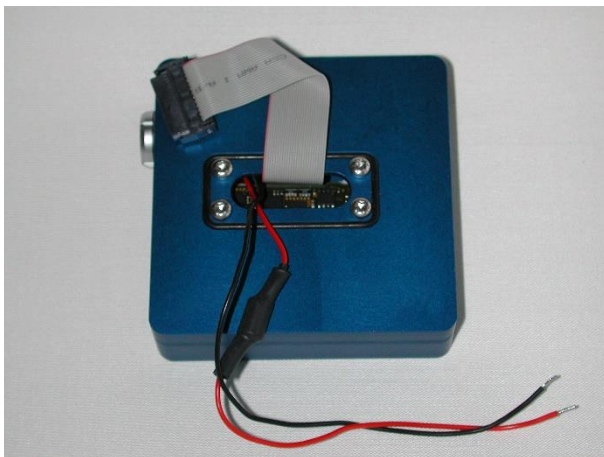


Figure 3: Bottom View, ETK with 26pin connector

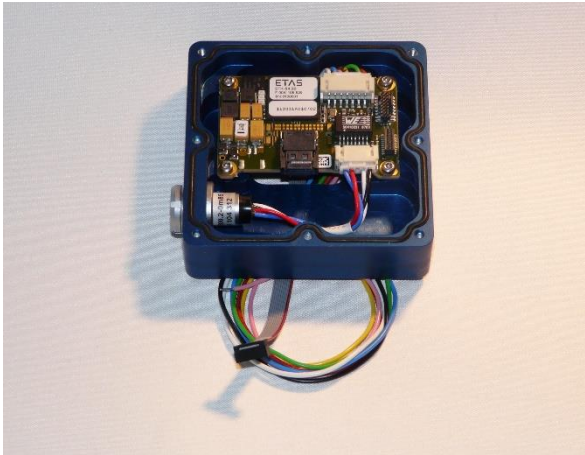


Figure 4: Top View open, ETK with 12pin + 8pin connector

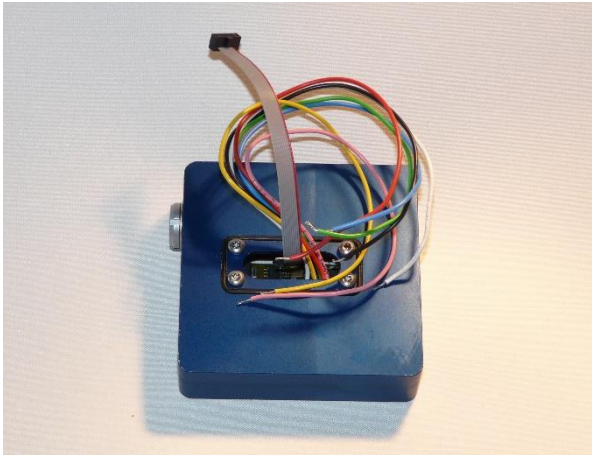


Figure 5: Bottom View, ETK with 12pin + 8pin connector

## 2 Technical Data

---

### 2.1 Necessary Tools

---

The Illustrations shows an ETK-S20.0 and Adapters. Mounting of another ETK is similar.

Necessary tools:

Lemo Spanner DCH.91.161.PA



Torx T8



Torx T10



### 2.2 Necessary accessories

---

The ETKS\_C2 case will be delivered without ETK and Cable Adapters. For the Serial ETK Interface CBAM200.2-0m085 is needed. The ETK and other cables are project specific.

### 2.3 Assembly Torque for the Case Screws

---

Screw	Tool	Recommend Assembly Torque [Nm]
Screw M2.5	Torx T8	0,90
Screw M3	Torx T10	1,35

Table 1: Assembly Torque

2.4 Measurement Drawings

measured in mm

tolerances DIN ISO2768-1 m

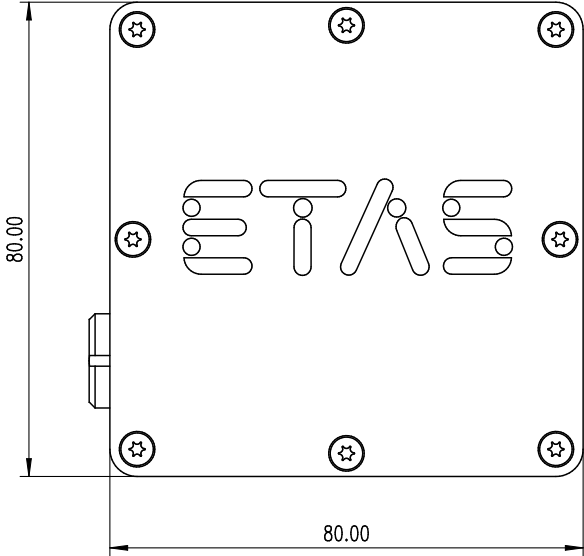


Figure 6: Measurement Drawing Top

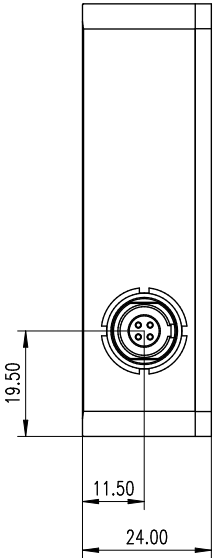


Figure 7: Measurement Drawing Side



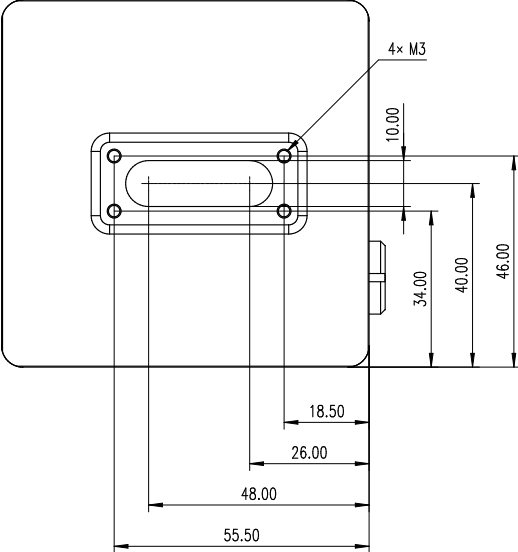


Figure 8: Measurement Drawing Bottom

2.5 Environment Data

---

<b>Condition</b>	<b>Temperature</b>
Operating Temperature	-40°C - +125°C

Table 2: Temperature Environment

### 3 Ordering Information

---

<b>Short Name</b>	<b>Order - Number</b>
ETKS_C2	F 00K 104 910
CBAM200.2-0m085	F 00K 104 312

Table 3: Ordering Information

## 4 ETAS Contact Addresses

---

### *ETAS HQ*

---

ETAS GmbH

Borsigstraße 24

70469 Stuttgart

Germany

Phone: +49 711 3423-0

Fax: +49 711 3423-2106

WWW: [www.etas.com](http://www.etas.com)

### *ETAS Subsidiaries and Technical Support*

---

For details of your local sales office as well as your local technical support team and product hotlines, take a look at the ETAS website:

ETAS subsidiaries WWW: [www.etas.com/en/contact.php](http://www.etas.com/en/contact.php)

ETAS technical support WWW: [www.etas.com/en/hotlines.php](http://www.etas.com/en/hotlines.php)