

## **ETKS\_C3 R04\_EN**

Water proofed case, designed for ETK-S4.x, ETK-S6.x, ETK-S2x, ETK-S9.x, XETK-S20.x and XETK-S4.x

## **Copyright**

---

The data in this document may not be altered or amended without special notification from ETAS GmbH. ETAS GmbH undertakes no further obligation in relation to this document. The software described in it can only be used if the customer is in possession of a general license agreement or single license. Using and copying is only allowed in concurrence with the specifications stipulated in the contract.

Under no circumstances may any part of this document be copied, reproduced, transmitted, stored in a retrieval system or translated into another language without the express written permission of ETAS GmbH.

© Copyright 2013 ETAS GmbH, Stuttgart

The names and designations used in this document are trademarks or brands belonging to the respective owners.

Document ETKS\_C3 R04\_EN

---

# Contents

- 1 Introduction.....5
  - 1.1 View.....5
- 2 Technical Data .....6
  - 2.1 Mounting ETK into the housing .....6
    - 2.1.1 Connect ECU Adapters .....7
    - 2.1.2 Screwing the Ethernet Adapter into the Housing .....8
    - 2.1.3 Plug in Ethernet Adapter .....8
    - 2.1.4 Screwing ETK into ETKS\_C3.....9
    - 2.1.5 Close Cover .....9
    - 2.1.6 Mount ETKS\_C3 at the ECU .....10
  - 2.2 Measurement Drawings .....11
  - 2.3 Environment Data .....12
- 3 Ordering Information.....13
- 4 ETAS Contact Addresses .....15

---

## Figures

Figure 1: Top View ..... 5

Figure 2: Bottom View ..... 5

Figure 3: ETK-S20.0 + ETAL1 + ETAL3 ..... 7

Figure 4: ETKS\_C3 + CBAM260.0-0m50 ..... 8

Figure 5: ETKS\_C3 + ETK-S20.0 + Adapters ..... 8

Figure 6: Screwed ETK into ETKS\_C3 ..... 9

Figure 7: Closed ETKS\_C3 ..... 9

Figure 8: View from Top ..... 11

Figure 9: View from Bottom ..... 11

Figure 10: View from Side ..... 12

## 1 Introduction

---

ETKS\_C3 is a water proofed housing for several ETKs with the same form factor like ETK-S4.x, ETK-S6.x, ETK-S2x, ETK-S9.x and XETK-S4.x. The ETKS\_C3 will be mounted at the ECU

### 1.1 View

---

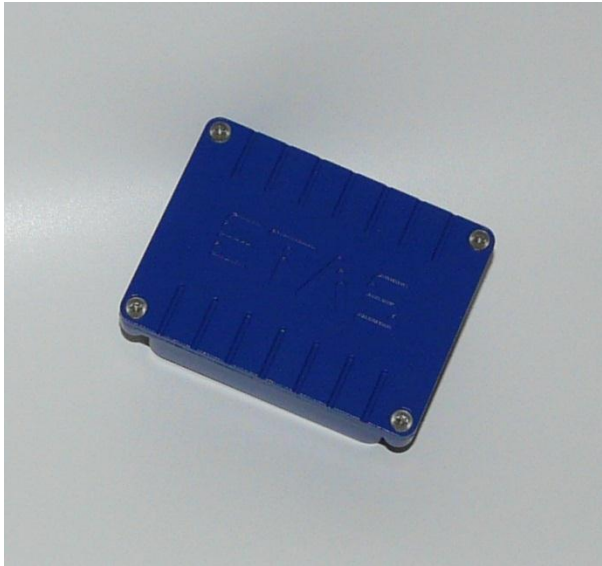


Figure 1: Top View (Image similar)

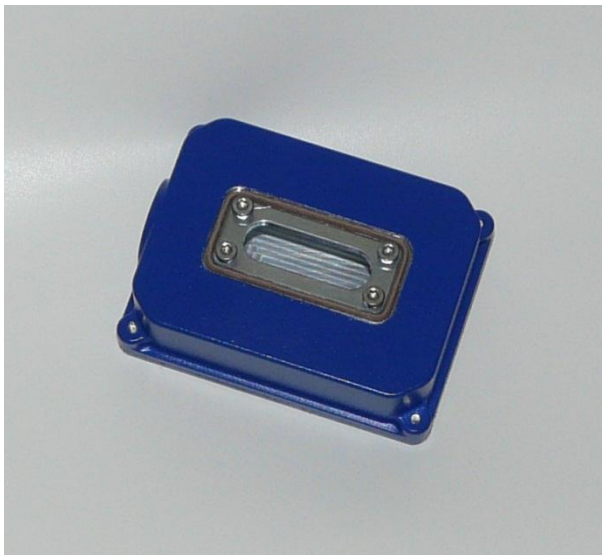


Figure 2: Bottom View (Image similar)

## 2 Technical Data

---

### 2.1 Mounting ETK into the housing

---

The Illustrations shows an ETK-S20.0 and Adapters. Mounting of another ETK is similar.

Necessary tools:

Open End Wrench 17



Torx T8



Torx T10



Screw	Tool	Recommend Assembly Torque [Nm]
Screw M2.5	Torx T8	0,90
Screw M3	Torx T10	1,35
PG9 Cable Gland	Open End Wrench 17	12

Table 1: Tooling Equipment

### 2.1.1 Connect ECU Adapters

---

Plug the ECU Adapters ETAL1 and ETAL3 into the ETK

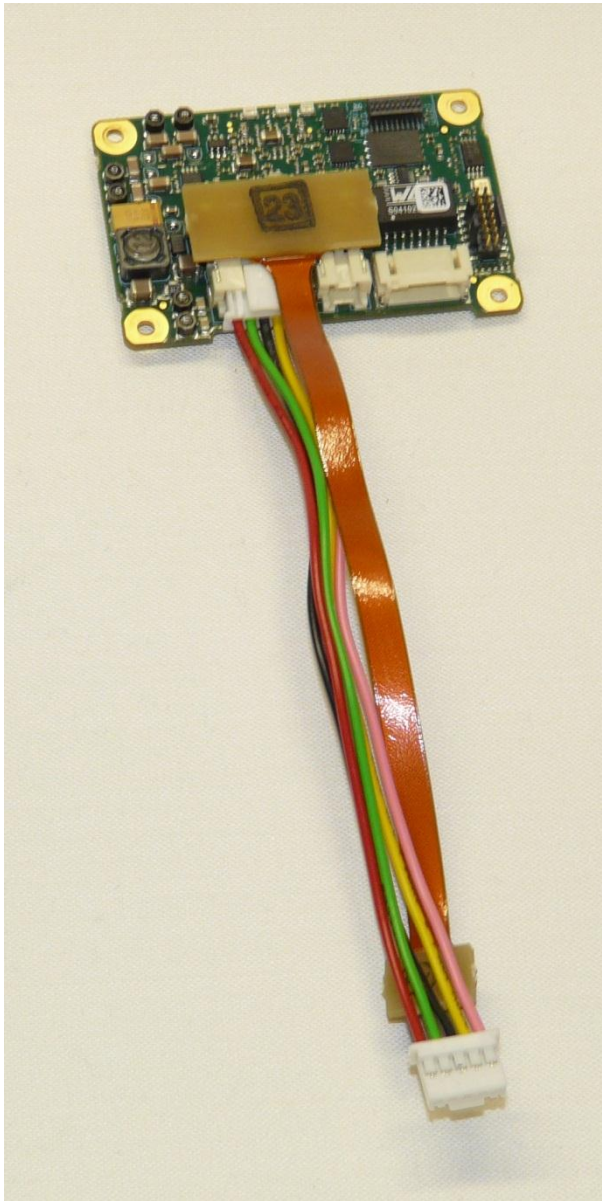


Figure 3: ETK-S20.0 + ETAL1 + ETAL3

### 2.1.2 Screwing the Ethernet Adapter into the Housing

Screw the Ethernet Adapter CBAM260.0 (ECUs without Permanent Power Supply inside) or CBAM261.0 (ECUs with Permanent Power Supply inside) into the housing.

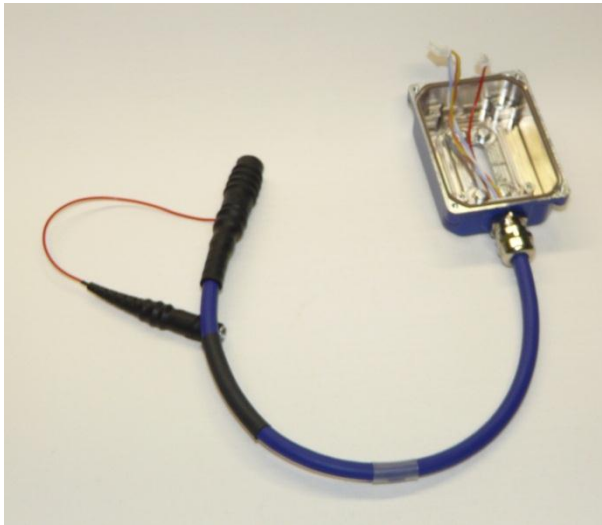


Figure 4: ETKS\_C3 + CBAM260.0-0m50

### 2.1.3 Plug in Ethernet Adapter

Plug in the connectors from the Ethernet Adapter

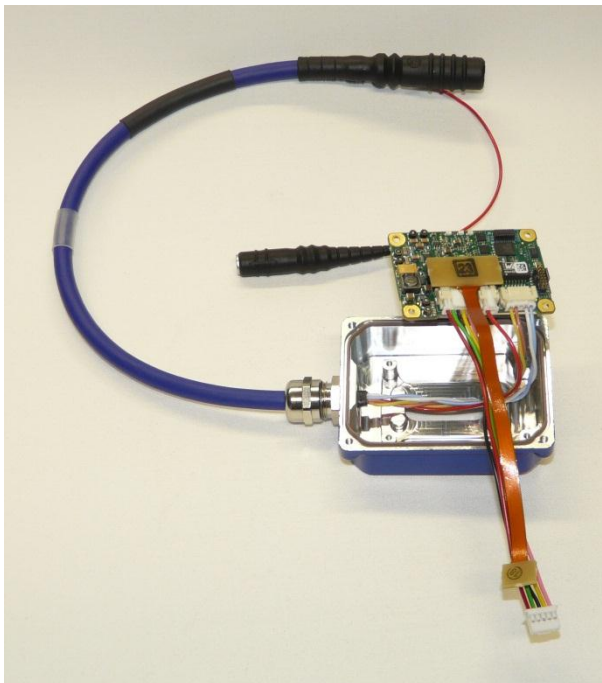


Figure 5: ETKS\_C3 + ETK-S20.0 + Adapters



### 2.1.4 Screwing ETK into ETKS\_C3

Pass the ECU adapters through the hole to the ECU.

Arrange the cables from the Ethernet Adapter under the ETK.

Screw the ETK into the Adapter with the attached M2,5 \* 6mm screws.

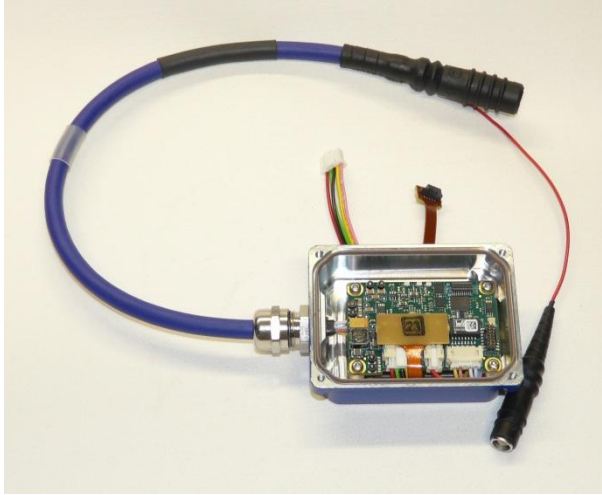


Figure 6: Screwed ETK into ETKS\_C3



#### **WARNING!**

*Do not use Lock Washers between screw and PCB. This can damage the PCB.*

### 2.1.5 Close Cover

Close the cover with the four M3 \* 10 screws.

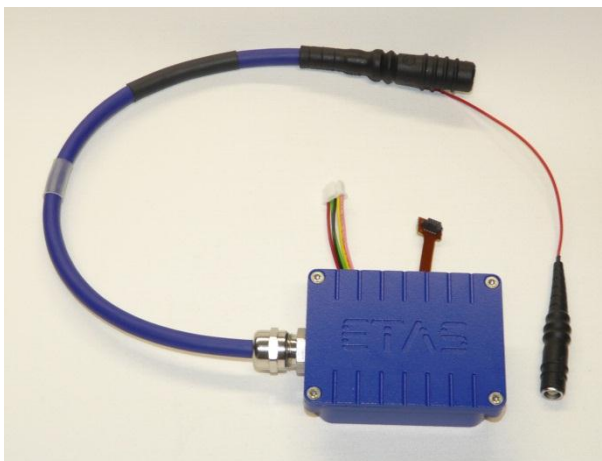


Figure 7: Closed ETKS\_C3

### 2.1.6 Mount ETKS\_C3 at the ECU

---

Mount the ETKS\_C3 to the ECU.

Use the four screws M3 \* 5 (if the thickness of the ECU housing is between 0.5 and 1.5mm) to fix the ETKS\_C3 at the ECU housing.

**Note**

*Be aware, that the thread depth for the four screws is between 3 and 4.5 mm. If this is not the case, please use screws with appropriate length.*

**Note**

*Keep a good electrical connection between the ETKS\_C3 seal and the ECU housing.*

2.2 Measurement Drawings

All measurements in mm.

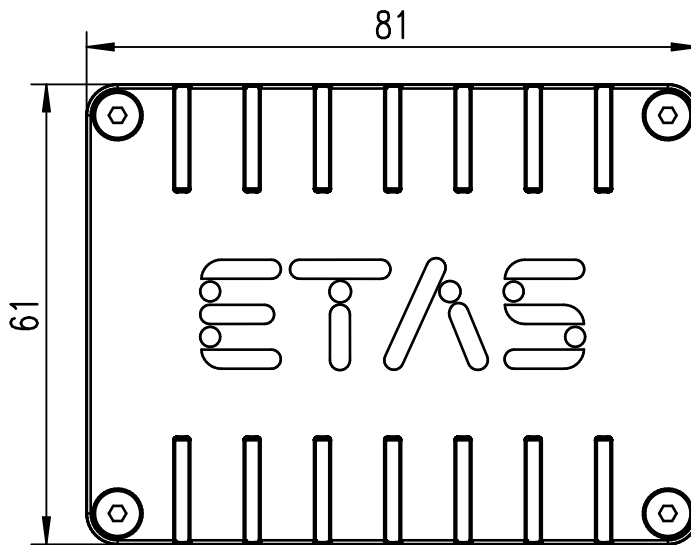


Figure 8: View from Top

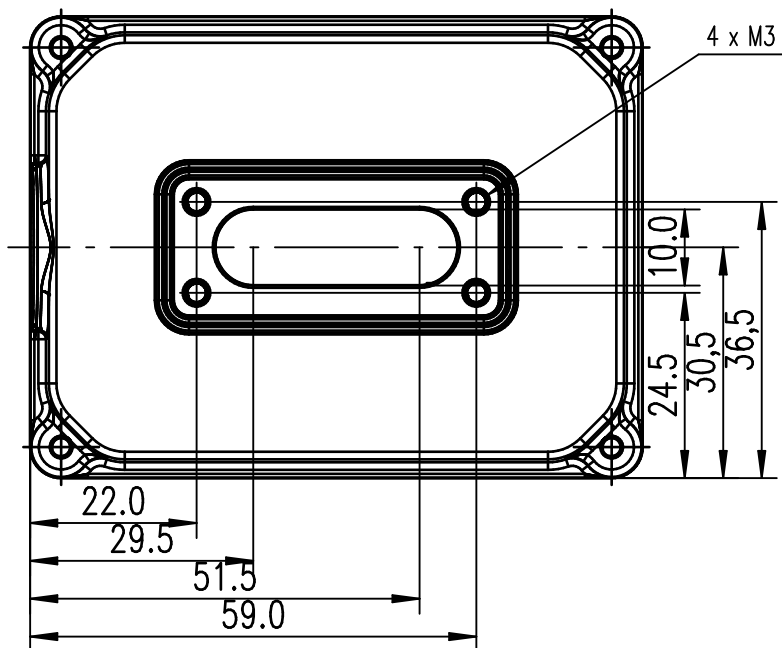


Figure 9: View from Bottom

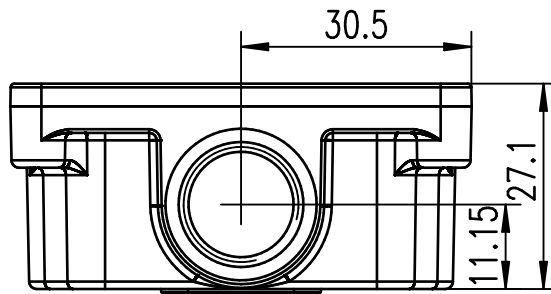


Figure 10: View from Side

### 2.3 Environment Data

Condition	Temperature
Operating Temperature	-40°C - +125°C

Table 2: Temperature Environment

Condition	Protection Class
Tightness	IP65

Table 3: Ingress Protection Rating

Condition	Shielding Effectiveness
10kHz – 10Mhz	>20 dB
10MHz – 20MHz	>30 dB
20MHz – 30MHz	>50 dB
30MHz – 600MHz	>40 dB
600MHz – 1GHz	>30 dB
1GHz – 2GHz	>15 dB
2GHz – 3,2GHz	>10 dB

Table 4: Shielding Effectiveness

**3 Ordering Information**

---

<b>Short Name</b>	<b>Order - Number</b>
ETKS_C3	F 00K 107 683
CBAM260.0-0m5	F 00K 107 753
CBAM261.0-0m5	F 00K 107 754

Table 5: Ordering Information

## 4 ROHS Conformity

---

### 4.1 European Union

---

The EU Directive 2002/95/EU limits the use of certain dangerous materials for electrical and electronic devices (RoHS conformity).

ETAS confirms that the product corresponds to this directive which is applicable in the European Union.

### 4.2 China

---

ETAS confirms that the product meets the product-specific applicable guidelines of the China RoHS (Management Methods for Controlling Pollution Caused by Electronic Information Products Regulation) applicable in China with the China RoHS marking affixed to the product or its packaging.

### 4.3 Taking the Product Back and Recycling

---

The Material of the housing ETKS\_C3 is Aluminum A380.

The European Union has passed a directive called Waste Electrical and Electronic Equipment, or WEEE for short, to ensure that systems are setup throughout the EU for the collection, treating and recycling of electronic waste.

This ensures that the devices are recycled in a resource-saving way representing no danger to health or the environment.

The user is obliged to collect the old devices separately and return them to the WEEE take-back system for recycling.

The WEEE directive concerns all ETAS devices but not external cables or batteries. For more information on the ETAS GmbH, contact the ETAS sales and service locations.

## 5 ETAS Contact Addresses

---

### *ETAS HQ*

---

ETAS GmbH

Borsigstraße 14

70469 Stuttgart

Germany

Phone: +49 711 89661-0

Fax: +49 711 89661-106

WWW: [www.etas.com](http://www.etas.com)

### *ETAS Subsidiaries and Technical Support*

---

For details of your local sales office as well as your local technical support team and product hotlines, take a look at the ETAS website:

ETAS subsidiaries WWW: [www.etas.com/en/contact.php](http://www.etas.com/en/contact.php)

ETAS technical support WWW: [www.etas.com/en/hotlines.php](http://www.etas.com/en/hotlines.php)