

ES910: How to remove model



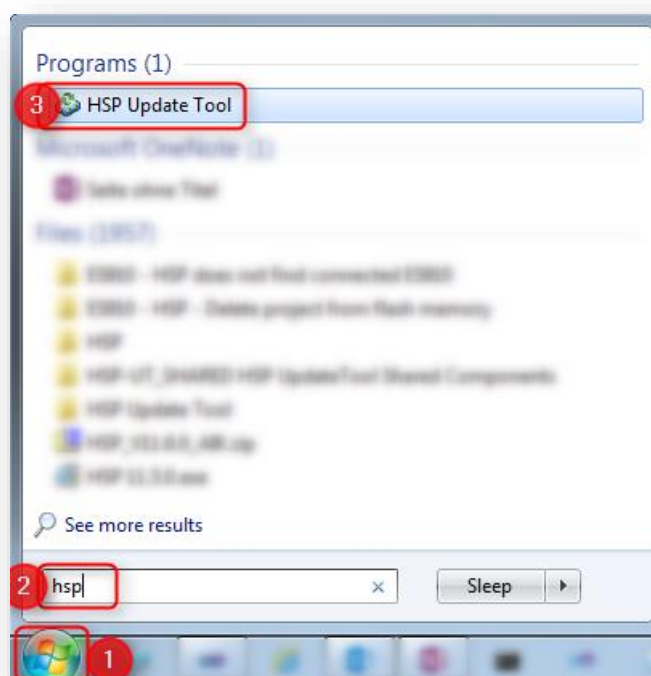
Question

- How to delete a model from ES910?
- I have connected an ES910 to my PC
 - Now I want to delete the existing model from the flash memory of the ES910

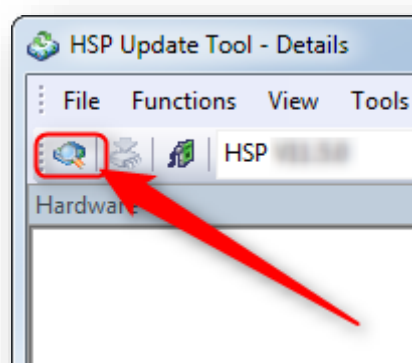


Answer

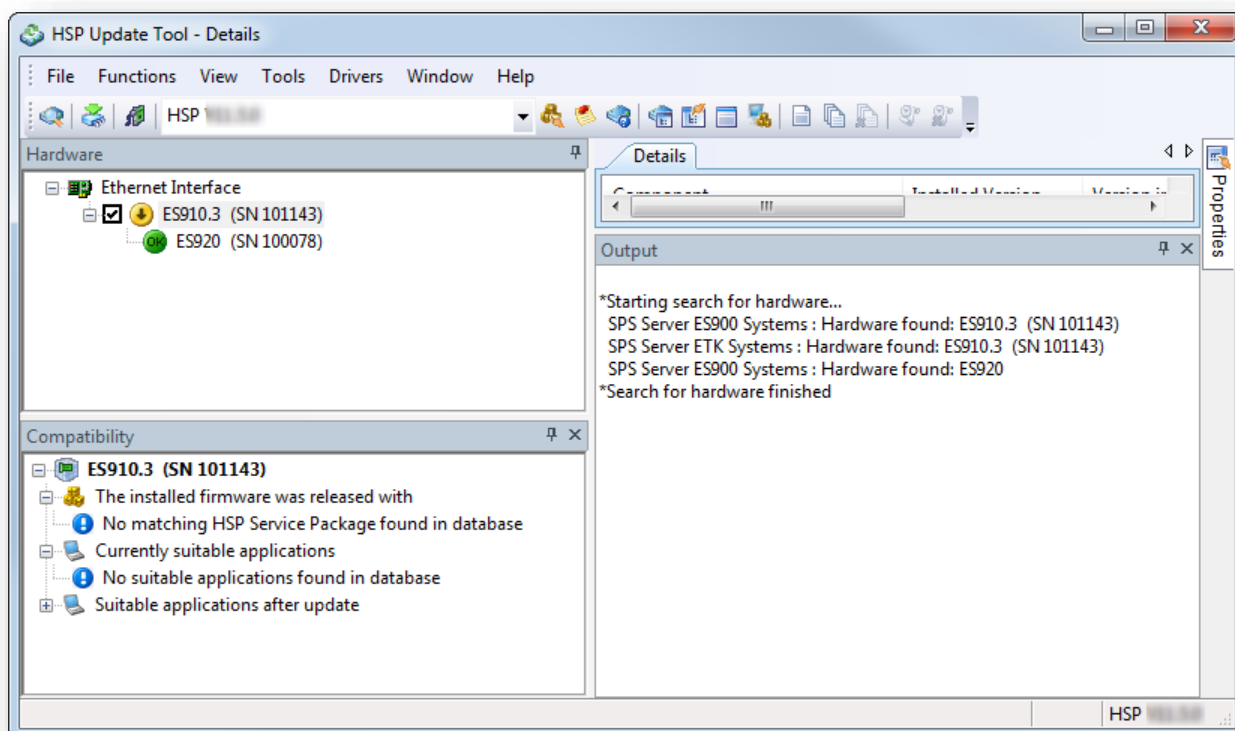
1. Start **HSP Update Tool**



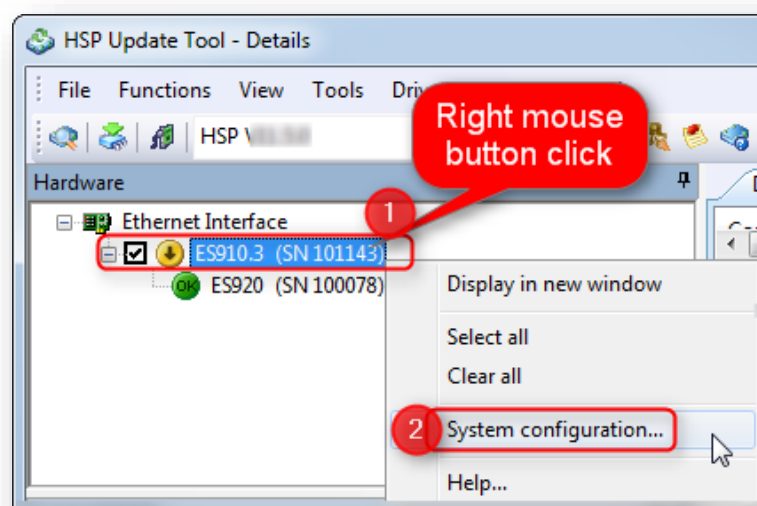
2. In **HSP Update Tool** → Tool bar → Click **Search for Hardware** button



- Result:

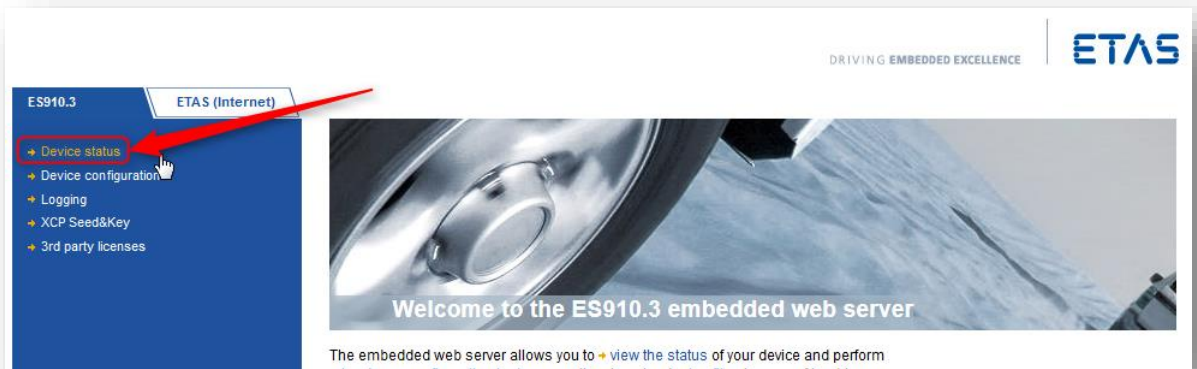


3. On hardware device: **Right** mouse button click → **System configuration...**

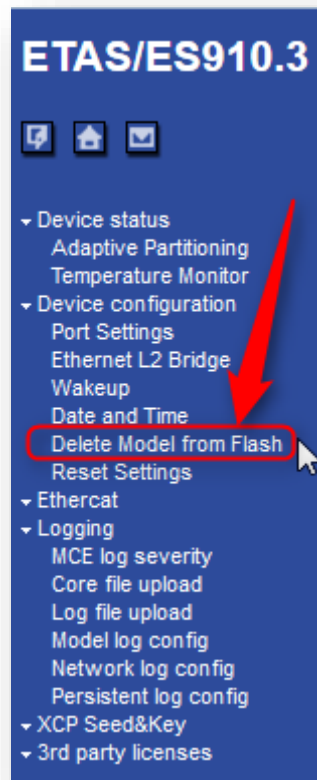


- Result: Configuration user interface of the hardware device is opened in **web browser**

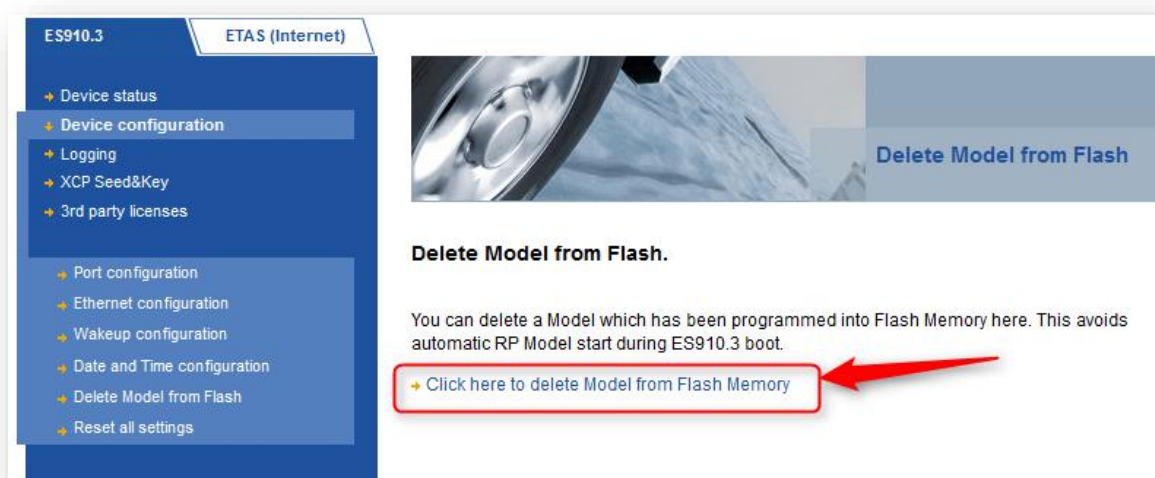
4. In web browser → **Device status**



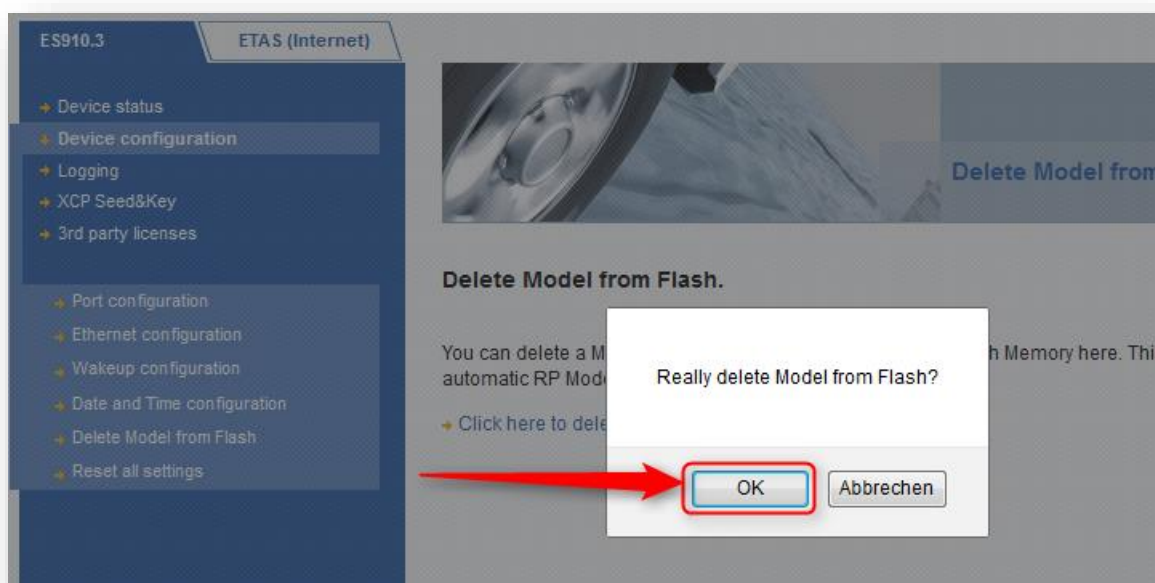
5. Click **Delete Model from Flash**



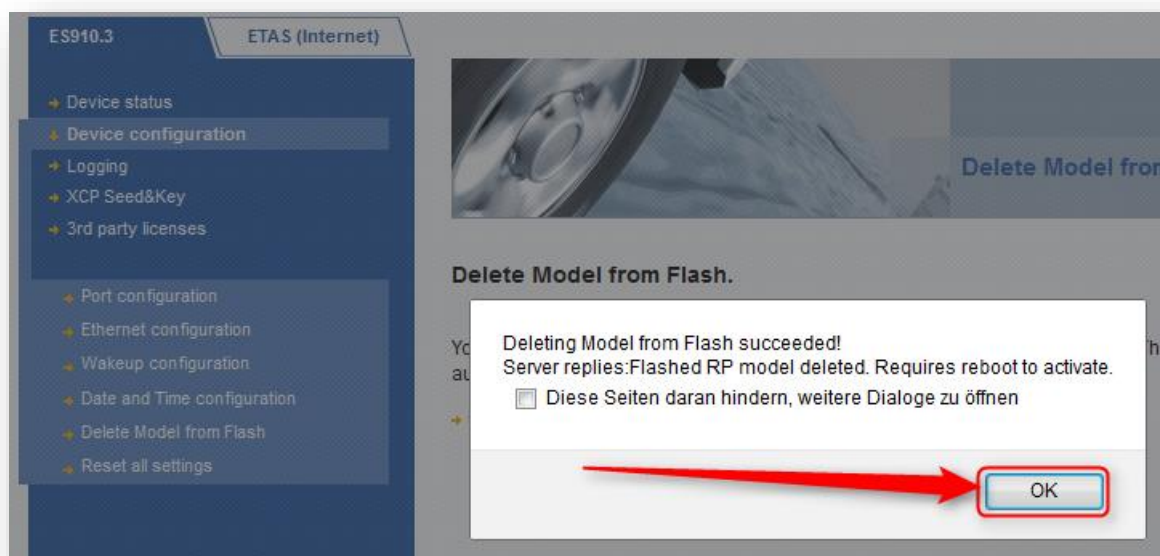
6. Click **Click here to delete Model from Flash Memory**



7. Click **OK** button



8. Result: Successfully deleted the model → Click **OK** button



Do you still have questions?

- You will find **further FAQ articles** on the ETAS homepage: www.etas.com/en/faq
- **Movies** corresponding to FAQ articles can be found on the [ETAS YouTube channel](#)
- Please feel free to contact our Support Center, if you have further questions.
- Here you can find all information: <http://www.etas.com/en/hotlines.php>

This information (here referred to as „FAQ“) is provided without any (express or implied) warranty, guarantee or commitment regarding completeness or accuracy. Except in cases of willful damage, ETAS shall not be liable for losses and damages which may occur or result from the use of this information (including indirect, special or consequential damages).