

Safe and user-friendly measurement visualization

INCA-Touch V2.0

Do you know this challenge?

You are a calibration engineer and you have to measure or calibrate ECU functions while driving but you're not allowed to drive and manage your keypad simultaneously, forcing you to take time-consuming roadside stops. Due to security risks, more and more companies are prohibiting calibration work on a PC while driving, but today's calibration engineers need to see more details of the vehicle status for efficient validation.

Our Solution – INCA-Touch V2.0

INCA-Touch is an intuitive and touch-sensitive user interface which offers access to INCA's main functionality, enabling it to perform essential measuring and calibration activities. It was developed based on feedback from experienced calibration engineers. All of the selected variables of a given INCA experiment can be assigned to graphical widgets. The use of INCA-Touch enables the driver to calibrate and display measurement data as well as start and/or stop measurement data recording.

The new INCA-Touch V2.0 is nicely integrated into INCA experiment. It consists of two windows: one instrument window for the configuration that is saved with the INCA experiment and one floating window for touch operations that can be moved to a second touch display.

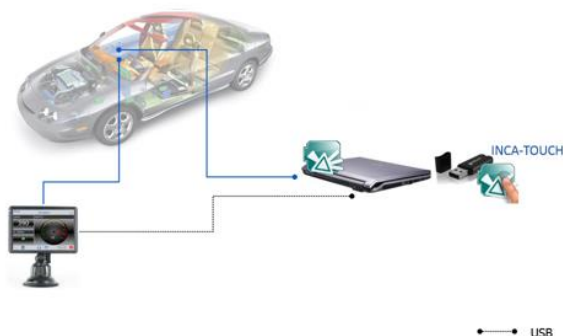
Technical Details

- Optimized design for any touch display
- Execution on any Windows® 7, 8, 10 PC
- Safe and easy integration into the vehicle
- Standard INCA licensing, no additional USB-Dongle required
- Solution is independent from special display hardware, just extend your Windows desktop to any external touchscreen (via USB, VGA, HDMI or DVI).



Typical use case

Car + Notebook with INCA-Touch V2.0 Add-on + Touchscreen-Monitor



Safe and user-friendly measurement visualization

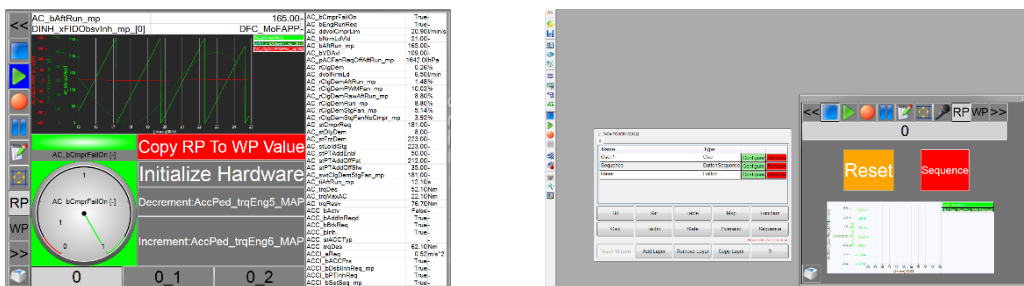
INCA-Touch V2.0

What can you do with INCA-Touch V2.0?

You can perform preconfigured standard actions such as initialize hardware, switch working/reference page, start/stop/pause recording, check the recording status, set marker with voice comments etc.

Additionally you are now able to create user defined actions such as increment/ decrement (Label, curve or map), add offset, divide/multiply with, or set value with INCA Touch V2.0.

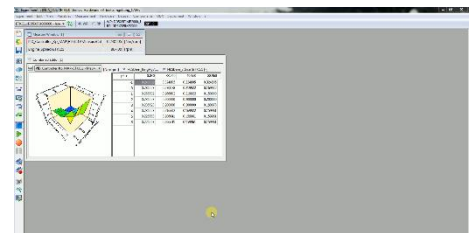
To proceed with the created function you just need to push the defined button on the display or trigger the execution by voice command.



How does it work?

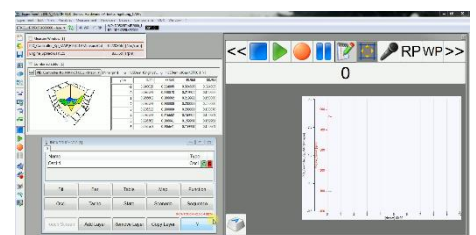
Example 1: Create an oscilloscope on your INCA-Touch-Display

In the first video you will see how easy it is to move variables from your INCA-PC to the INCA-Touch-Monitor and how you create an oscilloscope on the INCA-Touch-display.



Example 2: Create a sequence with INCA Touch V2.0

In the second video the p-factor of the engine speed-PID-Controller is increased by a user-defined sequence button until the revs begin to oscillate. After that the data will be reset by switching from WP to RP.



Tools used

- INCA V7.1.10/3
- INCA-Touch: V2.0.0.4 Beta INCA V7.1.touch

Downloads

- [Example-1_Create-Osci-in-INCA-Touch.mp4](#)
- [Example-2_Create-Sequence-with-INCA-Touch-V2.0.mp4](#)

Your ETAS Contact

Dariusz Humienik; +49 711 3423 - 2416
dariusz.humienik@etas.com