



Question:

How to automatically start a recording upon opening the experiment environment.

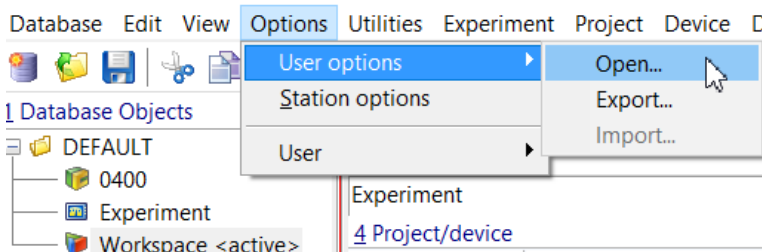
The use case is that when the experiment environment is opened, the recording is automatically activated.



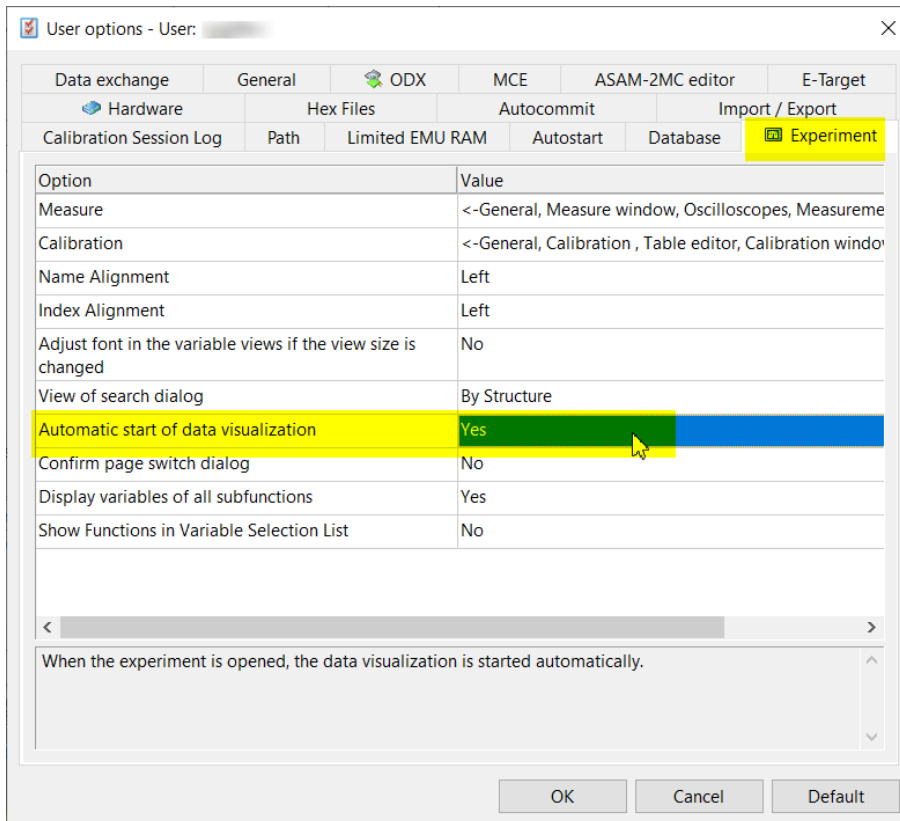
Answer:

Please follow these steps:

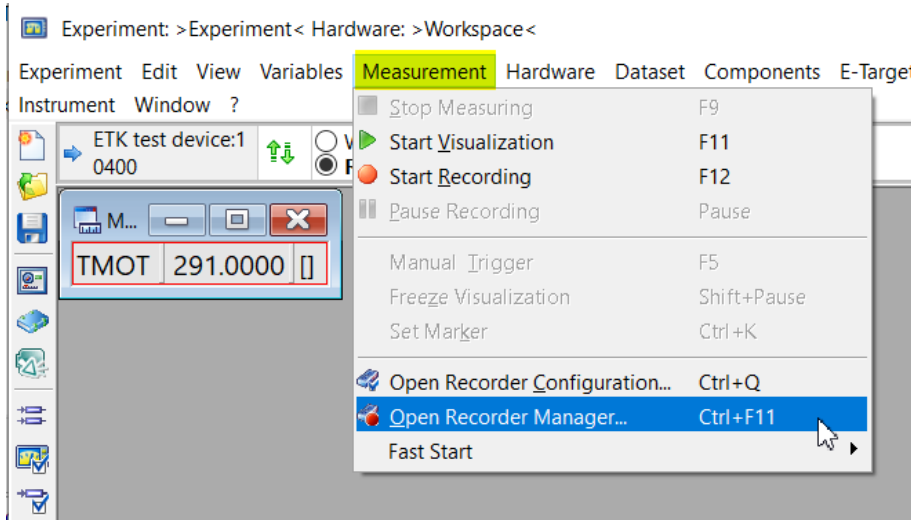
- In the INCA Database Manager, open the user options as follows:



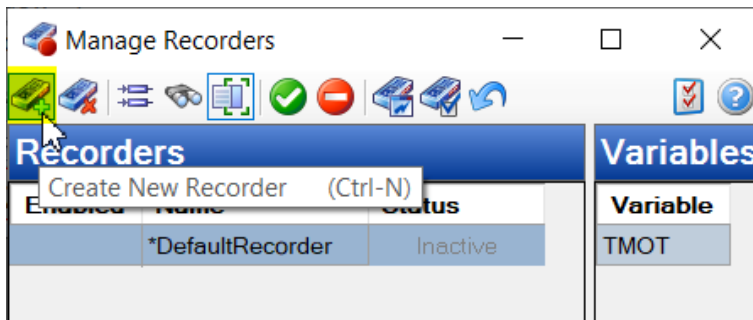
- Select the register card **Experiment** and set the option **Automatic start of data visualization** to **Yes**



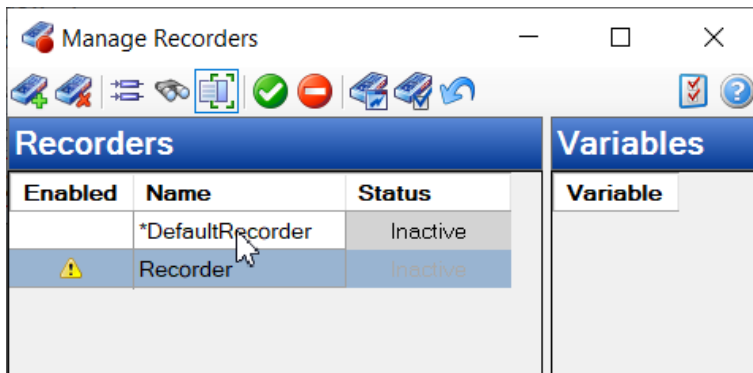
- Open the Experiment and under the menu **Measurement** select **Open Recorder Manager...**



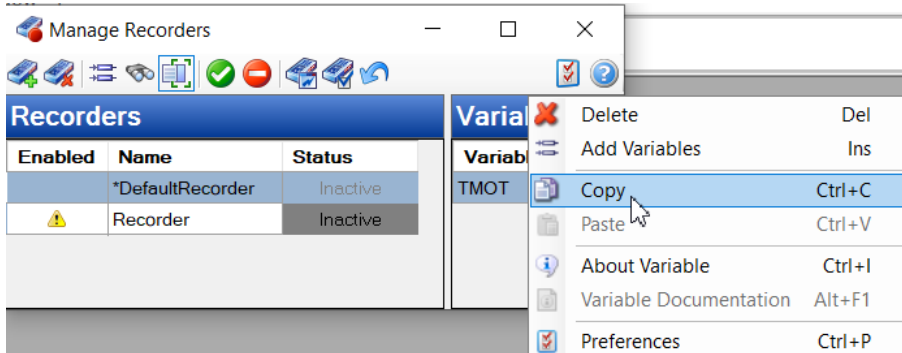
- Create a background recorder as follows



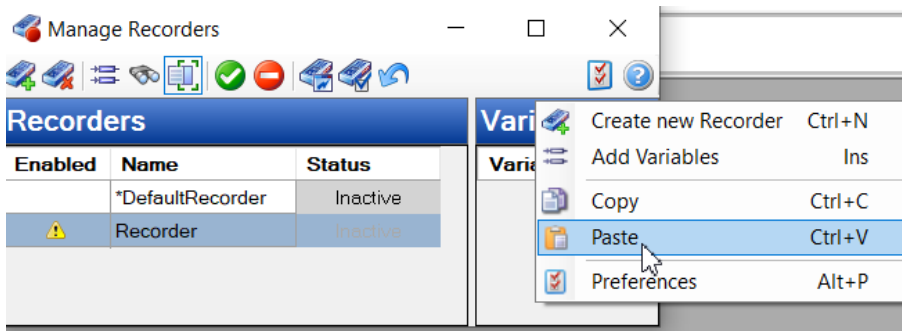
- Initially the new background recorder **Recorder** does not contain any values



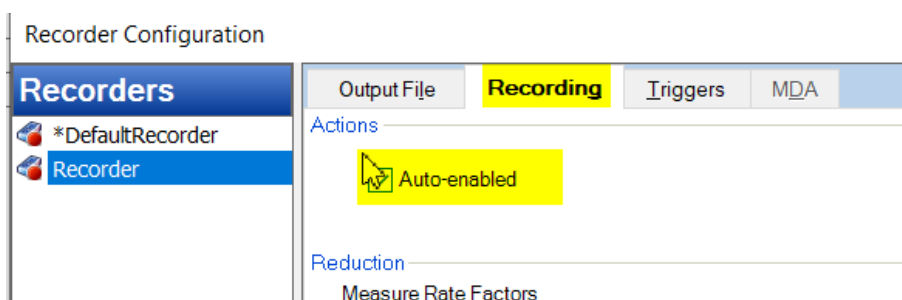
- Click on the **Default Recorder** and copy all variables into the clipboard



- Click on the new background recorder **Recorder** and paste all variables from the clipboard



- Now double click on the background recorder **Recorder** to open up the window called **Recorder Configuration**
- Open the register card called **Recording** and activate **Auto-enabled**

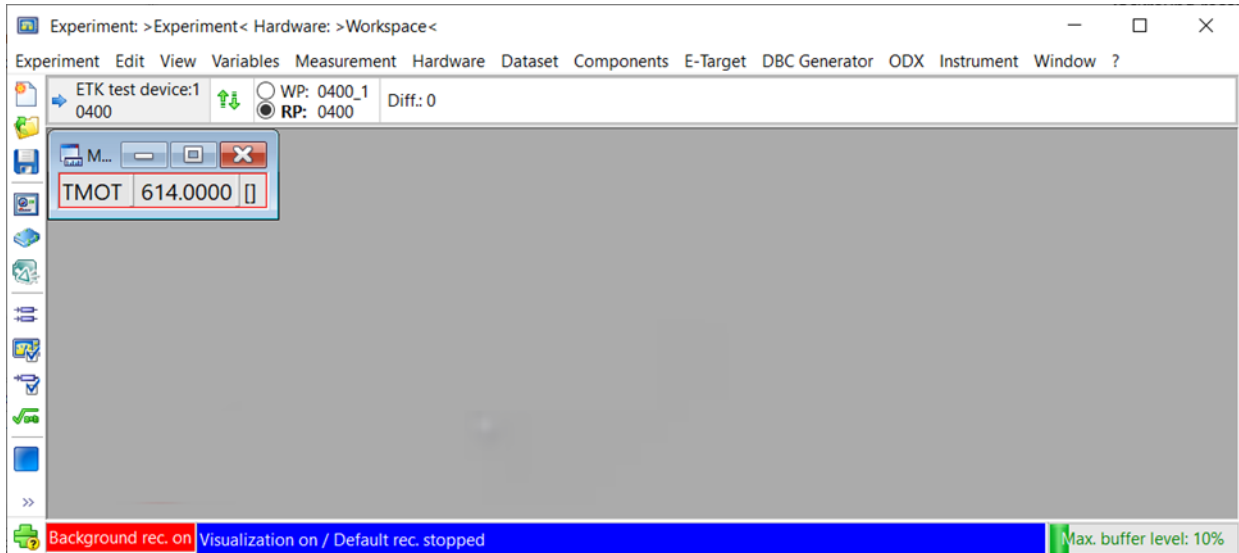


Additional option: If required you can set up triggers as desired in the register card called **Triggers**

- Close the **Recorder Configuration** and **Manage Recorder** windows and save the experiment
- Close the experiment

Restart the experiment and you will see the recording runs automatically.

- At the bottom of the experiment environment you will see the background recorder is running



In case of further questions:

Please feel free to contact our Support Center, if you have further questions.

Here you can find all information: <http://www.etas.com/en/hotlines.php?langS=true&>

This information (here referred to as „FAQ“) is provided without any (express or implied) warranty, guarantee or commitment regarding completeness or accuracy. Except in cases of willful damage, ETAS shall not be liable for losses and damages which may occur or result from the use of this information (including indirect, special or consequential damages).