



## Question:

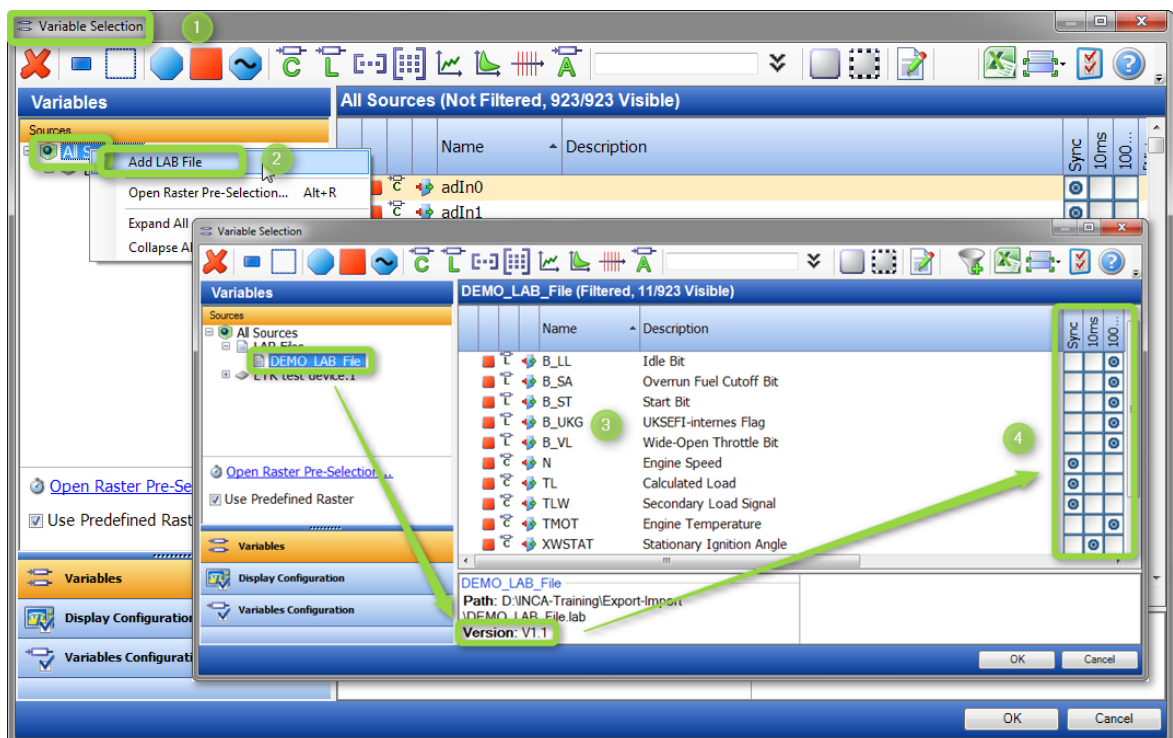
How can LAB files (variable files) be included in the INCA Experiment?



## Answer:

In the Variable Selection Dialog of an INCA Experiment the context menu item "Add LAB File" allows to add lab files

1. Open the Variable Selection Dialog.
2. Right mouse click on "All Sources" or one of the devices displays the context menu. Make sure that in the dialog window the filter for file extensions is ".lab". Alternatively you can set the filter on "All Files". Click on "Add LAB File", select an existing file and close the window.
3. Once the lab file has been added it is listed in the Variable Selection window on the left side and the contents of the file is displayed on the right side.
4. Lab files (v1.0) display variables' names only, whereas Lab files (v1.1) comprise names as well as raster information.





## Additional information:

---

Lab files can be used in the Calibration Data Manager (CDM) as well.

The procedure of inclusion of LAB files looks similar to the procedure described above.

For more information see also in INCA-Online Help (F1).

The functionality to write Labfile including raster information (v1.1 Lab) is supported by INCA V7.2.4.



## In case of further questions:

---

You will find further FAQ here: [www.etas.com/en/faq](http://www.etas.com/en/faq)

Please feel free to contact our Support Center, if you have further questions.

Here you can find all information: <http://www.etas.com/en/hotlines.php>

This information (here referred to as „FAQ“) is provided without any (express or implied) warranty, guarantee or commitment regarding completeness or accuracy. Except in cases of willful damage, ETAS shall not be liable for losses and damages which may occur or result from the use of this information (including indirect, special or consequential damages).