

How to start the Daisy Chain Configuration Tool



Question

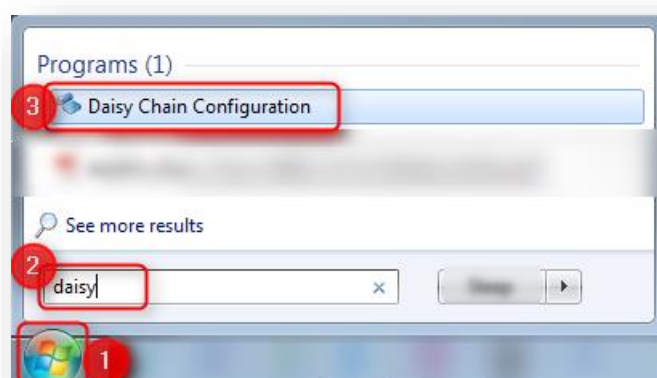
- How to start the daisy chain configurator tool?
- Why should I install the standalone version of the Daisy-Chain Configuration Tool?
- Where can I get the Daisy Chain Configuration Tool standalone version?



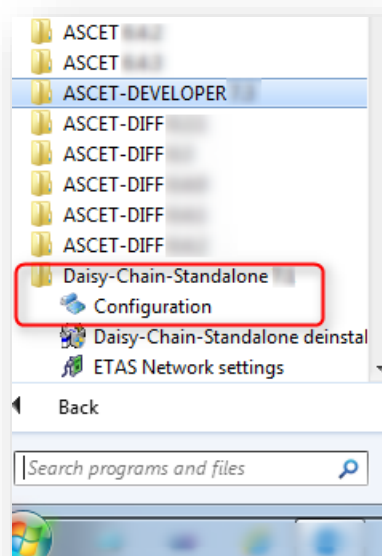
Answer

How to start the Daisy Chain Configuration Tool:

- **Windows Start** → In **search** text field: Type **daisy** → Under **Programs** → **Daisy Chain Configuration**

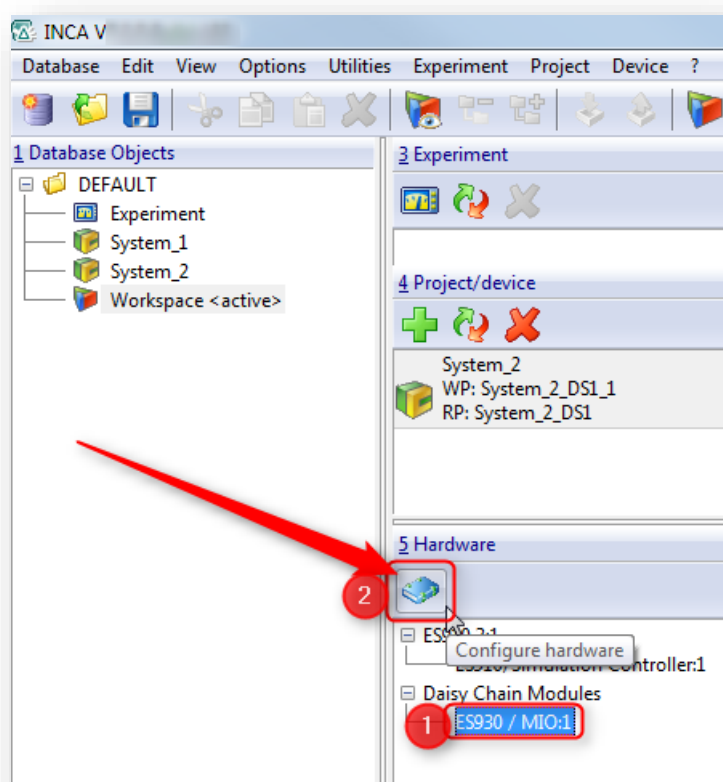


- The **Daisy Chain Configuration Tool** usually resides in the **ETAS** folder under folder **Daisy-Chain-Standalone**

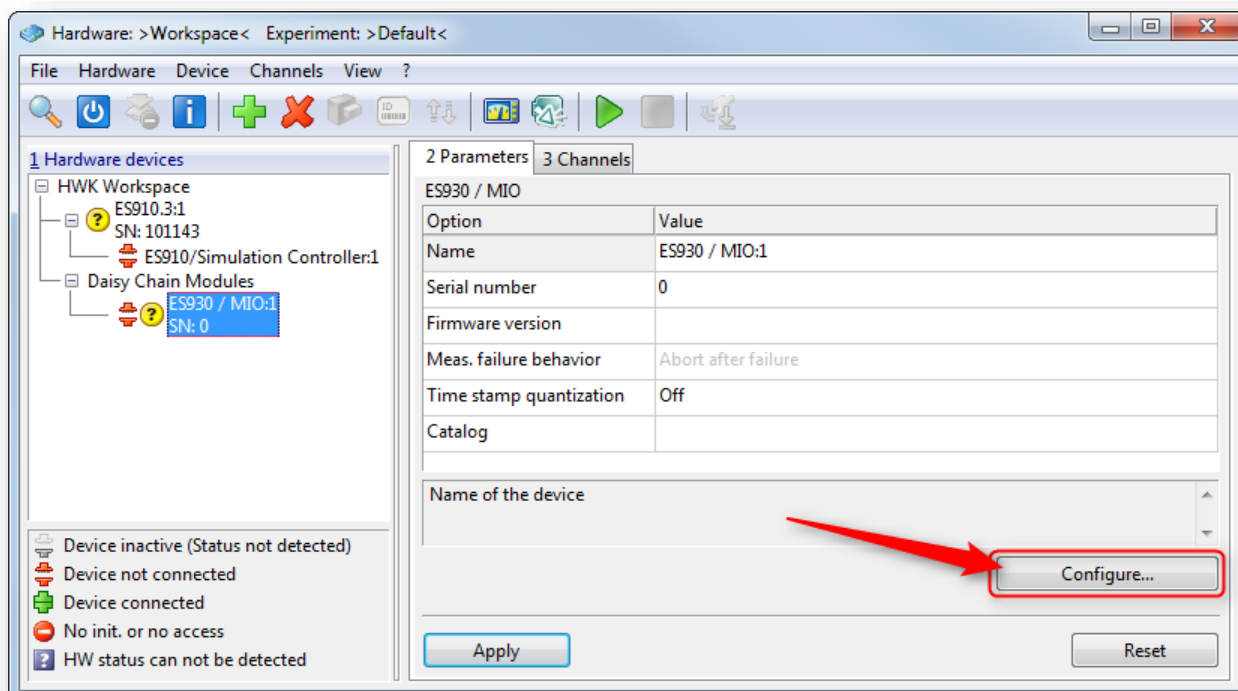


Why should I install the standalone version of the Daisy-Chain Configurator Tool?

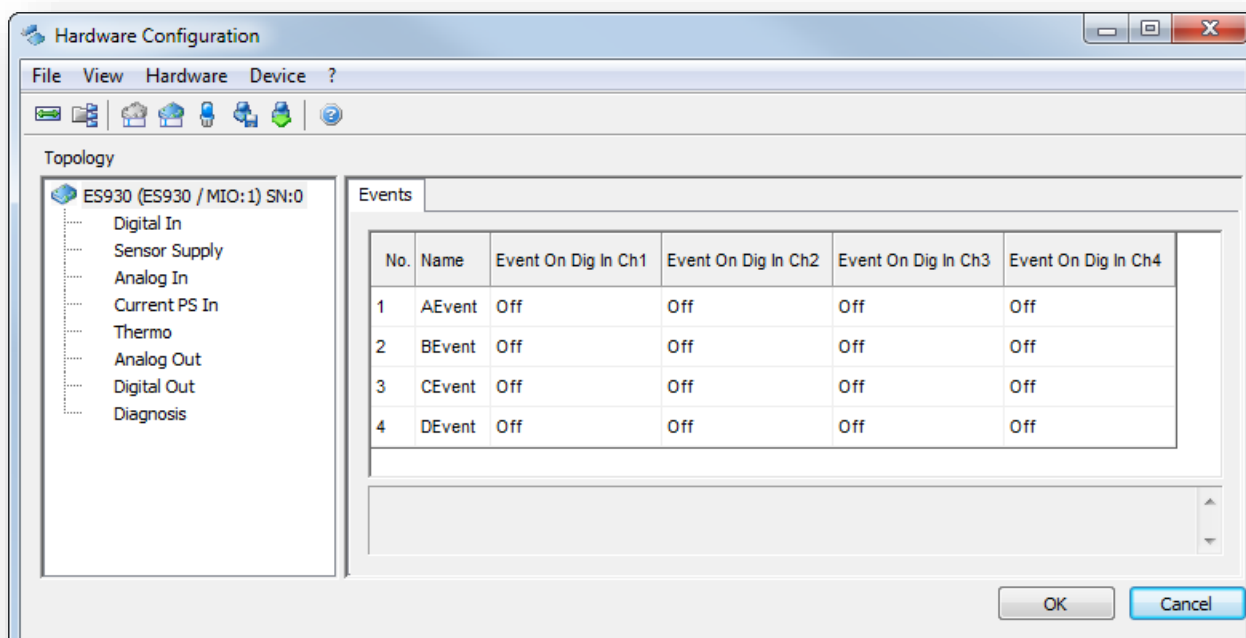
- You can configure all released Daisy Chain device types with Daisy Chain Configuration Tool
- For rapid prototyping you need to configure hardware and software of your daisy chain
- This configuration is done in the Daisy Chain Configuration Tool
- **Remark:**
 - There is a **limited** version of the Daisy Chain Configuration Tool in **INCA**:
 - For example: If you start the Daisy Chain Configuration Tool from within INCA then it is not possible to read XML files
 - In **INCA** → **Hardware** → Select a **daisy chain module** → Click **Configure hardware** button



- In dialog **Hardware** → **Hardware devices**: Select daisy chain module → Tab **Parameters** → Click **Configure...** button



- Dialog **Hardware Configuration** is opened



- This is the Daisy Chain Configuration Tool but with limited set of functionalities
- For example: You cannot import XML files

Where can I get the Daisy Chain Configuration Tool standalone version?

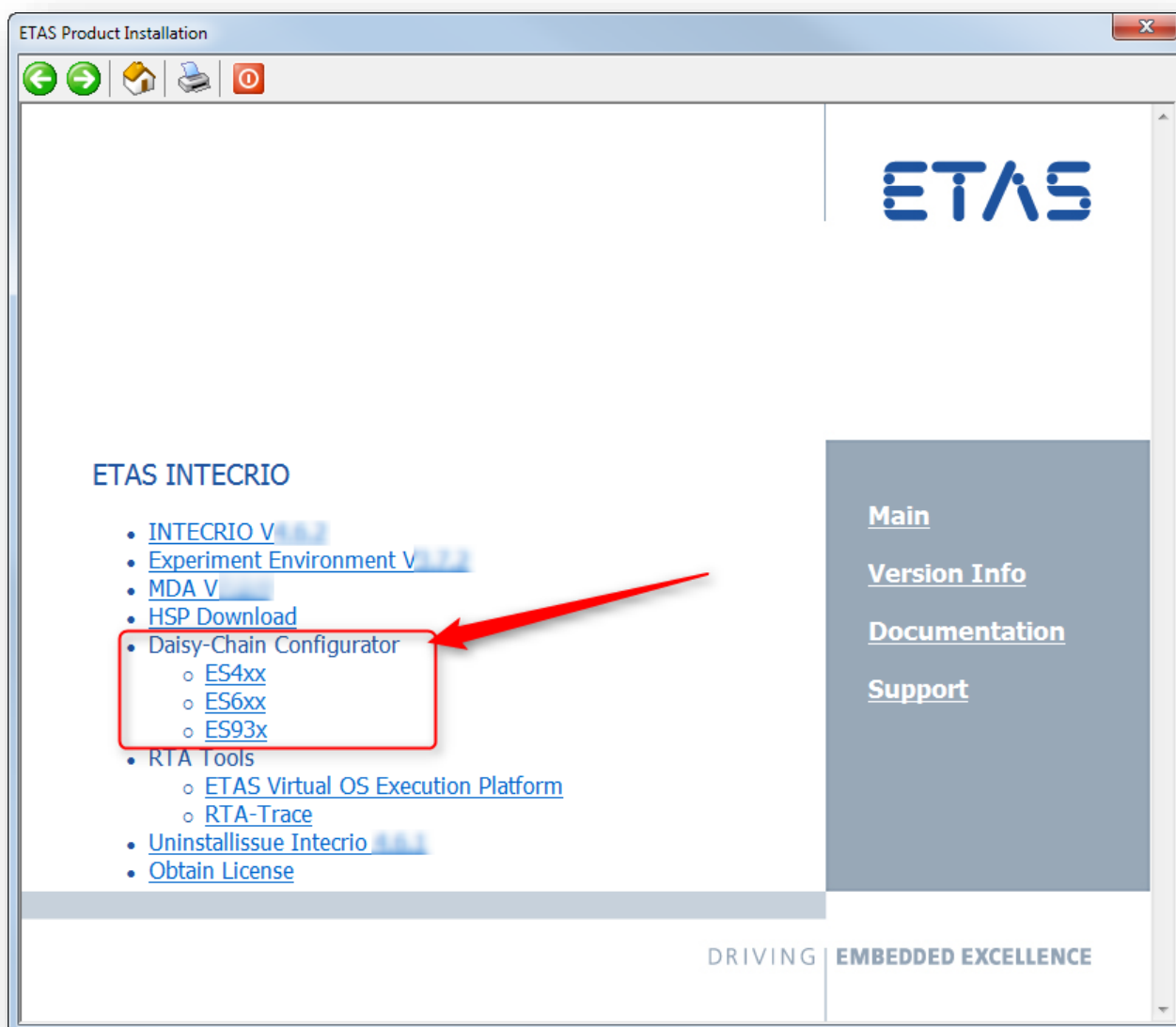
- Find the current version on the ETAS homepage:
 - In any web browser: navigate to <https://www.etas.com> → **ETAS Products** → **Download Center** → **Product Family / Category** = ES900 → **Type** = Update / Software → **Daisy Chain Configuration Tool**

The screenshot shows the ETAS Download Center website. The browser address bar shows the URL https://www.etas.com/en/products/download_center.php?langS=true&. The navigation menu on the left includes 'ETAS Products', 'Download Center', and 'Featured Publications'. The main content area displays a table of products with columns for 'Product Family / Category', 'Product / Topic', and 'Type'. The 'ES900' category is selected, and the 'Update / Software' type is chosen. A yellow callout box highlights the 'Daisy Chain Configuration Tool' entry, which is also highlighted by a red box and a mouse cursor.

Product Family / Category	Product / Topic	Type
ES900	All	Update / Software
ES900, ...	ES511, ES512, ES520, ES523, ES580, ...	Update / Software
ES900, ...	ES410, ES411, ES413, ES415, ES420, ...	Update / Software
ES900, ...	ES410, ES411, ES420, ES430 / ES432, ES511, ...	Update / Software

Daisy Chain Configuration Tool
 This software is used for measurement parameter configuration in ETAS devices. It is available as add-on for INCA measurement and calibration software or as software for standalone usage.

- There is an installer of the Daisy Chain Configuration Tool on the DVD for ETAS INTECRIO



- For each product family (currently: ES4xx, ES6xx and ES93x), exists an own Standalone installation.
- If you want to use ES4xx devices then install ES4xx Standalone tool.
- If you want to use ES63x devices then install ES63x Standalone tool.
- It is possible to install both.
- Then you have one program that supports all device types which are installed before.



Additional information

- Former versions of the **Daisy Chain Configuration Tool** were named **Hardware Configuration Tool**



Do you still have questions?

- You will find **further FAQ articles** on the ETAS homepage: www.etas.com/en/faq
- **Movies** corresponding to FAQ articles can be found on the [ETAS YouTube channel](#)
- Please feel free to contact our Support Center, if you have further questions.
- Here you can find all information: <http://www.etas.com/en/hotlines.php>

This information (here referred to as „FAQ“) is provided without any (express or implied) warranty, guarantee or commitment regarding completeness or accuracy. Except in cases of willful damage, ETAS shall not be liable for losses and damages which may occur or result from the use of this information (including indirect, special or consequential damages).