



Question:

INCA / Key Variable List: How to ensure certain variables are selected in my Experiments

I have a list of specific variables, which shall be included in my experiments.
How can I ensure this without a manual variable selection in each experiment?



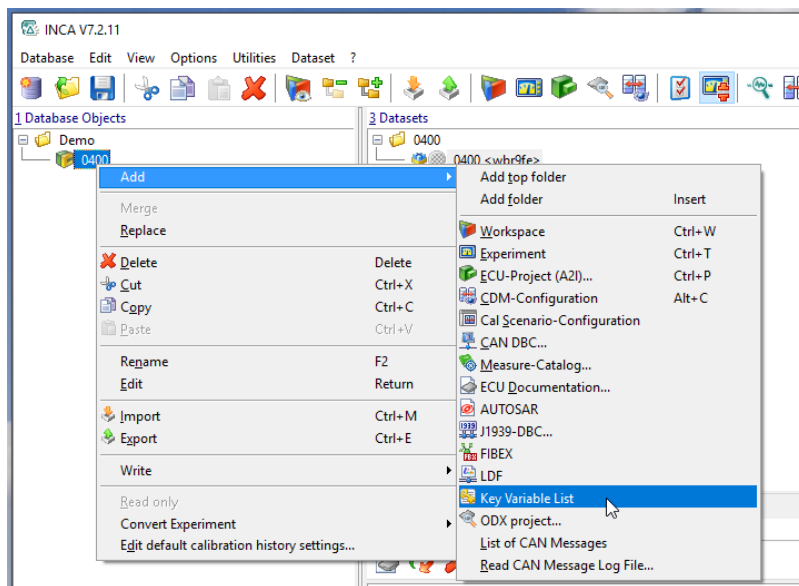
Answer:

A Key Variable List allows automated adding of required variables to an experiment

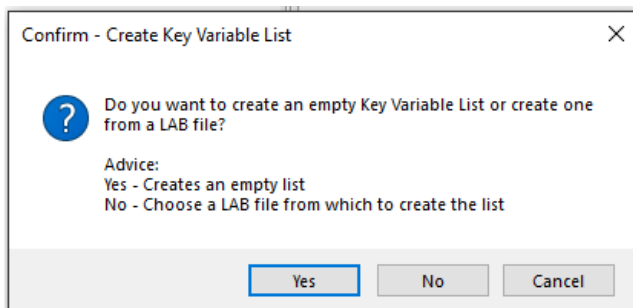
A Key Variable List contains all signals to be recorded. It allows to select/deselect signals by ASAP2 function/group, including the ranking order and raster information. The generation of key variable lists is based on an INCA project (ASAP2 file), it is exportable and editable by the user.

Working with big projects or with lots of different projects it may be difficult to ensure that all needed variables are selected in every experiment.

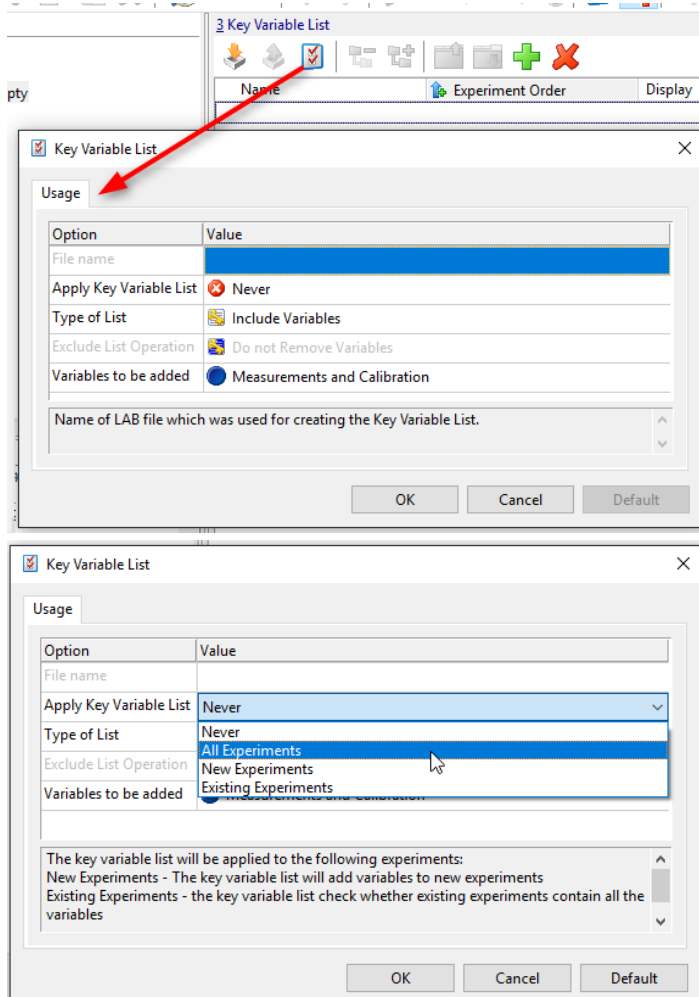
INCA provides a key variable list functionality for this use case. Each INCA project may possess one or more key variable lists.



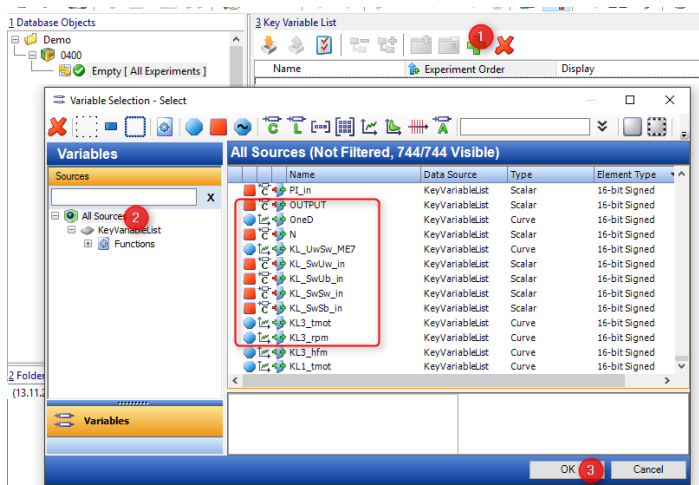
It is possible to add Variables manually or to use the predefined LAB file.



It is possible to apply the Key Variable List to all / new / existing Experiments.



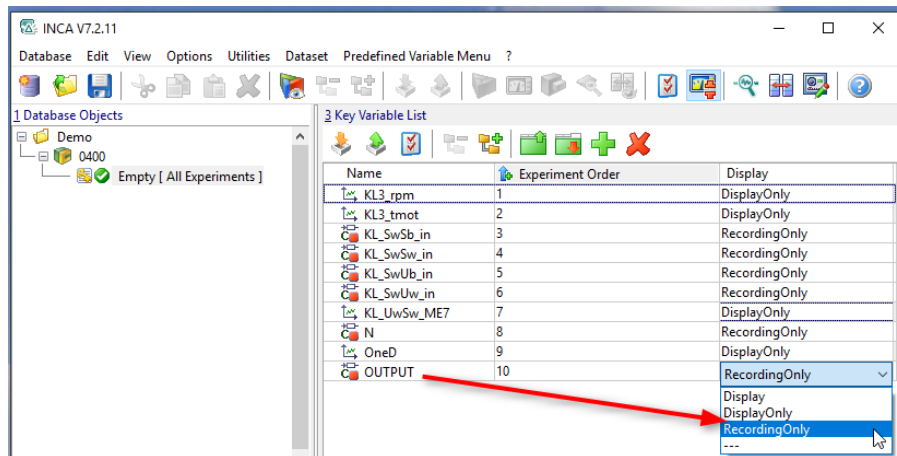
In order to add variables to an empty Key Variables List proceed as shown below:



Measurement Variables are selected in the Default Raster.

The selected signals are prioritized by the given sequence.

If the project is assigned to an experiment, the key signals are automatically added to the defined Display Type.



Additional information:

Please note: The feature "Key Variable List" is supported by INCA V7.2 SP2 and later.

FAQ: How can LAB files (variable files) be included in the INCA Experiment?

FAQ: What is the scope of LAB files in INCA and MDA?

FAQ: How can I create a LAB file (variable file) in INCA?

Do you know the ETAS YouTube channel?



In case of further questions:

You will find further FAQ here: www.etas.com/en/faq

Please feel free to contact our Support Center, if you have further questions.

Here you can find all information: <http://www.etas.com/en/hotlines.php>

This information (here referred to as „FAQ“) is provided without any (express or implied) warranty, guarantee or commitment regarding completeness or accuracy. Except in cases of willful damage, ETAS shall not be liable for losses and damages which may occur or result from the use of this information (including indirect, special or consequential damages).