



Question:

How can I create offline maps for MDA V7.2 and use them?



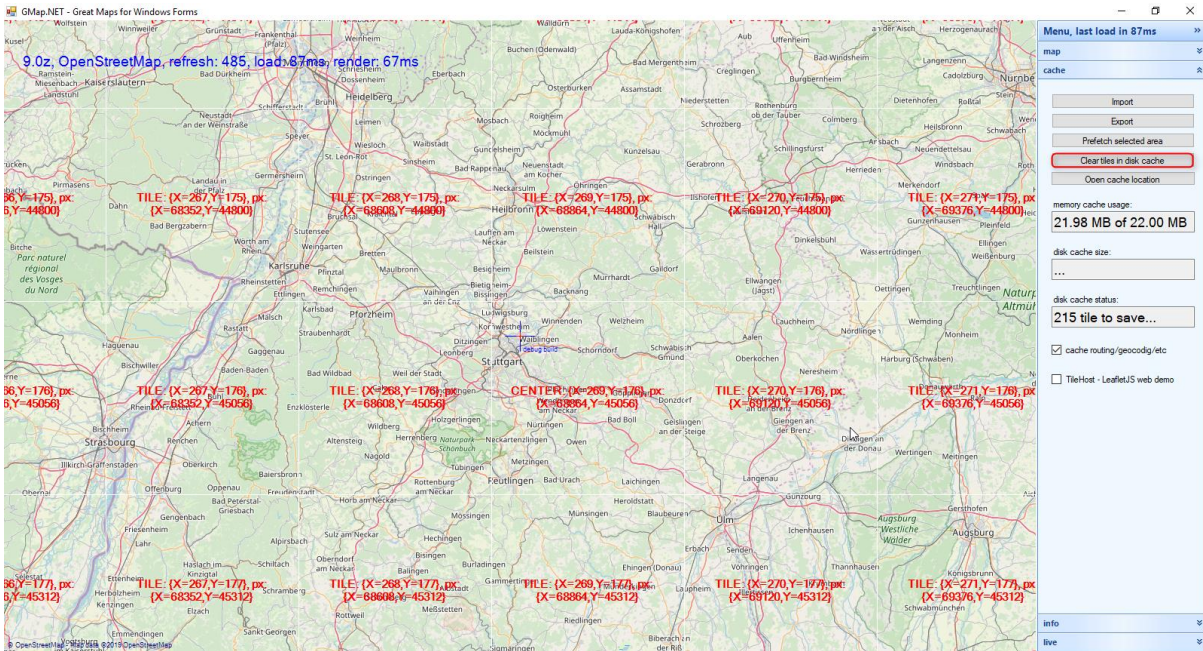
Answer:

Instruction to create an offline map for using in MDA V7.2

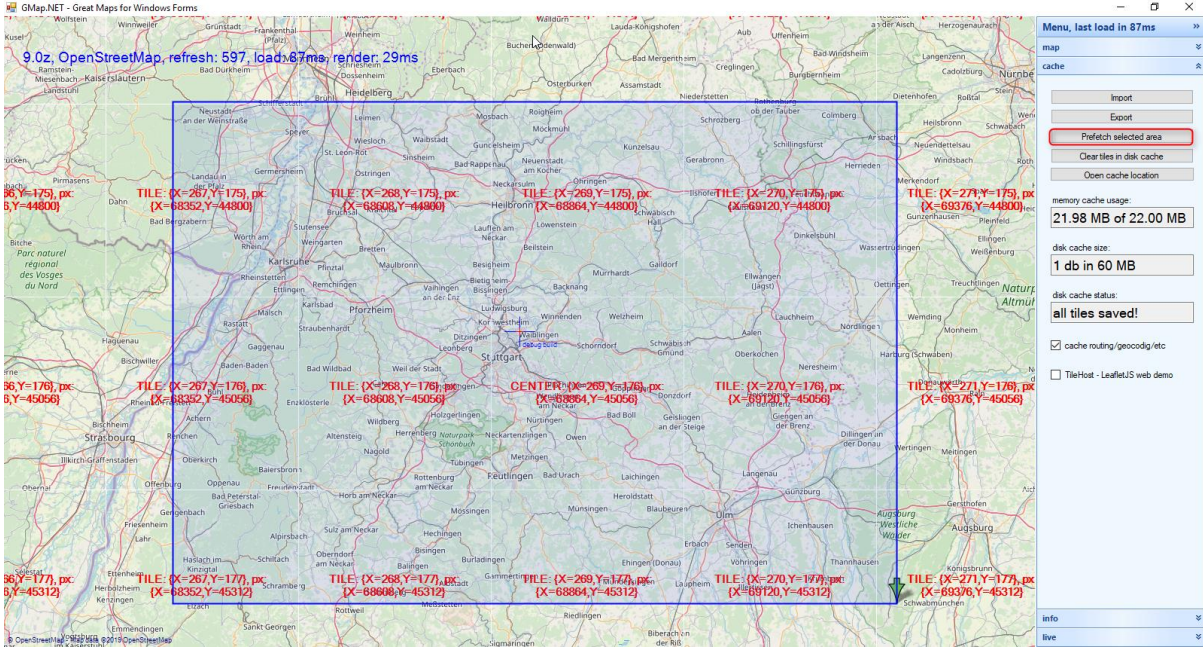
Start the application *GMap.NET* running with *Demo.WindowsForms.exe*.

Please move to your desired area with zoom (mouse wheel) and moving (right click) on the map.

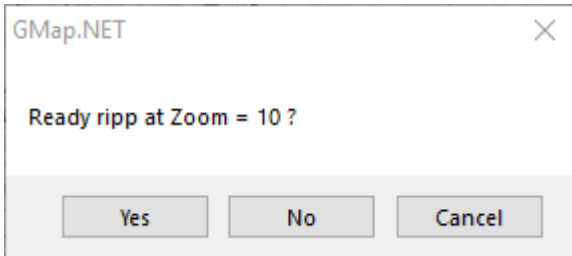
Then switch to the tab **cache**. Before creating a file, clear the tile in disk cache with clicking on the button **Clear tiles in disk cache**.



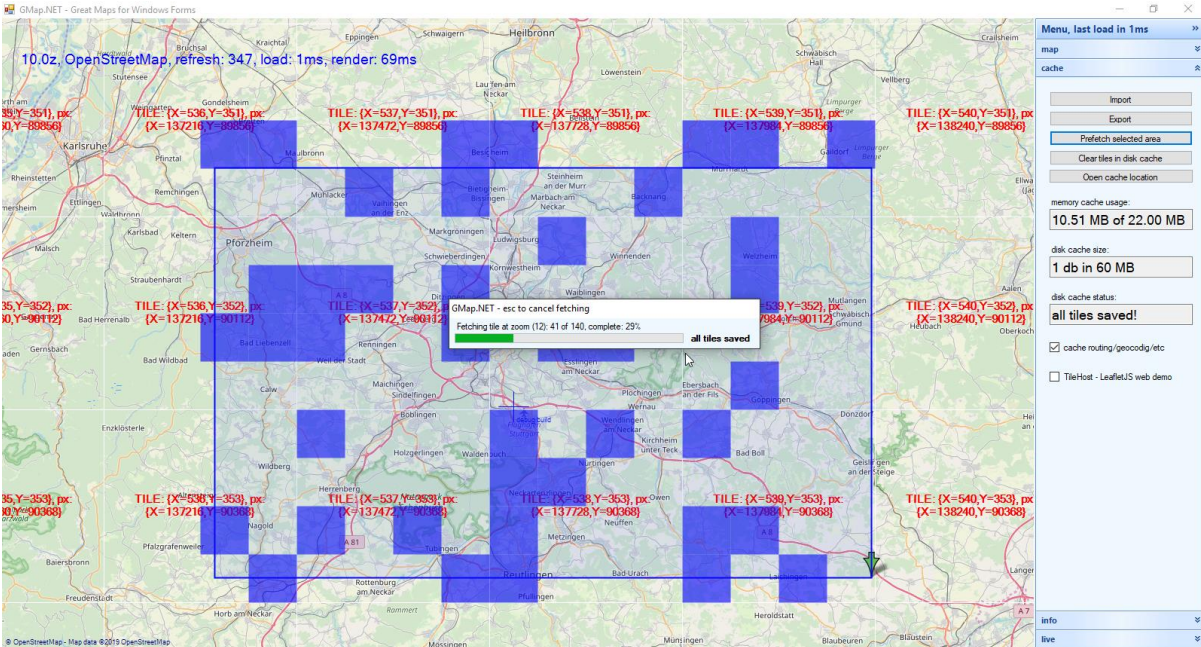
To create a map from a selected area please select an area holding **ALT** and click on the button **Prefetch selected area**.



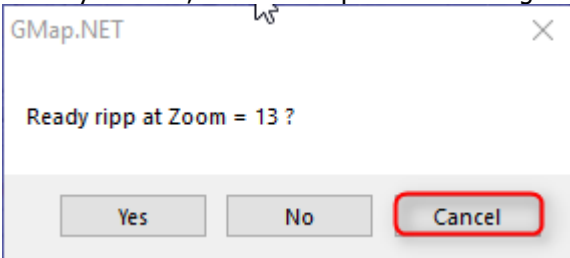
Now a window for the zoom level will be opened. Please confirm this and the next two zoom level with **OK**. This is the recommended zoom level (zoom level 9 till 11) for creating a map.



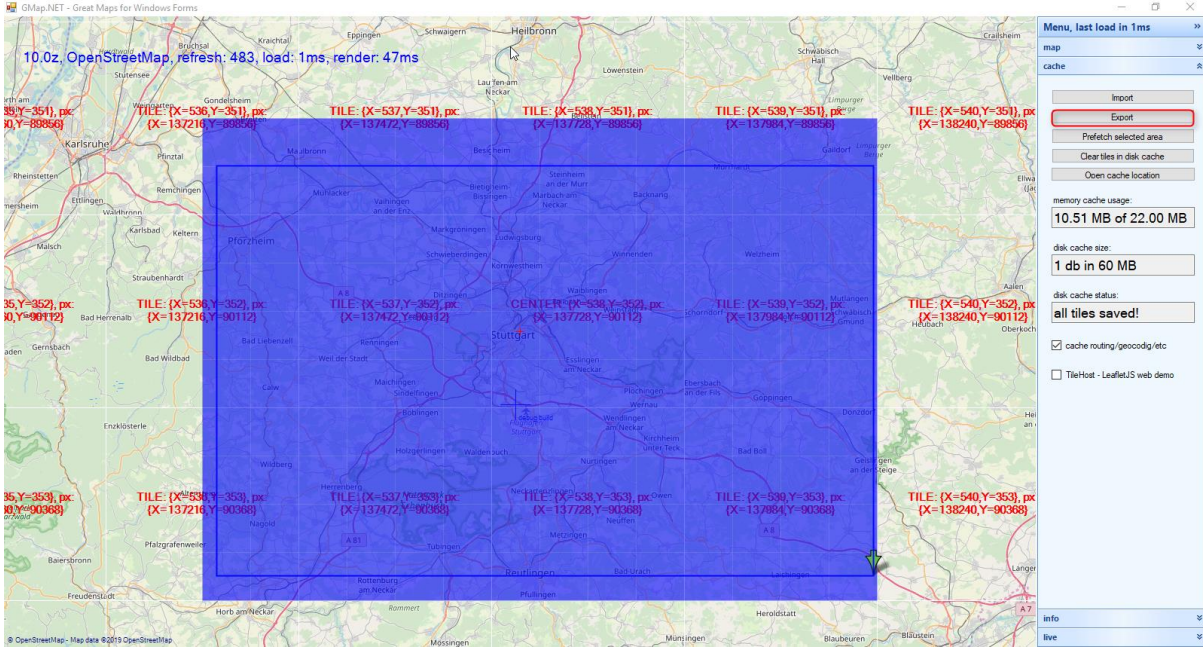
You can see the progress with filling blue cubes in the prefetched area.



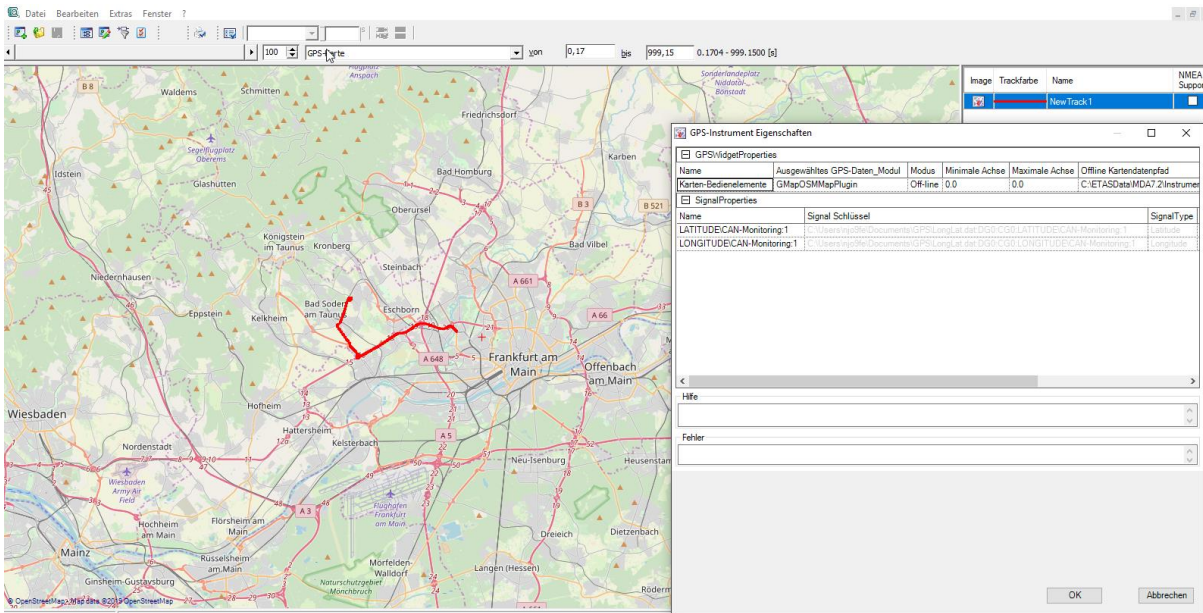
When you think, that the map is exact enough for you, press **Cancel** in the window for the actual zoom level.



To save the actual created map click on the button **Export**. The Windows File Explorer will be opened to name your file and select the file location.



Please take off the saved map on the recommended location from MDA under
 C:\ETASData\MDA7.2\Instruments\ETAS.GPSInstrument\MapControlPlugins\OSM
 Data\TileDBv5\en\





Additional information:

Download *GMap.NET* application from <https://archive.codeplex.com/?p=greatmaps>
(Visual Studio 2015 required)



In case of further questions:

Please feel free to contact our Support Center, if you have further questions.
Here you can find all information: <http://www.etas.com/en/hotlines.php?langS=true&>

This information (here referred to as „FAQ“) is provided without any (express or implied) warranty, guarantee or commitment regarding completeness or accuracy. Except in cases of willful damage, ETAS shall not be liable for losses and damages which may occur or result from the use of this information (including indirect, special or consequential damages).