

# Daisy Chain modules may not work as expected for Rapid Prototyping



## Question:

### Why do the Daisy Chain modules (like e.g. ES4xx or ES930) not work with the ES910 like expected for Rapid Prototyping applications?

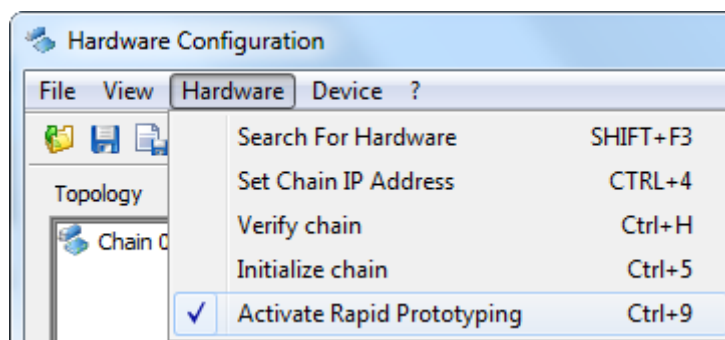
The ES4xx, ES6xx, and ES930 modules can be used for Rapid Prototyping applications with INTECRIO and ASCET-RP if they are connected to the IO port of the ES910. Even though a configuration written by the Daisy Chain Configuration Tool has been read to correctly into the hardware configuration of INTECRIO or ASCET-RP (ETC) the received and signals may not match the expectations of the user.



## Answer:

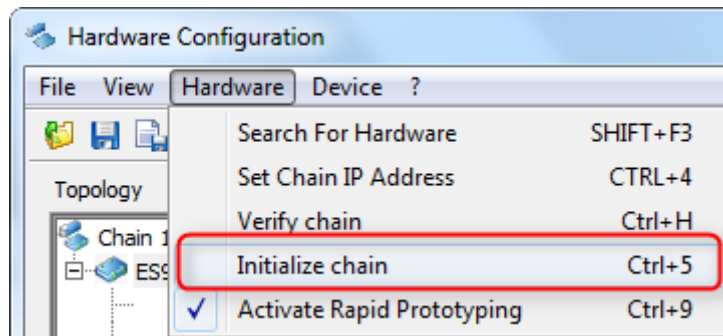
### Possible reasons:

- Rapid Prototyping Mode:** The Daisy Chain Configuration Tool usually asks on start-up if the configured chain should be used for *Measurement and Calibration Application* or *Rapid Prototyping*. Nevertheless the setting can be changed after the tool has been started with the menu *Hardware->Activate Rapid Prototyping*.



In *Rapid Prototyping* mode the measured data is transmitted from the measurement module to the ES910 immediately after acquisition in order to allow real-time processing of the data in the model running on the ES910. For the *Measurement and Calibration Application* mode data is collected and transmitted in bigger packages. This reduces the total amount of network traffic but is not suitable for real-time applications.

- Initialization of the Daisy Chain:** The ES910 cannot initialize the Daisy Chain modules on its own. The INTECRIO or ASCET-RP makes use of a configuration file which has to match the configuration already applied on the daisy chain modules. To run this configuration on the modules they need to be initialized with the Daisy Chain Configuration Tool e.g. by using the menu *Hardware->Initialize Chain*.



Remark: The menu *Device->Download Configuration* does not take effect for the configuration actually running on the module. It just stores the file on the module to be able to read it to (another) PC later, but it does not apply the configuration to be used directly.

- **Not matching software/firmware versions:** Not matching versions of the Daisy Chain Configuration Tool, INTECRIO, ASCET-RP, or the Hardware Service Pack (HSP) may block the correct operation of the complete tool chain. In general ETAS recommends to update to the latest versions of the mentioned tools.



## In case of further questions:

You will find further FAQ here: [www.etas.com/en/faq](http://www.etas.com/en/faq)

Please feel free to contact our Support Center, if you have further questions.

Here you can find all information: <http://www.etas.com/en/hotlines.php>

420812886 / 12

*This information (here referred to as „FAQ“) are provided without any (express or implied) warranty, guarantee or commitment regarding completeness or accuracy. Except in cases of willful damage, ETAS shall not be liable for losses and damages which may occur or result from the use of this information (including indirect, special or consequential damages).*