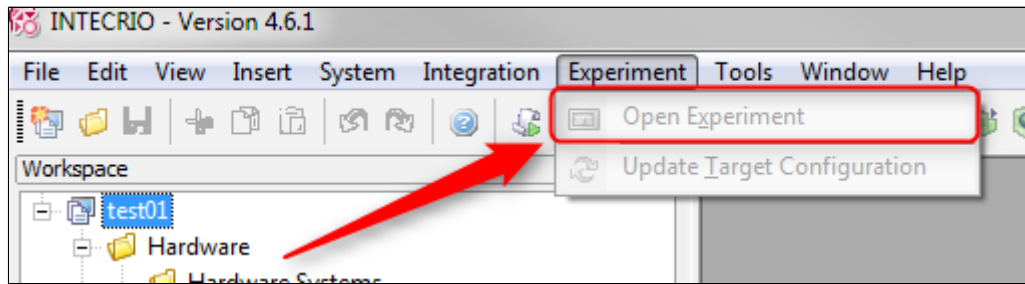




Question:

- The **Open Experiment** menu option is gray/grey/disabled/inactive/not active



- I have an issue with INTECRIO where the Experiment tab is inactive
- I click on Open Experiment and nothing happens
- How can I open the COMMON EXPERIMENT ENVIRONMENT from INTECRIO?

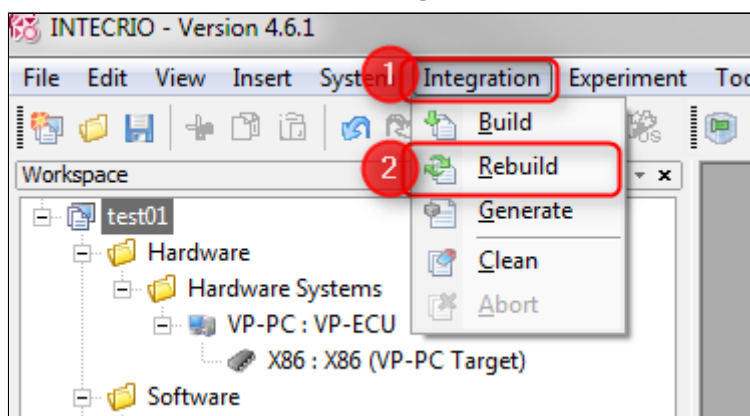


Answer:

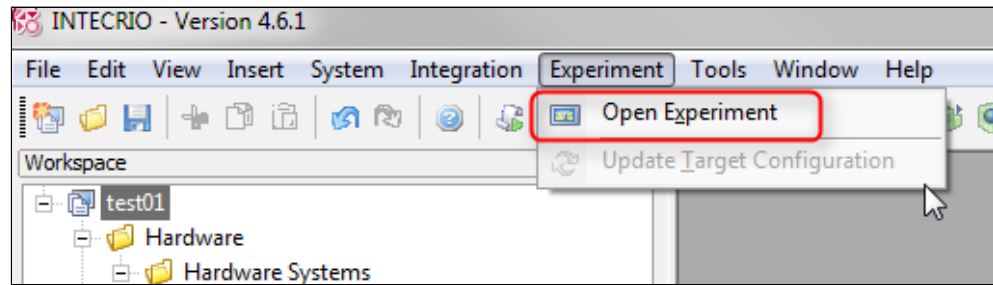
- Make sure that the **ETAS EXPERIMENT ENVIRONMENT** is installed



- This software is not included in INTECRIO
- It has to be installed separately
- Make sure that the system has been "rebuild" the system
- In **INTECRIO: Menu bar > Integration > Rebuild**



- Afterwards, the menu option **Open Experiment** is active



In case of further questions:

- You will find further FAQ here: www.etas.com/en/faq
- Please feel free to contact our Support Center, if you have further questions.
- Here you can find all information: <http://www.etas.com/en/hotlines.php>

This information (here referred to as „FAQ“) is provided without any (express or implied) warranty, guarantee or commitment regarding completeness or accuracy. Except in cases of willful damage, ETAS shall not be liable for losses and damages which may occur or result from the use of this information (including indirect, special or consequential damages).