

INTECRIO: Start a script automatically after a2l generation



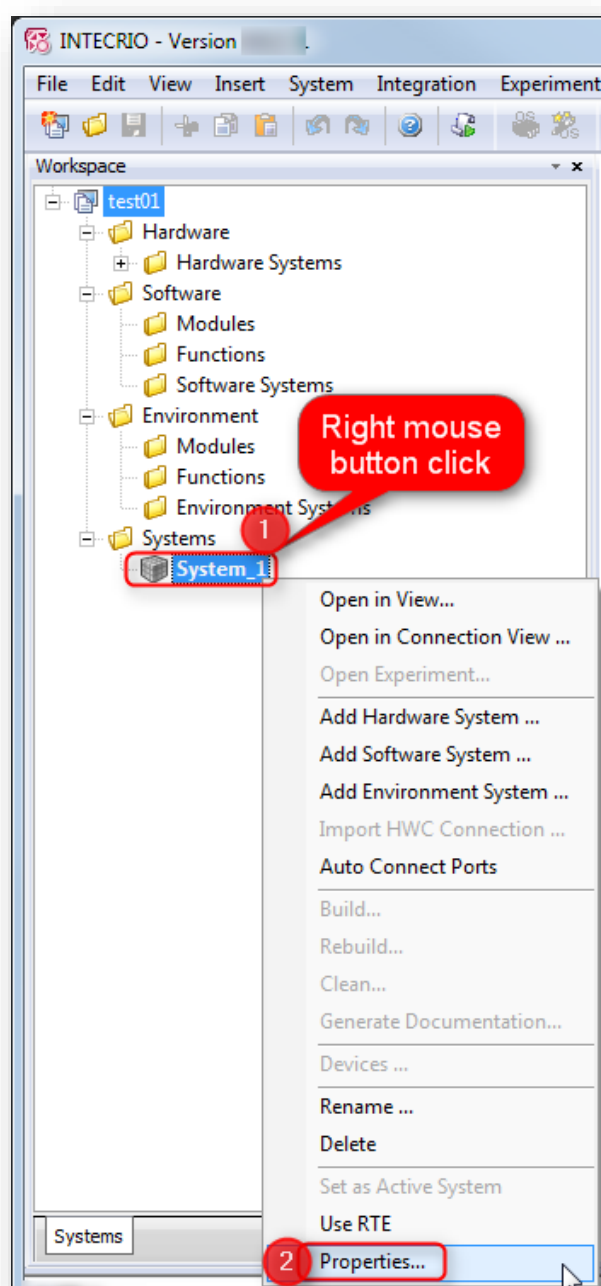
Question

- Is it possible to let a script start automatically when a2l generation is completed?
- How to start a post-ASAP-script automatically after ASAM-MCD-2MC generation

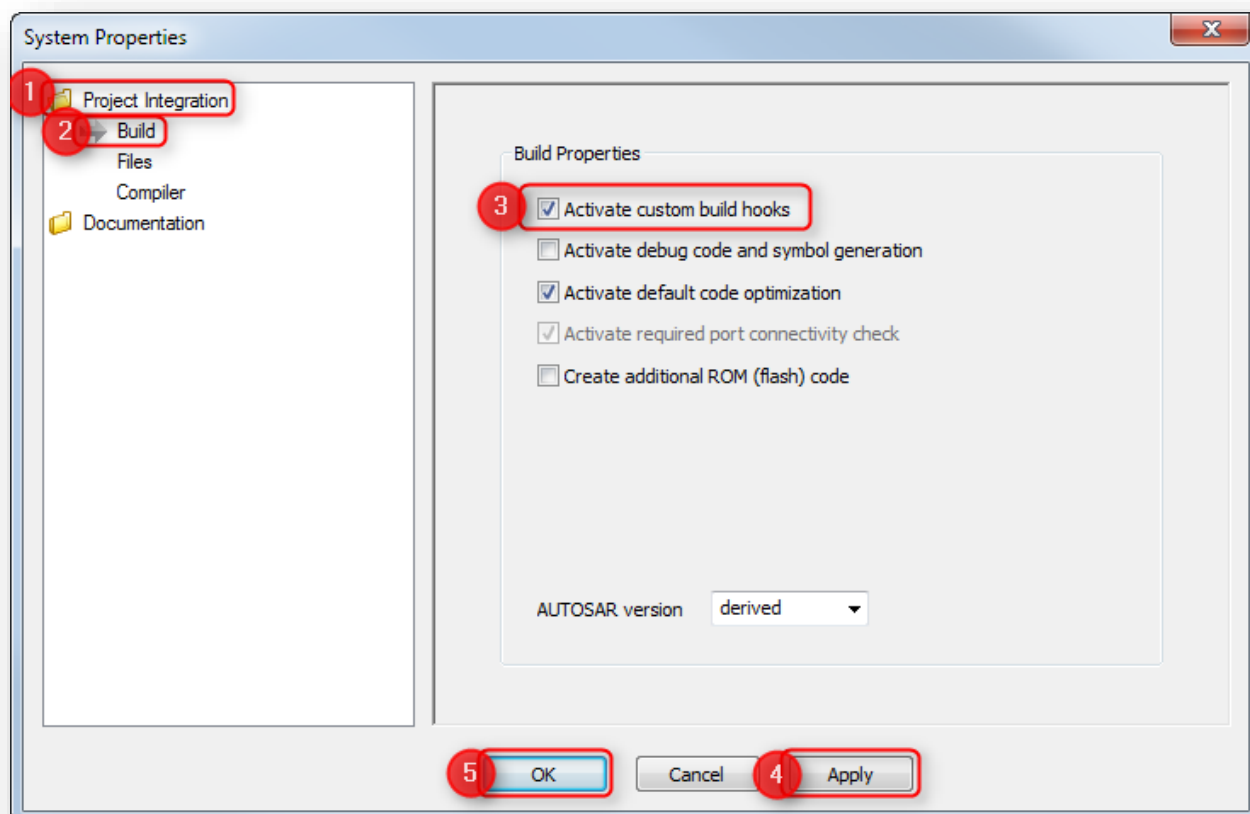


Answer

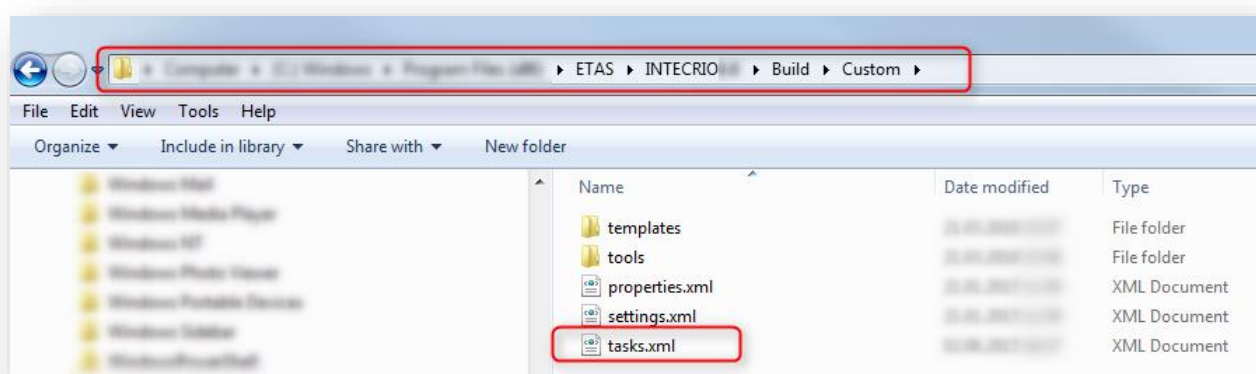
1. In **INTECRIO** → **Workspace** → <workspace> → **Systems** → On <system>: Right mouse button click → **Properties...**



2. In dialog **System Properties: Project Integration** → **Build** → Panel **Build Properties:**
 Enable **Activate custom build hooks** → **Apply** → **OK**



- This will activate the commands included in the following file:
- **<INTECRIO_installation_directory>\Build\Custom\tasks.xml**
- For example: **C:\Program Files (x86)\ETAS\INTECRIO9.9\Build\Custom\tasks.xml**



- You can edit this file with any text editor

3. There is, among other lines, example code for a2l-post-processing:

```

125 <!--
126     =====
127     User specific post-finalize hook build target
128     =====
129 -->
130 <target name="postfinalize.custom">
131     <log message="Calling custom hook postfinalize.custom" level="verbose"/>
132     <call target="generate.checksumfiles"/>
133     <!--<log message="Post-processing ASAM-MCD-2MC file..." level="info"/>
134     <apply dest="${path.work}" executable="${path.perl-5.10}\perl.exe" parallel="false">
135         <arg file="${path.tools.custom}\asam2mc_grouppatcher.pl"/>
136         <filelist dir="${path.work}" files="${projectid}${fileext.asam2mc}"/>
137         <mapper type="glob" from="*.a2l" to="*.a2l.bak"/>
138     </apply-->
139 </target>
    
```

4. The interesting part of the example is commented

```

132 <call target="generate.checksumfiles"/>
133 <!--<log message="Post-processing ASAM-MCD-2MC file..." level="info"/>
134 <apply dest="${path.work}" executable="${path.perl-5.10}\perl.exe" parallel="false">
135     <arg file="${path.tools.custom}\asam2mc_grouppatcher.pl"/>
136     <filelist dir="${path.work}" files="${projectid}${fileext.asam2mc}"/>
137     <mapper type="glob" from="*.a2l" to="*.a2l.bak"/>
138 </apply-->
139 </target>
    
```

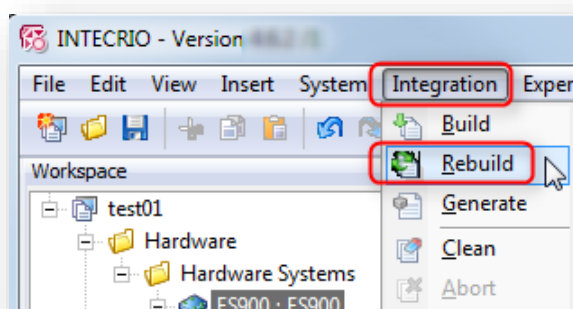
- o Remark: The referenced Perl script can be found at following location:
 <INTECRIO_installation_directory>\Build\Custom\tools\asam2mc_grouppatcher.pl

5. For testing purposes we can uncomment the example code and add some unique text string

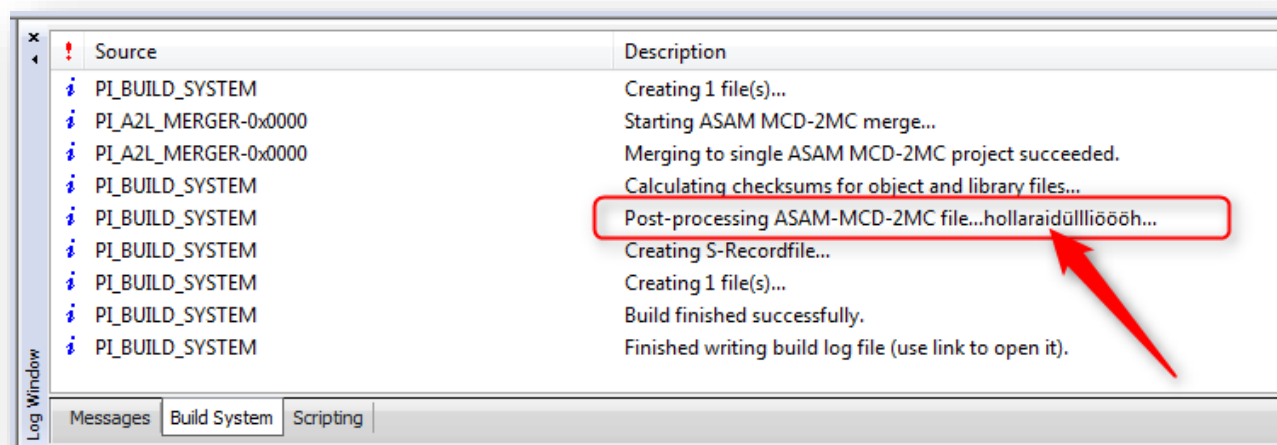
```

132 <call target="generate.checksumfiles"/>
133 <log message="Post-processing ASAM-MCD-2MC file...hollaraidüllliöööh..." level="info"/>
134 <apply dest="${path.work}" executable="${path.perl-5.10}\perl.exe" parallel="false">
135     <arg file="${path.tools.custom}\asam2mc_grouppatcher.pl"/>
136     <filelist dir="${path.work}" files="${projectid}${fileext.asam2mc}"/>
137     <mapper type="glob" from="*.a2l" to="*.a2l.bak"/>
138 </apply>
139 </target>
    
```

6. Then, in **INTECRIO** → Menu bar → **Integration** → **Rebuild**



7. In **Log Window** → Tab **Build System**: We can see the log message of our customization



Do you still have questions?

- You will find **further FAQ articles** on the ETAS homepage: www.etas.com/en/faq
- **Movies** corresponding to FAQ articles can be found on the [ETAS YouTube channel](#)
- Please feel free to contact our Support Center, if you have further questions.
- Here you can find all information: <http://www.etas.com/en/hotlines.php>

This information (here referred to as „FAQ“) is provided without any (express or implied) warranty, guarantee or commitment regarding completeness or accuracy. Except in cases of willful damage, ETAS shall not be liable for losses and damages which may occur or result from the use of this information (including indirect, special or consequential damages).