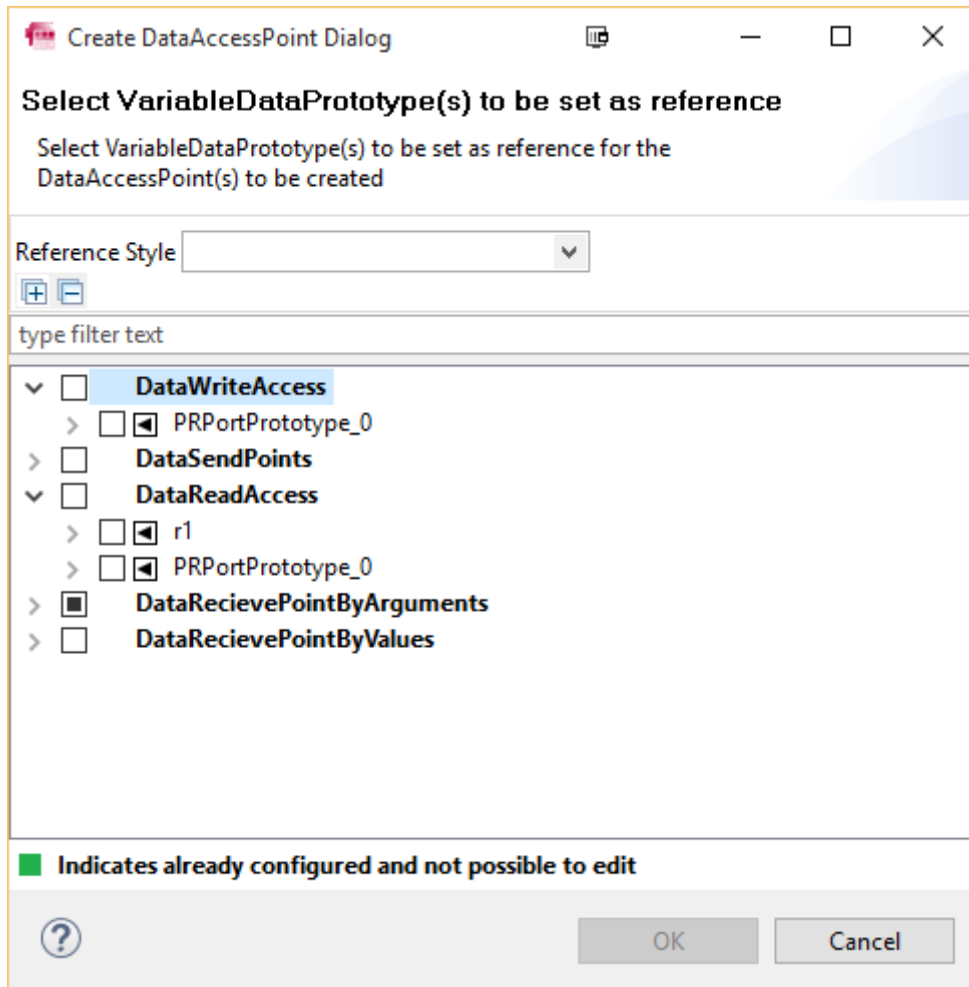




Question:

- There is a **Create DataAccessPoint Dialog** in ISOLAR-A:



- What are the steps to get to this dialog?

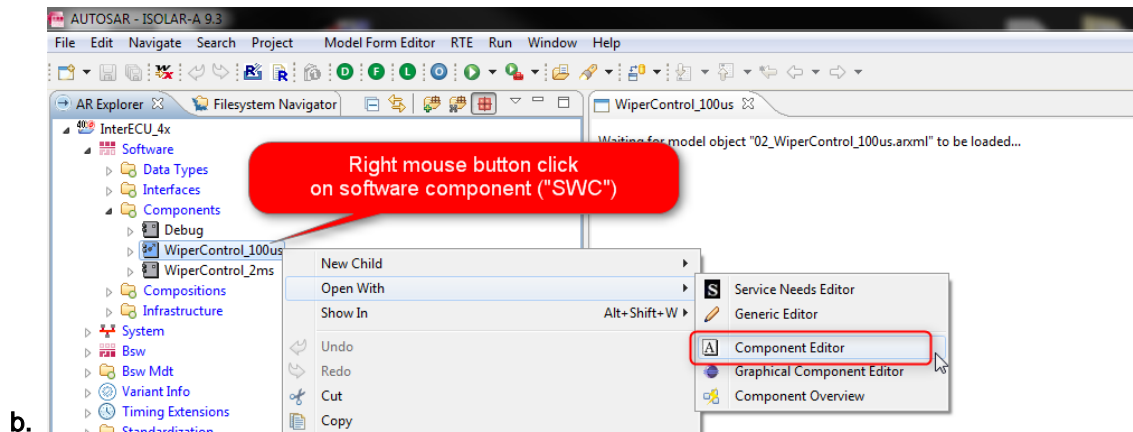


Answer:

1. Start ISOLAR-A

2. Open a software component (SWC) with **Component Editor**

- a. For example: In example project **InterECU_4x** > **Software** > **Components** > **WiperControl_100us**

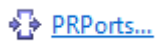


3. In **Component Editor**: Create a **PR-Port** (the look of the link depends on which version of ISOLAR-A you are using)

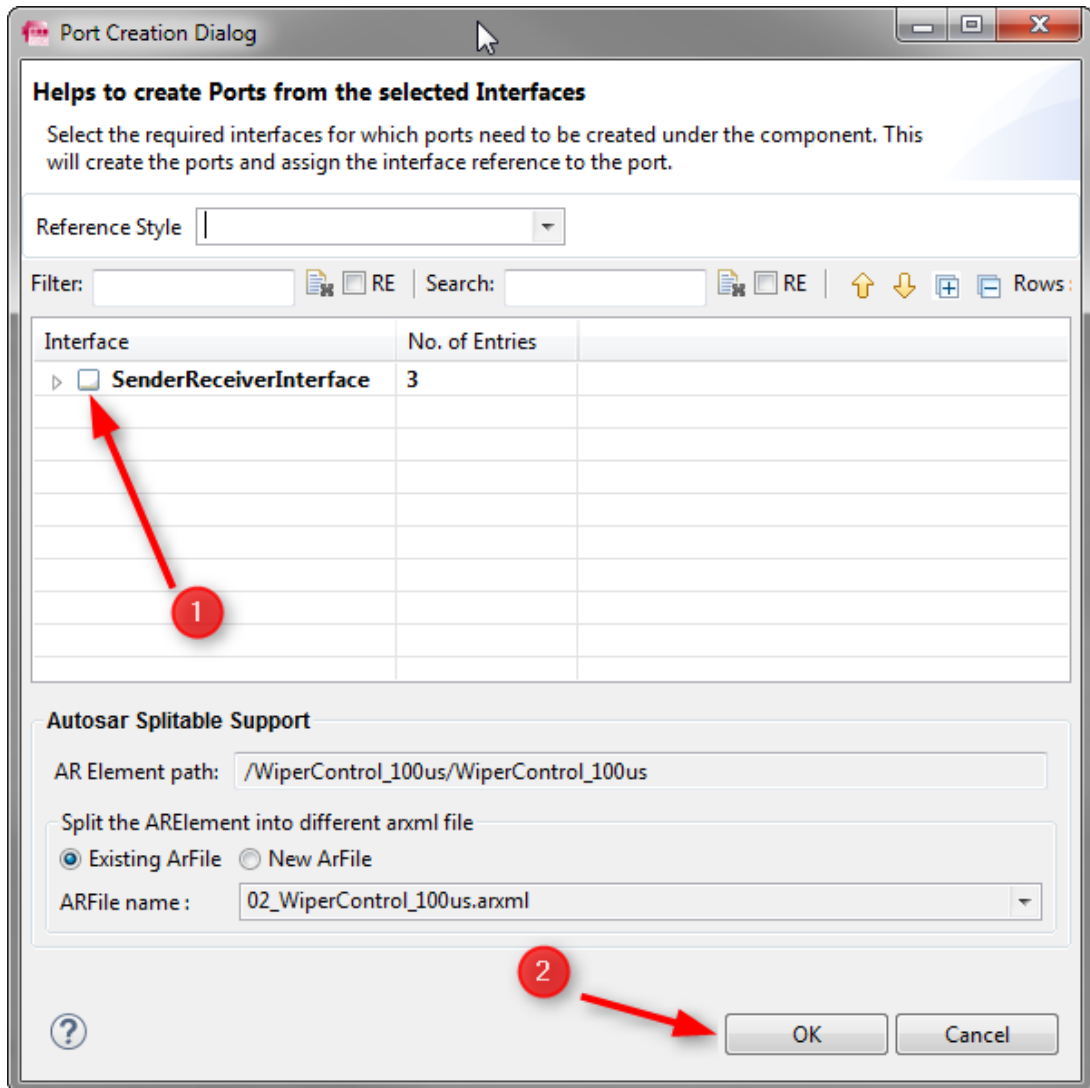
- a. In ISOLAR-A **V9.2 or older**: Click



- b. In ISOLAR-A **V9.3 or newer**: Click



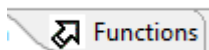
4. In **Port Creation Dialog**: Select (check) a sender-receiver interface and click **OK** button to create the PR-Port



a.

5. In the **Component Editor**: Select the **Functions** tab

- a. Click



6. On **Functions Tab**:

- There is a table that lists all available runnables
- One runnable per line
- Select a runnable (create if not existing) from the table

WiperControl_100us

Name: WiperControl_100us

Buttons: Main, Functions, Events, IRV, Others

Buttons: + Runnables, X Delete

Showing: 1/1 | Filter: []

Runnable Entity	Function Name	Advance Options
		VP Short Label
1 RE_WiperControl_100us	RE_WiperControl_100us...	

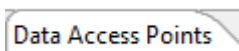
Callout 1: If there is no runnable listed in the table below: Click here to create on

Callout 2: Select a runnable

a.

7. On **Functions Tab** on the right hand side:

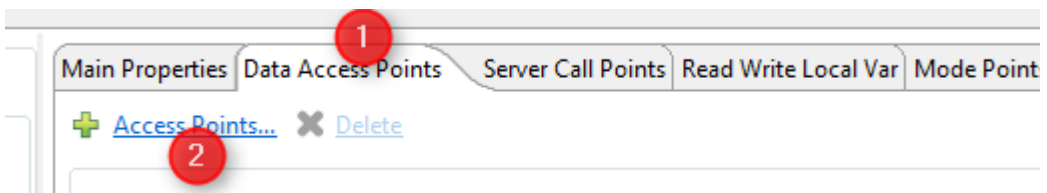
- Select the **Data Access Points Tab**: Click



- Add a new access point: Click



c.

8. This will open the **Create DataAccessPoint Dialog****Additional information:**

- Because the port created was a PR-Port (both "provide" and "require") then both "DataWriteAccess" and "DataReadAccess" points are available in the dialog



In case of further questions:

- You will find further FAQs here: www.etas.com/en/faq
- Please feel free to contact our Support Center, if you have further questions.
- Here you can find all information: <http://www.etas.com/en/hotlines.php>

This information (here referred to as „FAQ“) is provided without any (express or implied) warranty, guarantee or commitment regarding completeness or accuracy. Except in cases of willful damage, ETAS shall not be liable for losses and damages which may occur or result from the use of this information (including indirect, special or consequential damages).