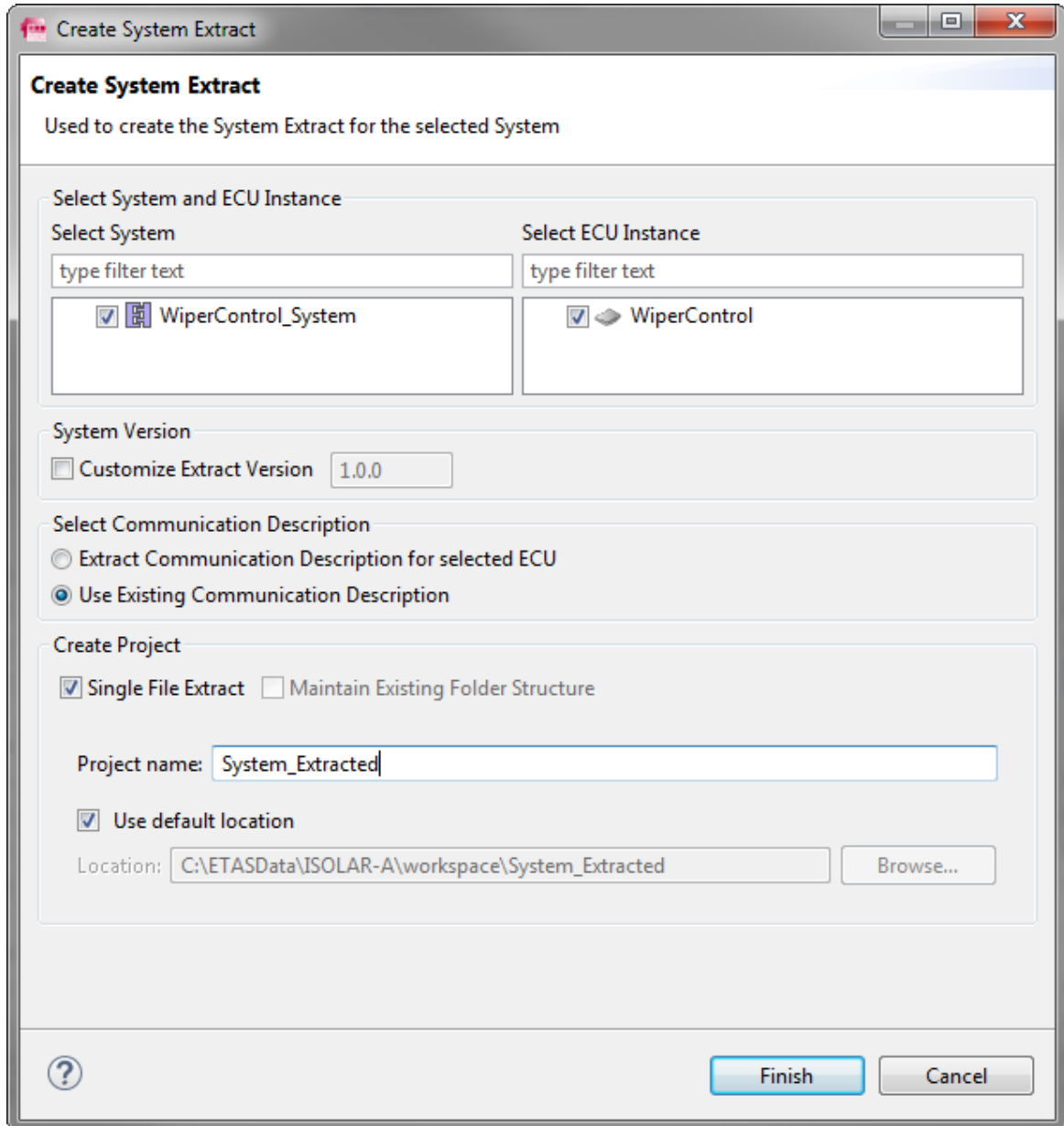




## Question:

- In ISOLAR-A there is a **Create System Extract** dialog

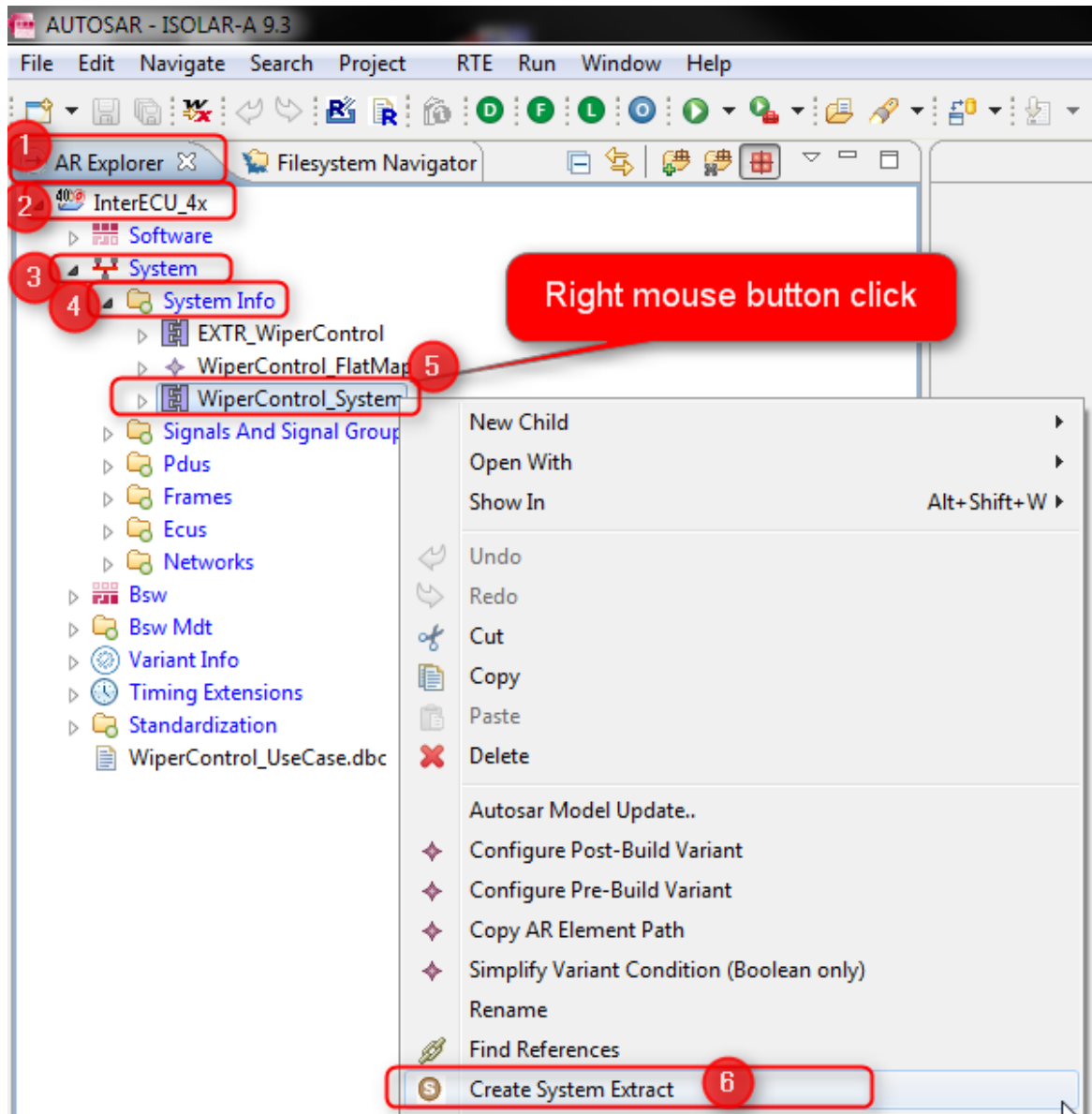


- How to get to this dialog?
- Create System Extract dialog: How to get there?



## Answer:

- In **AR Explorer**: AUTOSAR project (for example: "InterECU\_4x") > **System** > **System Info** > Right click on System Info element (for example: "WiperControl\_System") > **Create System Extract**



## In case of further questions:

- You will find further FAQ here: [www.etas.com/en/faq](http://www.etas.com/en/faq)
- Please feel free to contact our Support Center, if you have further questions.
- Here you can find all information: <http://www.etas.com/en/hotlines.php>

This information (here referred to as „FAQ“) is provided without any (express or implied) warranty, guarantee or commitment regarding completeness or accuracy. Except in cases of willful damage, ETAS shall not be liable for losses and damages which may occur or result from the use of this information (including indirect, special or consequential damages).