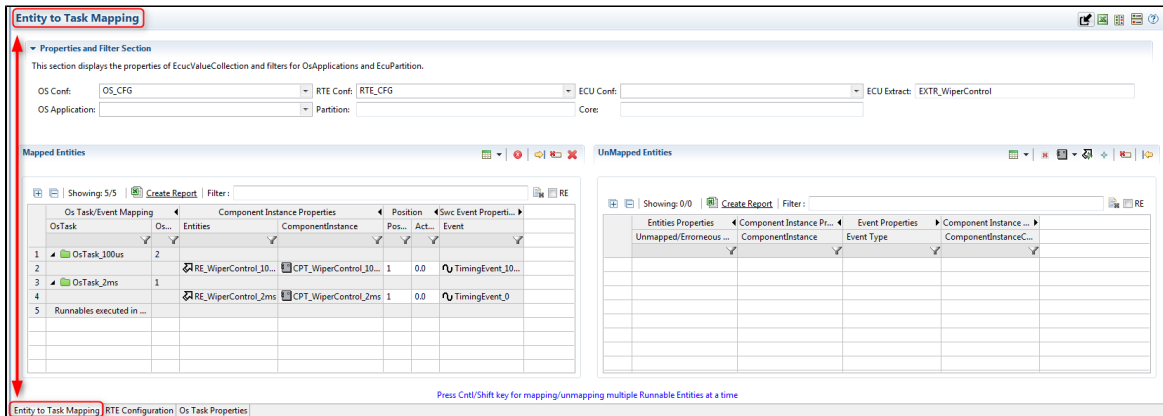




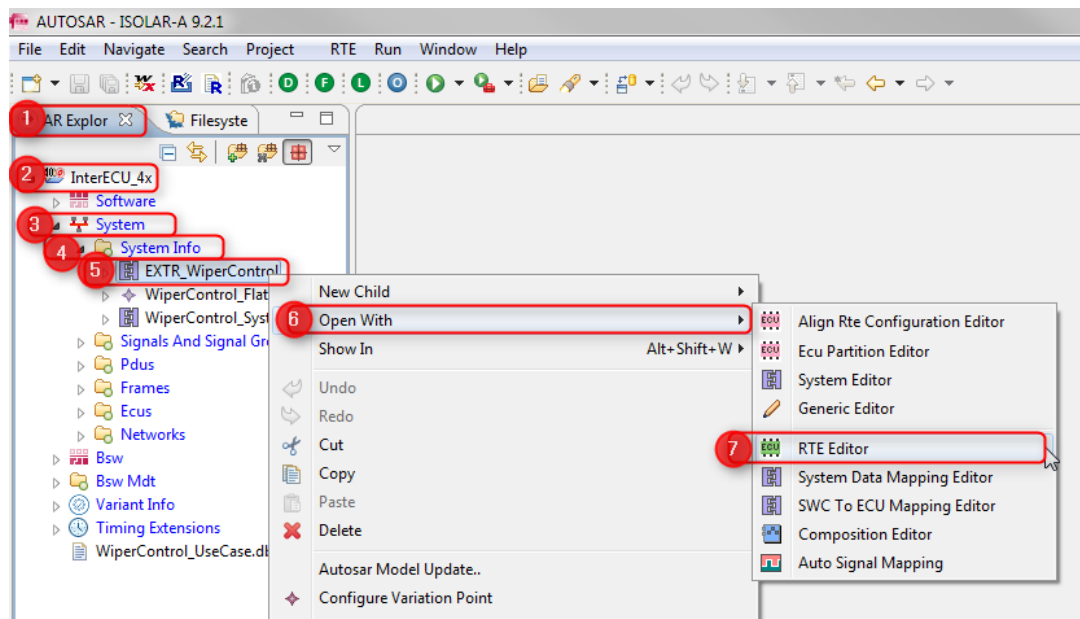
Question:

- How to get to the tab **Entity to Task Mapping**
- I want to get to the tab that can be seen on following image:



Answer:

- In **ISOLAR-A** under **AR Explorer** > In **AUTOSAR Project** > **System** > **System Info** > On **System Info Element**: Right mouse button click > **RTE Editor**



In case of further questions:

- You will find further FAQ here: www.etas.com/en/faq
- Please feel free to contact our Support Center, if you have further questions.

- Here you can find all information: <http://www.etas.com/en/hotlines.php>

This information (here referred to as „FAQ“) is provided without any (express or implied) warranty, guarantee or commitment regarding completeness or accuracy. Except in cases of willful damage, ETAS shall not be liable for losses and damages which may occur or result from the use of this information (including indirect, special or consequential damages).