



## Question:

---

- We are currently looking for some AUTOSAR ARXML file for CAN Network needed for internal tests.
- Do you have such an AUTOSAR ARXML file for CAN Network?



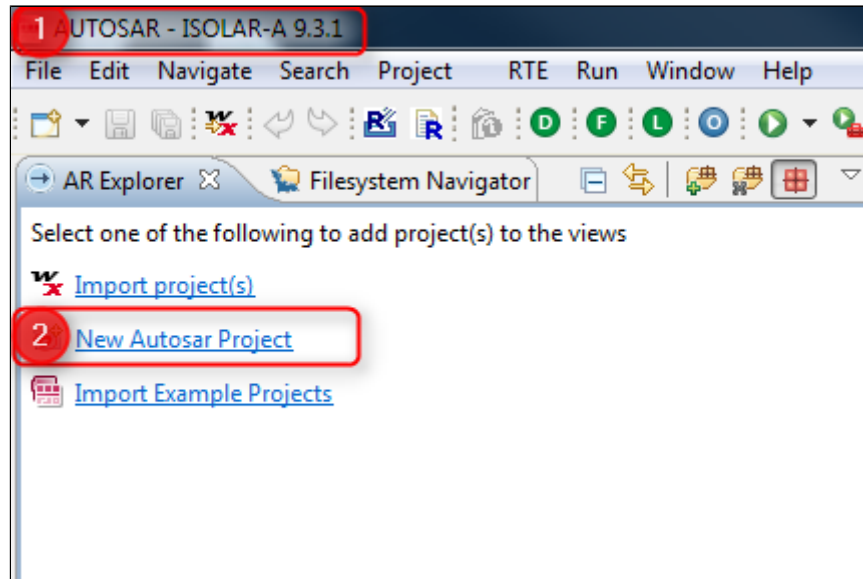
## Answer:

---

- If you use a recent **ISOLAR-A** version (e.g. 9.3), you can generate such a file with the following steps:

## 1. Create a new AUTOSAR project

### a. In ISOLAR-A > AR Explorer: Click on New Autosar Project

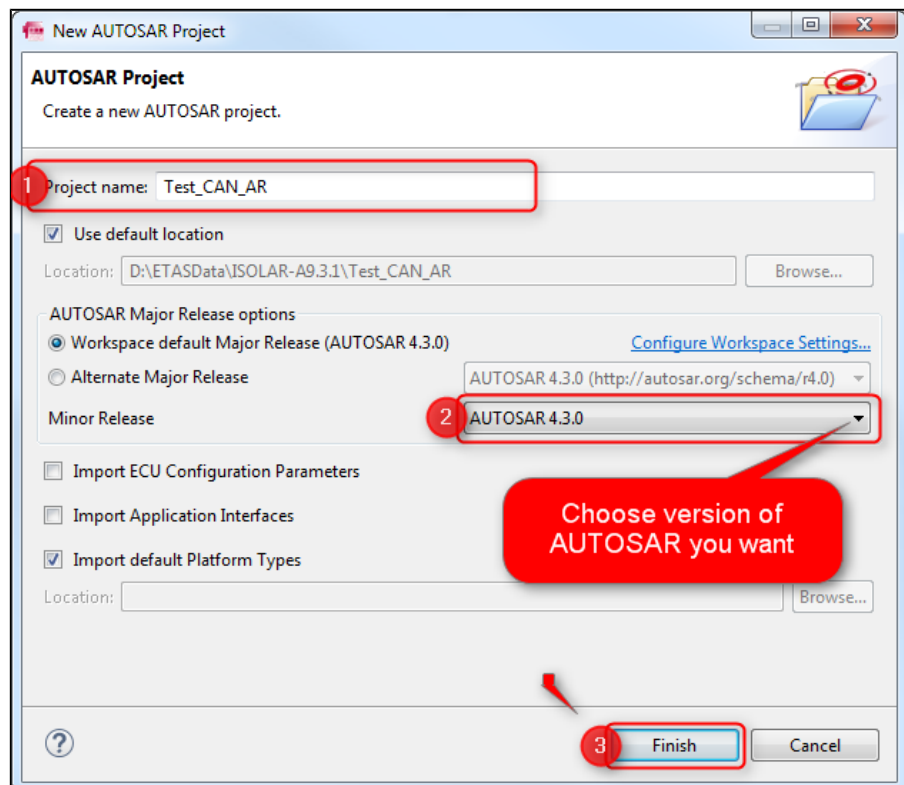


i.

### b. In dialog **New AUTOSAR Project** > In field **Project name**: Type a name for the project

### c. In dialog **New AUTOSAR Project** > **AUTOSAR Major Release options** > In field **Minor Release**: Select the AUTOSAR version

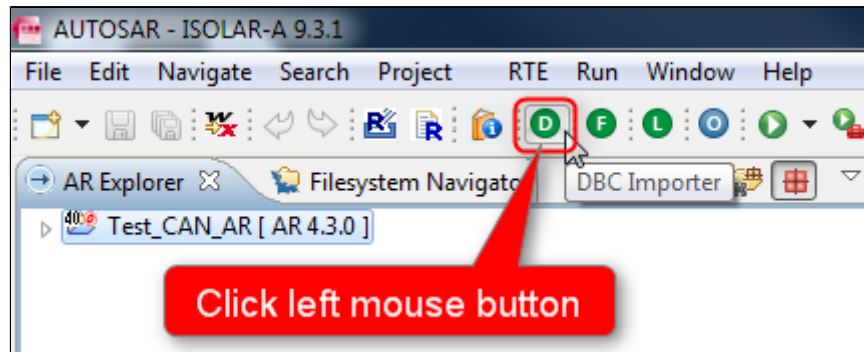
### d. Then click **Finish** button



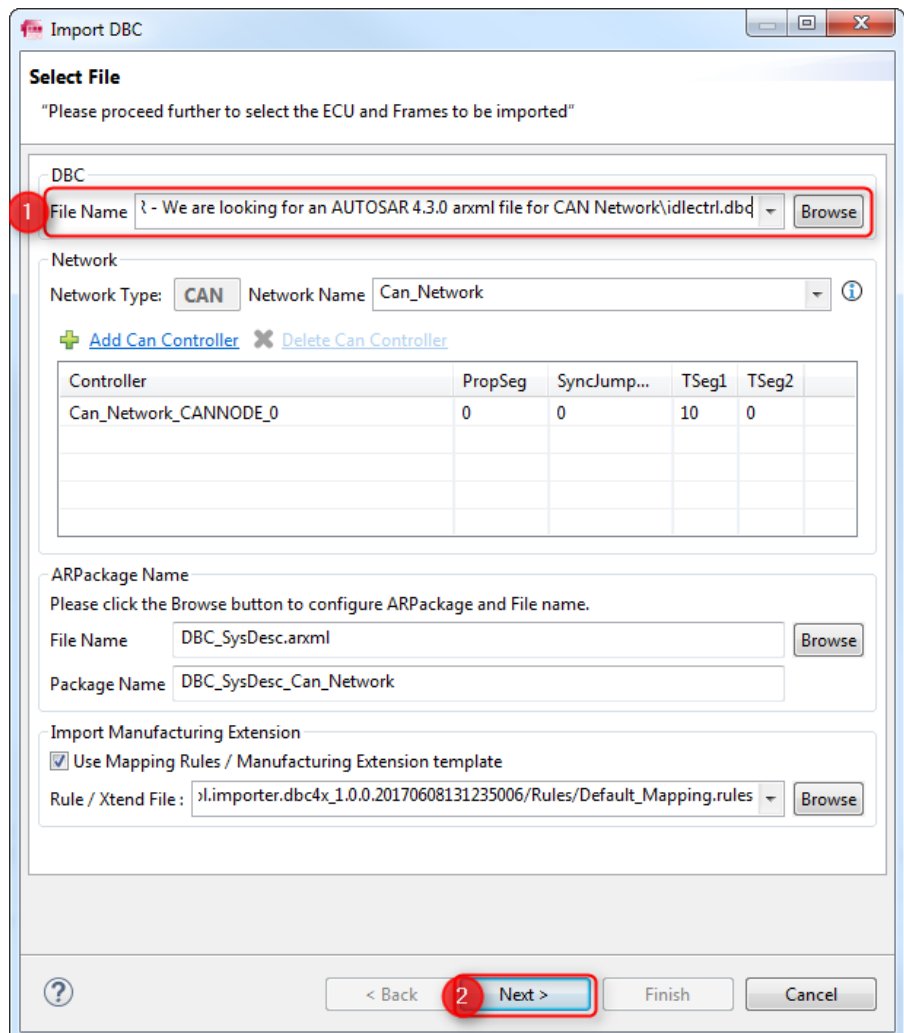
i.

## 2. Import a DBC file

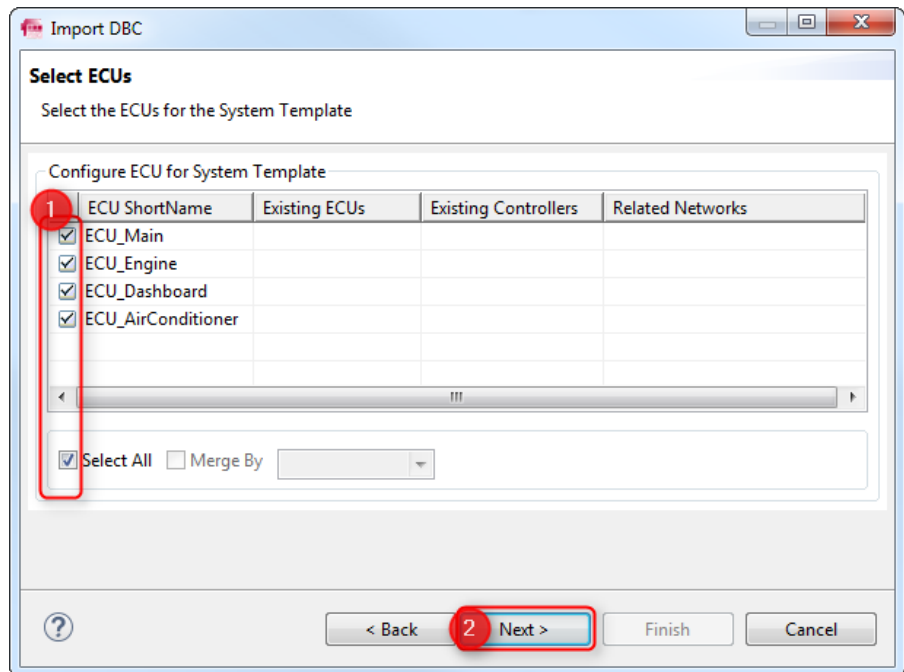
- a. In **ISOLAR-A > Toolbar**: Click on icon **DBC Importer** (White "D" in green ball)



- b. In dialog **Import DBC > DBC > In field: File Name > Click on button Browse** and select path and name of the DBC file that you want to import

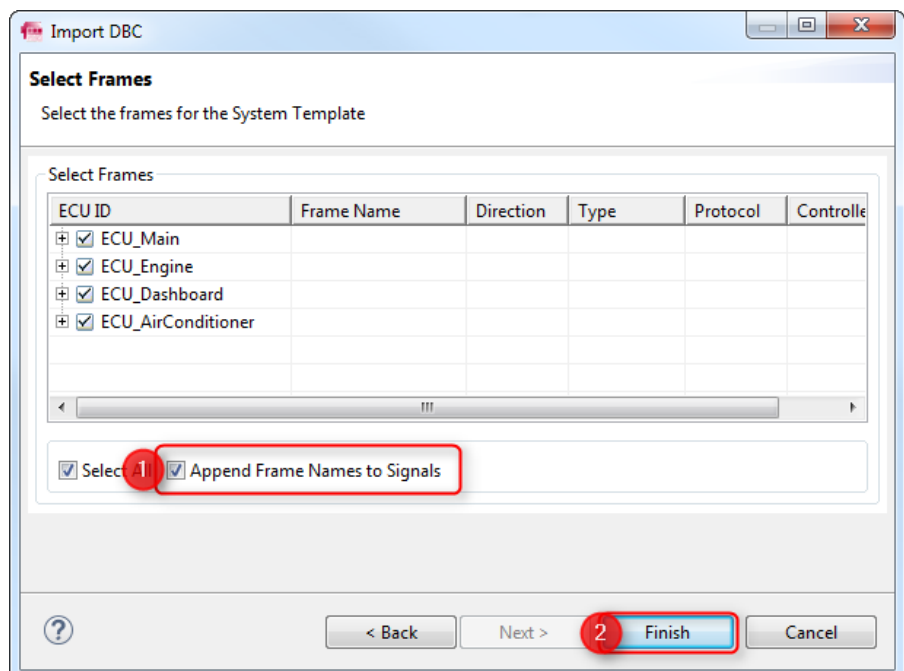


- c. In dialog **Import DBC** (Screen 2) > Select single ECUs respectively **Select All**, then click button **Next**



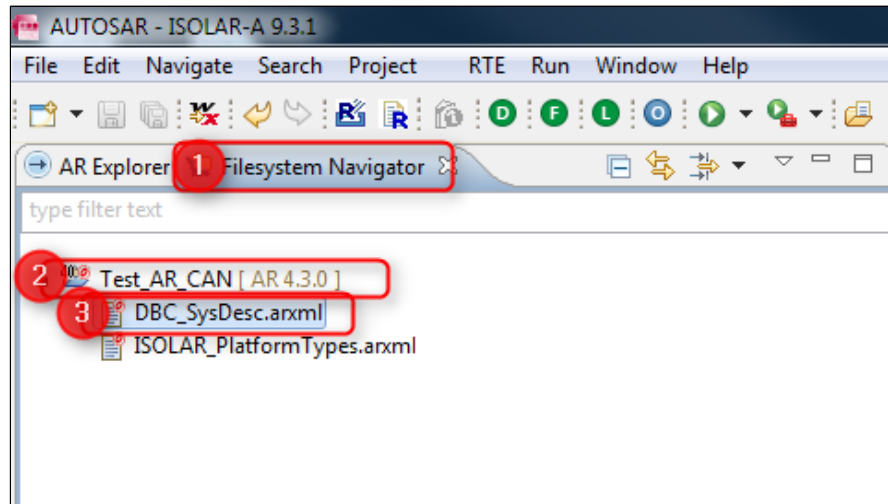
i.

- d. In dialog **Import DBC** (Screen 3) > Feel free (no must) to check **Append Frame Names to Signals** > Click button **Finish**



i.

- e. In ISOLAR-A > Filesystem Navigator: Find the generated arxml file

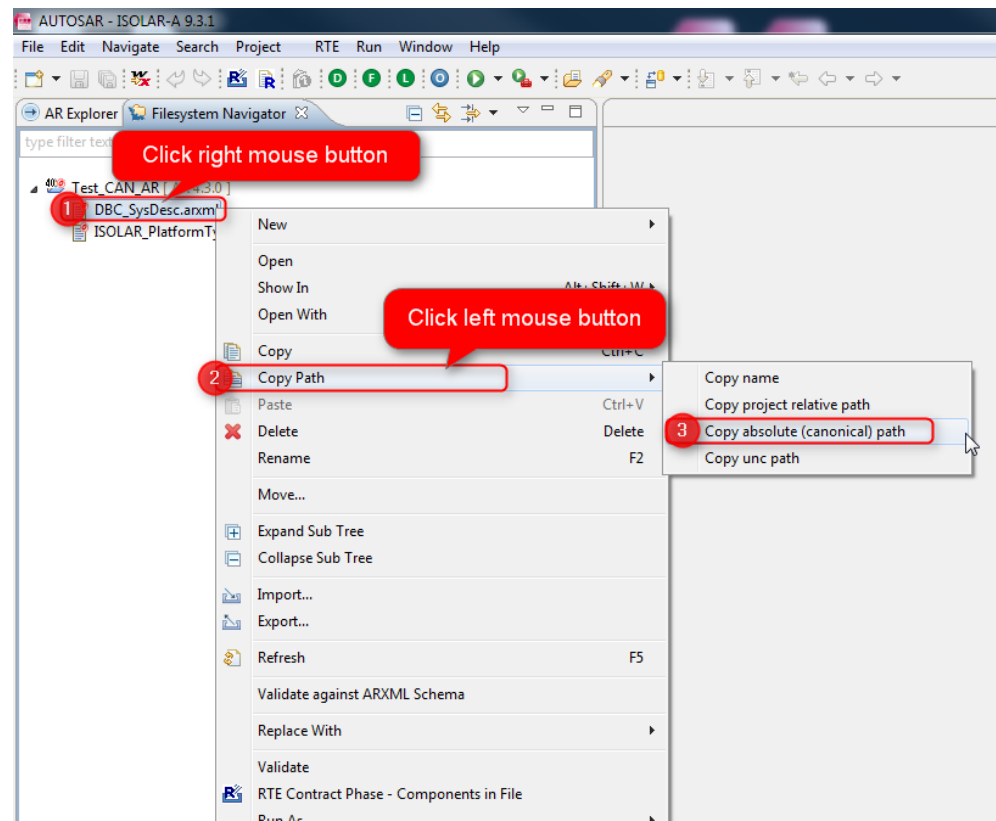


i.



### Additional information:

- To get at the current location of the file on the filesystem
  1. Move mouse pointer on the **arxml** file > Click right mouse button > **Copy Path** > **Copy absolute (canonical) path**



a.

2. Now the path to the file is in the clipboard: Access it via keys **CTRL + v**

- It is possible to just **drag and drop** the file from ISOLAR-A to Microsoft Windows File Explorer



### In case of further questions:

---

- You will find further FAQ here: [www.etas.com/en/faq](http://www.etas.com/en/faq)
- Please feel free to contact our Support Center, if you have further questions.
- Here you can find all information: <http://www.etas.com/en/hotlines.php>

This information (here referred to as „FAQ“) is provided without any (express or implied) warranty, guarantee or commitment regarding completeness or accuracy. Except in cases of willful damage, ETAS shall not be liable for losses and damages which may occur or result from the use of this information (including indirect, special or consequential damages).