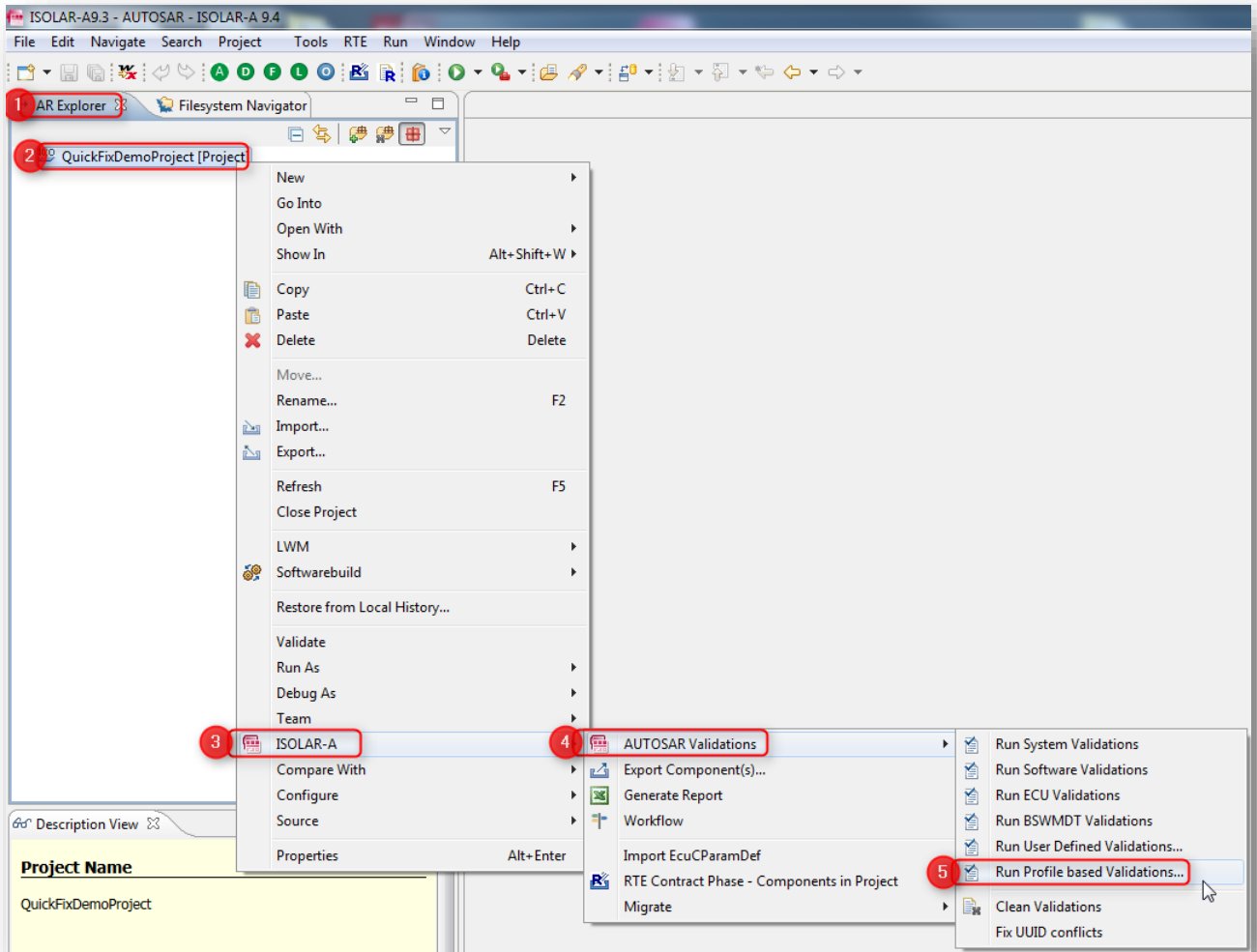


ISOLAR-A - How to use the Quick Fix feature?

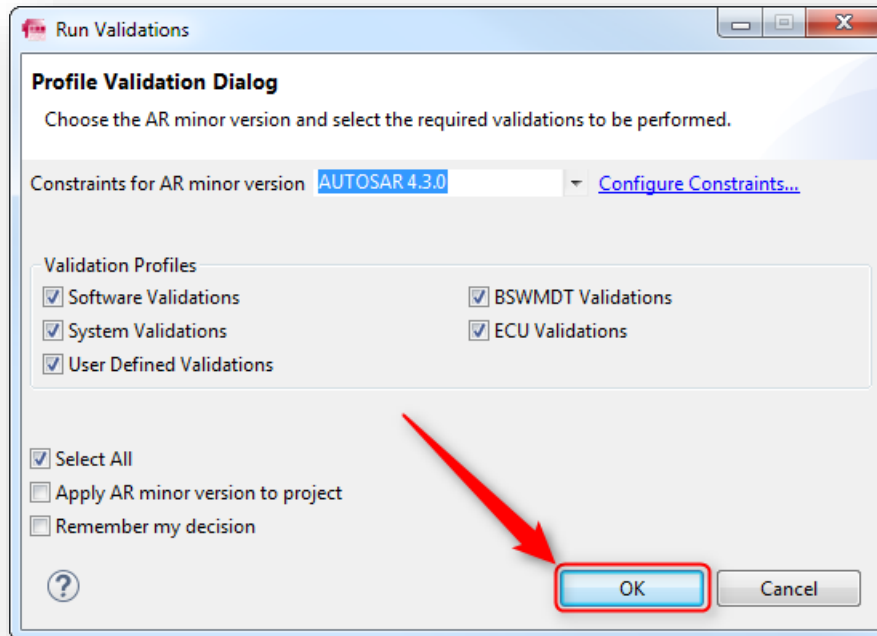


Question:

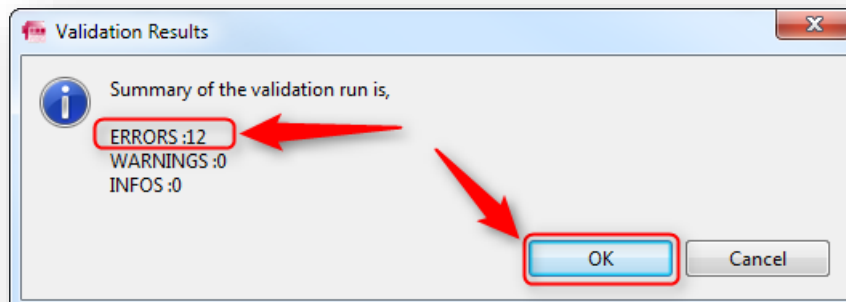
- How to use the **Quick Fix** feature?
- Where is the quick fix feature?
- Running **Validations** ...:
 - In **ISOLAR-A** under **AR Explorer** > On AUTOSAR project: Right mouse button click > **ISOLAR-A** > **AUTOSAR Validations** > **Run Profile based Validations...**



- ...with default settings...



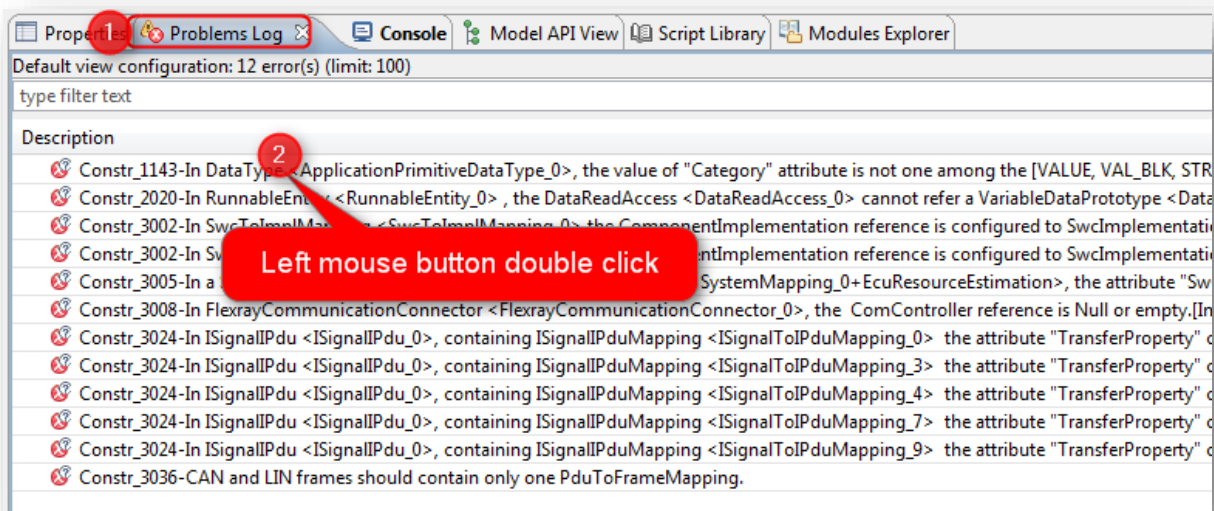
- ...results in errors:



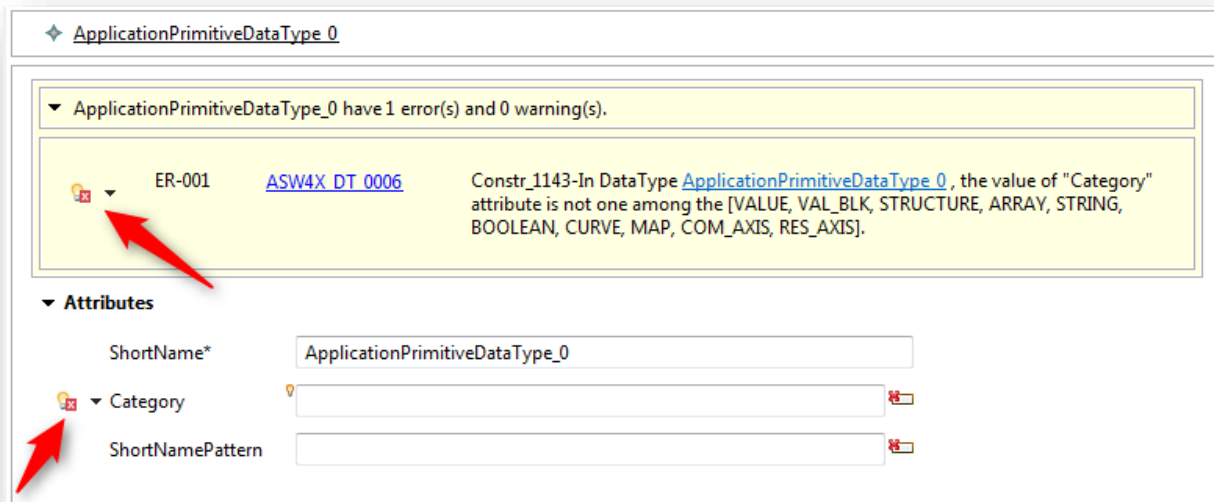
- How to fix these errors?
- Is there help available to fix these errors?

**Answer:**

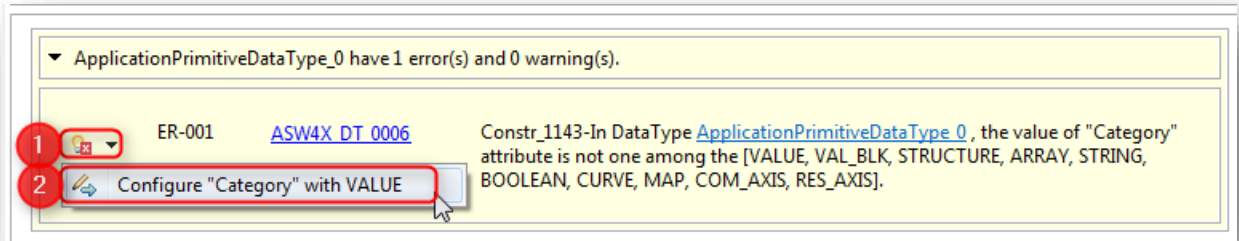
- The Quick Fix feature is available in **ISOLAR-A V9.3** and greater
 - The Quick Fix feature provides various options in **Generic Editor** to fix errors after running validations
- **Instructions:**
 - Navigate to tab **Problems Log**
 - Every single line there is a single error message
 - Hover the mouse pointer over a line and double click the left mouse button



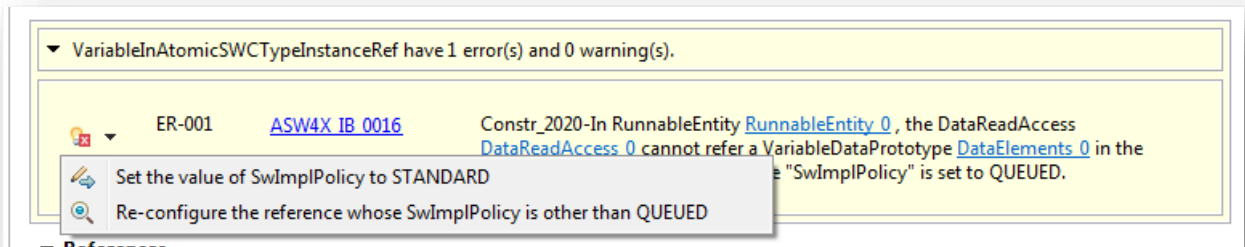
- In the **Generic Editor** there will be **light bulb icons**:



- Click on a **light bulb** icon and select the relevant option from drop down



- Sometimes there are several options for a quick fix available, example:



- Just move the mouse pointer to the option you want and then click with left mouse button



Do you still have questions?

- You will find **further FAQ articles** on the ETAS homepage: www.etas.com/en/faq
- **Movies** corresponding to FAQ articles can be found on the [ETAS YouTube channel](#) as well
- Please feel free to contact our Support Center, if you have further questions.
- Here you can find all information: <http://www.etas.com/en/hotlines.php>

This information (here referred to as „FAQ“) is provided without any (express or implied) warranty, guarantee or commitment regarding completeness or accuracy. Except in cases of wilful damage, ETAS shall not be liable for losses and damages which may occur or result from the use of this information (including indirect, special or consequential damages).