

ISOLAR-A - How to find the Composition Overview



Question:

- Is there a view that shows the complete overview of an AUTOSAR composition with respect to ports and connectors?
- How to find the composition editor in ISOLAR-A?
- How do I get to the tab **Composition Overview**?

Composition Overview

Connections and Open Ports

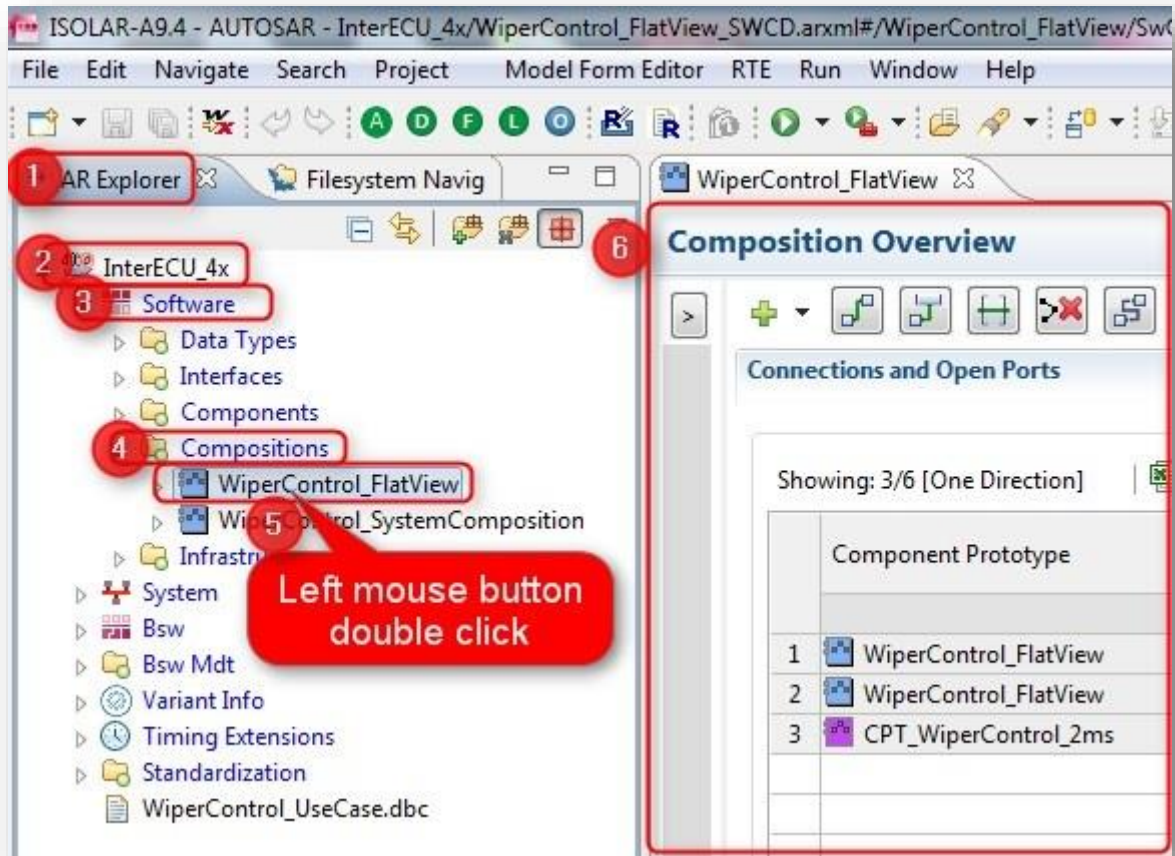
Showing: 3/6 [One Direction] Filter:

	Component Prototype	Connector Name	Port	Interface Type	Status	Connected Composition	Connected Port	Connected Port Interface	File Name
1	WiperControl_FlatView	DelegationSwConnector_0	P_Debug	Debug_SRI	Valid	CPT_WiperControl_2ms	P_Debug	Debug_SRI	WiperControl_FlatView_SWCD.xml
2	WiperControl_FlatView	DelegationSwConnector_1	R_Torque	Torque_SRI	Valid	CPT_WiperControl_2ms	R_Torque	Torque_SRI	WiperControl_FlatView_SWCD.xml
3	CPT_WiperControl_2ms	AssemblySwConnector_0	P_Current	Current_SRI	Valid	CPT_WiperControl_100us	R_Current	Current_SRI	WiperControl_FlatView_SWCD.xml



Answer:

- This feature is available in **ISOLAR-A V9.3** and greater
- The **Composition Editor** shows the complete overview of the composition with respect to ports and connectors
 - In **ISOLAR-A: AR Explorer** > AUTOSAR project > **Software** > **Compositions** > On composition: Left mouse button double click



- On the left hand side the **Composition Overview** respectively **Composition Editor** will be displayed



Do you still have questions?

- You will find **further FAQ articles** on the ETAS homepage: www.etas.com/en/faq
- **Movies** corresponding to FAQ articles can be found on the [ETAS YouTube channel](#) as well
- Please feel free to contact our Support Center, if you have further questions.
- Here you can find all information: <http://www.etas.com/en/hotlines.php>

This information (here referred to as „FAQ“) is provided without any (express or implied) warranty, guarantee or commitment regarding completeness or accuracy. Except in cases of willful damage, ETAS shall not be liable for losses and damages which may occur or result from the use of this information (including indirect, special or consequential damages).