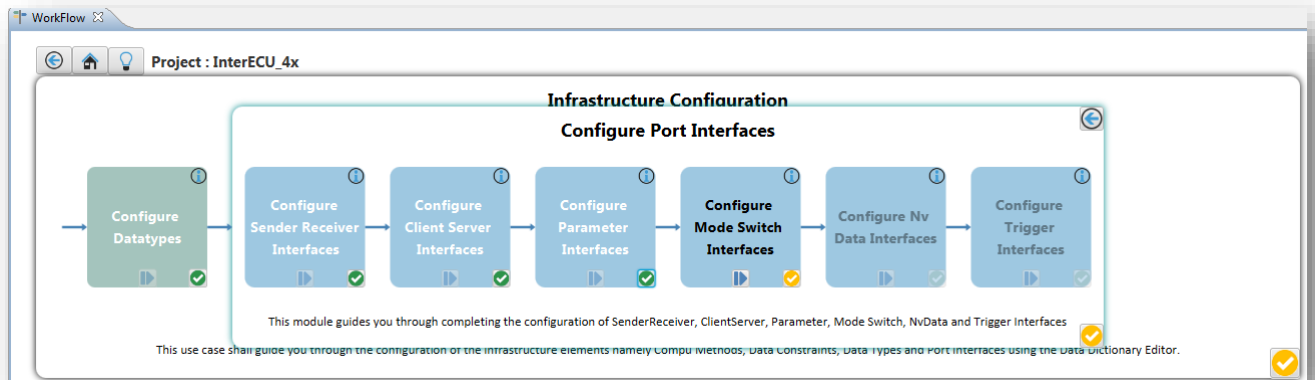


ISOLAR-A - How to create a workflow for AUTOSAR authoring



Question:

- How to create a workflow in ISOLAR-A?



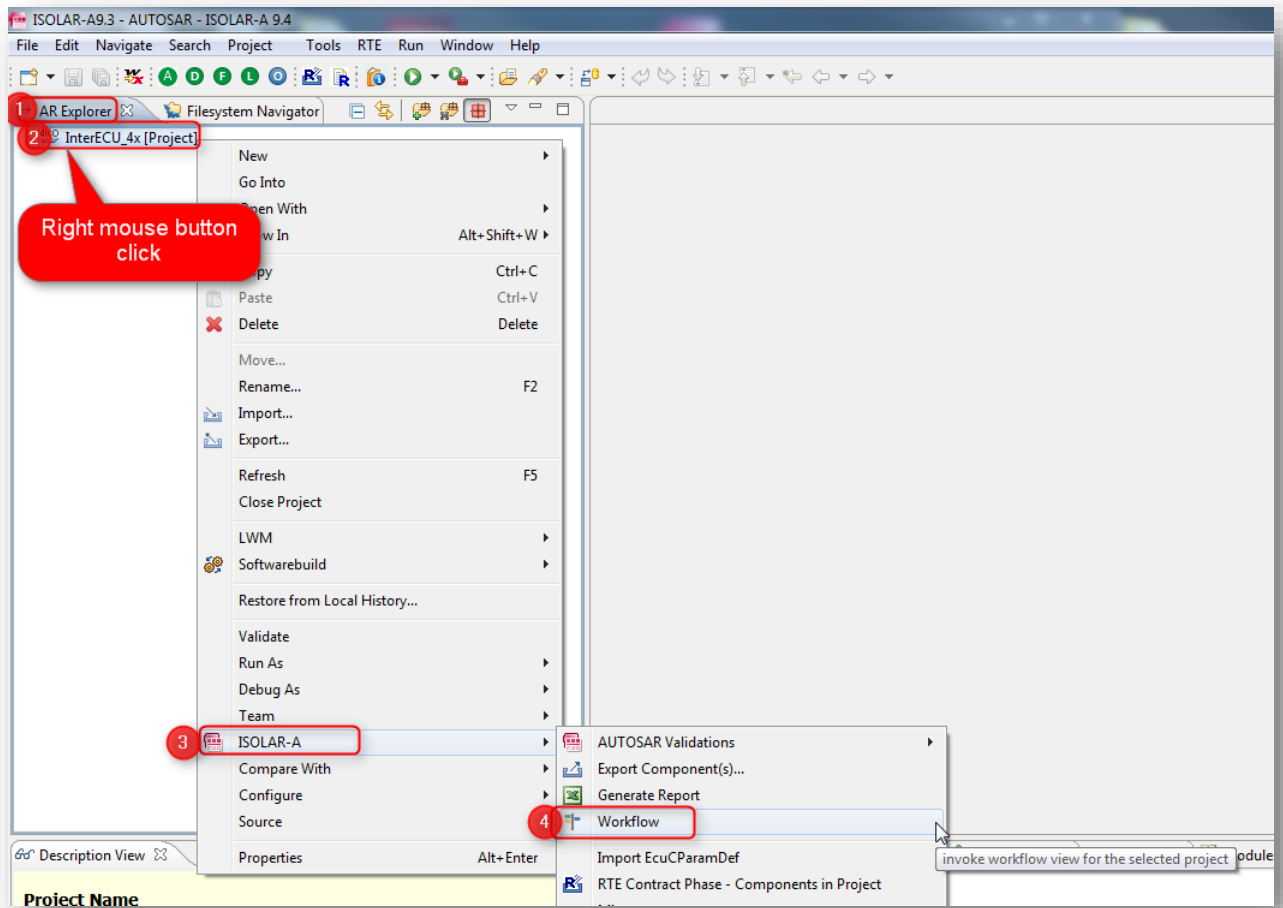
- How to customize or edit a workflow?
- How to create a customizable workflow?



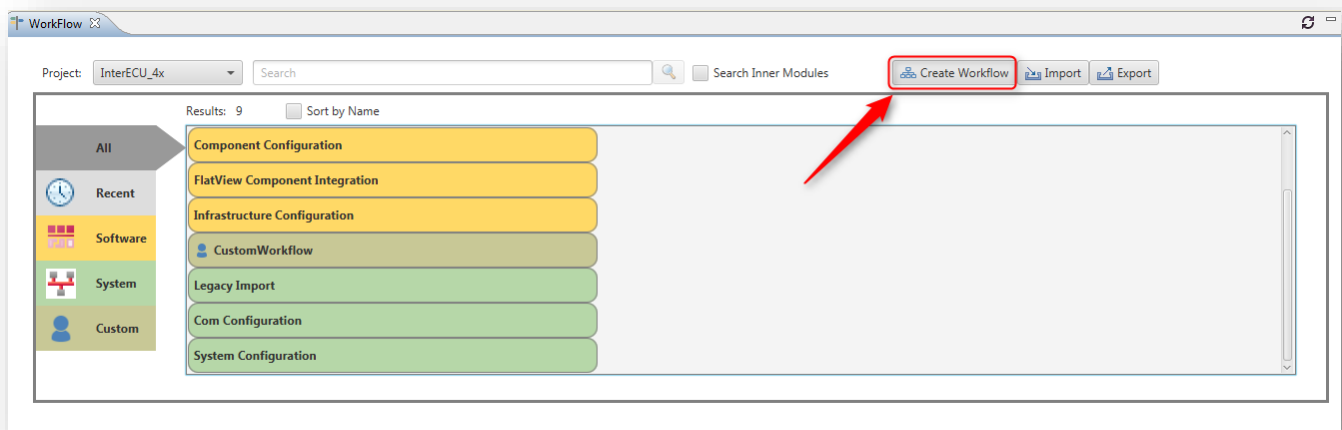
Answer:

- This feature is available in **ISOLAR-A V9.3** and greater

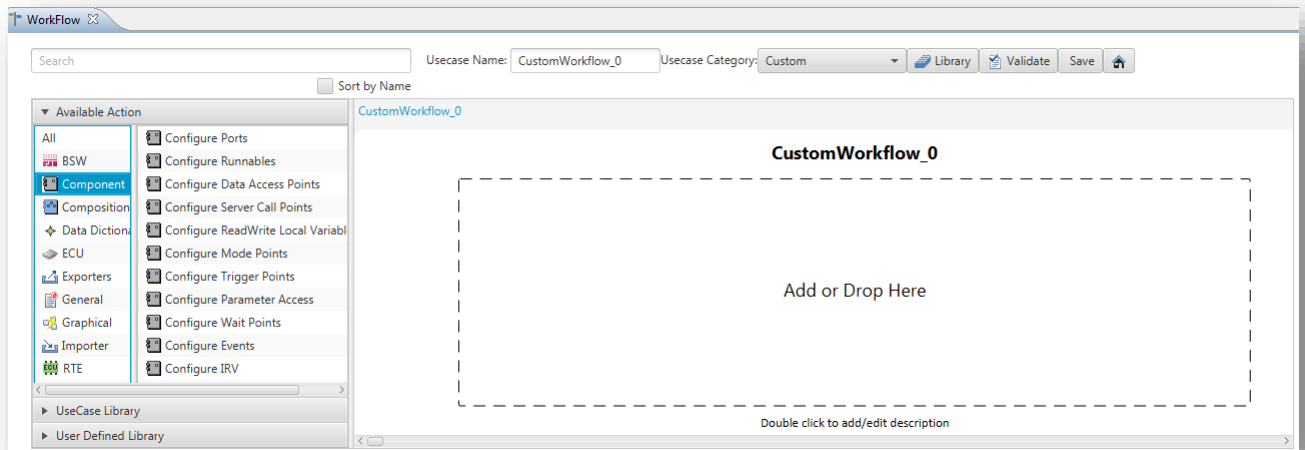
- In **ISOLAR-A** > **AR Explorer** > AUTOSAR project > Right mouse button click > **ISOLAR-A** > **Workflow**



- Click button **Create Workflow**



- Drag and drop elements to **CustomWorkflow** area and finally click button **Save**



Do you still have questions?

- You will find **further FAQ articles** on the ETAS homepage: www.etas.com/en/faq
- **Movies** corresponding to FAQ articles can be found on the [ETAS YouTube channel](#) as well
- Please feel free to contact our Support Center, if you have further questions.
- Here you can find all information: <http://www.etas.com/en/hotlines.php>

This information (here referred to as „FAQ“) is provided without any (express or implied) warranty, guarantee or commitment regarding completeness or accuracy. Except in cases of wilful damage, ETAS shall not be liable for losses and damages which may occur or result from the use of this information (including indirect, special or consequential damages).