

ISOLAR-A: Create and map many RTE Ports for CAN



Question

- Is it possible to have an automatic mapping between **BSW** and **RTE** after a **DBC import**?
- Actually we create for every single signal (several hundred in total) an RTE port manually
- Do have any tool to make the work more efficient?

Use case: After DBC import we want ...

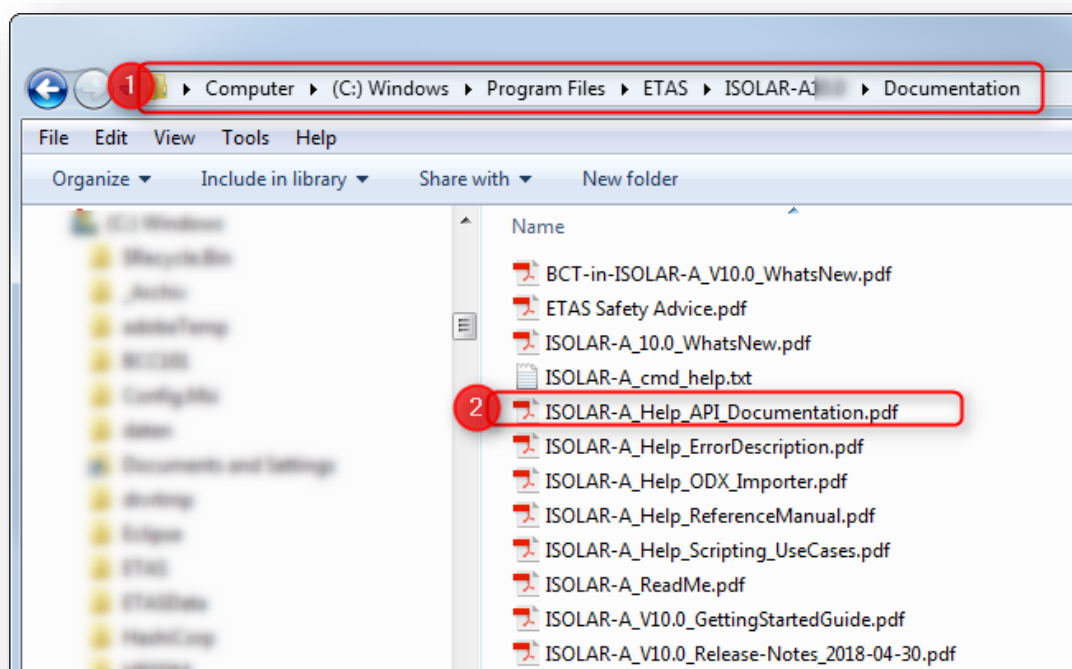
1. Ports to be created in the component automatically and
2. Signals mapped to the corresponding ports automatically



Answer

For **Step 1:** Ports to be created automatically

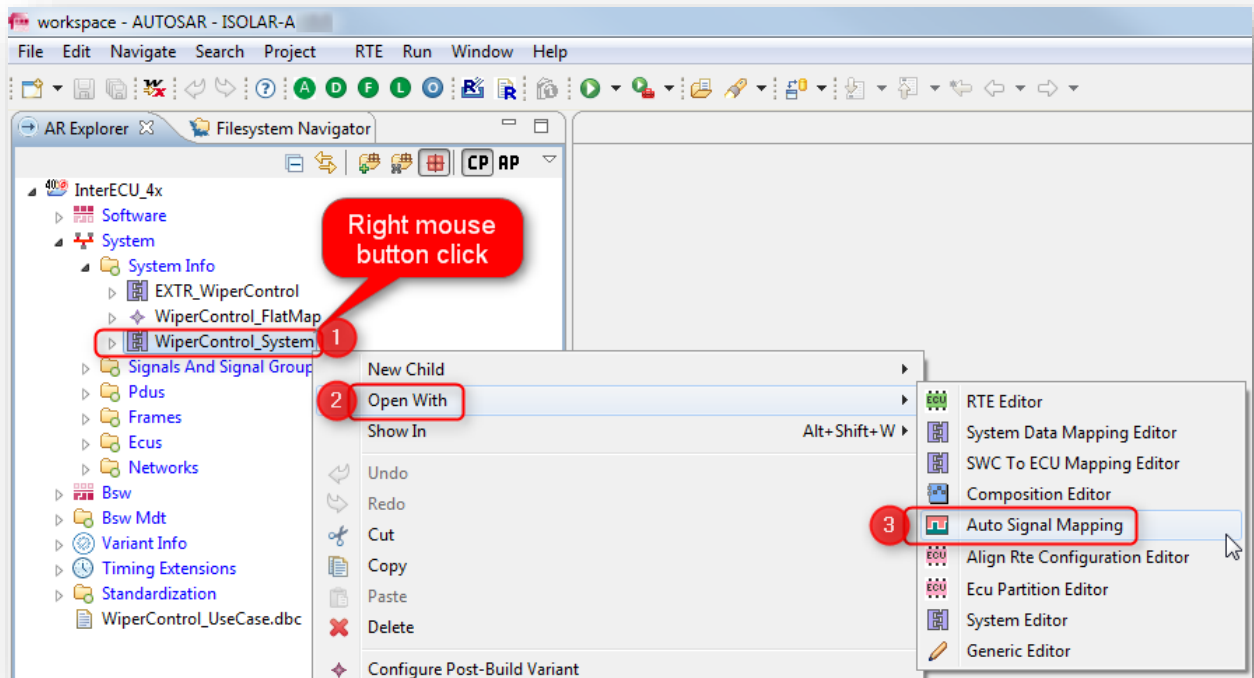
- You can write scripts for creating ports
- Please refer the help for writing scripts
 - In **<ISOLAR-A_installation_directory>/Documentation** → Open the pdf file **ISOLAR-A_Help_API_Documentation.pdf**



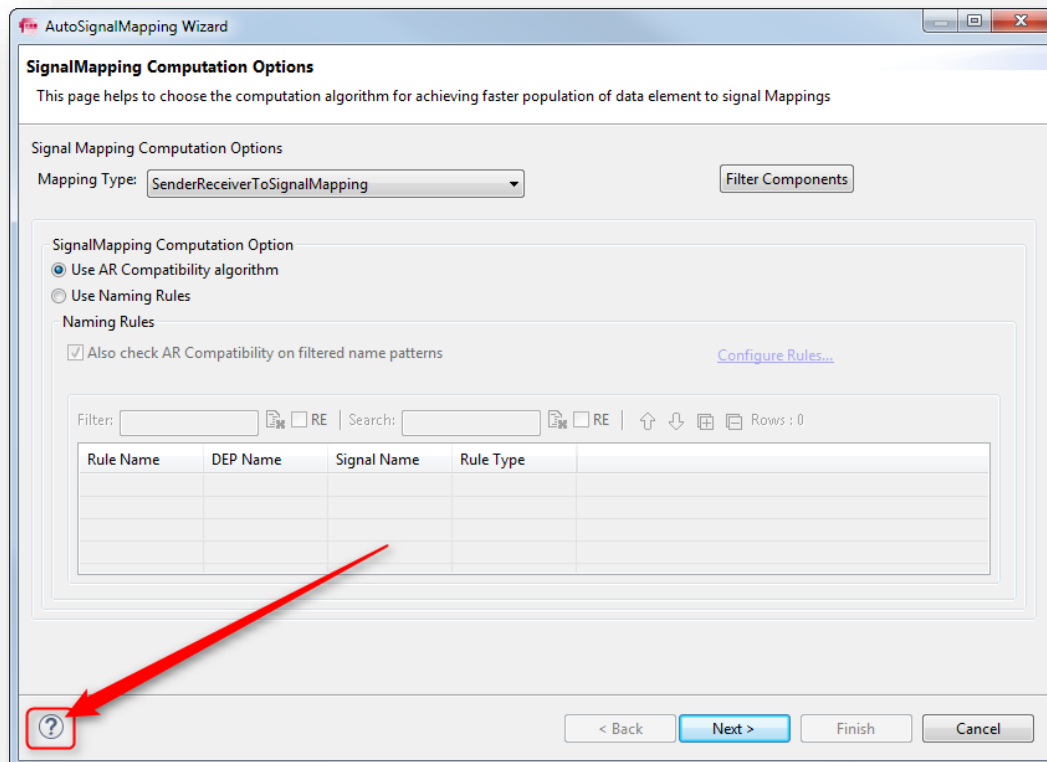
- You may find useful information in the other documentation files as well
- For example: **ISOLAR-A_Help_Scripting_UseCases.pdf**

For **Step 2**: Map signals to ports automatically

- You can use the **Auto Signal Mapping** wizard
 - In **ISOLAR-A** → **AR Explorer** → AUTOSAR project → **System** → **System Info** → On the system: Click **right mouse button**



- In dialog **AutoSignalMapping Wizard** → Click **question mark** button



- On the right hand site: Find further information regarding the **AutoSignalMapping Wizard**



Do you still have questions?

- You will find **further FAQ articles** on the ETAS homepage: www.etas.com/en/faq
- **Movies** corresponding to FAQ articles can be found on the [ETAS YouTube channel](#)
- Please feel free to contact our Support Center, if you have further questions.
- Here you can find all information: <http://www.etas.com/en/hotlines.php>

This information (here referred to as „FAQ“) is provided without any (express or implied) warranty, guarantee or commitment regarding completeness or accuracy. Except in cases of wilful damage, ETAS shall not be liable for losses and damages which may occur or result from the use of this information (including indirect, special or consequential damages).