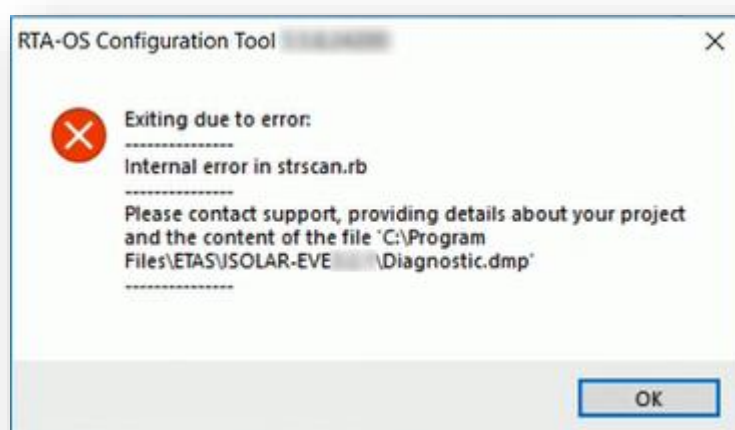


Internal error in strscan.rb



Question

- I am following the **ISOLAR-EVE tutorial** but receive an error at step **RTA-OS Code Generation**
- I am receiving an error message when I want to generate RTA-OS code on **Windows 10**
- The error message:



RTA-OS Configuration Tool

Exiting due to error:

Internal error in strscan.rb

- When I copy the error into the **Microsoft Windows clipboard** there is following content copied into the clipboard:

*Checking RTE configuration.
 Checking ./arxml/EVE/RTA-OS/osVECU.arxml
 Running RTAOS
 RTA-OS Code Generator
 Version XXX, Copyright , ETAS XXX
 Fatal:*

Internal error in strscan.rb

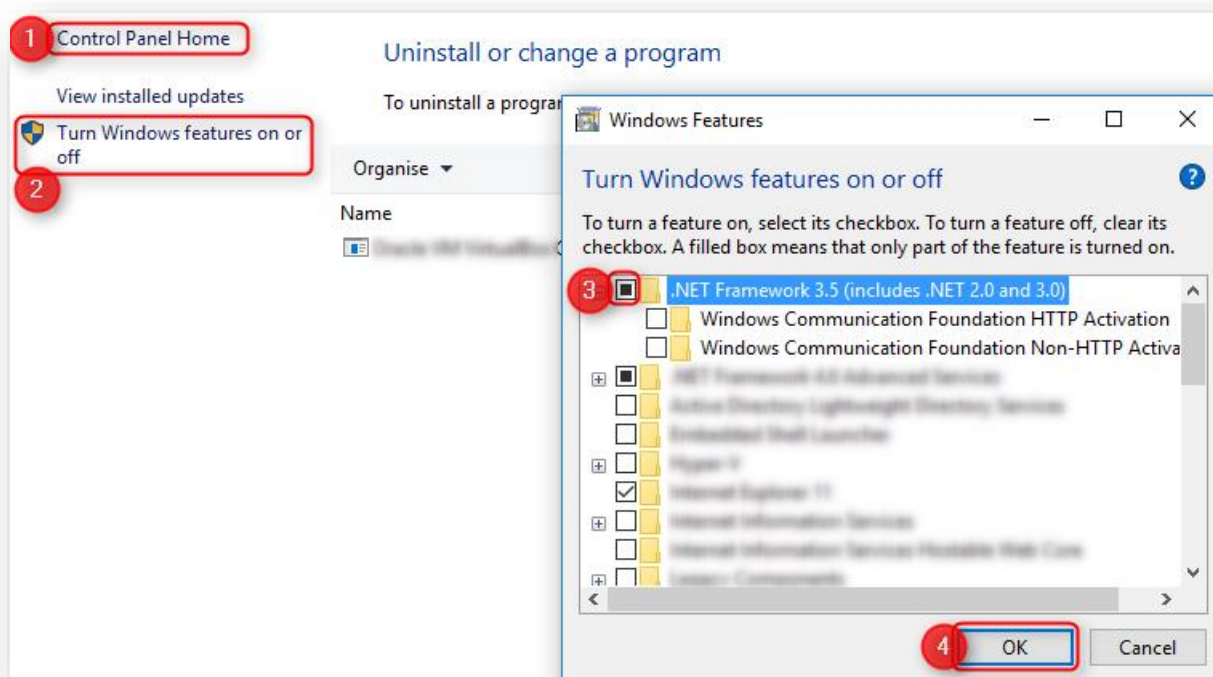
*Please contact support, providing details about your project and the content of the file
 'XXX\Diagnostic.dmp'*

*(Location = RTA-OS)
 Errors: 1, Warnings: 0.
 FAIL*



Answer

- **RTA-OS** needs **Microsoft .NET 3.5** to be present on a PC before it can run
 - Else will get strange messages, e.g. issues with **strscan.rb**
- New Windows 10 installs might not have it enabled
- It can be switched on via the **Programs and Features** section of **Control Panel**



Do you still have questions?

- You will find **further FAQ articles** on the ETAS homepage: www.etas.com/en/faq
- **Movies** corresponding to FAQ articles can be found on the [ETAS YouTube channel](#)
- Please feel free to contact our Support Center, if you have further questions.
- Here you can find all information: <http://www.etas.com/en/hotlines.php>

This information (here referred to as „FAQ“) is provided without any (express or implied) warranty, guarantee or commitment regarding completeness or accuracy. Except in cases of willful damage, ETAS shall not be liable for losses and damages which may occur or result from the use of this information (including indirect, special or consequential damages).