

ISOLAR-A: Move AUTOSAR element to other package



Question

- How to move an AUTOSAR ("AR") element to another package?
- By accident, I created an element in the wrong AR package. How can I move it?
- Element is created in **ARPackage_2.arxml**. How to move it to **ARPackage_3.arxml**?

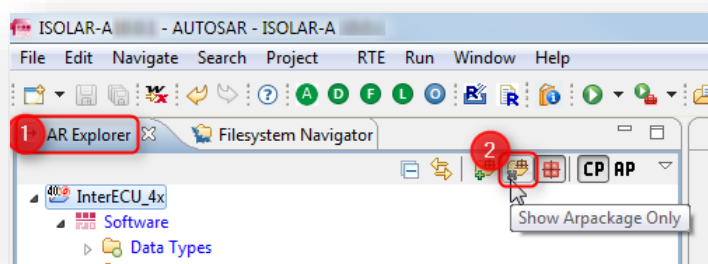


Answer

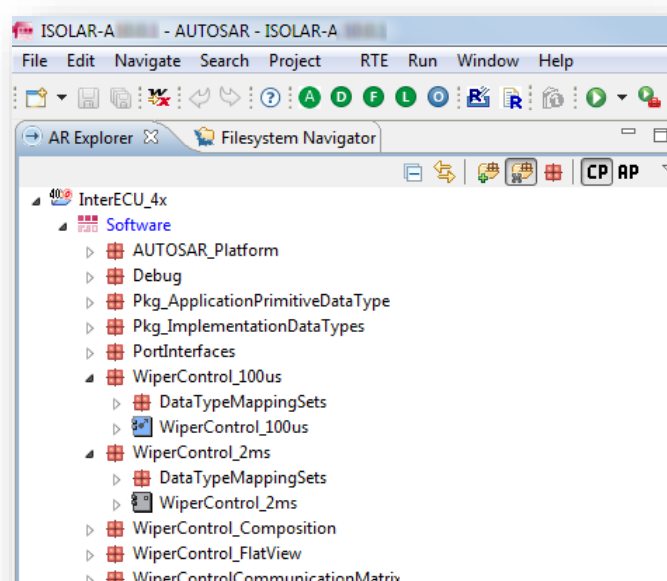
- There are 2 views where we can drag and drop elements from AR package to AR package
 - **AR Explorer** view
 - **AUTOSAR Explorer** view (file names are displayed)

AR Explorer

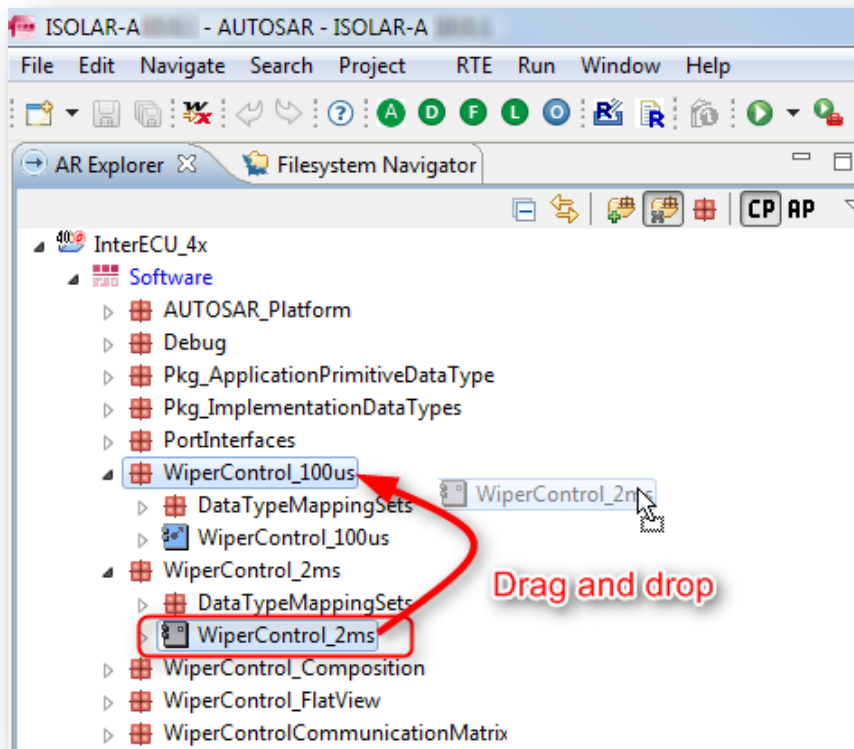
- In **AR Explorer** view → Click **Show Arpackage only** icon



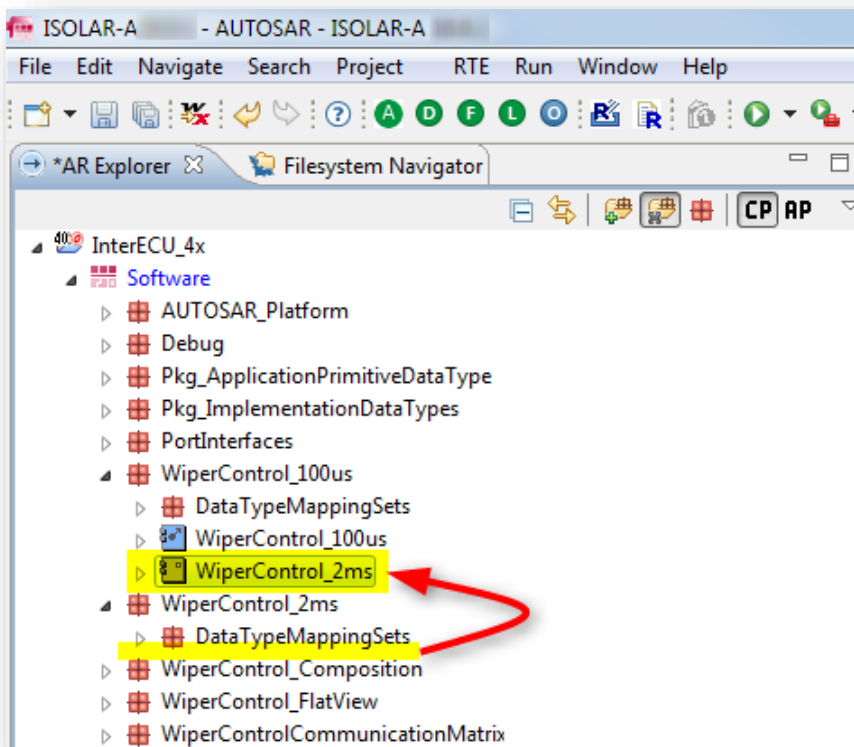
- Result:



- Drag and drop elements from AR package to different AR package

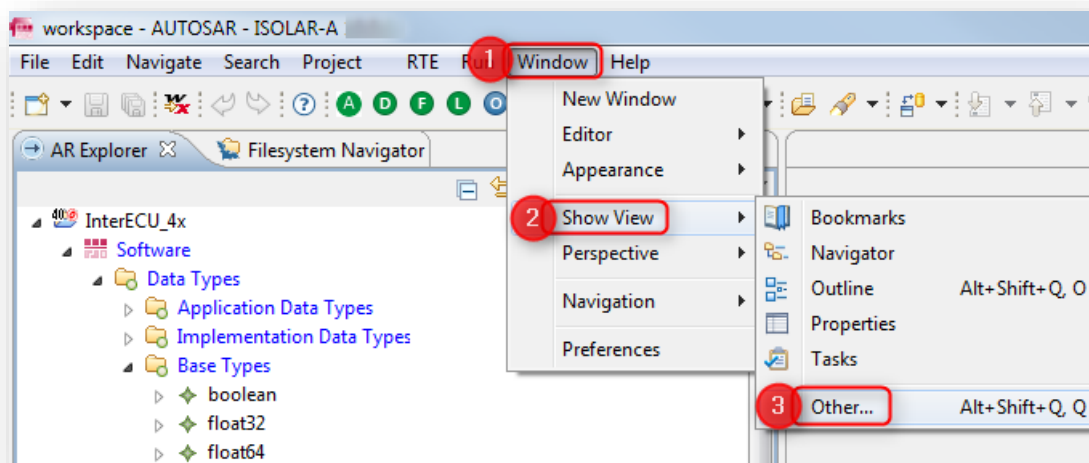


- Result:

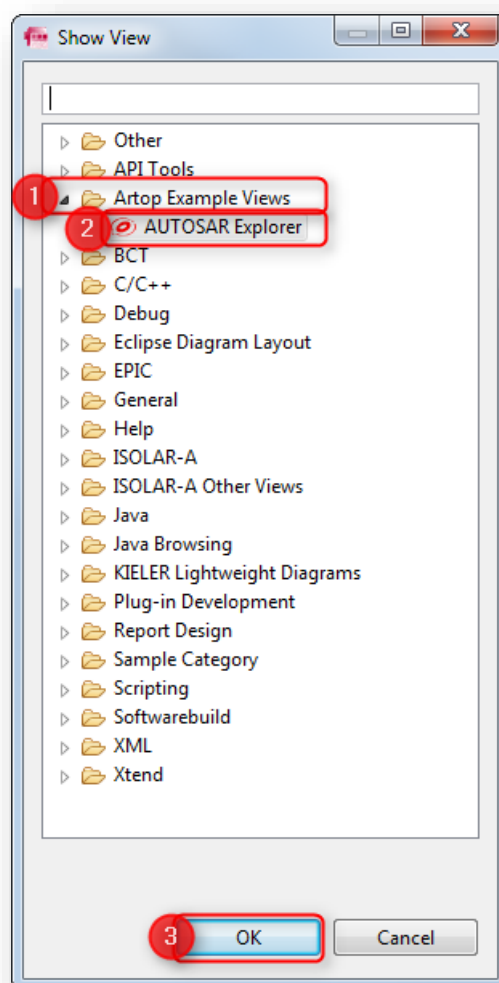


AUTOSAR Explorer

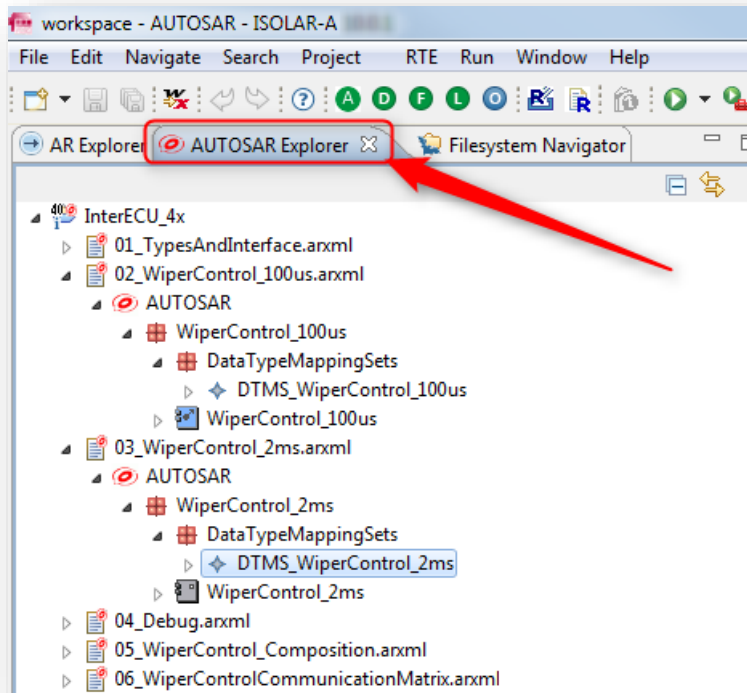
- Open **AUTOSAR Explorer** view
 - The AUTOSAR Explorer view is not visible per default
 - To activate this view follow the instructions below:
- In **ISOLAR-A** → Menu bar → **Window** → **Show View** → **Other...**



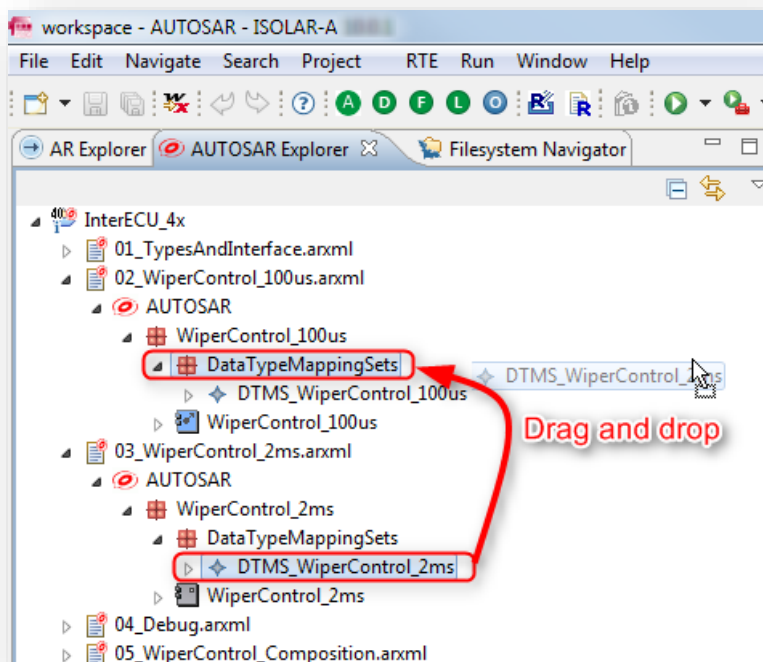
- In dialog **Show View** → **Artop Example Views** → **AUTOSAR Explorer** → Click **OK** button



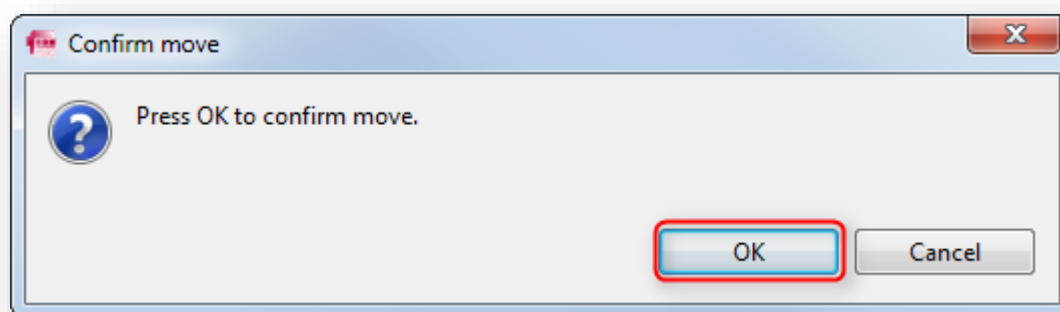
- AUTOSAR Explorer view:



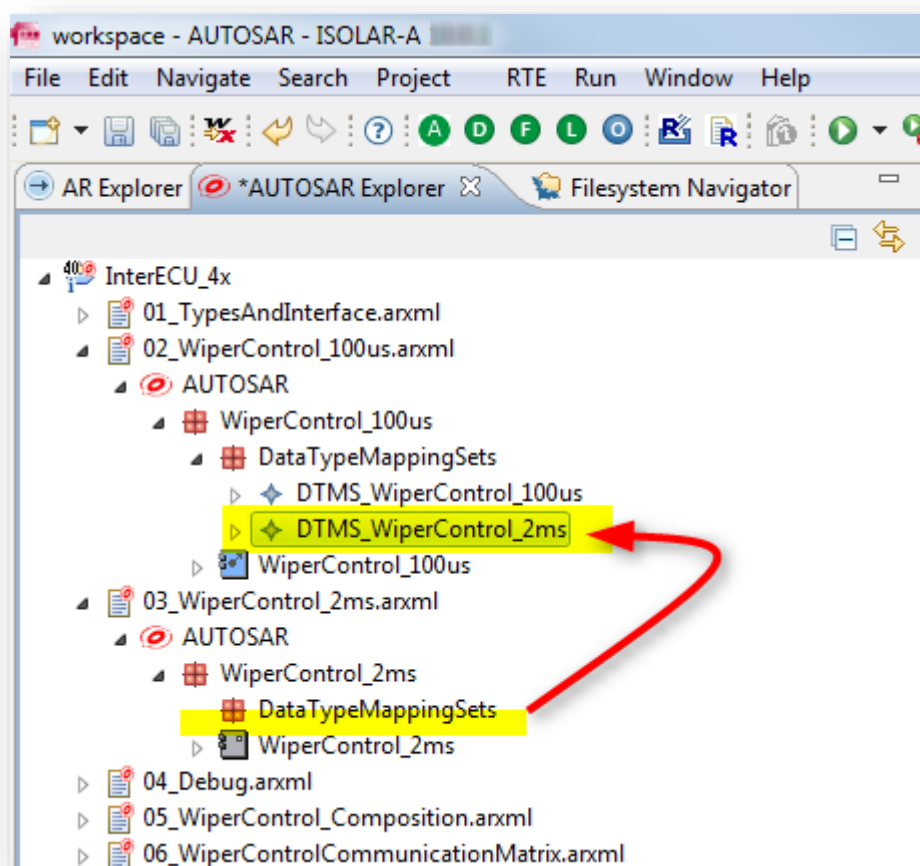
- In **AUTOSAR Explorer** we can simply drag and drop elements
- For example:



- In dialog **Confirm move** → Click **OK** button



- Result:





Do you still have questions?

- You will find **further FAQ articles** on the ETAS homepage: www.etas.com/en/faq
- **Movies** corresponding to FAQ articles can be found on the [ETAS YouTube channel](#)
- Please feel free to contact our Support Center, if you have further questions.
- Here you can find all information: <http://www.etas.com/en/hotlines.php>

This information (here referred to as „FAQ“) is provided without any (express or implied) warranty, guarantee or commitment regarding completeness or accuracy. Except in cases of willful damage, ETAS shall not be liable for losses and damages which may occur or result from the use of this information (including indirect, special or consequential damages).