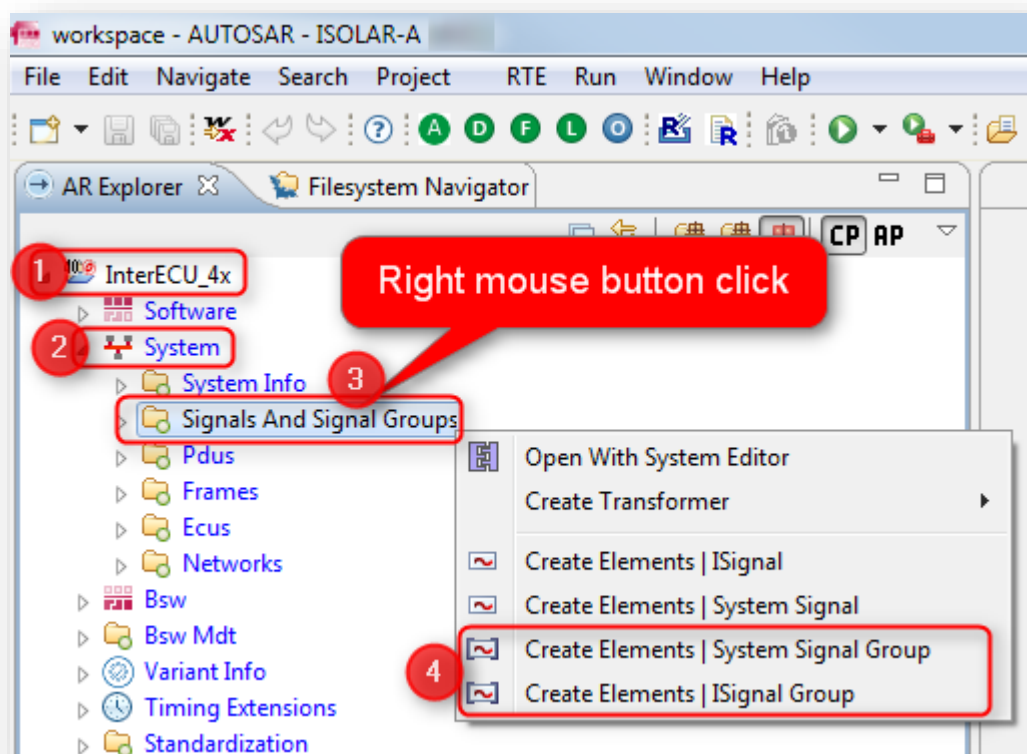


AUTOSAR: "System Signal Group" vs. "ISignal Group"



Question

- What is the difference between **System Signal Group** and **ISignal Group**?



Answer

- The **System Signal Group** defines a signal grouping on **Virtual Function Bus (VFB)** level
- The **ISignal Group** element describes a signal grouping on **cluster** level
- The RTE supports a **signal fan-out** where the same **System Signal Group** is sent in different **SignalIPdus** to multiple receivers
- An **ISignalGroup**:
 - ... refers to a set of **ISignals** that shall always be kept together
 - ... represents a **COM Signal Group**



Additional information

- Please refer to **AUTOSAR SystemTemplate** for more information

AUTOSAR		System Template
		AUTOSAR CP Release 4.3.0
7.3.4.2	E2E recommended configuration settings	487
8	Gateways	493
8.1	Frame Mapping	495
12.2	Id Mapping	496
12.2.5	Service Needs	555
12.3	Communication	556
12.3.1	Frame	556
12.3.2	PDU	557
12.3.3	ISignals and ISignalGroups	557
12.3.4	SystemSignal and SystemSignalGroup	558
12.3.5	Gateways	558
12.3.6	TP configuration	559



Do you still have questions?

- You will find **further FAQ articles** on the ETAS homepage: www.etas.com/en/faq
- **Movies** corresponding to FAQ articles can be found on the [ETAS YouTube channel](#)
- Please feel free to contact our Support Center, if you have further questions.
- Here you can find all information: <http://www.etas.com/en/hotlines.php>

This information (here referred to as „FAQ“) is provided without any (express or implied) warranty, guarantee or commitment regarding completeness or accuracy. Except in cases of willful damage, ETAS shall not be liable for losses and damages which may occur or result from the use of this information (including indirect, special or consequential damages).