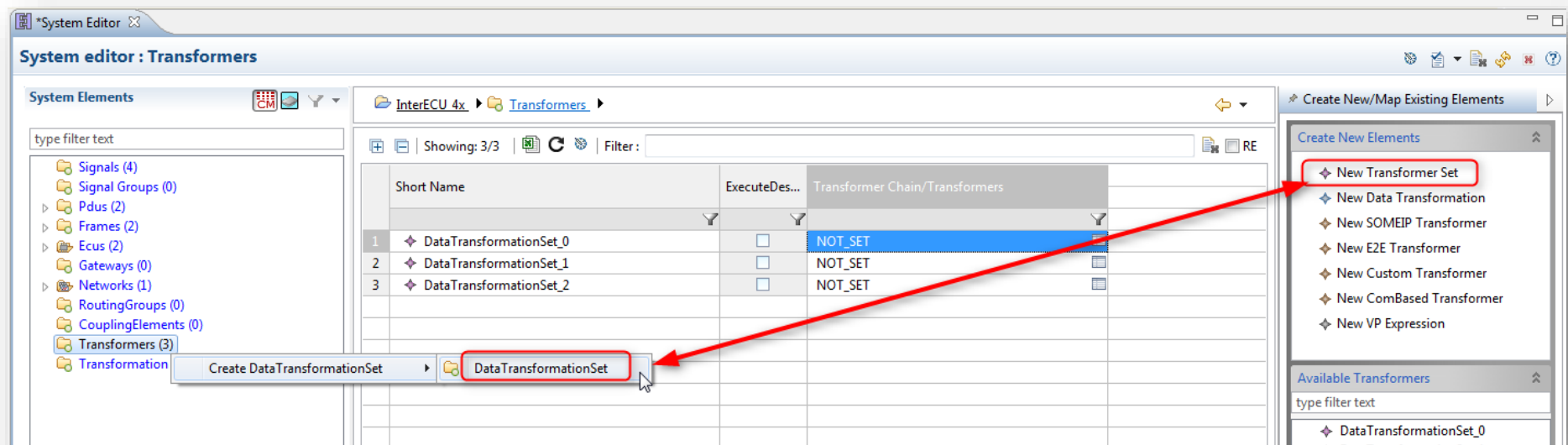


Where in ISOLAR-A can I create a DataTransformationSet?

? Question

- Where in ISOLAR-A can I create a **DATA-TRANSFORMATION-SET**
- How to create new Data Transformation Set?
- What is the difference between "New Transformer Set" vs. "Create DataTransformationSet → DataTransformationSet"?



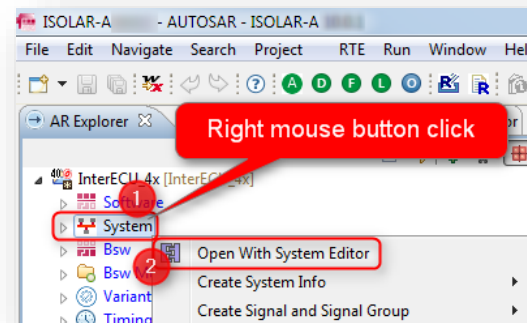


Answer

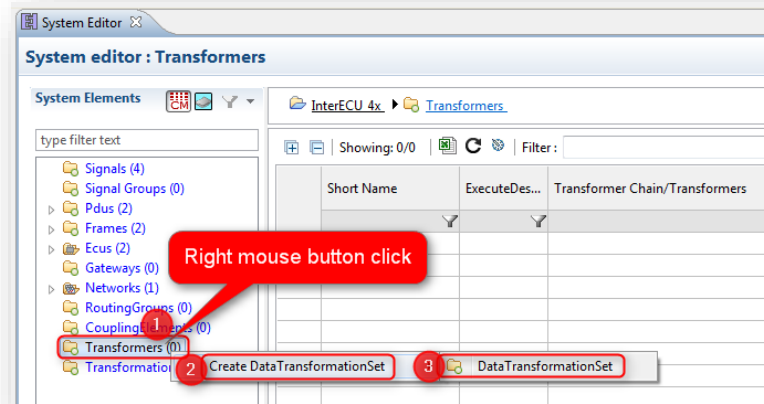
- How to create new Data Transformation Set?
- There are 3 ways to accomplish this
 - 2 ways are in **System Editor**
 - 1 way is in **AR Explorer**

Way 1 in System Editor: Context menu on **Transformers**

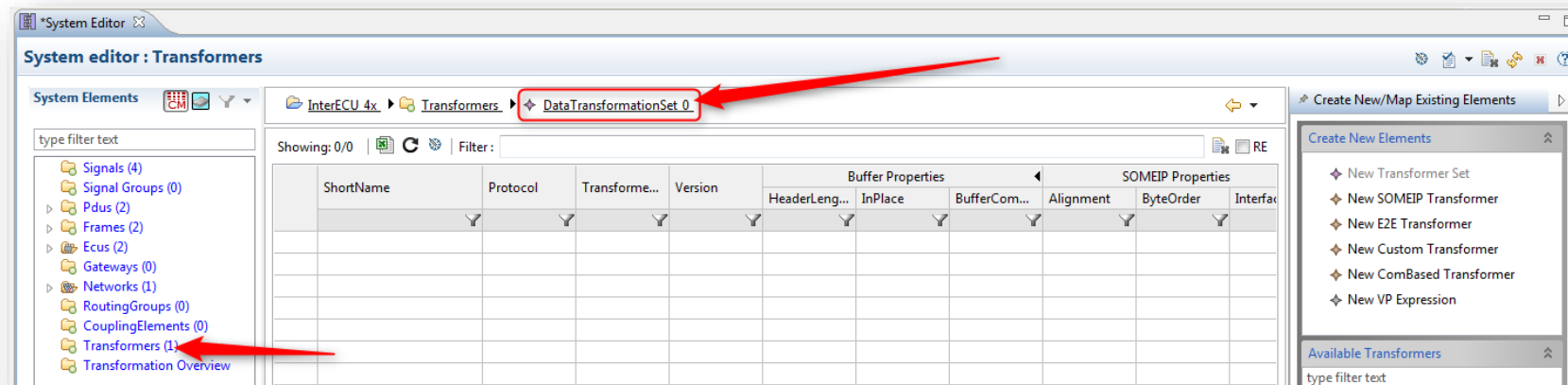
1. Open System Editor: In **AR Explorer** → On **System**: Right mouse button click → **Open With System Editor**



2. In **System Editor** → **Transformers**: Right mouse button click → **Create DataTransformationSet** → **DataTransformationSet**

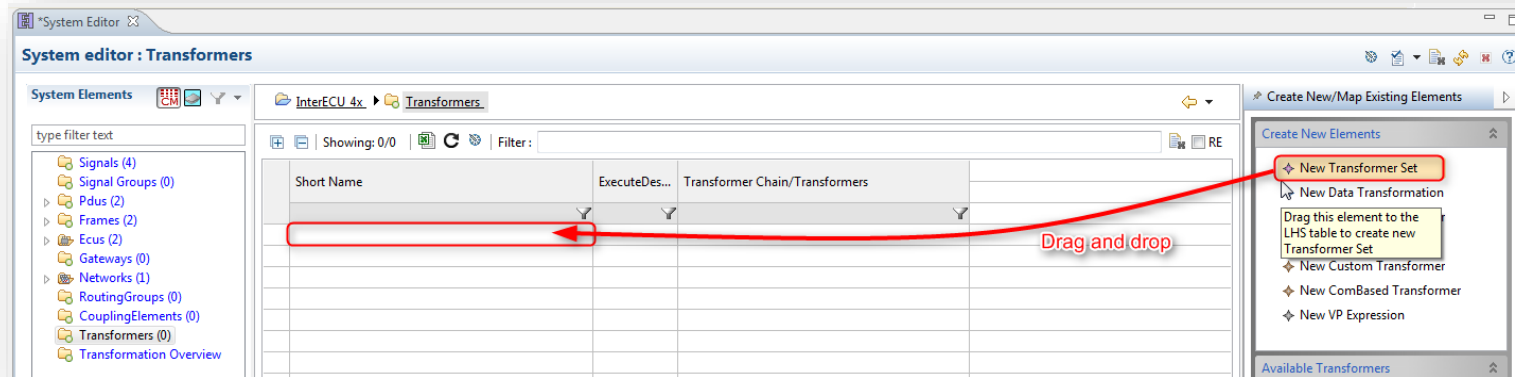


3. Result: **DataTransformationSet_0** is created

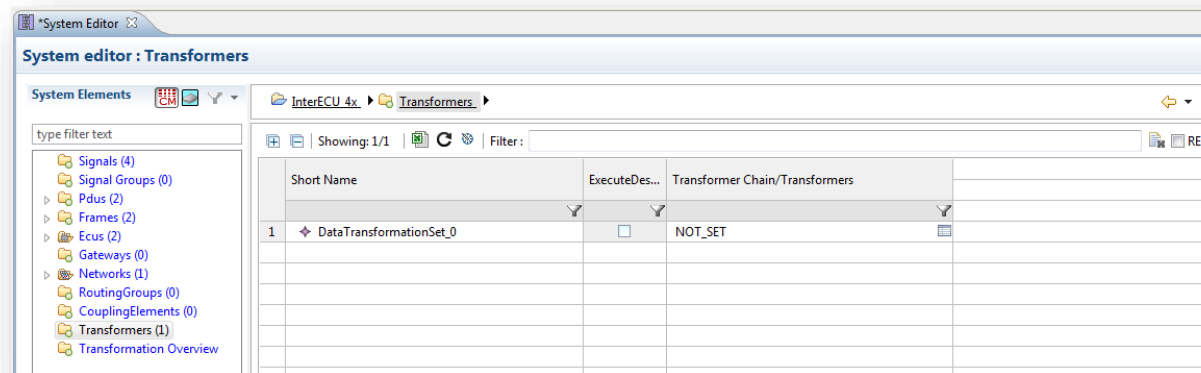


Way 2 in System Editor: Drag and drop

1. On right hand site in view **Create New Elements**: Drag and drop **New Transformer Set** into table

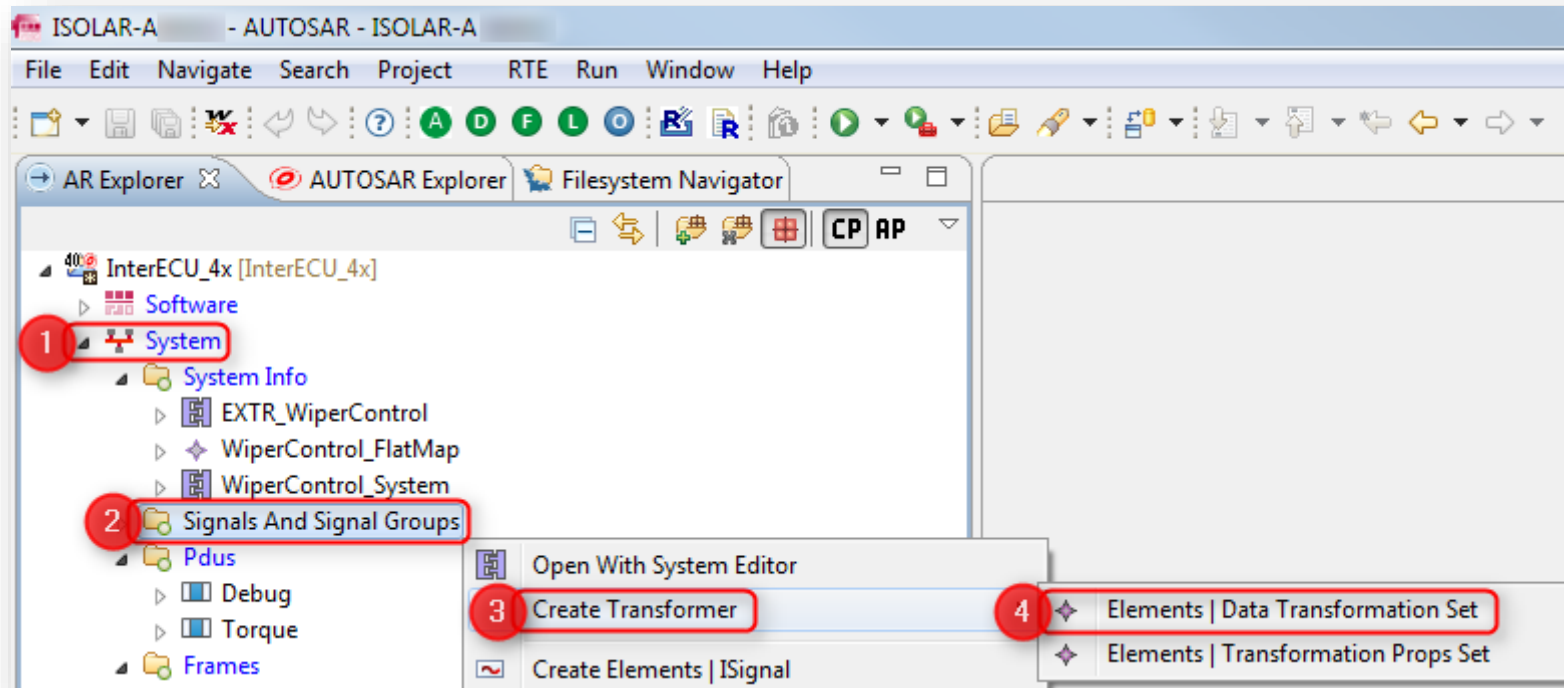


2. Result:

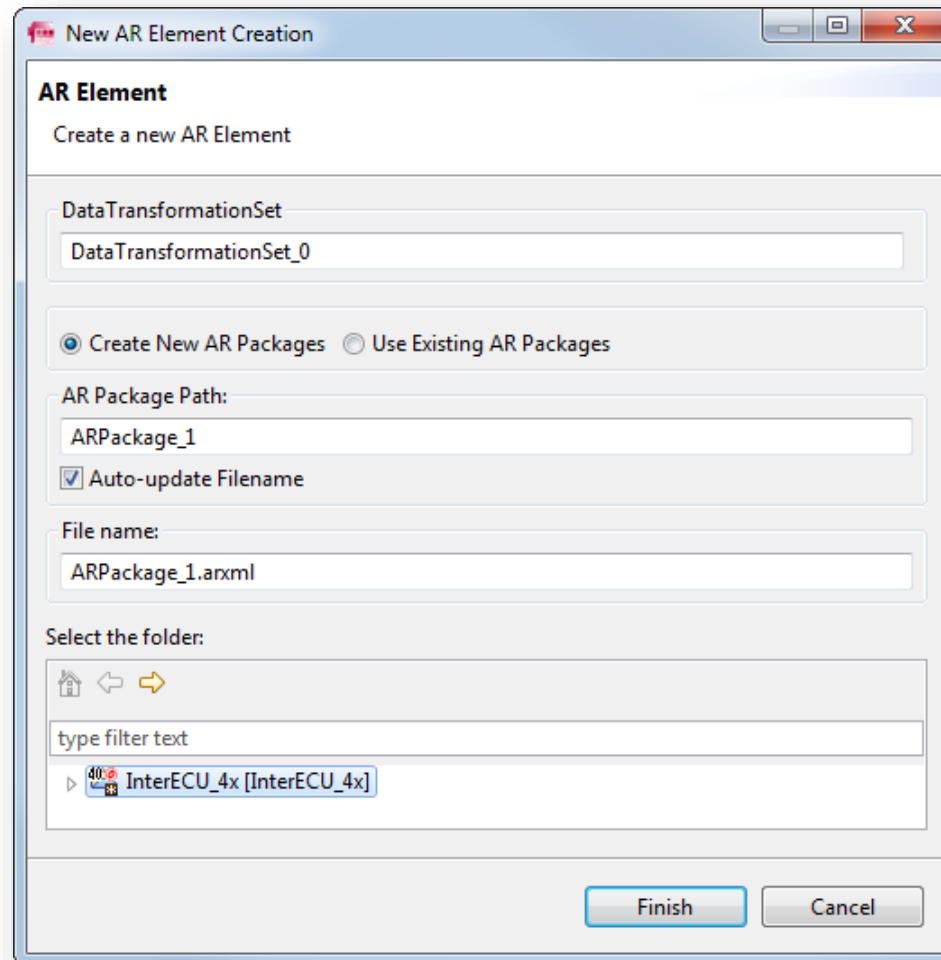


This could also be created in **AR Explorer** under System grouping

1. In AR Explorer → System → Signals And Signal Groups → Create Transformer → Elements | Data Transformation Set



2. In dialog **New AR Element Creation** → Click **Finish** button





Additional information

- What is the difference between "New Transformer Set" vs. "Create DataTransformationSet --> DataTransformationSet"?
 - This is basically same element
 - In System Editor Pallet, there is a cosmetic issue where instead of **DataTransformationSet**, the term **Transformer Set** is used.
 - This will be corrected in coming release.



Do you still have questions?

- You will find **further FAQ articles** on the ETAS homepage: www.etas.com/en/faq
- **Movies** corresponding to FAQ articles can be found on the [ETAS YouTube channel](#)
- Please feel free to contact our Support Center, if you have further questions.
- Here you can find all information: <http://www.etas.com/en/hotlines.php>

This information (here referred to as „FAQ“) is provided without any (express or implied) warranty, guarantee or commitment regarding completeness or accuracy. Except in cases of willful damage, ETAS shall not be liable for losses and damages which may occur or result from the use of this information (including indirect, special or consequential damages).