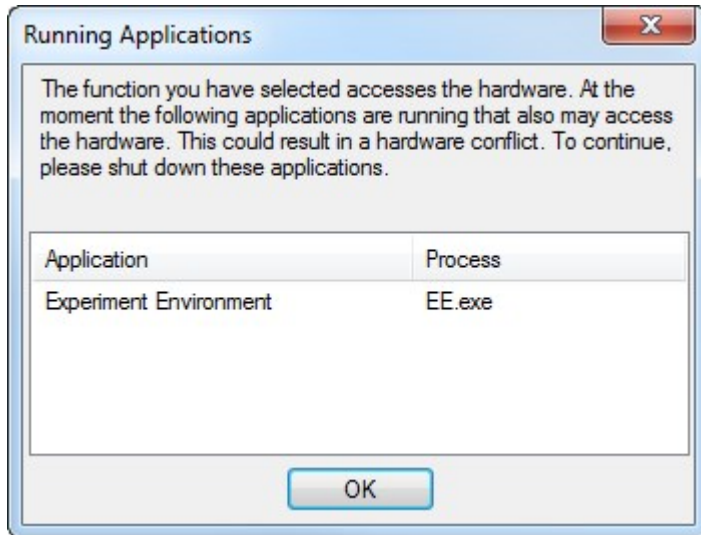




Question:

Problem

There is a blocking Popup Window during INCA Hardware Initialization when **EE.exe** (Experiment Environment) is already started:



Reason

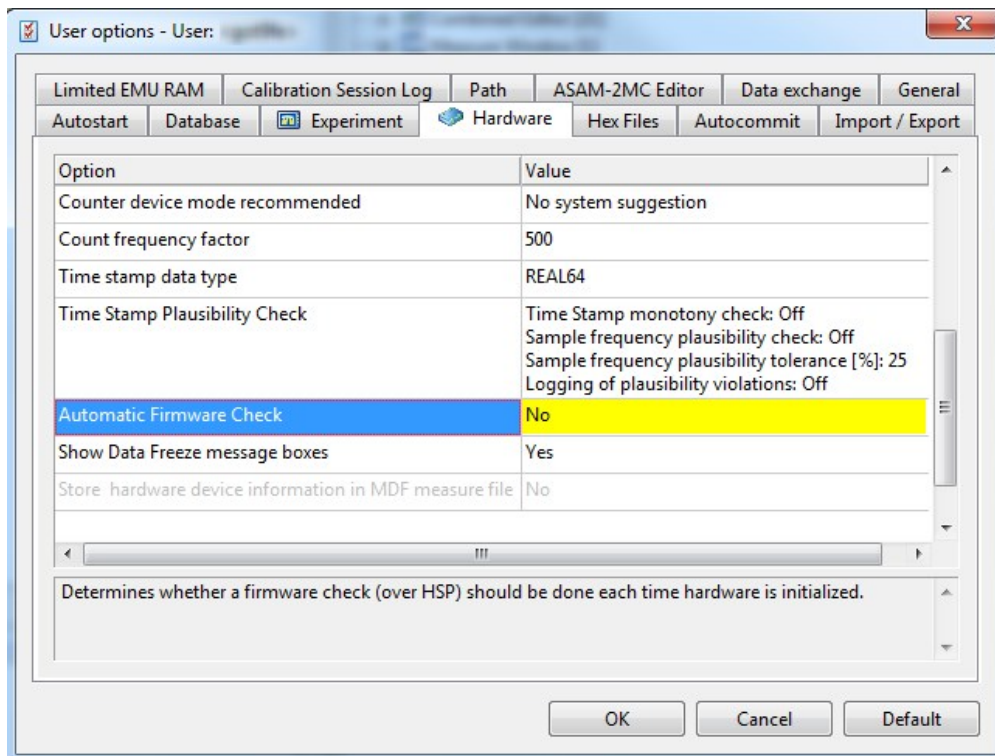
INCA calls the HSP-Tool during Hardware Initialization by default to check the Firmware, but **EE.exe** must not be opened at the same time.



Answer:

Solution

Disable within INCA user settings the automatic Firmware Check during Hardware Initialization (sensible for LABCAR use case with LABCAR-CCI only):



Additional information:



In case of further questions:

You will find further FAQ here: www.etas.com/en/faq

Please feel free to contact our Support Center, if you have further questions.

Here you can find all information: <http://www.etas.com/en/hotlines.php>

436694254 / 8

This information (here referred to as „FAQ“) is provided without any (express or implied) warranty, guarantee or commitment regarding completeness or accuracy. Except in cases of willful damage, ETAS shall not be liable for losses and damages which may occur or result from the use of this information (including indirect, special or consequential damages).